

U. S. PUBLIC LAND SURVEY MONUMENT RECORD

NOTE: This form is intended and designed to fulfill all requirements of Wisconsin Administrative Code, Chapter A-E 7.08 U.S. Public Land Survey Monument Record (3) (a-i)

A-E 7.08(3)(a) Identity of corner:
Southeast Corner Section 24,
Township 40 North, Range 14 East
of the Fourth Principal Meridian,
Town of Alvin, Forest County,
Wisconsin

WISCRS - FOREST COUNTY
N: 699,913.016 USft (XXX,XXX.XXX)
E: 894,393.700 USft (XXX,XXX.XXX)
Datum: NAD83 (2011)
GNSS Method RTK
GNSS Control WISCORS VRS



The coordinate value shown has been verified by the average of two or more GPS observations at a markedly different time. Coordinates shown in parenthesis are previously published values.

A-E 7.08(3)(b)

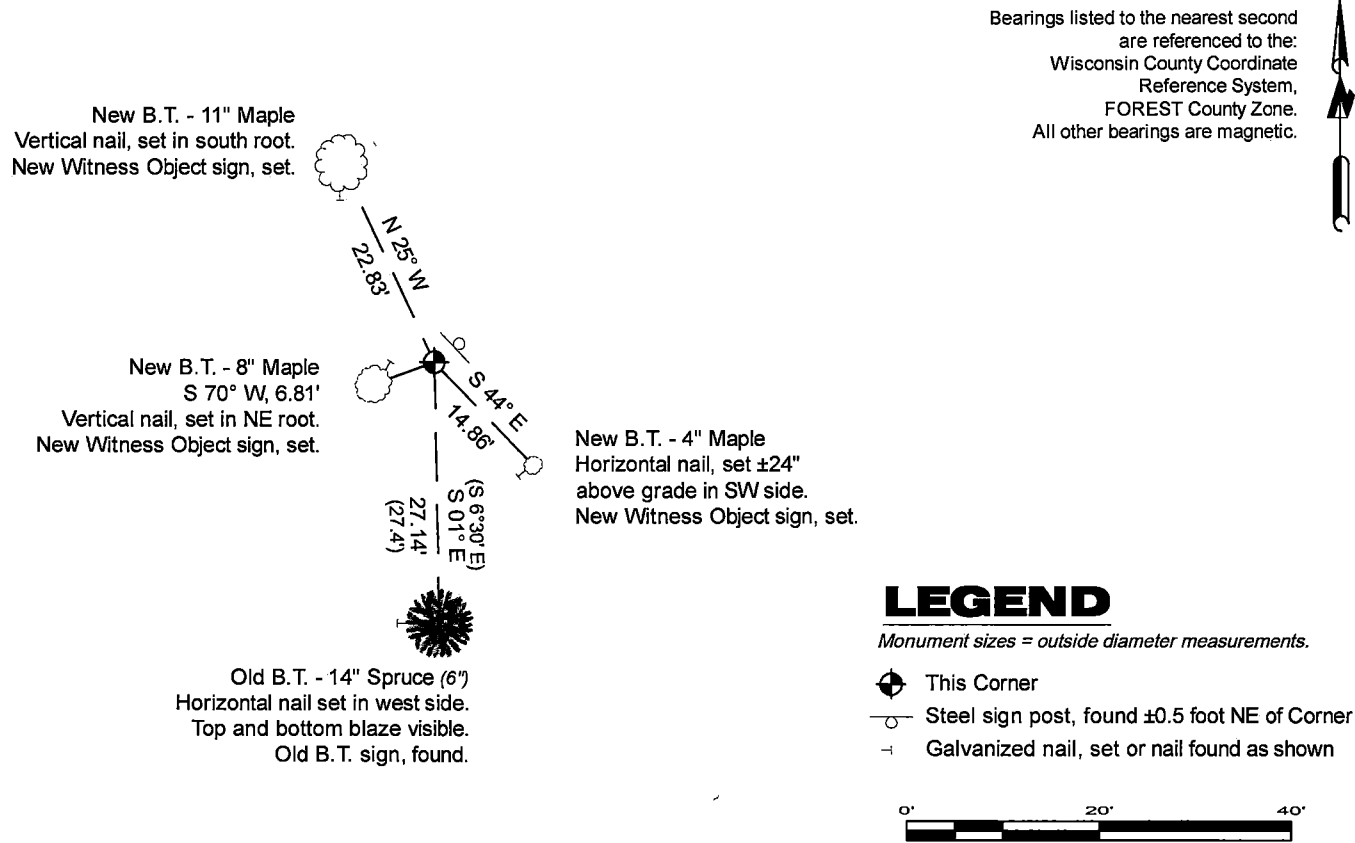
Original Surveyor: Artemas Curtis - June 1858
Cedar 12 - S 42° W, 46 Links, Cedar 12 - N 50° W, 89 Links
Hemlock 20 - N 34° E, 46 Links, Hemlock 12 - S 72° E, 33 Links

THENCE:

- July 1, 1944-August 10, 1950 - Cadastral Engineer - Hugh B. Crawford - United States Department of the Interior, General Land Office, Bureau of Land Management - indicates that he marked the corner position a "concrete monument, 3 ft. long, 4 ins. diam., 30 ins. in the ground, with an iron post, 3 ft. long, 1 in. diam., embedded in the center, with a brass cap mkd" on page 16 of his Dependent Resurvey notes.
- 1967, 1969 - Surveyor 802 - Jean F. Resvick - indicates this position as "1945 BLM concrete post monument" on Florence Co. record Map #C1213.
- 1981 - Surveyor 1107 - William B. Cochrane - indicates this position as "dependent resurvey monument" on Forest Co. record Map #401424-19831102.

December 06, 2024 - In performing the 2024 - Forest County - "PLSS Corner Remonumentation and GPS Services" project, I found a 1-7/8" diameter galvanized iron pipe monument with a 2.5" diameter brass cap stamped to identify the corner. The monument is on highland in open hardwoods and extends ±8" above grade. I also found 1 of Resvick's bearing trees alive and in good condition. I established 3 new reference monuments as shown below.

A-E 7.08(3)(c)(d) Plan view of corner with references to at least 4 witness monuments.

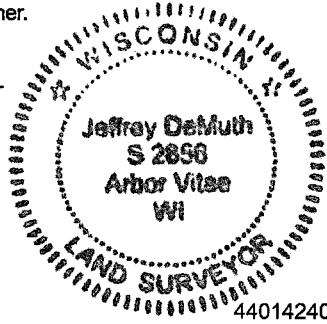


A-E 7.08(3)(e) 1858 Surveyor set a post, 1944-1950 Surveyor "says" he set a 4" diameter concrete monument, with an brass cap stamped to identify corner, 1967-1969 Surveyor found a 1945 BLM concrete post monument, 1981 Surveyor does not give a good description. In 2024, I found a 1-7/8" diameter galvanized iron pipe monument with a 2.5" diameter brass cap stamped to identify the corner.
A-E 7.08(3)(f) I accept this monument in good faith as a FOUND PERPETUATED LOCATION of the corner.
A-E 7.08(3)(g)(h) This corner was not determined through lost-corner-proportionate methods.

A-E 7.08(3)(i) I, Jeffrey L. DeMuth, Professional Land Surveyor No. S-2656, hereby certify that the corner location on this record was determined by me or under my direction and control, and that this U.S. Public Land Survey Monument Record is correct and complete to the best of my knowledge, and belief.

SIGNATURE

December 12, 2024
DATE



44014240000

44014240000

R25