

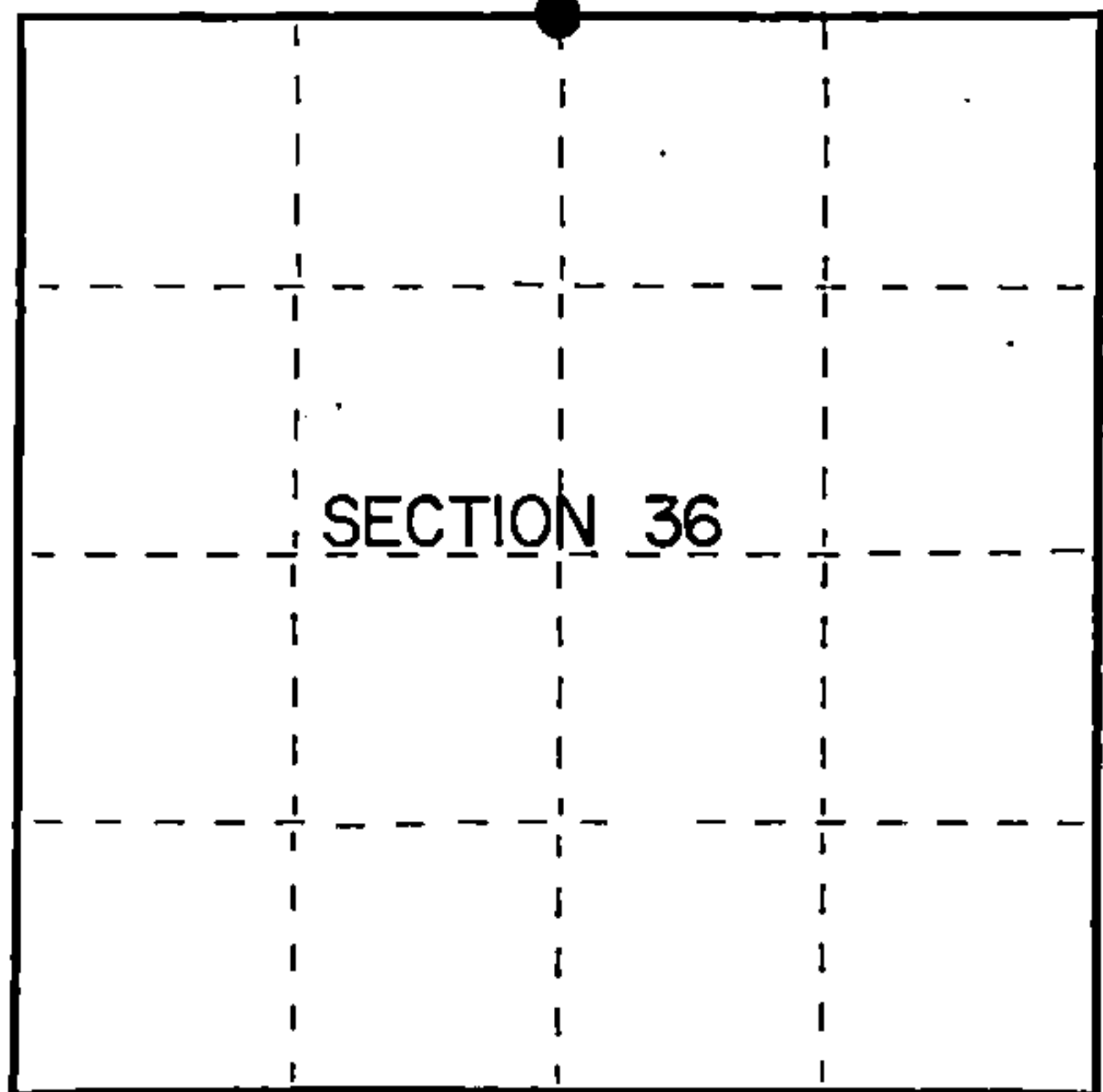
U.S. PUBLIC LAND SURVEY MONUMENT RECORD

Index No. V-23

State of Wisconsin }
County of Forest } ss.

I, Gary L. Pisoni, do hereby
certify that on the 26th day
of July, 19 89, I found
evidence of the North Quarter
corner of Section 36
Township 40, North, Range
14 East, Fourth Principal Meridian,
as described hereon; and that from this evidence
I established a new monument and accessories
as described hereon to perpetuate the original
location of this corner.

Resident witnesses:



● = Corner monument restored.

History of original corner establishment:

Original Government Survey in 1865 by William E. Daugherty.

Dependent Resurvey in 1945 by Hugh B. Crawford. West between Sections 25 and 36,
at 38.99 chains, found a 32" Cedar post scribed 1/4 on the East face. The corner
position was not monumented.

Description of corner evidence found:

No corner evidence was recovered.

The corner position is restored at proportionate distance and on line between the
Northeast and Northwest Section corners of Section 36.

Description of monument and accessories I established to perpetuate the original location of this corner.

At the corner position, set a 2½ inch diameter aluminum pipe monument, 3 feet long,
33 inches in the ground, with an aluminum cap stamped; T40N, R14E, 1/4, S25, S36,
1989, S-1634. From which the following new blazed and scribed bearing trees bear (all
measurements taken to a nail in side of tree):

Tamarack	6"	N.13°W.	11.53 feet
Tamarack	9"	N.82°E.	12.70 feet
Tamarack	10"	S.59°W.	6.00 feet
Steel Sign Post		South	0.60 feet

Dated at Iron River, MI, ~~xxxx~~ this 2nd day of November, 19 89

Signature Gary L. Pisoni Title Land Surveyor Registration No. S-1634
(County Surveyor, Registered Land Surveyor, or other duly authorized official)

Office of Register of Deeds, County of Forest, I hereby certify that the within
instrument was filed in this office for record on the 20th day of September, 19 90
at 10:45 o'clock A. M.

(Register of Deeds)

By Shawn Chitko Deputy

FORM NO. 985-A

McMillan Company

Stock No. 26273

DOCUMENT NUMBER

140493

44014250020

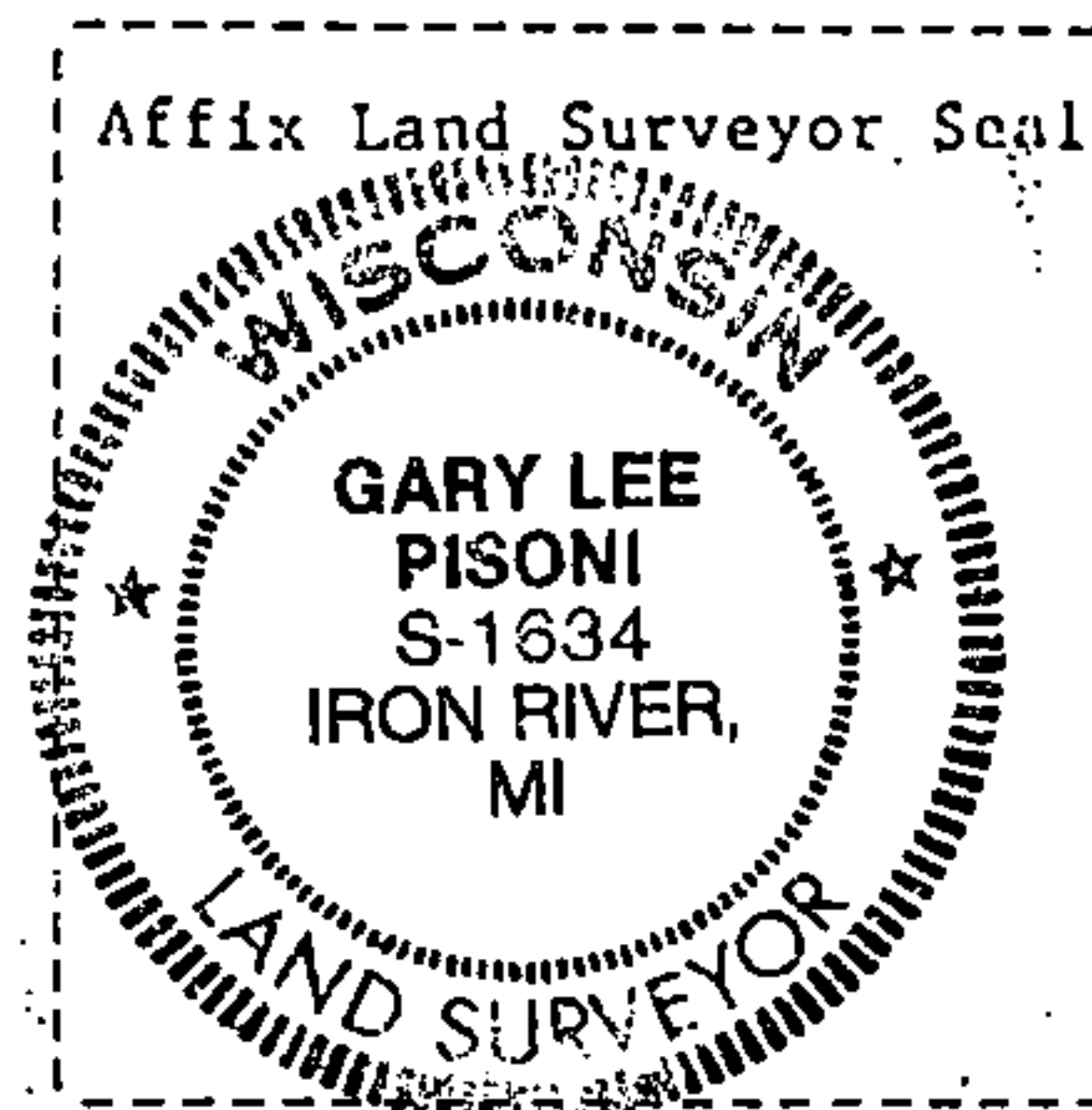
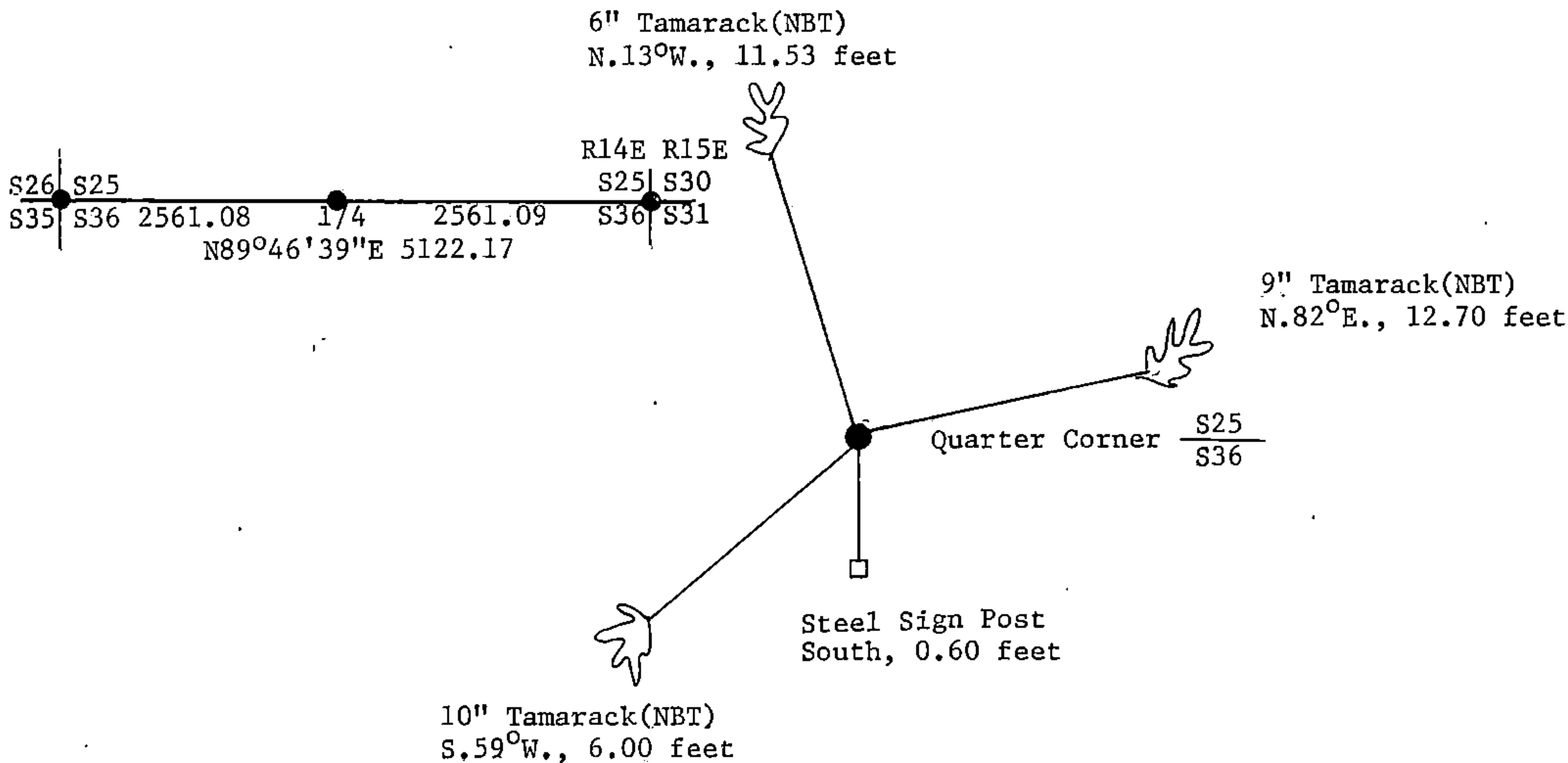
(e) Describe any material discrepancy between the location of the corner as restored or reestablished and the location of that corner as previously restored or reestablished by distance and direction. Show the discrepancy on the plan view drawing under (d), above. Show the distances between the corner as previously restored or reestablished and (1) the corner as restored or reestablished, and (2) to at least 2 of the witness monuments shown on the drawing in (d), above.

See drawing below.

(f) Was the corner restored through acceptance of (1) an obliterated evidence location, or, (2) a found perpetuated location?

Restored through lost corner proportionate methods.

(g&h) Was the corner reestablished through lost corner proportionate methods? If so, show the method, including the directions and distances to other public land survey corners used as evidence or used for proportioning in determining the corner location?



(i) I, Gary L. Pisoni
(type or print name) certify that the corner location shown on this record was determined by me or under my direction and control and that this U.S. Public Land Survey Monument Record is correct and complete to the best of my knowledge and belief.

Signature Gary L. Pisoni Date Jan 12 1990

Survey requested by: Edward C. Gager Date 5-18-90
District Ranger