

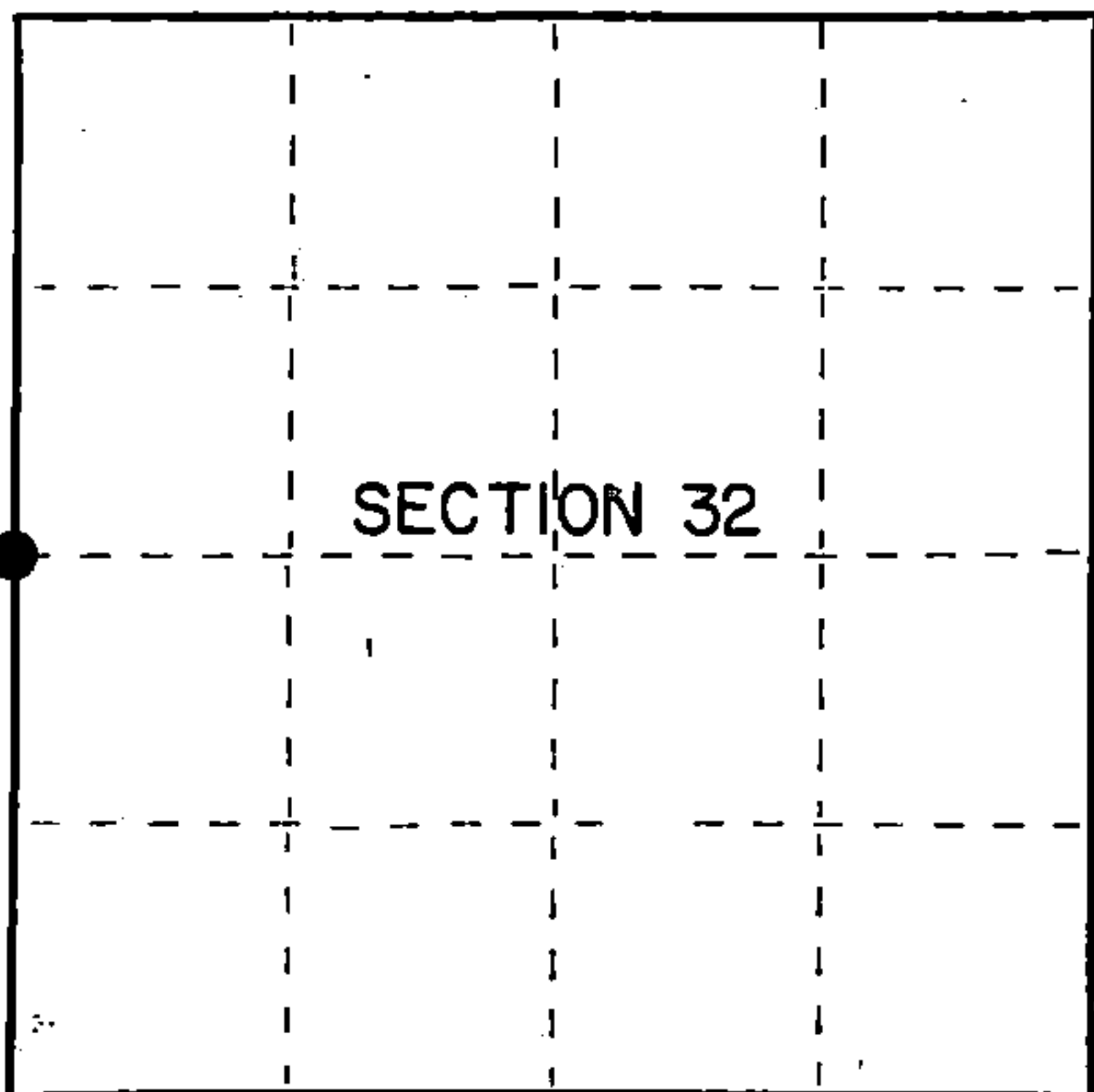
# U.S. PUBLIC LAND SURVEY MONUMENT RECORD

Index No. X-5

State of Wisconsin }  
County of Forest } ss.

I, Gary L. Pisoni, do hereby  
certify that on the 6th day  
of July, 19 89, I found  
evidence of the West Quarter  
corner of Section 32  
Township 40, North, Range  
14 East, Fourth Principal Meridian,  
as described hereon; and that from this evidence  
I established a new monument and accessories  
as described hereon to perpetuate the original  
location of this corner.

Resident witnesses:



● = Corner monument restored.

History of original corner establishment:

Original Government Survey in 1865 by William E. Daugherty. North between Sections 31 and 32, 40.00 chains, set Quarter Section post to Sections 31 and 32, from which the following bear;

Birch	8"	S.30°E.	10 links
Birch	10"	S.87°E.	20 links

Description of corner evidence found:

No corner evidence was recovered.

The corner position is restored at proportionate distance and on line between the Northwest and Southwest Section corners of Section 32.

Description of monument and accessories I established to perpetuate the original location of this corner.

At the corner position, set a 2½ inch diameter aluminum pipe monument, 3 feet long, 33 inches in the ground, with an aluminum cap stamped; T40N, R14E, 1/4, S31, S32, 1989, S-1634. From which the following new blazed and scribed bearing trees bear (all measurements are taken to a nail in side of tree):

Sugar Maple	9"	N.08°E.	33.94 feet
Sugar Maple	10"	S.50°E.	9.98 feet
Sugar Maple	10"	S.04°W.	9.85 feet
Sugar Maple	11"	N.61°W.	5.58 feet
Steel sign post		S.60°W.	0.88 feet

Dated at Iron River, MI, ~~xxxx~~ this 2nd day of November, 19 89

Signature Gary L. Pisoni Title Land Surveyor Registration No. S-1634  
(County Surveyor, Registered Land Surveyor, or other duly authorized official)

Office of Register of Deeds, County of Forest, I hereby certify that the within  
instrument was filed in this office for record on the 20th day of September, 19 90  
at 10:45 o'clock A M.

(Register of Deeds)

By Shawn Chitko Deputy

FORM NO. 985-A

H.C. Miller Company

Stock No. 26273

DOCUMENT NUMBER

140500

4401431 2000

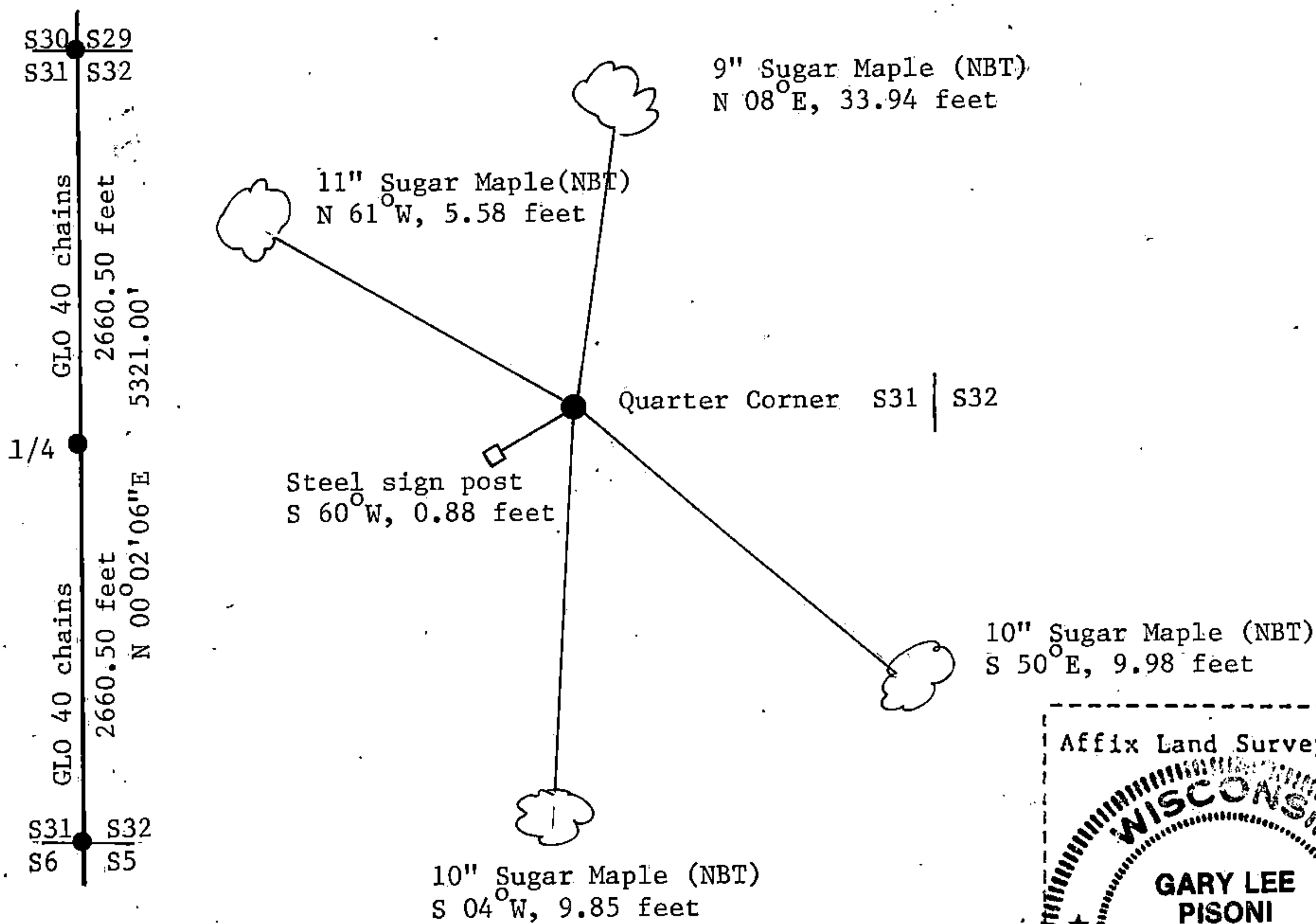
(e) Describe any material discrepancy between the location of the corner as restored or reestablished and the location of that corner as previously restored or reestablished by distance and direction. Show the discrepancy on the plan view drawing under (d), above. Show the distances between the corner as previously restored or reestablished and (1) the corner as restored or reestablished, and (2) to at least 2 of the witness monuments shown on the drawing in (d), above.

See drawing below.

(f) Was the corner restored through acceptance of (1) an obliterated evidence location, or, (2) a found perpetuated location?

Restored through lost corner proportionate methods.

(g&h) Was the corner reestablished through lost corner proportionate methods? If so, show the method, including the directions and distances to other public land survey corners used as evidence or used for proportioning in determining the corner location?



(i) I, Gary L. Pisoni  
(Type or print name) certify that the corner location shown on this record was determined by me or under my direction and control and that this U.S. Public Land Survey Monument Record is correct and complete to the best of my knowledge and belief.

Signature Gary L. Pisoni Date Jan 12 1990

Survey requested by; Edward [Signature] District Ranger Date 9-18-90