

U.S. PUBLIC LAND SURVEY MONUMENT RECORD

Index No. Z-17

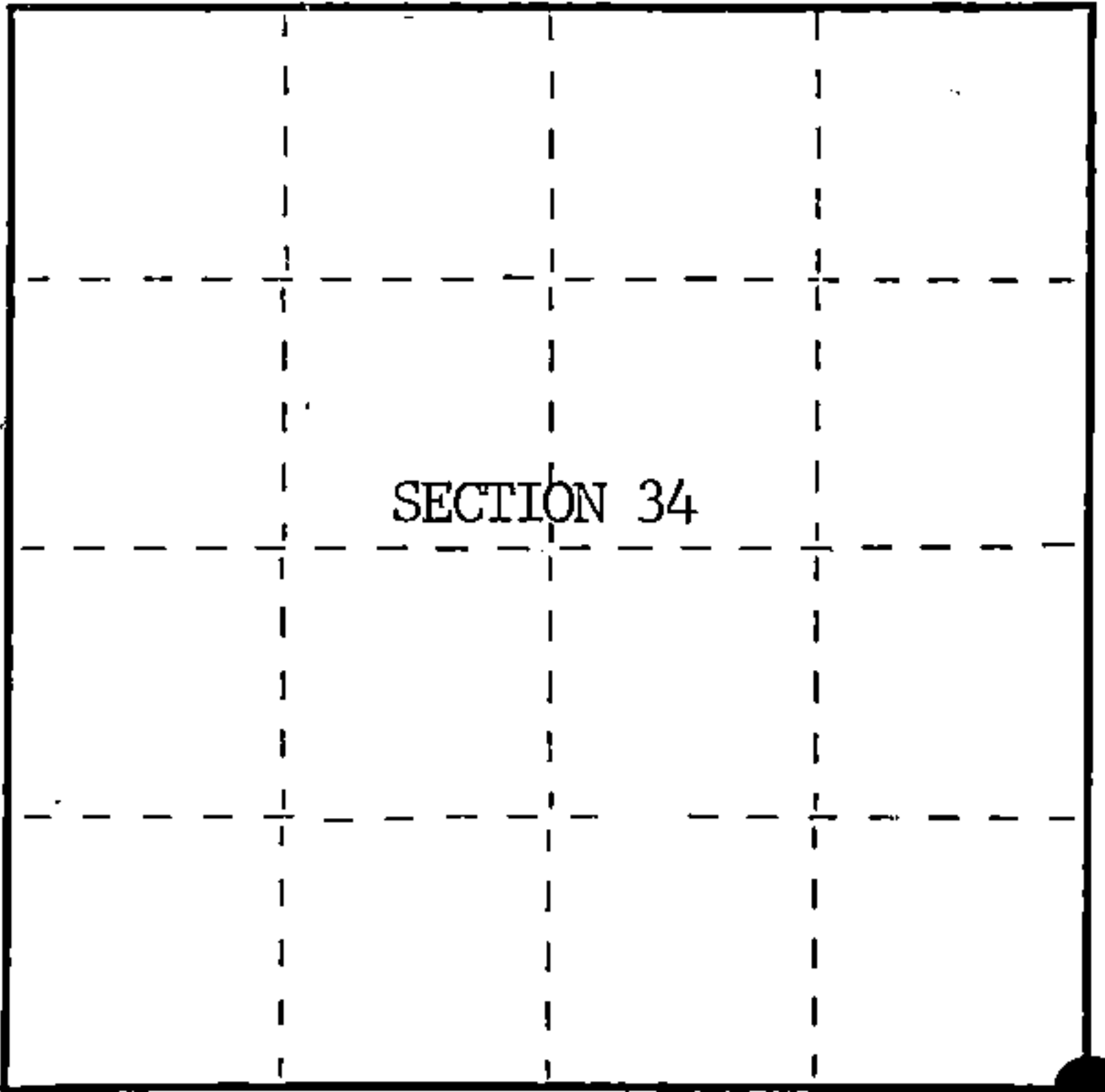
State of Wisconsin }
County of Forest } ss.

I, William B. Cochrane, do hereby
certify that on the 23rd day
of July, 1985, I found
evidence of the Southeast Section
corner of Section 34
Township 40 North, Range
14 East, Fourth Principal Meridian,
as described hereon; and that from this evidence
I established a new monument and accessories
as described hereon to perpetuate the original
location of this corner.

Resident witnesses:

Tony Tillman

State Plane Co-ordinates
N- 268,642.3870
E-2,326,780.9900



○ = Corner monument restored.

History of original corner establishment:

Original Government Survey in 1858 by Artemas Curtis. Dependent Resurvey in 1945, by
Hugh Crawford. From the remains of original bearing trees, set an iron post, 3 feet
long, 2 ins. diam., 24 ins. in the ground, with a brass cap stamped; T40N, R14E, S2,
S3, S34, S35, T39N, 1945. From which the following bear;

Tamarack	6"	N23°30'E	134 lks.
Tamarack	6"	S56°15'E	47 lks.
Spruce	8"	S41°15'W	45 lks.
Tamarack	6"	N11°45'W	60 lks.

Description of corner evidence found:

Found monunent as described and in place, from which the following bear;

Tamarack(Stump)	S56°15'E	31.02 feet
Tamarack(Snag)	N11°45'W	39.60 feet
Steel Sign Post	NE	Alongside Monument

Description of monument and accessories I established to perpetuate the original location of this corner.

Blazed and scribed the following new bearing trees;

Aspen	10"	N58°W	146.00 feet
Re-set Steel Sign Post	NE	2.00 feet	

Dated at Hiles, Wis., this 7th day of March, 1986

Signature William B. Cochrane Title Land Surveyor Registration No. S-1107
(County Surveyor, Registered Land Surveyor, or other duly authorized official)

Office of Register of Deeds, County of Forest, I hereby certify that the within
instrument was filed in this office for record on the 11th day of March, 1987
at 3:30 o'clock P. M.

Paul Aschenbrenner
(Register of Deeds)

By Deputy

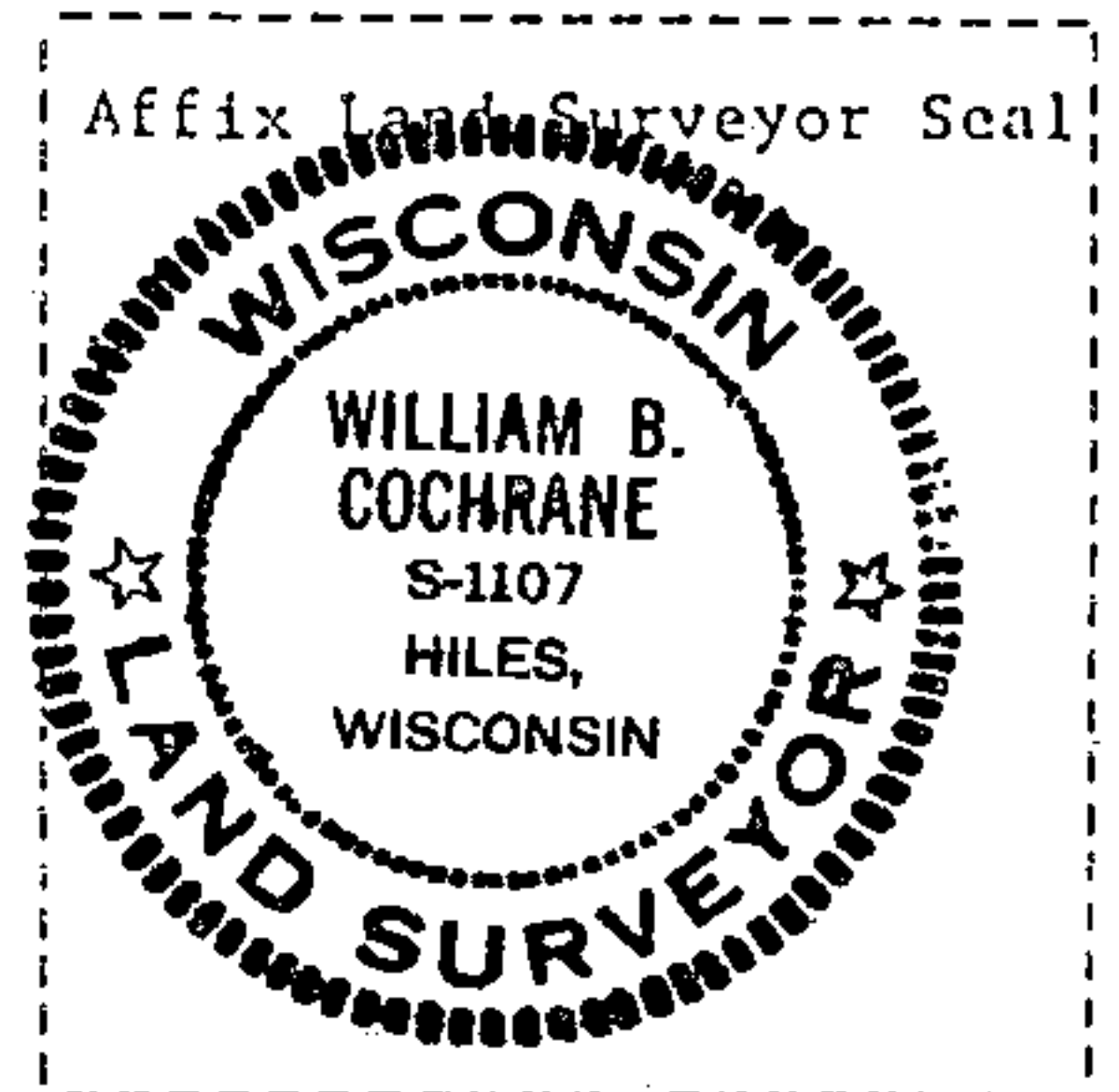
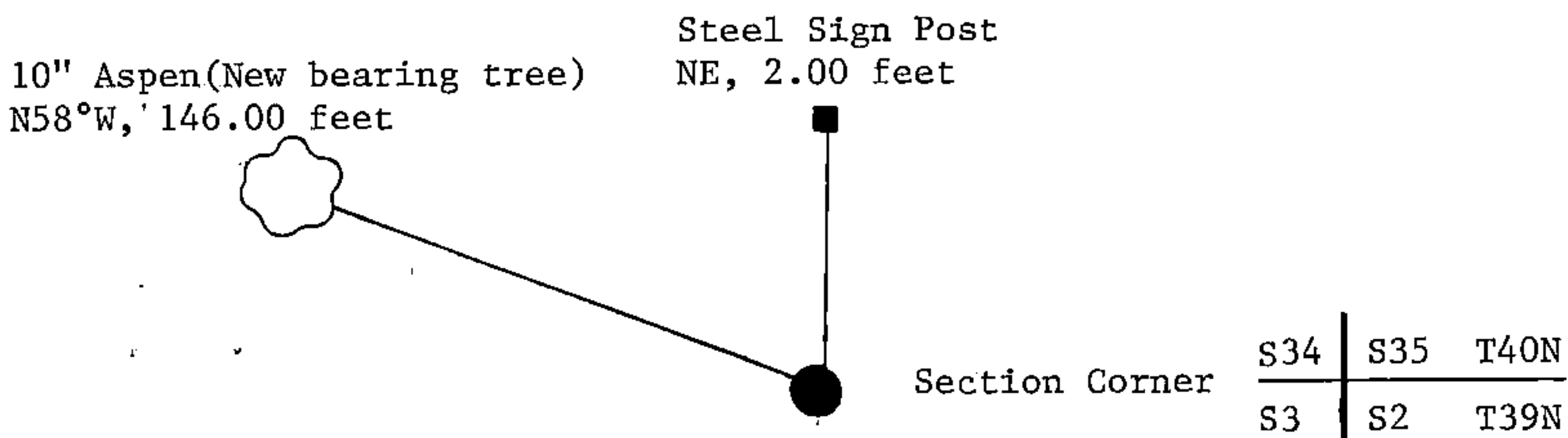
(e) Describe any material discrepancy between the location of the corner as restored or reestablished and the location of that corner as previously restored or reestablished by distance and direction. Show the discrepancy on the plan view drawing under (d), above. Show the distances between the corner as previously restored or reestablished and (1) the corner as restored or reestablished, and (2) to at least 2 of the witness monuments shown on the drawing in (d), above.

See drawing below.

(f) Was the corner restored through acceptance of (1) an obliterated evidence location, or, (2) a found perpetuated location?

Restored through acceptance of a found perpetuated location.

(g&h) Was the corner reestablished through lost corner proportionate methods? If so, show the method, including the directions and distances to other public land survey corners used as evidence or used for proportioning in determining the corner location?



(i) I, William B. Cochrane
(type or print name) certify that the corner location shown on this record was determined by me or under my direction and control and that this U.S. Public Land Survey Monument Record is correct and complete to the best of my knowledge and belief.

William B. Cochrane October 7, 1986
Signature Date

Survey requested by: Edward [Signature] 3-9-87

District Ranger

Date

U.S. PUBLIC LAND SURVEY MONUMENT RECORD

Index No. A-17

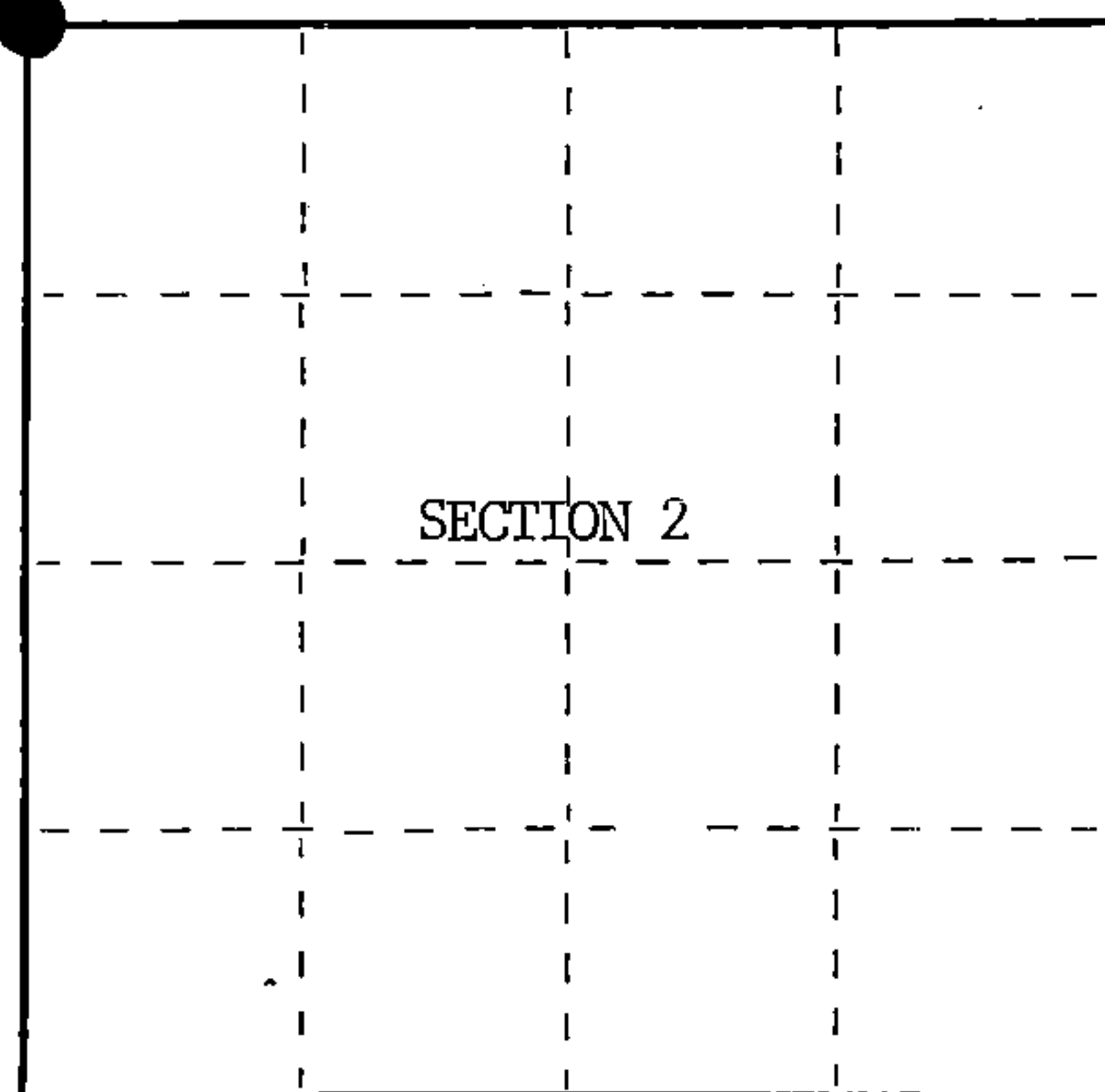
State of Wisconsin }
County of Forest } ss.

I, William B. Cochran, do hereby certify that on the 23rd day of July, 1985, I found evidence of the Northwest Section corner of Section 2 Township 39, North, Range 14 East, Fourth Principal Meridian, as described hereon; and that from this evidence I established a new monument and accessories as described hereon to perpetuate the original location of this corner.

Resident witnesses:

Tony Tillman

State Plane Co-ordinates
N- 268,642.3870
E- 2,326,780.9900



○ = Corner monument restored.

History of original corner establishment:

Original Government Survey in 1858 by Artemas Curtis. Dependent Resurvey in 1945, by Hugh Crawford. From the remains of original bearing trees, set an iron post, 3 feet long, 2 ins. diam., 24 ins. in the ground, with a brass cap mkd; T40N, R14E, S2, S3, S34, S35, T39N, 1945. From which the following bear;

Tamarack	6"	N23°30'E	134 lks.
Tamarack	6"	S56°15'E	47 lks.
Spruce	8"	S41°15'W	45 lks.
Tamarack	6"	N11°45'W	60 lks.

Description of corner evidence found:

Found monument as described and in place, from which the following bear;

Tamarack(Stump)	S56°15'E	31.02 feet
Tamarack(Snag)	N11°45'W	39.60 feet
Steel Sign Post	NE	Alongside Monument

Description of monument and accessories I established to perpetuate the original location of this corner.

Blazed and scribed a new bearing tree;

Aspen	10"	N58°W	146.00 feet
Re-set Steel Sign Post	NE	2.00 feet	

Dated at Hiles, Wis., this 7th day of March, 1986

Signature William B. Cochran Title Land Surveyor Registration No. S-1107
(County Surveyor, Registered Land Surveyor, or other duly authorized official)

Office of Register of Deeds, County of Forest, I hereby certify that the within instrument was filed in this office for record on the 11th day of March, 1987 at 3:30 o'clock P. M.

Paul Achenbrenner
(Register of Deeds)

By _____ Deputy

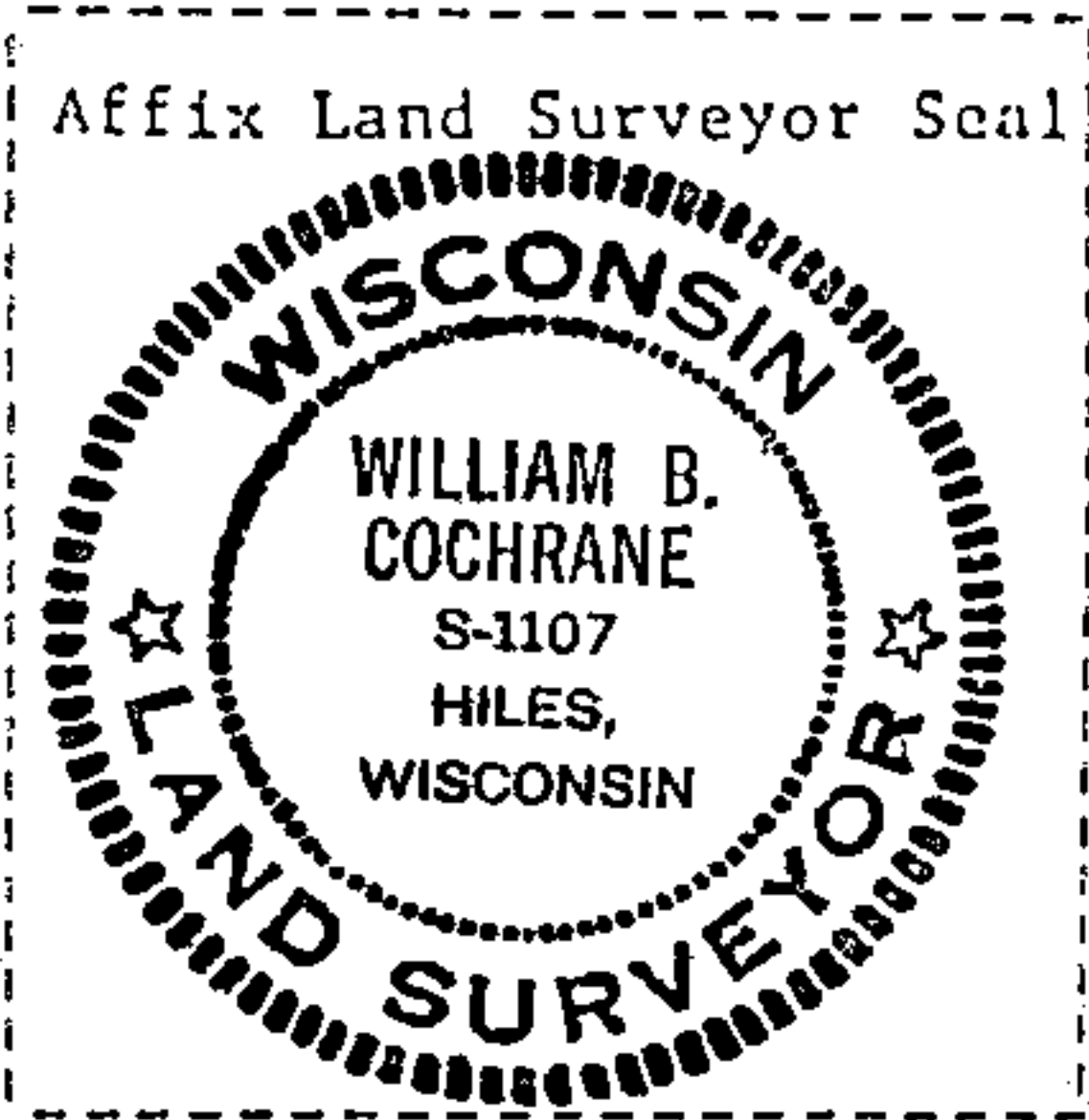
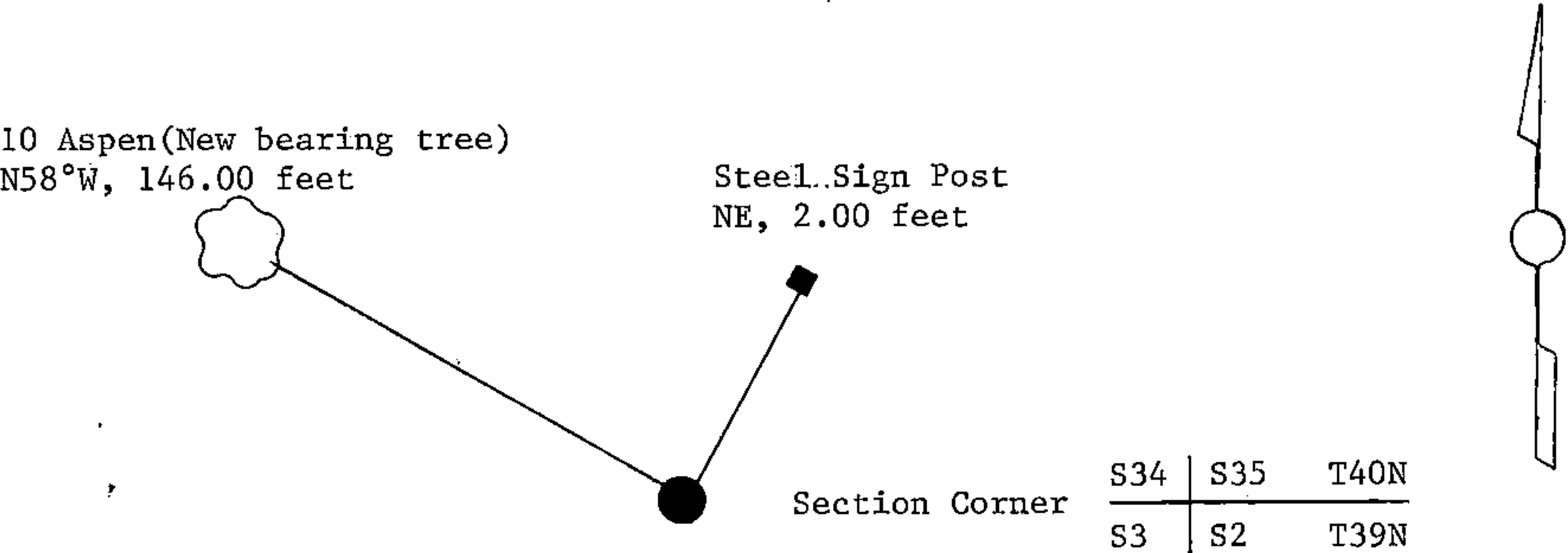
(e) Describe any material discrepancy between the location of the corner as restored or reestablished and the location of that corner as previously restored or reestablished by distance and direction. Show the discrepancy on the plan view drawing under (d), above. Show the distances between the corner as previously restored or reestablished and (1) the corner as restored or reestablished, and (2) to at least 2 of the witness monuments shown on the drawing in (d), above.

See drawing below.

(f) Was the corner restored through acceptance of (1) an obliterated evidence location, or, (2) a found perpetuated location?

Restored through acceptance of a found perpetuated location.

(g&h) Was the corner reestablished through lost corner proportionate methods? If so, show the method, including the directions and distances to other public land survey corners used as evidence or used for proportioning in determining the corner location?



(i) I, William B. Cochrane
(type or print name) certify that the corner location shown on this record was determined by me or under my direction and control and that this U.S. Public Land Survey Monument Record is correct and complete to the best of my knowledge and belief.

William B. Cochrane October 7, 1986
Signature Date

Survey requested by: Edward L. Sager 3-9-87
District Ranger Date