

U.S. PUBLIC LAND SURVEY MONUMENT RECORD

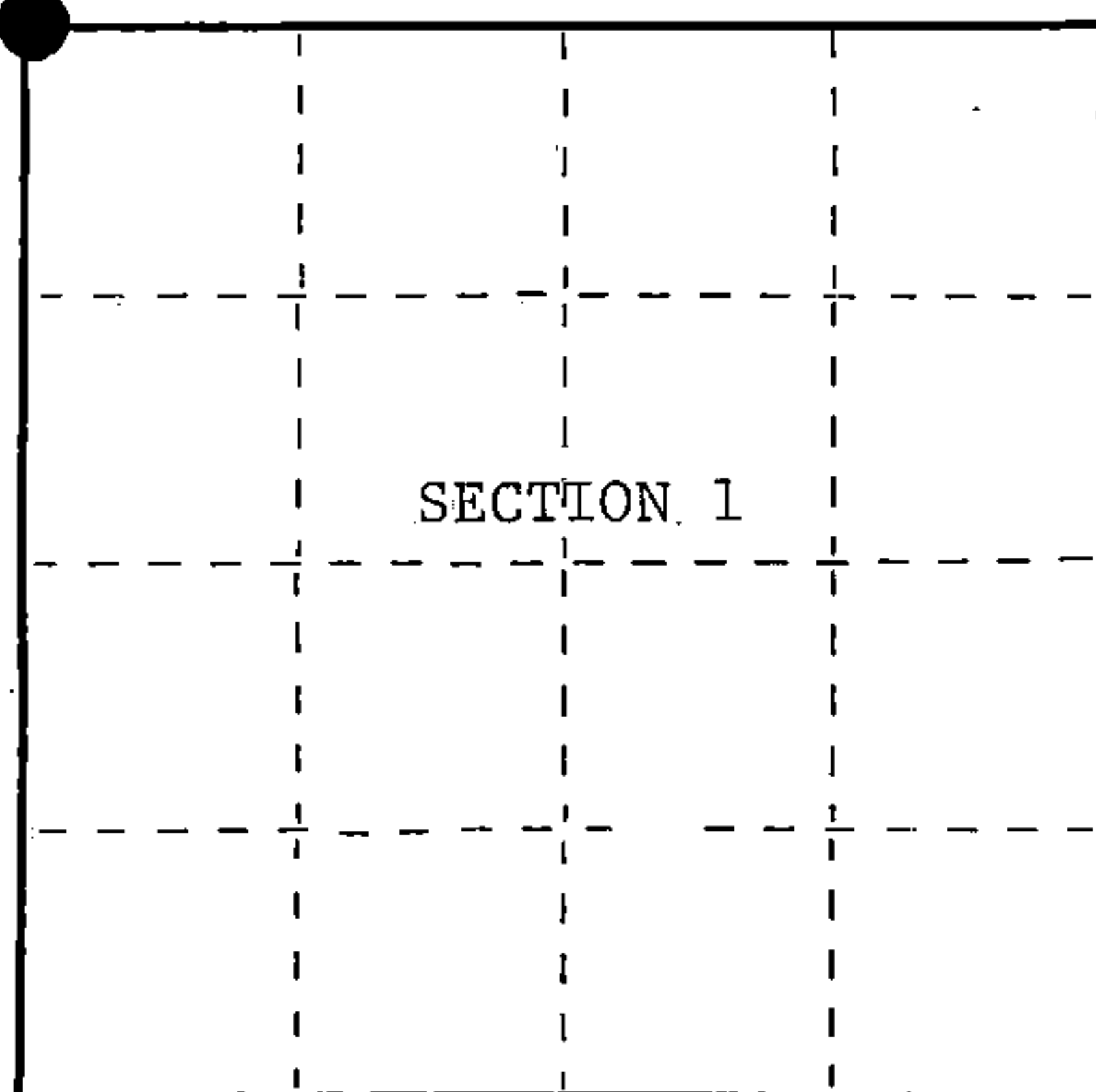
Index No. A-21

State of Wisconsin }
County of Forest } ss.

I, William B. Cochrane, do hereby certify that on the 7th day of September, 1988, I found evidence of the Northwest Section corner of Section 1, Township 39, North, Range 14 East, Fourth Principal Meridian, as described hereon; and that from this evidence I established a new monument and accessories as described hereon to perpetuate the original location of this corner.

Resident witnesses:

State Plane Co-ordinates
N- 268,772.8770
E-2,332,030.0740



○ = Corner monument restored.

History of original corner establishment:

Original Government Survey in 1858 by Alfred Millard.

Dependent Resurvey in 1945 by Hugh B. Crawford. From the remains of original bearing trees, set a concrete monument, 6 inches in diameter and 24 inches long, with a 1 inch brass cap marked; T40N, R14E, S35, S36, S1, S2, T39N, 1945. Blazed and scribed the following bearing trees;

Maple	22"	N80°E	12½ lks.	Maple	30"	N49°W	34 lks.
Maple	8"	S38¼E	226 lks.				
W. Pine	18"	S50°W	197½ lks.				

Description of corner evidence found:

Found monument as described and in place, from which the following bear;

Maple	23"	N80°E	12½ lks. (8.25 feet)
Maple	14"	S38¼E	226 lks. (149.16 feet)
W. Pine	28"	S50°W	197½ lks. (130.35 feet)
Maple	30"	N49°W	34 lks. (22.44 feet)

Description of monument and accessories I established to perpetuate the original location of this corner.

None

Dated at Hiles, Wis., this 14th day of February, 1989

Signature William B. Cochrane Title Land Surveyor Registration No. S-1107
(County Surveyor, Registered Land Surveyor, or other duly authorized official)

Office of Register of Deeds, County of Forest, I hereby certify that the within instrument was filed in this office for record on the 12th day of April, 1989 at 9:10 o'clock A. M.

Paul Aschenbrenner
(Register of Deeds)

By _____ Deputy

FORM NO. 985-A

H.C. Miller Company

Stock No. 26273

DOCUMENT NUMBER

137187

440 14350000

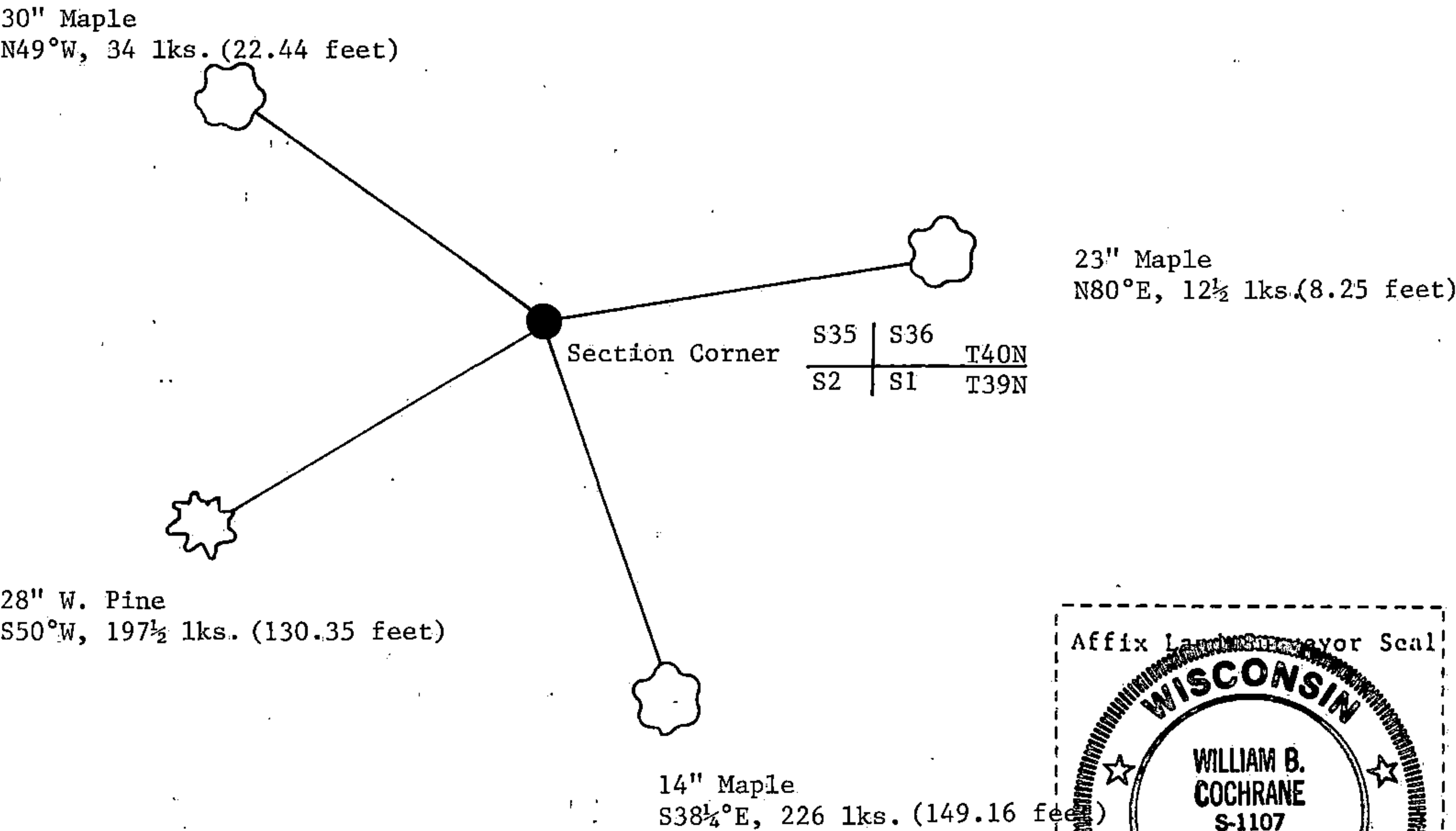
(e) Describe any material discrepancy between the location of the corner as restored or reestablished and the location of that corner as previously restored or reestablished by distance and direction. Show the discrepancy on the plan view drawing under (d), above. Show the distances between the corner as previously restored or reestablished and (1) the corner as restored or reestablished, and (2) to at least 2 of the witness monuments shown on the drawing in (d), above.

See drawing below.

(f) Was the corner restored through acceptance of (1) an obliterated evidence location, or, (2) a found perpetuated location?

Restored through acceptance of a found perpetuated location.

(g&h) Was the corner reestablished through lost corner proportionate methods? If so, show the method, including the directions and distances to other public land survey corners used as evidence or used for proportioning in determining the corner location?



Affix Land Surveyor Seal



(i) I, William B. Cochrane
(type or print name) certify that the corner location shown on this record was determined by me or under my direction and control and that this U.S. Public Land Survey Monument Record is correct and complete to the best of my knowledge and belief.

William B. Cochrane February 14, 1989
Signature Date

Survey requested by; [Signature] 3-22-89
District Ranger Date

Date of Survey; 1987