

136585

## U.S. PUBLIC LAND SURVEY MONUMENT RECORD

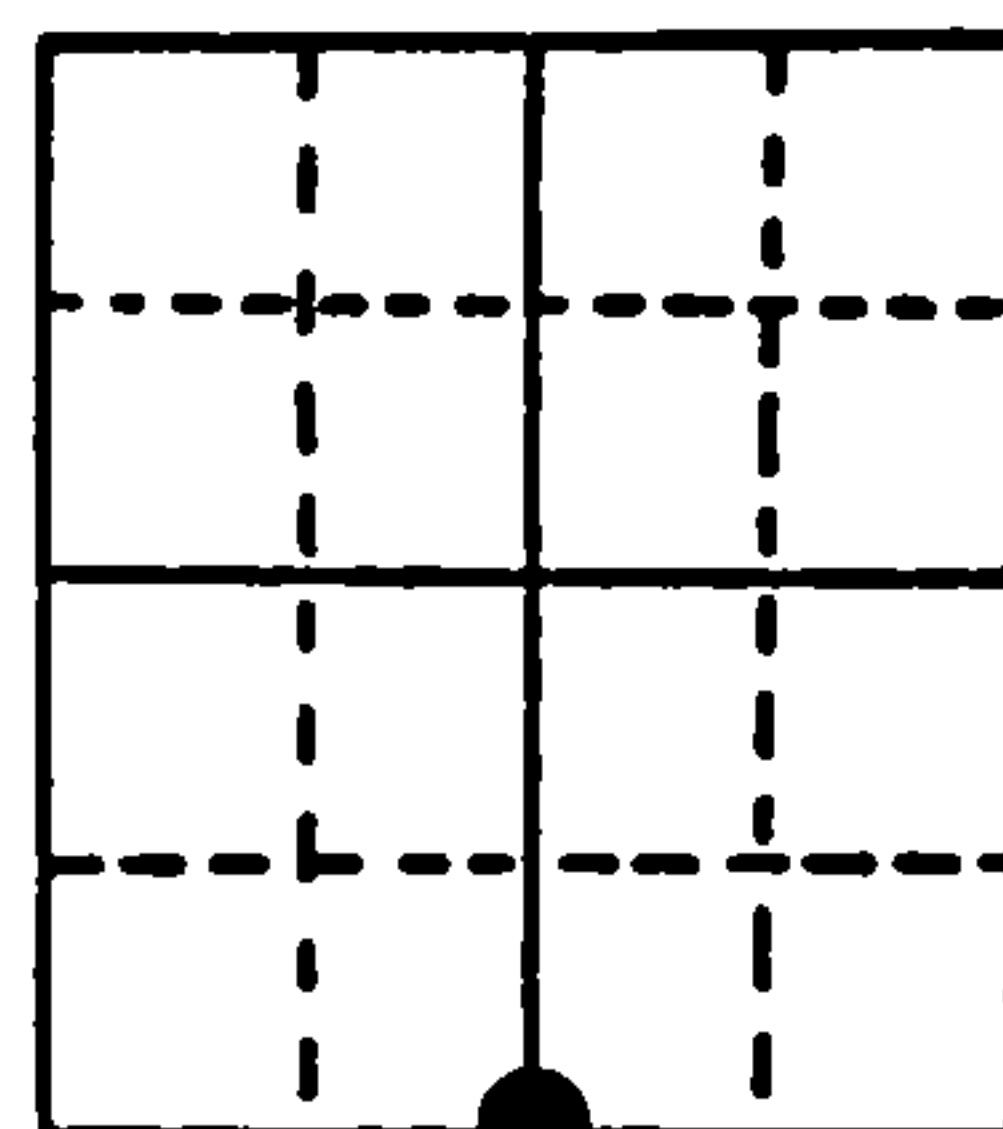
Note: This form is intended and designed to fulfill all requirements of Wisconsin Administrative Code, Chapter A-E 5.02, U.S. Public Land Survey Monument Record (3) (a) (b) (c) (d) (e) (f) (g) (h) (i). An additional sheet may be added if necessary to conform with said requirements.

(a) Corner location: Township 41 North

Range 13 East/West

Town/City/Village Alvin

County Forest



Section 7

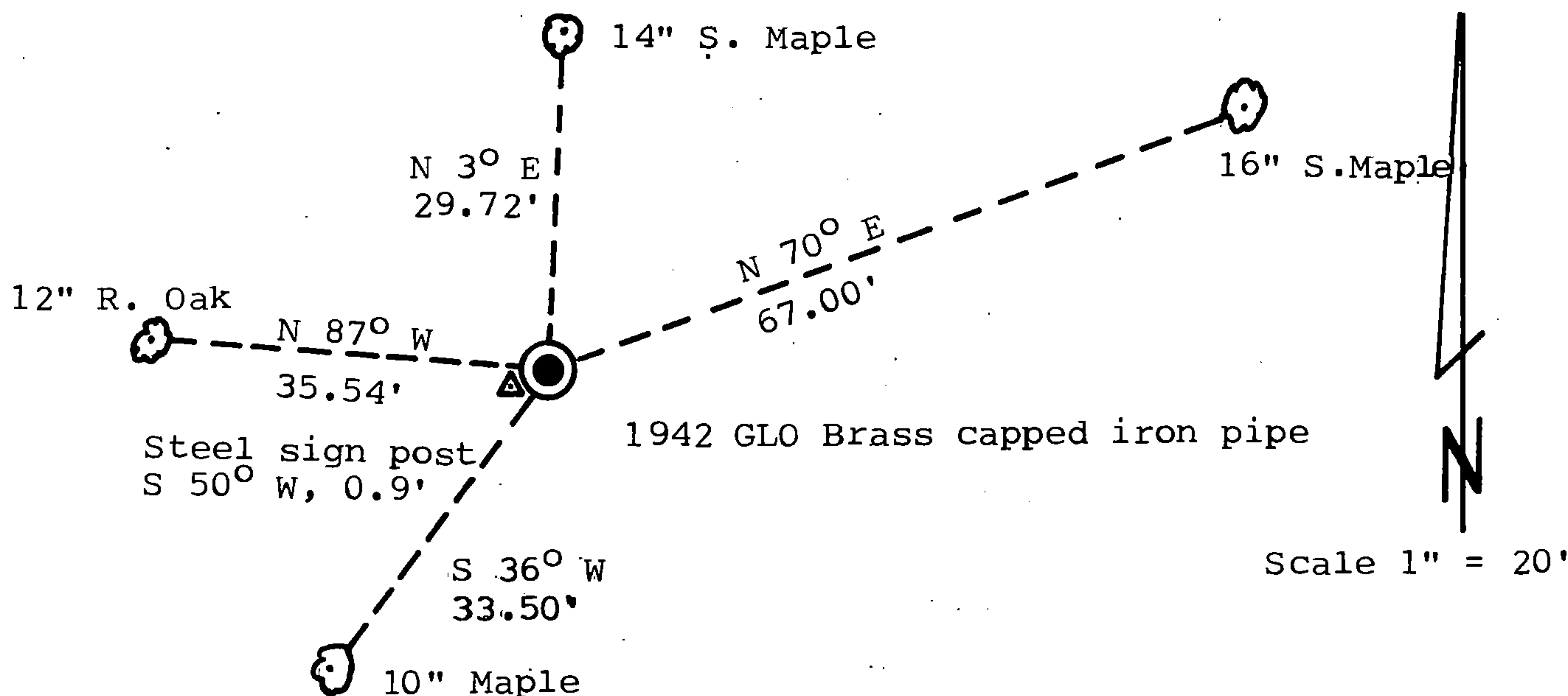
(b) (f) (g) (h) Description of monument found at this corner and if it was accepted, state all evidence (material, testimonial, occupational, plats, records, other monuments) used as a basis for accepting. If not accepted or if nothing was found, state evidence used as basis for establishing location. If reestablished through lost corner proportionate methods, indicate all monuments, distances and directions used to establish.

Found 2" diameter brass capped iron pipe stamped identifying the corner. The monument was established in the 1942 General Land Office Dependent Resurvey.

BT found from 1942 Resurvey: 14" S. Maple N 3° E, 29.72'.

REGISTER'S OFFICE  
Forest County, Wis.  
Received for record this 9th day  
of December, 1988 at  
10:10 o'clock A.M. and recorded  
in Vol. CORNER RESTORATIONS  
page 3  
Paul Heckenbrenner  
Register of Deeds

(c) (d) (e) Plan view of corner with ties to at least 4 witness monuments. If in disagreement with previously established corner, show the distances between the two corners and also indicate the ties to the disputed corner.



(i) I, Stephen J. Favorite, Registered Land Surveyor #S-1616

(type or print name) certify that the corner location on this record was determined by me or under my direction and control and that this U.S. Public Land Survey Monument Record is correct and complete to the best of my knowledge and belief.

Stephen J. Favorite

February 9, 1988

Signature

Survey requested by: Annelle Gorn

District Ranger

Date

11/17/88

Date



Index No.

J-3

441130 70020