

# U.S. PUBLIC LAND SURVEY MONUMENT RECORD

Index No. **Z-13**

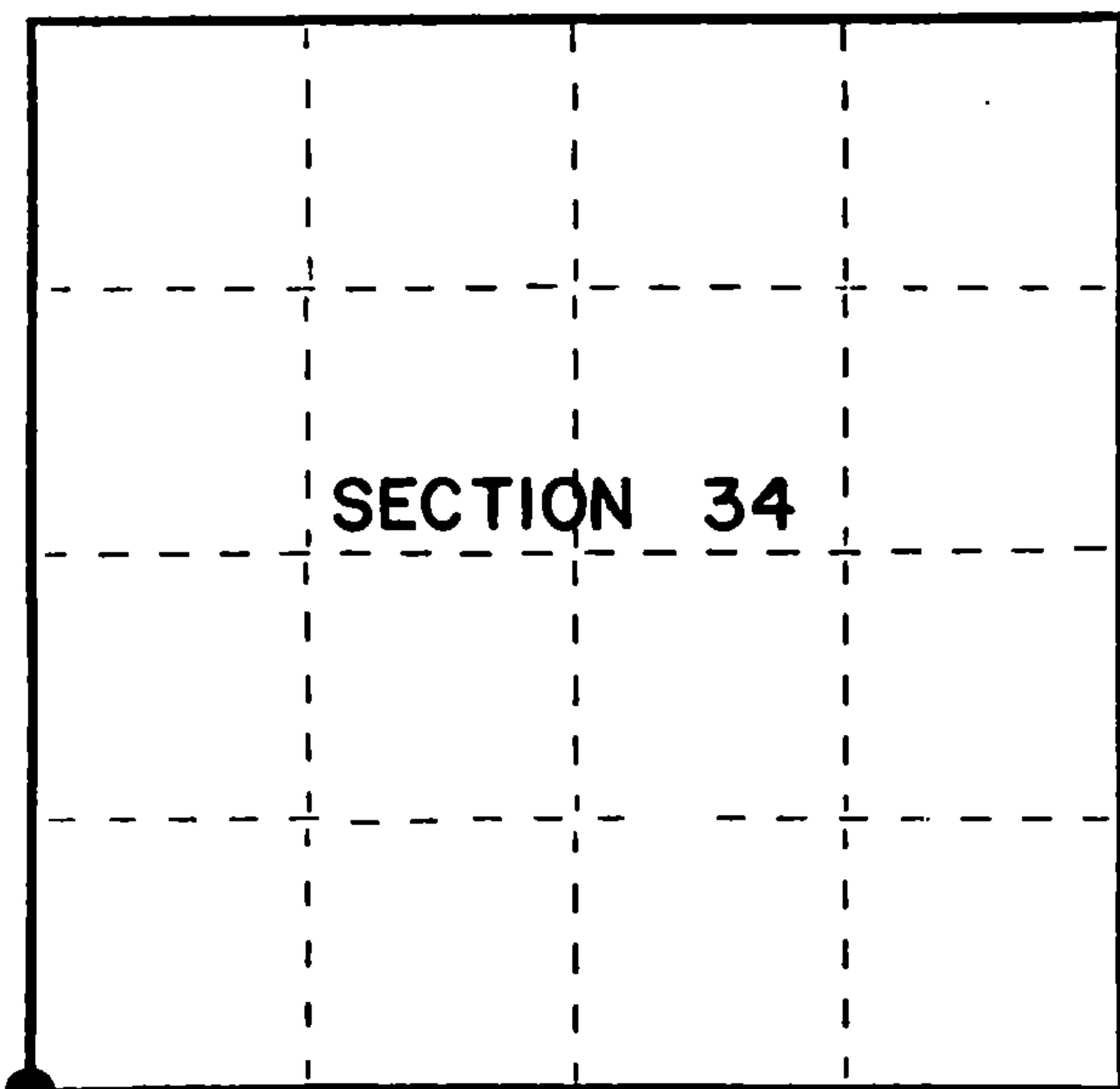
State of Wisconsin

County of Forest } ss.

I, Gary L. Pisoni, do hereby certify that on the 9th day of January, 1989, I found evidence of the Witness Corner to the ~~corner~~ Standard Corner Bet. Secs. 33 & 34 Township 41, North, Range 13 East, Fourth Principal Meridian, as described hereon; and that from this evidence I established a new monument and accessories as described hereon to perpetuate the original location of this corner.

Resident witnesses:

.....  
.....  
.....



○ = Corner monument restored.

History of original corner establishment:

Original Government Survey in 1865 by William E. Daugherty and Alex McDill.

Dependent Resurvey in 1942 by Guy R. Veal. The corner point, which is determined from the remains of original bearing trees, falls in Brule Creek. At a point S89° 44' E, 1.00 chains from the corner position, set a concrete monument, 12 inches long, 6 inches in diameter, 30 inches in the ground, on top of which set a concrete monument, 24 inches long, 6 inches in diameter, with an iron post in center, and a brass cap mkd; U.S. General Land Office Survey, WC, SC, T41N, R13E, S33, S34, 1942. From which the following bear;

Description of corner evidence found: White Pine Stump 32" S79° E 290 lks. (191.40 feet)

Found monument as described above, flush with the ground surface, from which the following bears:

White Pine Stump 32" S79° E 191.40 feet

Monument is on the East Bank of River, at which point the River runs North and South.

Description of monument and accessories I established to perpetuate the original location of this corner.

Set the following new reference objects;

Steel Sign Post	East	1.45 feet
" " "	South	1.20 feet
" " "	West	1.10 feet

Dated at Iron River, MI, Wis., this 7th day of April, 1989.

Signature Gary L. Pisoni Title Land Surveyor Registration No. S-1634  
(County Surveyor, Registered Land Surveyor, or other duly authorized official)

Office of Register of Deeds, County of Forest, I hereby certify that the within instrument was filed in this office for record on the 15th day of May, 1989 at 2:00 o'clock P. M.

Paul A. Schenck  
(Register of Deeds)

By..... Deputy

FORM NO. 985-A

H.C. Miller Company

REGISTER'S OFFICE  
Forest County, Wis.

Received for record this 15th day of May, A.D., 1989 at 2:00 o'clock P. M. and recorded in Vol. CORNER RESTORATIONS page 2-13

DOCUMENT NUMBER

**137403**

Stock No. 26273

44113330000

- e) Describe any material discrepancy between the location of the corner as restored or reestablished and the location of that corner as previously restored or reestablished by distance and direction. Show the discrepancy on the plan view drawing under (d), above. Show the distances between the corner as previously restored or reestablished and (1) the corner as restored or reestablished, and (2) to at least 2 of the witness monuments shown on the drawing in (d), above.

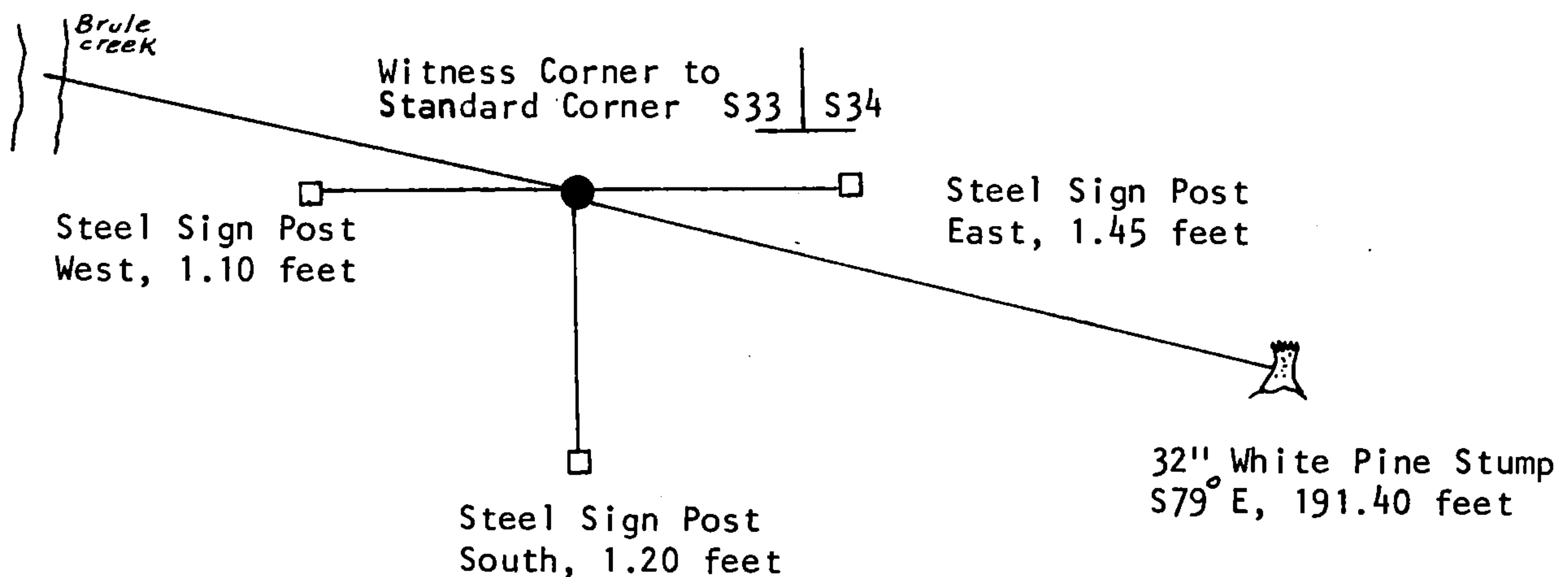
See drawing below.

- f) Was the corner restored through acceptance of (1) an obliterated evidence location, or, (2) a found perpetuated location?

Restored through acceptance of a found perpetuated location.

- g&h) Was the corner reestablished through lost corner proportionate methods? If so, show the method, including the directions and distances to other public land survey corners used as evidence or used for proportioning in determining the corner location?

Standard Section Corner  
N89° 44'W, 1.00 chains



- i) I, Gary L. Pisoni  
(type or print name) certify that the corner location shown on this record was determined by me or under my direction and control and that this U.S. Public Land Survey Monument Record is correct and complete to the best of my knowledge and belief.

Signature

*Gary L. Pisoni*

Date

*April 7<sup>th</sup> 1989*

Survey requested by;

*Tom Donahue*

District Ranger

*5/5/89*

Date