

CORTNEY BRITTEN CLEEREMAN
REGISTER OF DEEDS
FOREST COUNTY WI
PAGES: 1

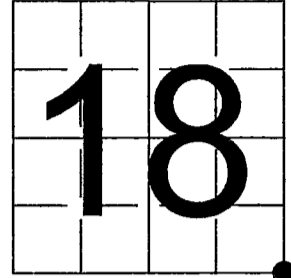
INDEX#: N5

U S PUBLIC LAND SURVEY MONUMENT RECORD

NOTE: This form is intended and designed to fulfill all requirements of Wisconsin Administrative Code, Chapter A-E 7.08 U.S. Public Land Survey Monument Record (3) (a-i)

A-E 7.08(3)(a) Identity of corner:
SOUTHEAST CORNER SECTION 18,
TOWNSHIP 41 NORTH,
RANGE 14 EAST OF THE 4TH PM,
TOWN OF ALVIN, COUNTY OF FOREST

WISCORS - FOREST COUNTY
N: 736,609.709 USft (XXX,XXX.XXX)
E: 865,128.464 USft (XXX,XXX.XXX)
Datum: NAD83 (2011)
GNSS Method RTK
GNSS Control WISCORS VRS



The coordinate value shown has been verified by the average of two or more GPS observations at a markedly different time. Coordinates shown in parenthesis are previously published values.

A-E 7.08(3)(b)

Original Surveyor: William E. Daugherty

Date of Original Survey	Commenced:	June 5, 1865	Original Accessories:			
	Completed:	June 10, 1865	White Pine	12	S 44° W	20 Links
			White Pine	10	N 83° E	36 Links

THENCE:

1982 - Surveyor 1107 - William B. Cochrane - indicates this position as "2 1/2" diameter galvanized pipe monument 5' long filled with concrete, with brass cap" on Forest Co. Surveyor file #411420-19820000. Cochrane recovered 4 reference monuments, and established 2 new reference monuments:

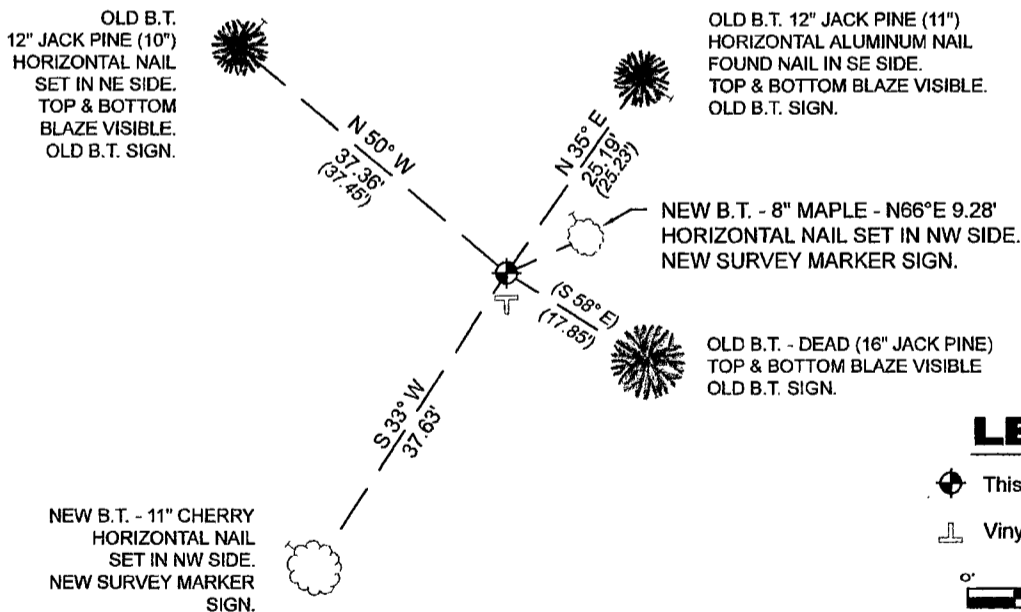
- Jack Pine 16" S 58°30' E 17.85 Ft.
- Spruce (dead) S 25° W 19.75 Ft.
- Jack Pine 10" N 50°30' W 37.45 Ft.
- White Pine (dead) N 01°30' W 42.70 Ft.
- Jack Pine 11" N 35° E 25.23 Ft.
- Spruce 7" N 01°30' W 42.70 Ft.

1996 - Surveyor 1107 - William B. Cochrane (c/o Surveyor 1651 - Alan D. Harrison) - indicates this position as "2 1/2" diameter galvanized iron pipe monument 60" long with brass cap" on Forest Co. Surveyor file #411417-19971215 & #411420-19971215. Cochrane recites the same reference monuments listed above.

October 02, 2023 - I found a 2.5" diameter galvanized iron pipe with a 3" diameter brass cap stamped to identify corner location. The monument extends ±15" above grade. I also found 2 of the previously mentioned bearing trees alive and standing, and established 2 new bearing trees as shown below.

BEARINGS LISTED TO THE NEAREST
SECOND ARE REFERENCED TO WISCONSIN
COUNTY COORDINATE REFERENCE
SYSTEM - FOREST COUNTY ZONE.
ALL OTHER BEARINGS ARE MAGNETIC.

A-E 7.08(3)(c)(d) Plan view of corner with references to at least 4 witness monuments.



LEGEND

- This Corner
 - Vinyl T-post, set ±1.5 feet south of corner
- Scale: 0' 20' 40'

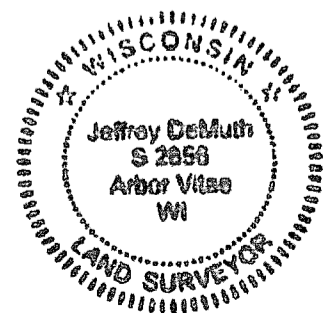
A-E 7.08(3)(e) 1865 Surveyor set a post, 1982 & 1996 Surveyor found a galvanized iron pipe. I found a 2.5" diameter galvanized iron pipe with a 3" diameter brass cap stamped to identify the corner location.

A-E 7.08(3)(f) I accept this monument as a FOUND PERPETUATED LOCATION of the corner.

A-E 7.08(3)(g)(h) This corner was not determined through lost-corner-proportionate methods.

A-E 7.08(3)(i) I, Jeffrey L. DeMuth, Professional Land Surveyor No. S-2656, hereby certify that the corner location on this record was determined by me or under my direction and control, and that this U.S. Public Land Survey Monument Record is correct and complete to the best of my knowledge, and belief.

October 04, 2023
DATE



44114180000

N5