

U.S. PUBLIC LAND SURVEY MONUMENT RECORD

Index No. R-17

State of Wisconsin }
County of Forest } ss.

I, Gary L. Pisoni, do hereby
certify that on the 16th day
of July, 1991, I found
evidence of the Southwest Section
corner of Section 23
Township 41, North, Range
14 East, Fourth Principal Meridian,
as described hereon; and that from this evidence
I established a new monument and accessories
as described hereon to perpetuate the original
location of this corner.

Resident witnesses:

History of original corner establishment:
Original Government Survey in 1865 by William E. Daugherty. North between
Sections 26 and 27, at 80.00 chs., set Section Corner Post to Sections 22, 23,
26 and 27, from which the following bear:

Birch	10"	N80°W	26 lks.
Fir	8"	S30°E	34 lks.

Description of corner evidence found:
No original corner evidence was recovered.

I restored the corner position using double proportionate methods between the
Meander Corner to the East and the Northwest Section Corner of Section 27 and
between the Meander Corner to the North and Gaspardo Creek.

Description of monument and accessories I established to perpetuate the original location of this corner.
At the corner position, set a 2½ inch diameter aluminum pipe monument, 3 feet long,
3 inches above the ground, with an aluminum cap stamped; T41N R14E, S22, S23, S26,
S27, 1991, S-1634. From which the following new blazed and scribed bearing trees bear;
(measurements taken to a nail in side of tree)

Balsam	7"	S65°E	40.78 feet
B. Cherry	7"	S21°E	24.82 feet
W. Spruce	16"	S32°W	6.44 feet
W. Spruce	8"	S82°W	23.28 feet
Steel Sign Post		North	0.67 feet

Monument is located on the North side of a Forest Service road approximately 70 feet
into the woods.

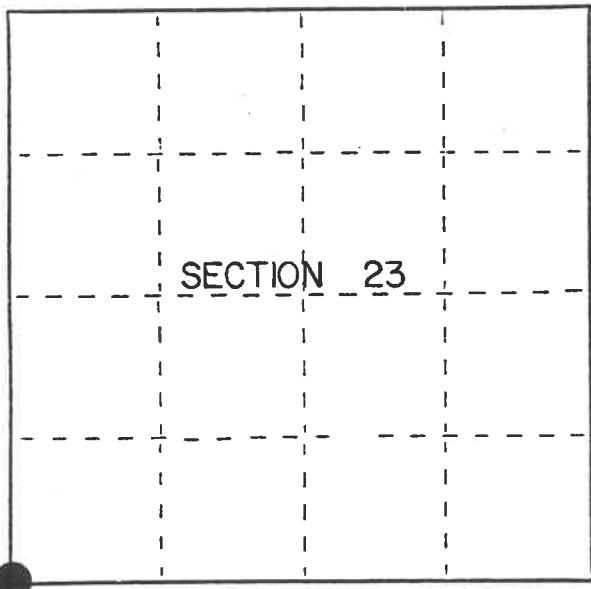
Dated at Iron River, MI, ~~was~~ this 16th day of February, 1992

Signature Gary L. Pisoni Title Land Surveyor Registration No. S-1634
(County Surveyor, Registered Land Surveyor, or other duly authorized official)

Office of Register of Deeds, County of Forest, I hereby certify that the within
instrument was filed in this office for record on the 10th day of March, 1993
at 10:45 o'clock A. M.

Paul Scheubanner
(Register of Deeds)

By _____ Deputy



● = Corner monument restored.

FORM NO. 985-A
H.C. Miller Company
Stock No. 26273
146875

44114220000

e) Describe any material discrepancy between the location of the corner as restored or reestablished and the location of that corner as previously restored or reestablished by distance and direction. Show the discrepancy on the plan view drawing under (d), above. Show the distances between the corner as previously restored or reestablished and (1) the corner as restored or reestablished, and (2) to at least 2 of the witness monuments shown on the drawing in (d), above.

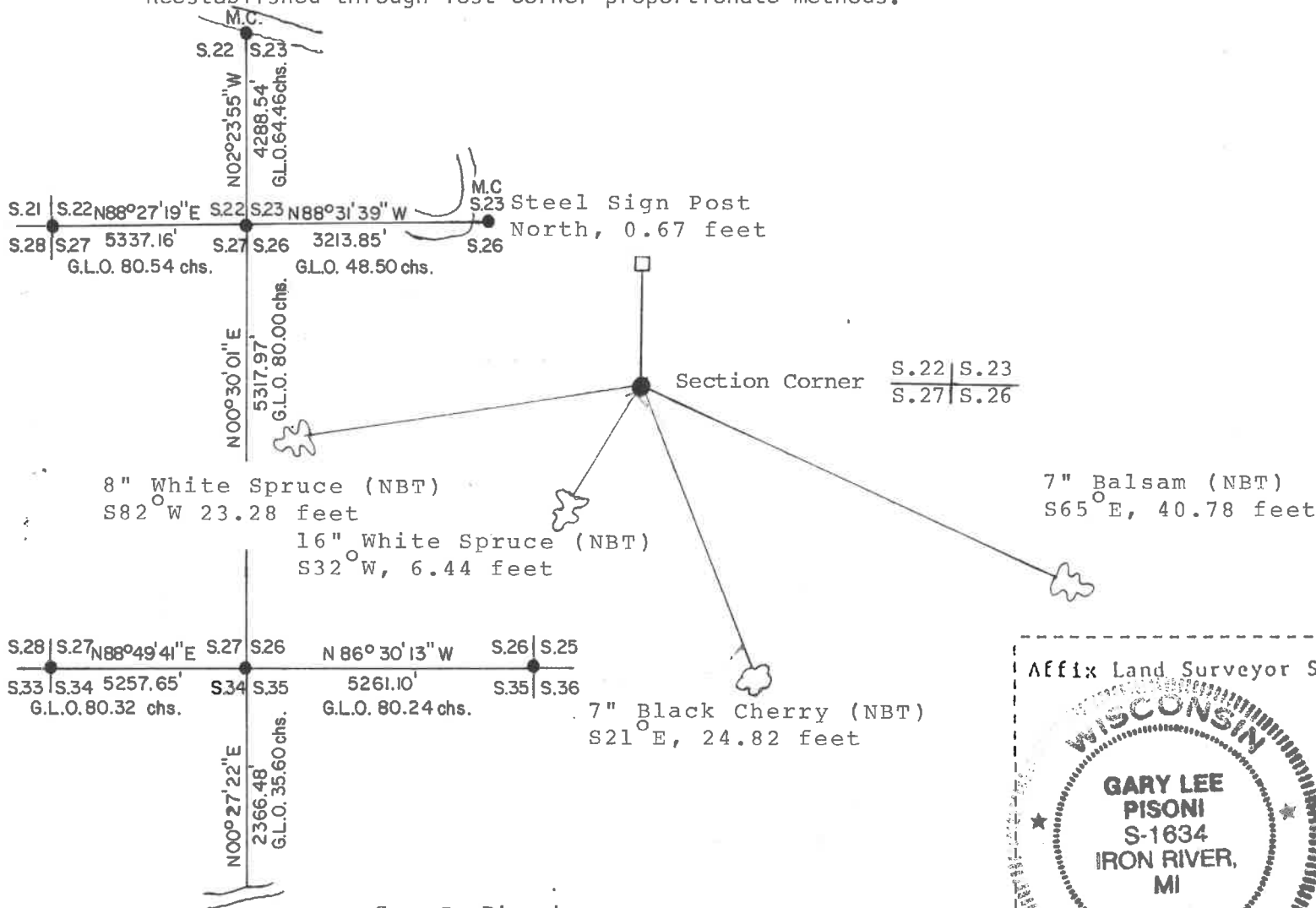
See drawing below.

(f) Was the corner restored through acceptance of (1) an obliterated evidence location, or, (2) a found perpetuated location?

Restored through lost corner proportionate methods.

(g&h) Was the corner reestablished through lost corner proportionate methods? If so, show the method, including the directions and distances to other public land survey corners used as evidence or used for proportioning in determining the corner location?

Reestablished through lost corner proportionate methods.



Gary L. Pisoni

(i) I, Gary L. Pisoni (type or print name) certify that the corner location shown on this record was determined by me or under my direction and control and that this U.S. Public Land Survey Monument Record is correct and complete to the best of my knowledge and belief.

Signature

Date

Survey requested by;

John Carr
District Ranger

10/2/92
Date

