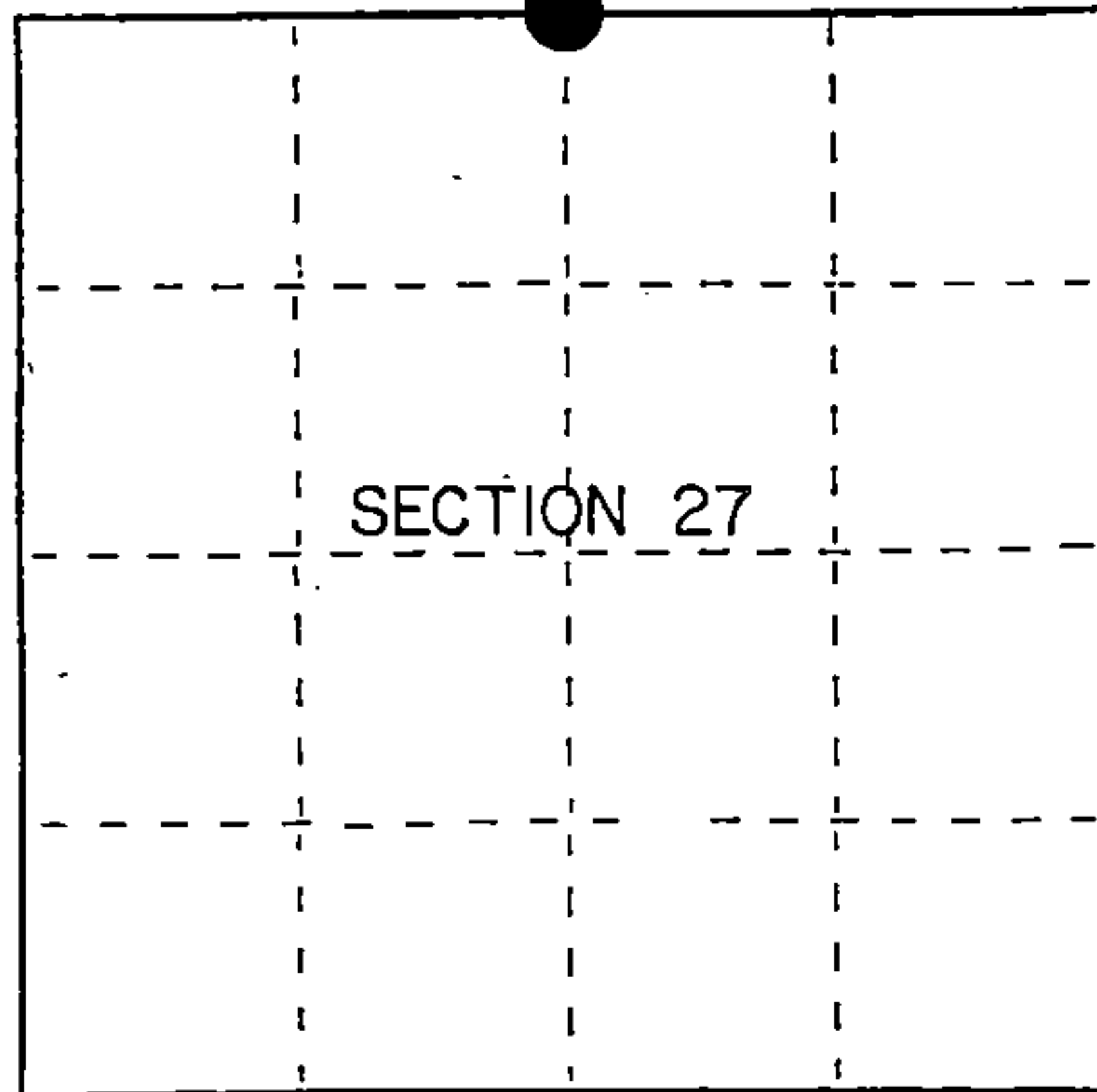


State of Wisconsin }
County of Forest } ss.

I, Gary L. Pisoni, do hereby
certify that on the 16th day
of July, 1991, I found
evidence of the North Quarter
corner of Section 27
Township 41, North, Range
14 East, Fourth Principal Meridian,
as described hereon; and that from this evidence
I established a new monument and accessories
as described hereon to perpetuate the original
location of this corner.

Resident witnesses:



● = Corner monument restored.

History of original corner establishment:

Original Government Survey in 1865 by William E. Daugherty. West corrected between
Sections 22 and 27, at 40.27 chs., set Quarter Section Post to Sections 22 and 27,
from which the following bear;

Sugar	12"	N24°W	12 lks.
Elm	15"	S13°E	27 lks.

Description of corner evidence found:

No original corner evidence was recovered.

I restored the corner position at proportionate distance and on line between the
Northwest and Northeast Section Corners of Section 27.

Description of monument and accessories I established to perpetuate the original location of this corner.
At the corner position, set a 2½ inch diameter aluminum pipe monument, 3 feet long,
3 inches above the ground, with an aluminum cap stamped; T41N R14E, 1/4, S22, S27,
1991, S-1634. From which the following new blazed and scribed bearing trees bear;
(measurements taken to a nail in side of tree)

S. Maple	10"	S84°E	16.06 feet
S. Maple	7"	S12°E	16.58 feet
S. Maple	9"	S65°W	11.48 feet
S. Maple	8"	N56°W	19.00 feet
Steel Sign Post		N39°E	0.70 feet

Dated at Iron River, MI, ~~xxxx~~ this 16th day of February, 1992

Signature Gary L. Pisoni Title Land Surveyor Registration No. S-1634
(County Surveyor, Registered Land Surveyor, or other duly authorized official)

Office of Register of Deeds, County of Forest, I hereby certify that the within
instrument was filed in this office for record on the 10th day of March, 1993
at 10:45 o'clock A. M.

Paul Ashcraft
(Register of Deeds)

By _____ Deputy

u) Describe any material discrepancy between the location of the corner as restored or reestablished and the location of that corner as previously restored or reestablished by distance and direction. Show the discrepancy on the plan view drawing under (d), above. Show the distances between the corner as previously restored or reestablished and (1) the corner as restored or reestablished, and (2) to at least 2 of the witness monuments shown on the drawing in (d), above.

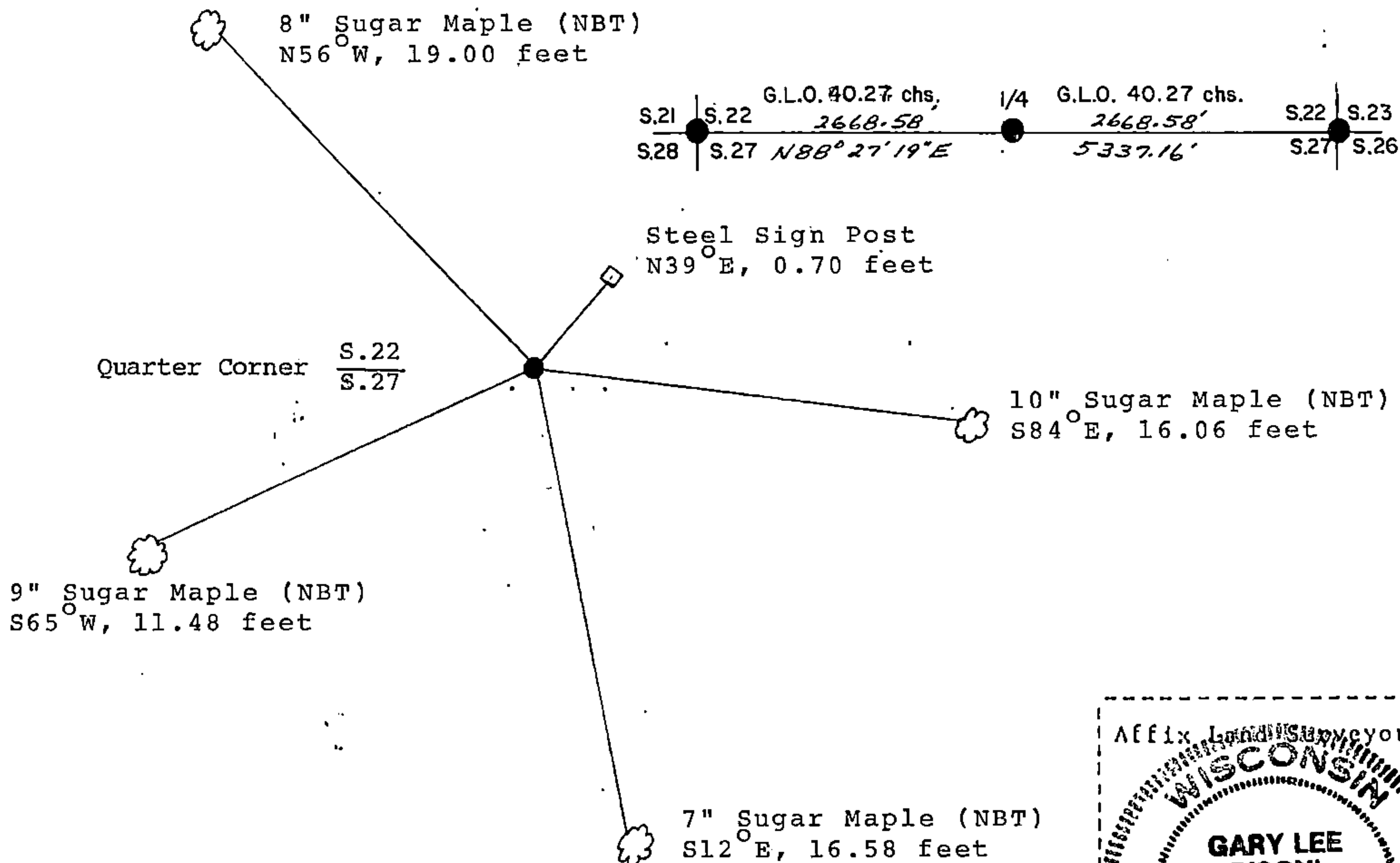
See drawing below.

(r) Was the corner restored through acceptance of (1) an obliterated evidence location, or, (2) a found perpetuated location?

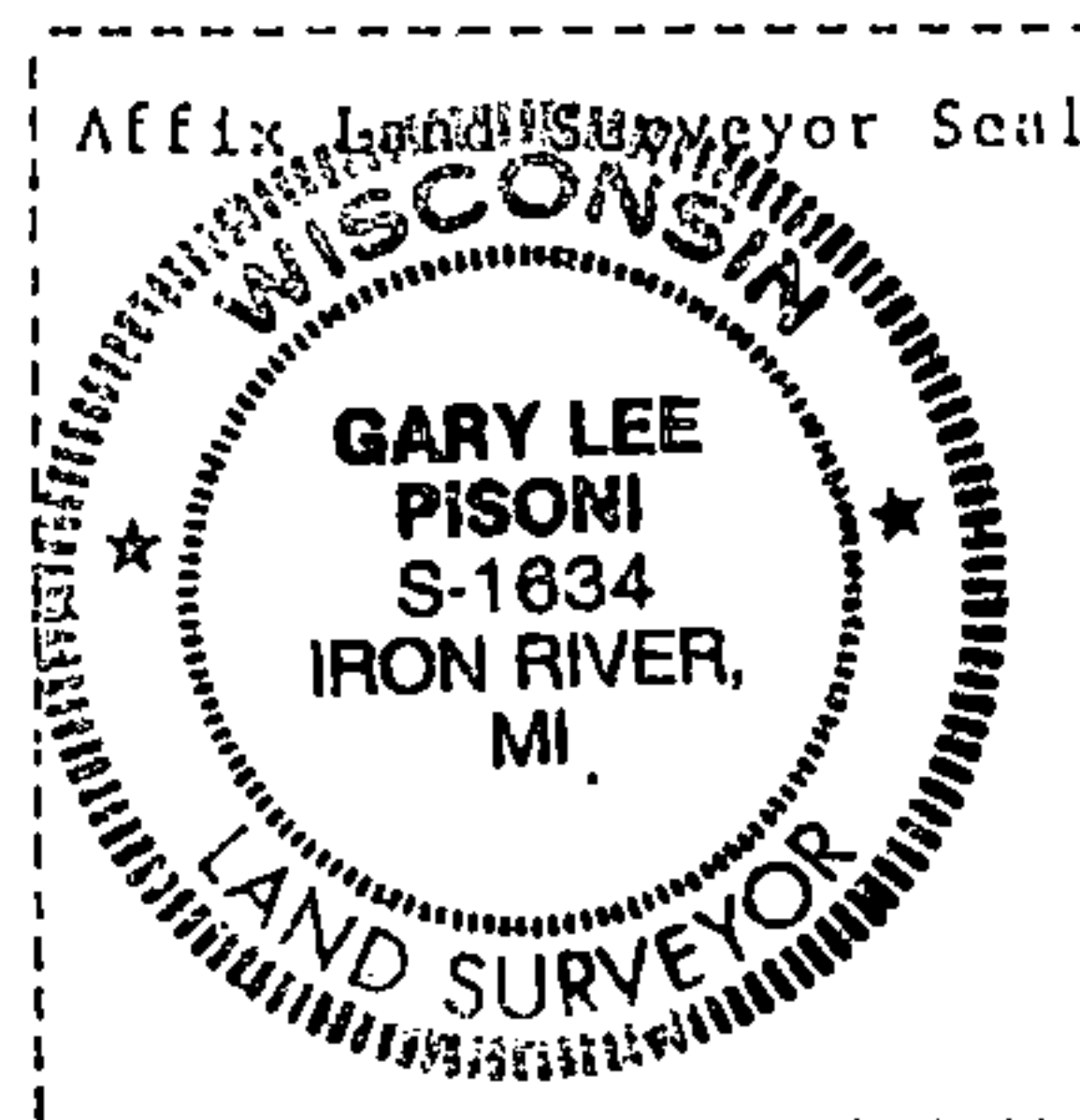
Restored through lost corner proportionate methods.

(g&h) Was the corner reestablished through lost corner proportionate methods? If so, show the method, including the directions and distances to other public land survey corners used as evidence or used for proportioning in determining the corner location?

Reestablished through lost corner proportionate methods.



(i) 1. Gary L. Pisoni
(Type or print name) certify that the corner location shown on this record was determined by me or under my direction and control and that this U.S. Public Land Survey Monument Record is correct and complete to the best of my knowledge and belief.



Gary L. Pisoni March 13th 1992
Signature Date

Survey requested by; M. Carr 10/2/92
District Ranger Date