

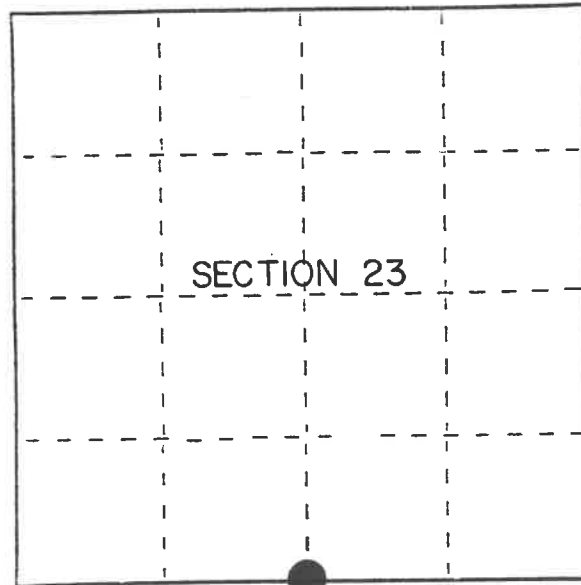
U.S. PUBLIC LAND SURVEY MONUMENT RECORD

Index No. R-19

State of Wisconsin }
County of Forest } ss.

I, Gary L. Pisoni, do hereby
certify that on the 24th day
of July, 1991, I found
evidence of the South Quarter
corner of Section 23
Township 41, North, Range
14 East, Fourth Principal Meridian,
as described hereon; and that from this evidence
I established a new monument and accessories
as described hereon to perpetuate the original
location of this corner.

Resident witnesses:



● = Corner monument restored.

History of original corner establishment:
Original Government Survey in 1865 by William E. Daugherty. West Corrected
between Sections 23 and 26, at 40.00 chs., set Quarter Section Post to Sections
23 and 26, from which the following bear;

Cedar	10"	N83°W	21 lks.
Spruce	8"	S12°W	15 lks.

Description of corner evidence found:
No original corner evidence was recovered.

I restored the corner position at proportionate distance and on line between the
Meander Corner to the East and the Southwest Section Corner of Section 23.

Description of monument and accessories I established to perpetuate the original location of this corner.
At the corner position, set a 2½ inch diameter aluminum pipe monument, 3 feet long,
3 inches above the ground, with an aluminum cap stamped; T41N R14E, 1/4, S23, S26,
1991, S-1634. From which the following new blazed and scribed bearing trees bear;
(measurements taken to a nail in side of tree)

Cedar	13"	S64°E	72.57 feet
Ash	7"	S80°W	9.86 feet
Cedar	7"	N74°W	85.11 feet
Steel Sign Post		South	0.54 feet

Monument is 12 feet South of River Bank.

Dated at Iron River, MI, ~~Wis~~ this 16th day of February, 1992

Signature Gary L. Pisoni Title Land Surveyor Registration No S-1634

Office of Register of Deeds, County of Forest, I hereby certify that the within
instrument was filed in this office for record on the 10th day of March, 1993
at 10:45 o'clock A. M.

Paul Schumaker
(Register of Deeds)

By _____ Deputy

e) Describe any material discrepancy between the location of the corner as restored or reestablished and the location of that corner as previously restored or reestablished by distance and direction. Show the discrepancy on the plan view drawing under (d), above. Show the distances between the corner as previously restored or reestablished and (1) the corner as restored or reestablished, and (2) to at least 2 of the witness monuments shown on the drawing in (d), above.

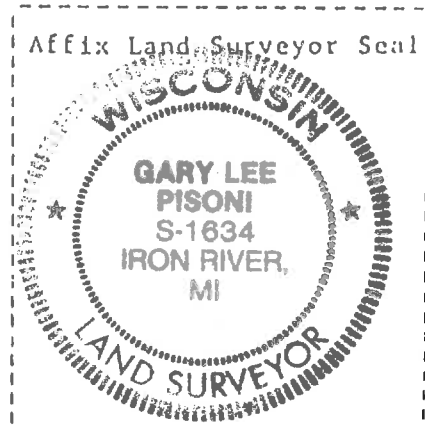
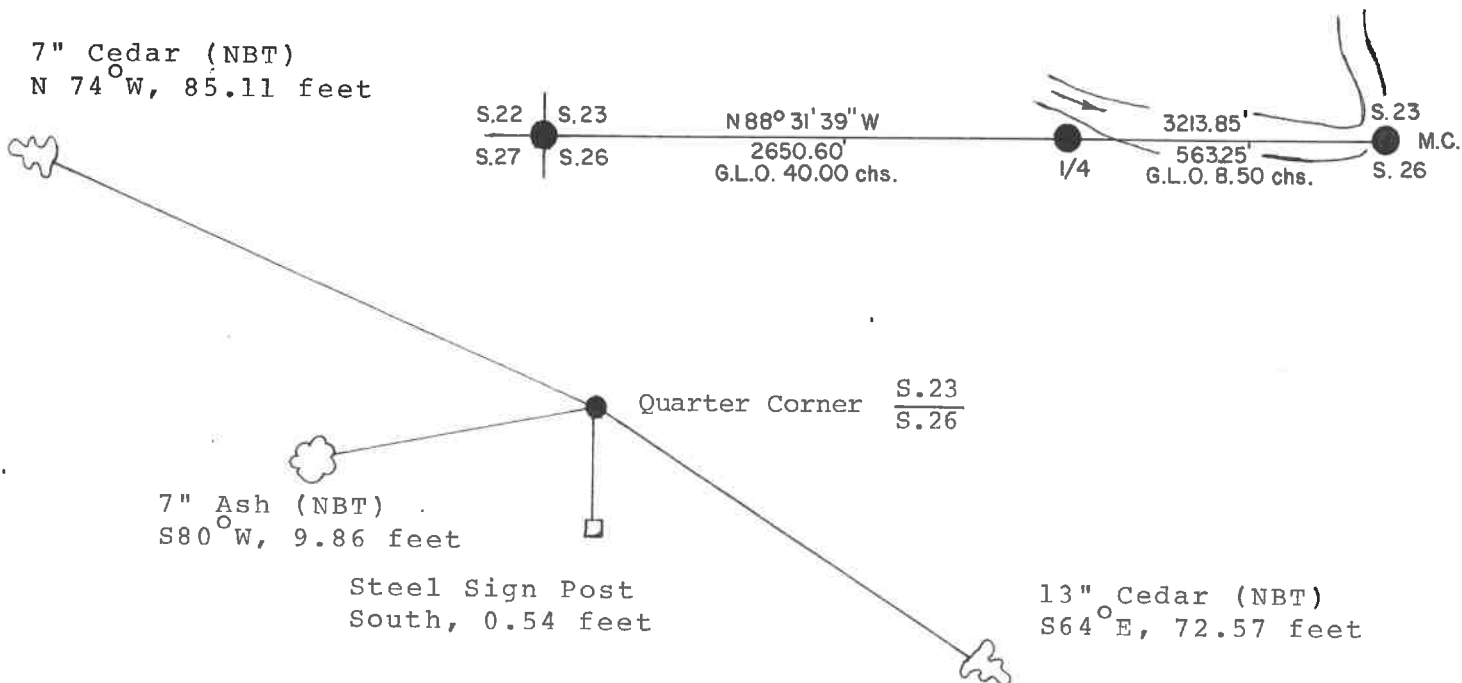
See drawing below.

(f) Was the corner restored through acceptance of (1) an obliterated evidence location, or, (2) a found perpetuated location?

Restored through lost corner proportionate methods.

(g&h) Was the corner reestablished through lost corner proportionate methods? If so, show the method, including the directions and distances to other public land survey corners used as evidence or used for proportioning in determining the corner location?

Reestablished through lost corner proportionate methods.



(i) Gary L. Pisoni
(Type or print name) certify that the corner location shown on this record was determined by me or under my direction and control and that this U.S. Public Land Survey Monument Record is correct and complete to the best of my knowledge and belief.

Signature Gary L. Pisoni Date March 13th 1992

Survey requested by: [Signature] District Ranger Date 10/2/92