

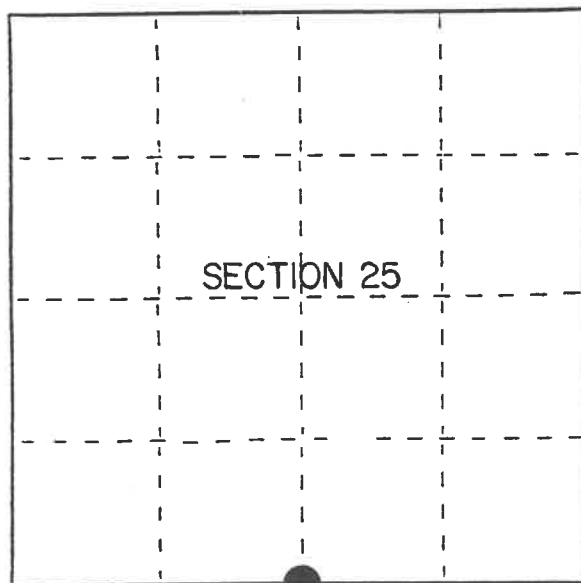
U.S. PUBLIC LAND SURVEY MONUMENT RECORD

Index No. V-23

State of Wisconsin }
 County of Forest } ss.

I, Gary L. Pisoni, do hereby
 certify that on the 4th day
 of September, 1991, I found
 evidence of the South Quarter
 corner of Section 25
 Township 41, North, Range
14 East, Fourth Principal Meridian,
 as described hereon; and that from this evidence
 I established a new monument and accessories
 as described hereon to perpetuate the original
 location of this corner.

Resident witnesses:



● = Corner monument restored.

History of original corner establishment:

Original Government Survey in 1865 by William E. Daugherty. West corrected between
 Sections 25 and 36, at 40.23 chs., set Quarter Sections 25 and 36, from which the
 following bear;

Fir	8"	N48°E	35 lks.
Hemlock	10"	S70°E	17 lks.

Description of corner evidence found:

No original corner evidence was recovered.

I restored the corner position at proportionate distance and on line between the
 Southwest and Southeast Section corners of Section 25.

Description of monument and accessories I established to perpetuate the original location of this corner.

At the corner position, set a 2½ inch diameter aluminum pipe monument, 3 feet long,
 3 inches above the ground, with an aluminum cap stamped; T41N R14E, 1/4, S25, S36,
 1991, S-1634. From which the following new blazed and scribed bearing trees bear;
 (measurements taken to a nail in side of tree)

S. Maple	6"	N51°E	74.65 feet
Y. Birch	6"	S44°E	45.14 feet
S. Maple	6"	S34°W	39.64 feet
S. Maple	7"	N33°W	51.74 feet
Steel Sign Post		East	23.39 feet

Monument located in West lane of North-South Forest Service road.

Dated at Iron River, MI ~~xxxx~~ this 16th day of February, 1992

Signature Gary L. Pisoni Title Land Surveyor Registration No. S-1634
 (County Surveyor, Registered Land Surveyor, or other duly authorized official)

Office of Register of Deeds, County of Forest, I hereby certify that the within
 instrument was filed in this office for record on the 10th day of March, 1993
 at 10:45 o'clock A M.

Paul Aschenbrenner
 (Register of Deeds)

By _____ Deputy

- 4.) Describe any material discrepancy between the location of the corner as restored or reestablished and the location of that corner as previously restored or reestablished by distance and direction. Show the discrepancy on the plan view drawing under (d), above. Show the distances between the corner as previously restored or reestablished and (1) the corner as restored or reestablished, and (2) to at least 2 of the witness monuments shown on the drawing in (d), above.

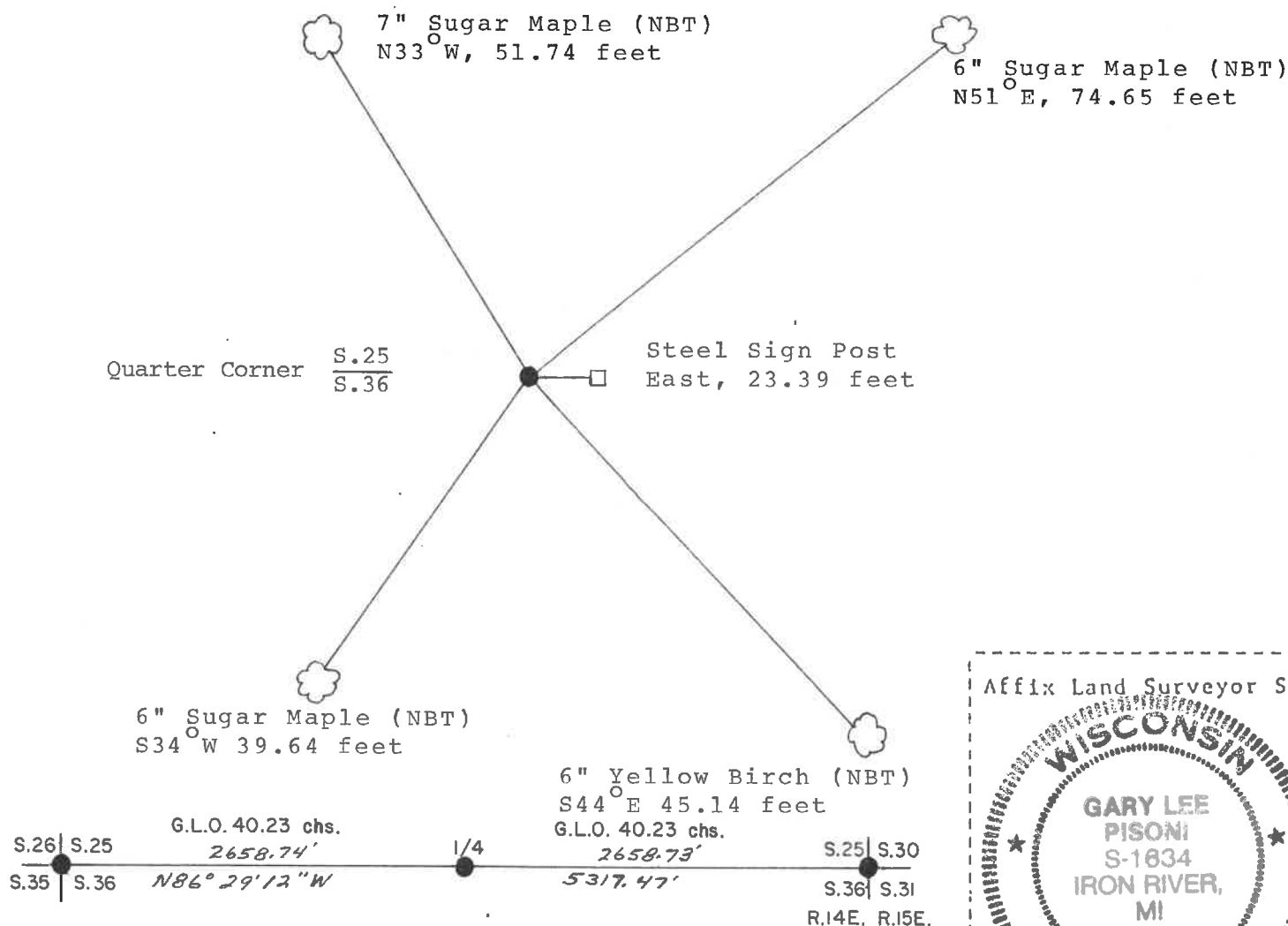
See drawing below.

- (r) Was the corner restored through acceptance of (1) an obliterated evidence location, or, (2) a found/perpetuated location?

Restored through lost corner proportionate methods.

- (g&h) Was the corner reestablished through lost corner proportionate methods? If so, show the method, including the directions and distances to other public land survey corners used as evidence or used for proportioning in determining the corner location?
- Reestablished through lost corner proportionate methods.

Reestablished through lost corner proportionate methods.



- (i) I, Gary L. Pisoni
(Type or print name) certify that the corner location shown
on this record was determined by me or under my direction and
control and that this U.S. Public Land Survey Monument Record is
correct and complete to the best of my knowledge and belief.

Signature Dany S. Proini Date March 13th 1992

Survey requested by; M. Carr 10/2/92
District Ranger Date

District Ranger

Date _____