

U.S. PUBLIC LAND SURVEY MONUMENT RECORD

Index No. Z-9

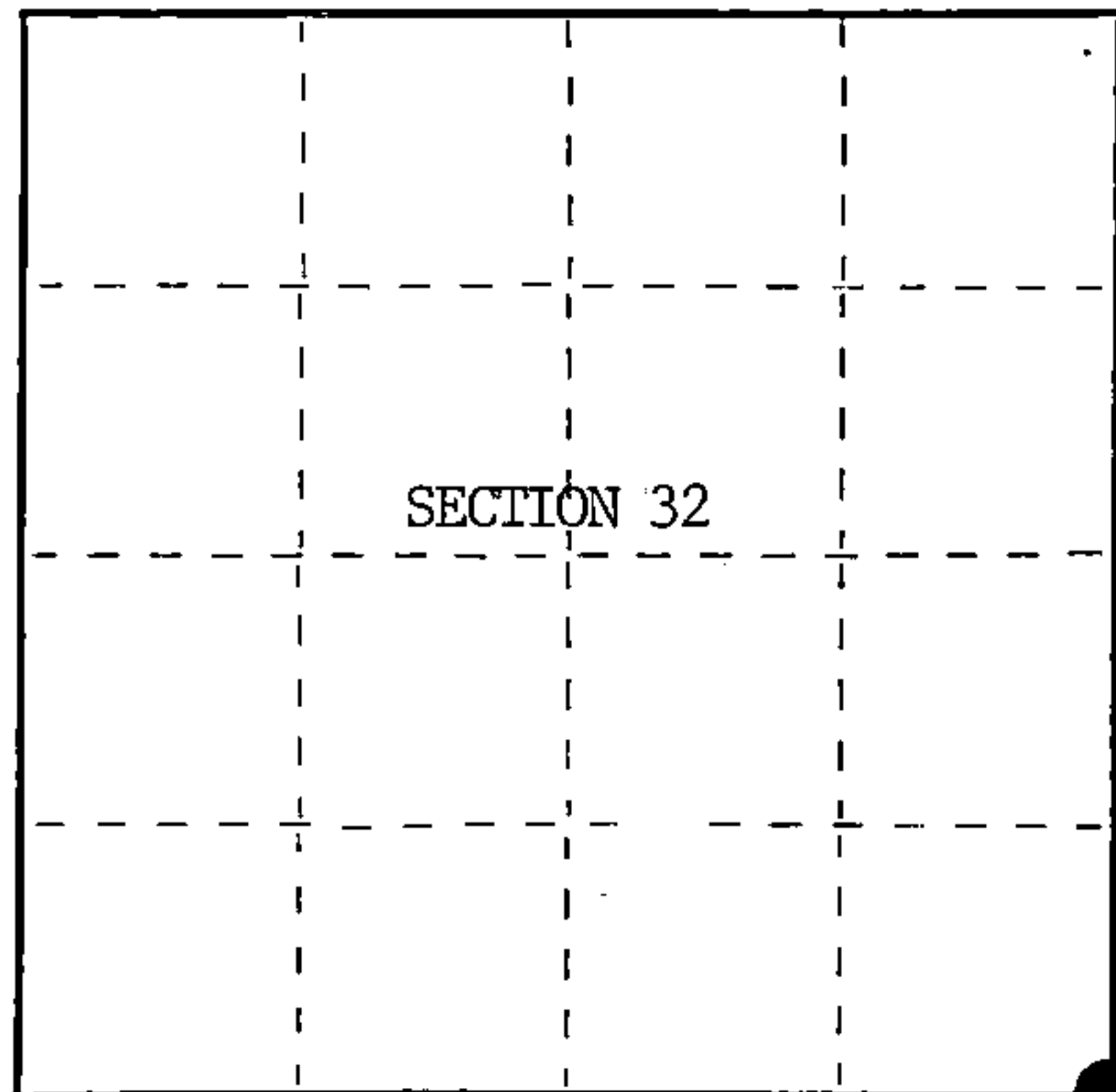
State of Wisconsin }
County of Forest } ss.

I, William B. Cochrane, do hereby certify that on the 23rd day of July, 1986, I found evidence of the Southeast Standard Section corner of Section 32 Township 41 North, Range 14 East, Fourth Principal Meridian, as described hereon; and that from this evidence I established a new monument and accessories as described hereon to perpetuate the original location of this corner.

Resident witnesses:

David Brownell

Tony Tillman



○ = Corner monument restored.

History of original corner establishment:

Original Government Survey in 1858 by Artemas Curtis. Dependent Resurvey in 1945 by Hugh B. Crawford. East on the South side of Section 32, 79.30 chains, the point for corner is determined from the remains of original bearing trees. At the corner point, set a concrete monument, 2 feet long, 6 inches in dia., 18 inches in the ground, with an iron post in center, and a brass cap mkd; SC, T41N, R14E, S32, S33, 1945. From which the following bear;

Y. Birch	22"	N29°00'E	107 lks. (70.62 feet)
Maple	12"	N43°45'W	79 lks. (52.14 feet)
Cedar Post	5"	N 3°00'W	4 lks. (2.64 feet)

Description of corner evidence found:

Found monument as described and in place, from which the following bear;

Y. Birch	25"	N29°00'E	70.62 feet
Maple	16"	N43°45'W	52.14 feet
Cedar Post	5"	N 3°00'W	2.64 feet

Description of monument and accessories I established to perpetuate the original location of this corner.

None

Dated at Hiles, Wis., this 1st day of October, 1986

Signature William B. Cochrane Title Land Surveyor Registration No. S-1107
(County Surveyor, Registered Land Surveyor, or other duly authorized official)

Office of Register of Deeds, County of Forest, I hereby certify that the within instrument was filed in this office for record on the 11th day of March, 1987 at 3:30 o'clock P. M.

Paul Aschenbrenner
(Register of Deeds)

By Deputy

FORM NO. 985-A

M.C. Miller Company

Stock No. 26273

DOCUMENT NUMBER 132468

4411432-0000

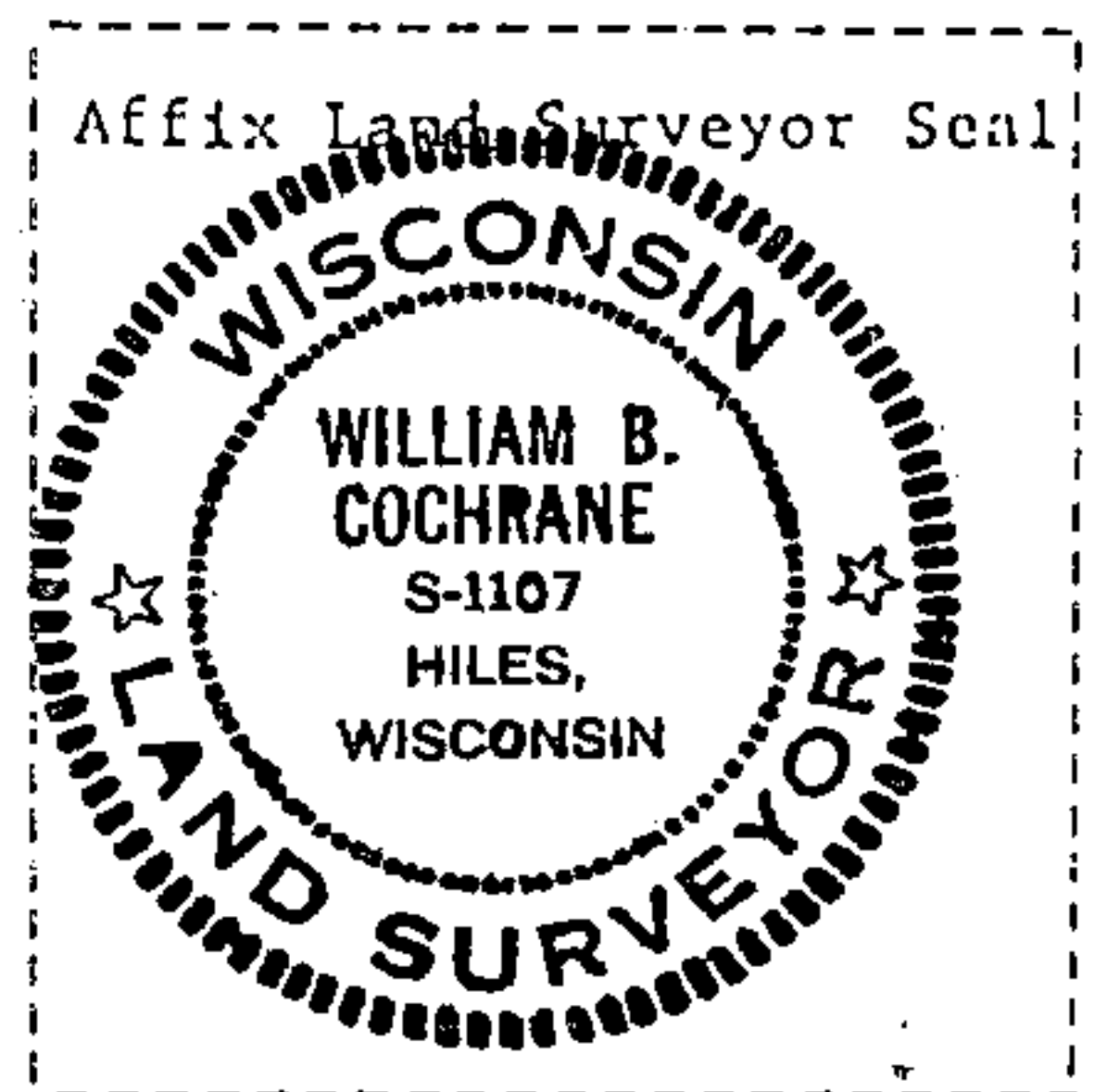
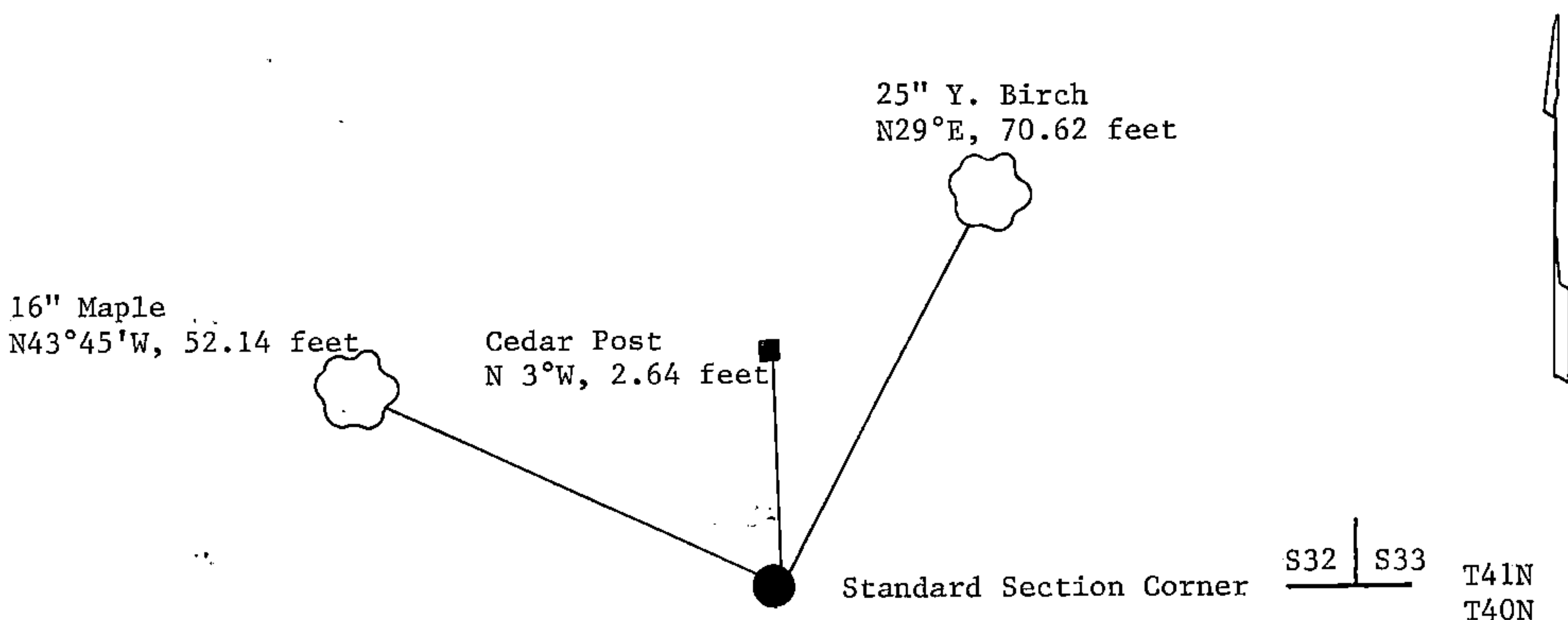
(e) Describe any material discrepancy between the location of the corner as restored or reestablished and the location of that corner as previously restored or reestablished by distance and direction. Show the discrepancy on the plan view drawing under (d), above. Show the distances between the corner as previously restored or reestablished and (1) the corner as restored or reestablished, and (2) to at least 2 of the witness monuments shown on the drawing in (d), above.

See drawing below.

(f) Was the corner restored through acceptance of (1) an obliterated evidence location, or, (2) a found perpetuated location?

Restored through acceptance of a found perpetuated location.

(g&h) Was the corner reestablished through lost corner proportionate methods? If so, show the method, including the directions and distances to other public land survey corners used as evidence, or used for proportioning in determining the corner location?



(i) I, William B. Cochrane
(type or print name) certify that the corner location shown on this record was determined by me or under my direction and control and that this U.S. Public Land Survey Monument Record is correct and complete to the best of my knowledge and belief.

William B. Cochrane October 14, 1986
Signature Date

Certificate ready for filing: [Signature] 3-9-87
District Ranger Date