

U.S. PUBLIC LAND SURVEY MONUMENT RECORD

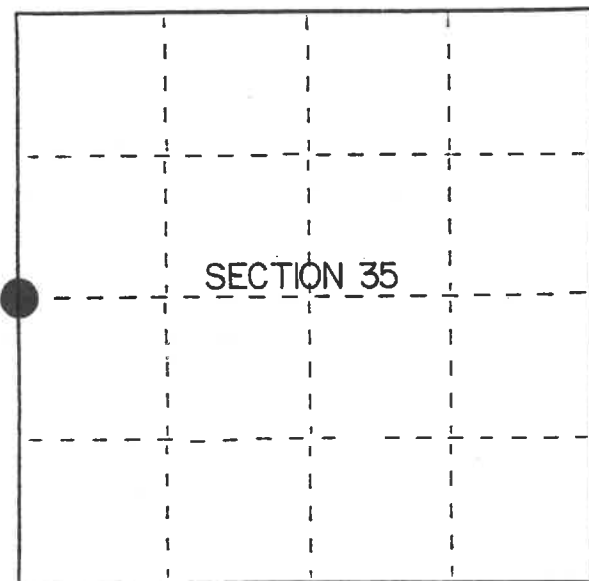
Index No. X-17

State of Wisconsin }
County of Forest } ss.

I, Gary L. Pisoni, do hereby
certify that on the 1st day
of August, 1991, I found
evidence of the West Quarter
corner of Section 35
Township 41, North, Range
14 East, Fourth Principal Meridian,
as described hereon; and that from this evidence
I established a new monument and accessories
as described hereon to perpetuate the original
location of this corner.

Resident witnesses:

opinion is held by the U.S.F.S. for work they have done further West. I used Gaspardo Creek and the wood post on
the Brule River as fixed points and proportionate from there. Since the West 1/4 cor. of Sec. 35 is so close to the
creek, I proportioned the 1/4 cor. by extending the bearing from the North to the South and left all of the
remaining error South of the West 1/4 Cor. Description of monument and accessories I established to perpetuate the original location of this corner.
of Section 35.



● = Corner monument restored.

History of original corner establishment:

Original Government Survey in 1865 by William E. Daugherty. North between Sections
34 and 35, at 40.00 chains, set Quarter Section Post to Sections 34 and 35, from
which the following bear;

Spruce	6"	S46°E	37 links
Spruce	4"	S48°W	6 links

44.40 chains North, creek 25 links wide NE

Description of corner evidence found:

No original corner evidence was recovered.

After examining all of the records for the West Section lines of Sections 35, 26, and 23
and finding the total actual distance for these lines to be approx. 677' to long and
finding that the dist. from Gaspardo Creek to the Brule River is within 85' of GLO
dist. and the old blazed lines seem to match the dist. from Gaspardo Creek to the Brule
River. I felt that all of the error must lie South of Gaspardo Creek. This same

At the corner position, set a 2½" diameter aluminum pipe monument, 5 feet long,
3 inches above the ground, with an aluminum cap stamped; T41N R14E, 1/4, S34, S35,
1991, S-1634. From which the following new blazed and scribed bearing trees bear;
(Measurements are taken to a nail in side of tree)

Tamarack	7"	N59°W	10.60 feet
B. Spruce	4"	N87°E	35.27 feet
Tamarack	8"	S33°E	24.04 feet
Tamarack	7"	S52°W	23.38 feet
Steel Sign Post		South	0.85 feet

Dated at Iron River, MI, this 16th day of February, 1992

Signature Gary L. Pisoni Title Land Surveyor Registration No. S-1634
(County Surveyor, Registered Land Surveyor, or other duly authorized official)

Office of Register of Deeds, County of Forest, I hereby certify that the within
instrument was filed in this office for record on the 10th day of March, 1993
at 10:45 o'clock A.M.

Paul Aschendrenner
(Register of Deeds)

By _____ Deputy

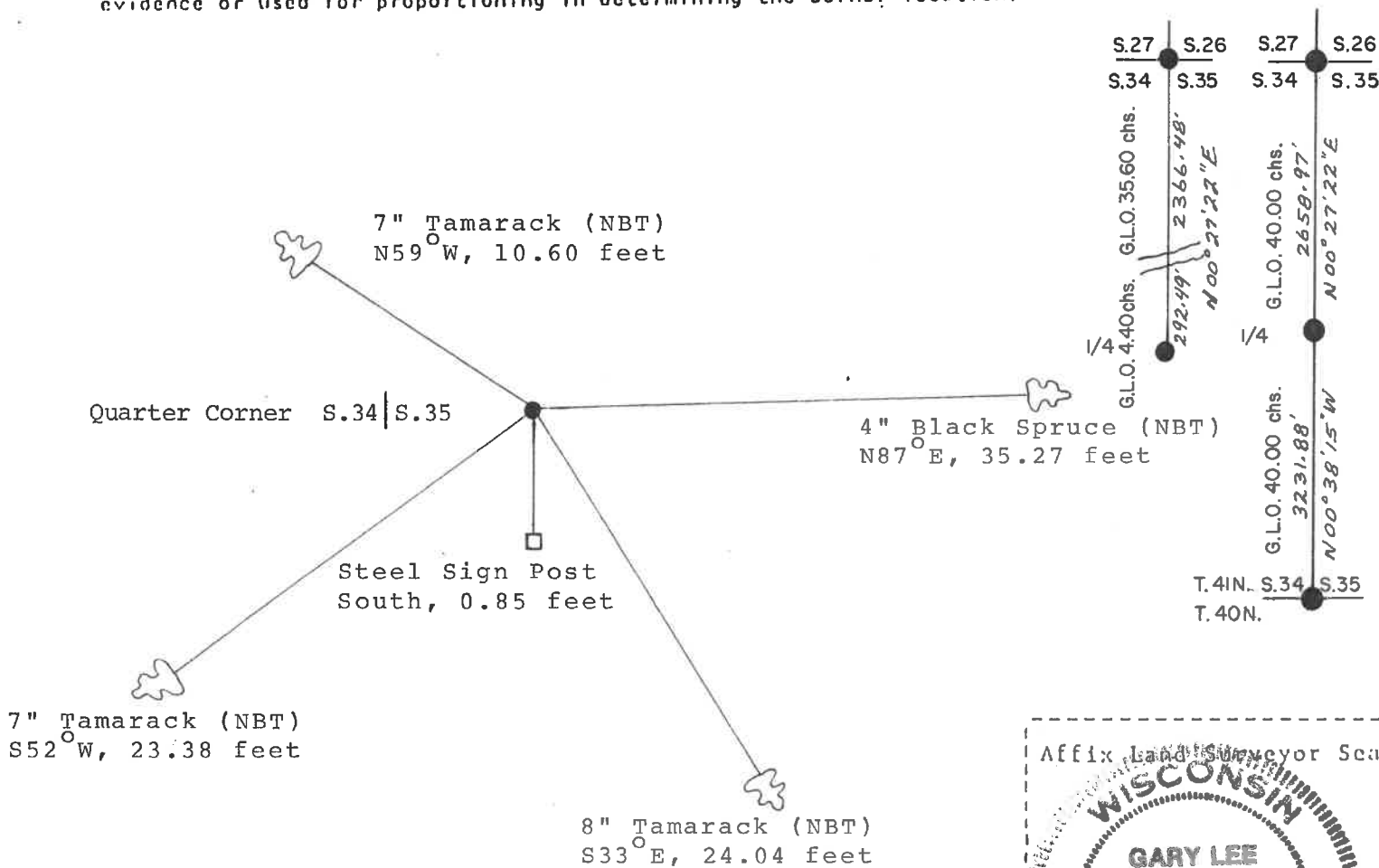
e) Describe any material discrepancy between the location of the corner as restored or reestablished and the location of that corner as previously restored or reestablished by distance and direction. Show the discrepancy on the plan view drawing under (d), above. Show the distances between the corner as previously restored or reestablished and (1) the corner as restored or reestablished, and (2) to at least 2 of the witness monuments shown on the drawing in (d), above.

See drawing below.

(f) Was the corner restored through acceptance of (1) an obliterated evidence location, or, (2) a found perpetuated location?

Restored through lost corner proportionate methods.

(g&h) Was the corner reestablished through lost corner proportionate methods? If so, show the method, including the directions and distances to other public land survey corners used as evidence or used for proportioning in determining the corner location?



(i) I, Gary L. Pisoni
(Type or print name) certify that the corner location shown on this record was determined by me or under my direction and control and that this U.S. Public Land Survey Monument Record is correct and complete to the best of my knowledge and belief.



Gary L. Pisoni March 13th 1992
Signature Date

Survey requested by: [Signature] 10/2/92
District Ranger Date