

U.S. PUBLIC LAND SURVEY MONUMENT RECORD

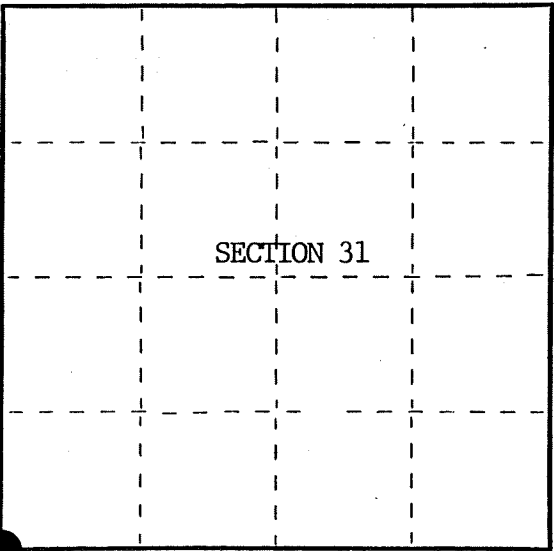
Index No. Z-1

State of Wisconsin }  
County of Florence } ss.

I, William B. Cochran, do hereby  
certify that on the 23rd day  
of August, 19 84, I found  
evidence of the Southwest Standard Section  
corner of Section 31  
Township 41 North, Range  
15 East, Fourth Principal Meridian,  
as described hereon; and that from this evidence  
I established a new monument and accessories  
as described hereon to perpetuate the original  
location of this corner.

Resident witnesses:

Tony Tillman



○ = Corner monument restored.

History of original corner establishment:

Original Government Survey in 1858 by Artemas Curtis. Dependent Resurvey in 1945 by  
Hugh Crawford. East on the South side of Section 36, 79.48 chains, set a 6" diameter  
concrete monument, 2 feet long, 1½ feet in the ground, with a brass cap mkd; S.C., T41N,  
R14E, R15E, S36, S31, 1945. From which the following bear;

Poplar	5"	N21°00'E	21 lks.
Poplar	6"	N31°30'W	20 lks.

Description of corner evidence found:

Monument as described and in place.

Description of monument and accessories I established to perpetuate the original location of this corner.

Blazed and scribed the following new bearing trees;

Spruce	12"	N88°E	37.40 feet
Spruce	7"	N32°W	24.83 feet
Steel Sign Post		NW	0.50 feet

Dated at Hiles, Wis., this 23rd day of December, 19 85.

Signature William B. Cochran Title Land Surveyor Registration No. S-1107  
(County Surveyor, Registered Land Surveyor, or other duly authorized official)

Office of Register of Deeds, County of, I hereby certify that the within  
instrument was filed in this office for record on the day of 19  
at o'clock M.

(Register of Deeds)

By Deputy

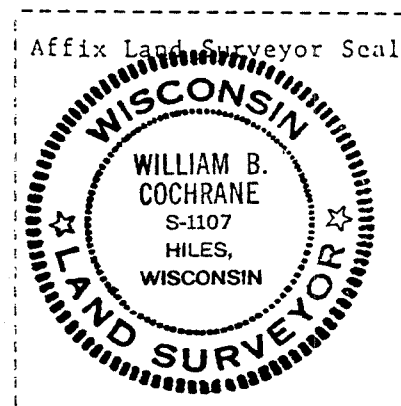
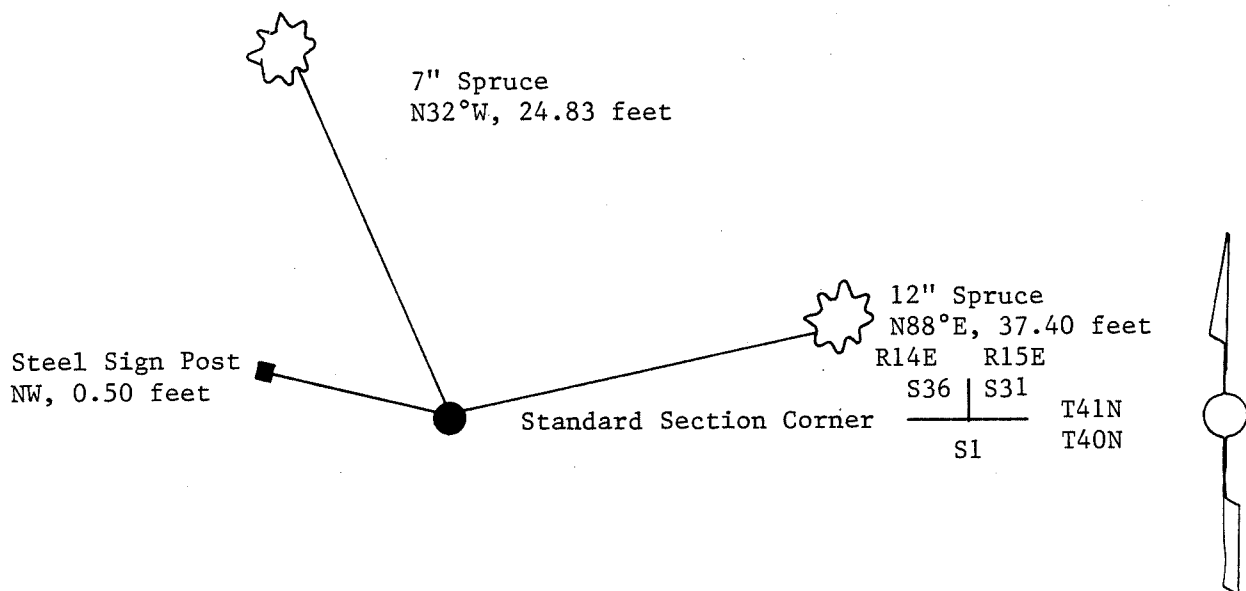
(e) Describe any material discrepancy between the location of the corner as restored or reestablished and the location of that corner as previously restored or reestablished by distance and direction. Show the discrepancy on the plan view drawing under (d), above. Show the distances between the corner as previously restored or reestablished and (1) the corner as restored or reestablished, and (2) to at least 2 of the witness monuments shown on the drawing in (d), above.

See drawing below.

(f) Was the corner restored through acceptance of (1) an obliterated evidence location, or, (2) a found perpetuated location?

Restored through acceptance of a found perpetuated location.

(g&h) Was the corner reestablished through lost corner proportionate methods? If so, show the method, including the directions and distances to other public land survey corners used as evidence or used for proportioning in determining the corner location?



(i) I, William B. Cochrane  
(type or print name) certify that the corner location shown on this record was determined by me or under my direction and control and that this U.S. Public Land Survey Monument Record is correct and complete to the best of my knowledge and belief.

William B. Cochrane October 8, 1986  
Signature Date

Certificate ready for filing:

[Signature]  
District Ranger

3-9-87  
Date

# U.S. PUBLIC LAND SURVEY MONUMENT RECORD

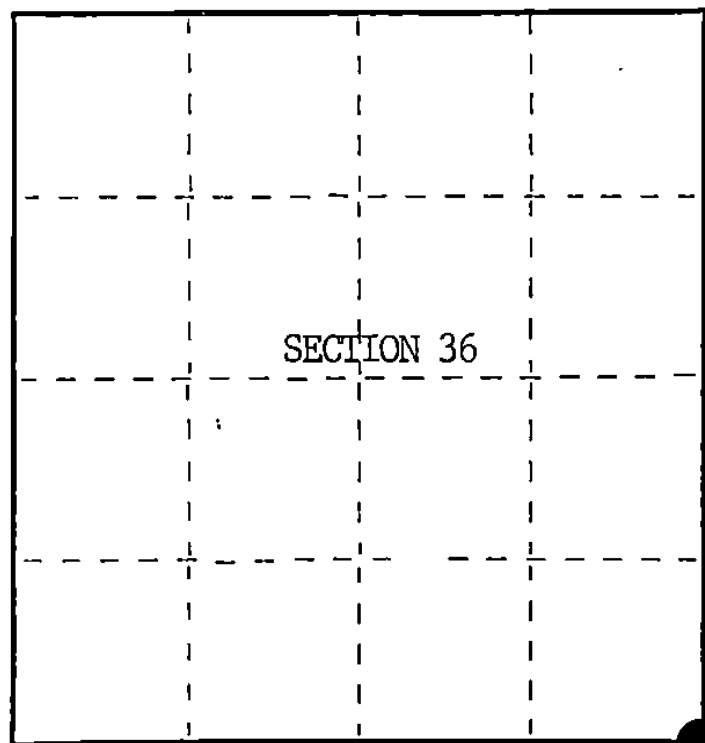
Index No. Z-25

State of Wisconsin }  
County of Forest } ss.

I William B. Cochrane, do hereby  
certify that on the 23rd day  
of August, 1984, I found  
evidence of the Southeast Standard Section  
corner of Section 36  
Township 41, North, Range  
14 East, Fourth Principal Meridian,  
as described hereon; and that from this evidence  
I established a new monument and accessories  
as described hereon to perpetuate the original  
location of this corner.

Resident witnesses:

Tony Tillman



○ = Corner monument restored.

History of original corner establishment:

Original Government Survey in 1858 by Artemas Curtis. Dependent Resurvey in 1945 by  
Hugh Crawford. East on the South side of Section 36, 79.48 chains, set a 6" diameter  
concrete monument, 2 feet long, 1½ feet in the ground, with a brass cap mkd; S.C., T41N,  
R14E, R15E, S36, S31, 1945. From which the following bear;

Poplar	5"	N21°00'E	21 lks.
Poplar	6"	N31°30"W	20 lks.

Description of corner evidence found:

Monument as described and in place.

Description of monument and accessories I established to perpetuate the original location of this corner.

Blazed and scribed the following new bearing trees;

Spruce	12"	N88°E	37.40 feet
Spruce	7"	N32°W	24.83 feet
Steel Sign Post		NW	0.50 feet

Dated at Hiles, Wis., this 23rd day of December, 1985.

Signature William B. Cochrane Title Land Surveyor Registration No. S-1107  
(County Surveyor, Registered Land Surveyor, or other duly authorized official)

Office of Register of Deeds, County of Forest, I hereby certify that the within  
instrument was filed in this office for record on the 11th day of March, 1987.  
at 3:30 o'clock P. M.

Paul Aschenbrenner  
(Register of Deeds)

By \_\_\_\_\_ Deputy

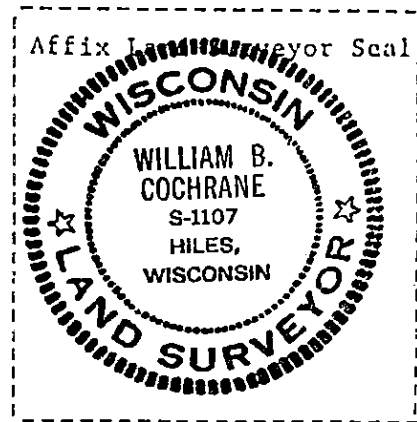
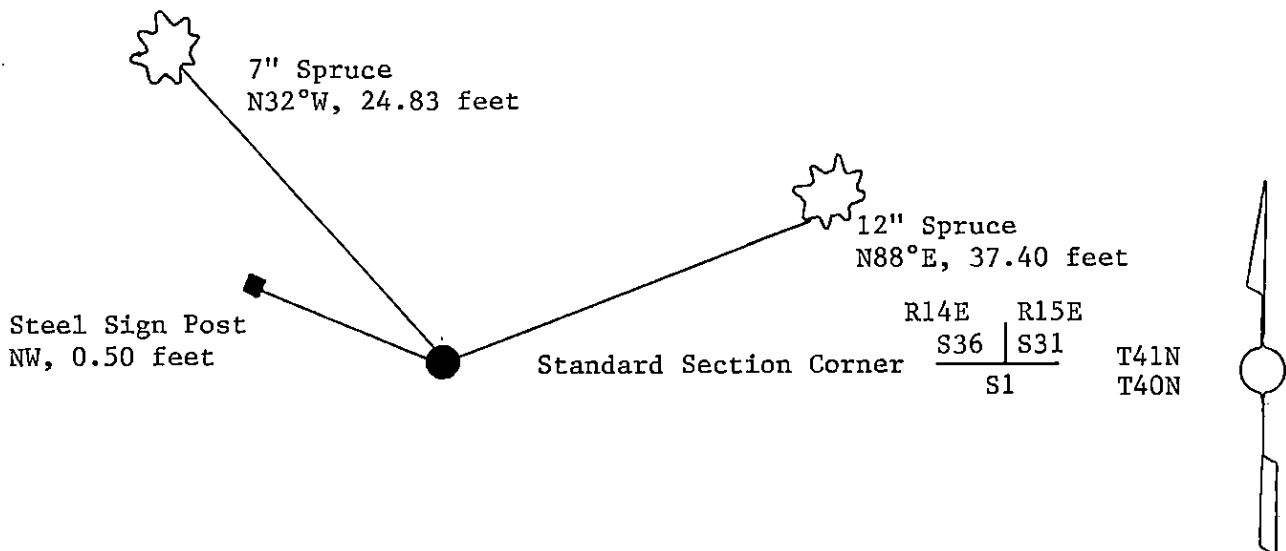
(e) Describe any material discrepancy between the location of the corner as restored or reestablished and the location of that corner as previously restored or reestablished by distance and direction. Show the discrepancy on the plan view drawing under (d), above. Show the distances between the corner as previously restored or reestablished and (1) the corner as restored or reestablished, and (2) to at least 2 of the witness monuments shown on the drawing in (d), above.

See drawing below.

(f) Was the corner restored through acceptance of (1) an obliterated evidence location, or, (2) a found perpetuated location?

Restored through acceptance of a found perpetuated location.

(g&h) Was the corner reestablished through lost corner proportionate methods? If so, show the method, including the directions and distances to other public land survey corners used as evidence or used for proportioning in determining the corner location?



(i) I, William B. Cochrane  
(type or print name) certify that the corner location shown on this record was determined by me or under my direction and control and that this U.S. Public Land Survey Monument Record is correct and complete to the best of my knowledge and belief.

William B. Cochrane October 8, 1986  
Signature Date

Certificate ready for filing: [Signature] 3-9-87  
District Ranger Date