

FILED ON:
06/06/2025 03:26 PM
CORTNEY BRITTEN CLEEREMAN
REGISTER OF DEEDS
FOREST COUNTY WI
PAGES: 1

U.S. PUBLIC LAND SURVEY
MONUMENT RECORD

NOTE: This form is intended and designed to fulfill all requirements of Wisconsin Administrative Code, Chapter A-E 7.08 U.S. Public Land Survey Monument Record (3) (a-i)

A-E 7.08(3)(a) Identity of corner:
East 1/4 Corner Section 36,
Township 41 North, Range 14 East
of the Fourth Principal Meridian,
Town of Alvin, Forest County,
Wisconsin

WISCRS - FOREST COUNTY
N: 723,420.402 USft (XXX,XXX.XXX)
E: 892,082.040 USft (XXX,XXX.XXX)
Datum: NAD83 (2011)
GNSS Method RTK
GNSS Control WISCRS VRS

The coordinate value shown has been verified by the average of two or more GPS observations at a markedly different time. Coordinates shown in parenthesis are previously published values.

A-E 7.08(3)(b)

Original Surveyor: William E. Daugherty - October 20, 1864 to October 24, 1864
Cedar 12 - S 24° W, 19 Links, Cedar 8 - N 62° E, 17 Links

THENCE:

April 30 & May 22, 2025 - In performing the 2024 - Forest County - "PLSS Corner Remonumentation and GPS Services" project, I searched for evidence of the original corner location. I found a creek ±6.5 feet (10 links) wide running north east. I also found a swamp edge bearing east - west (NE SW). The Original Government survey notes state the 1/4 section post was set 231' (3.5 chains) north of the creek, and 264' (4 chains) south of the swamp edge. I did not find any other evidence.

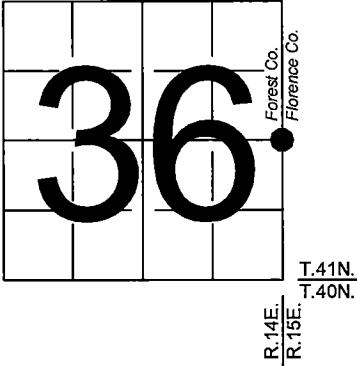
A calculated single proportion position, midway between the SE and the NE corners of Section 36. This position landed ±260' north of the creek center line, and ±170' south of the swamp edge.

Because the creek banks are well defined, and the description matched that of the 1864 field notes, I used it as the best available evidence of the corner location.

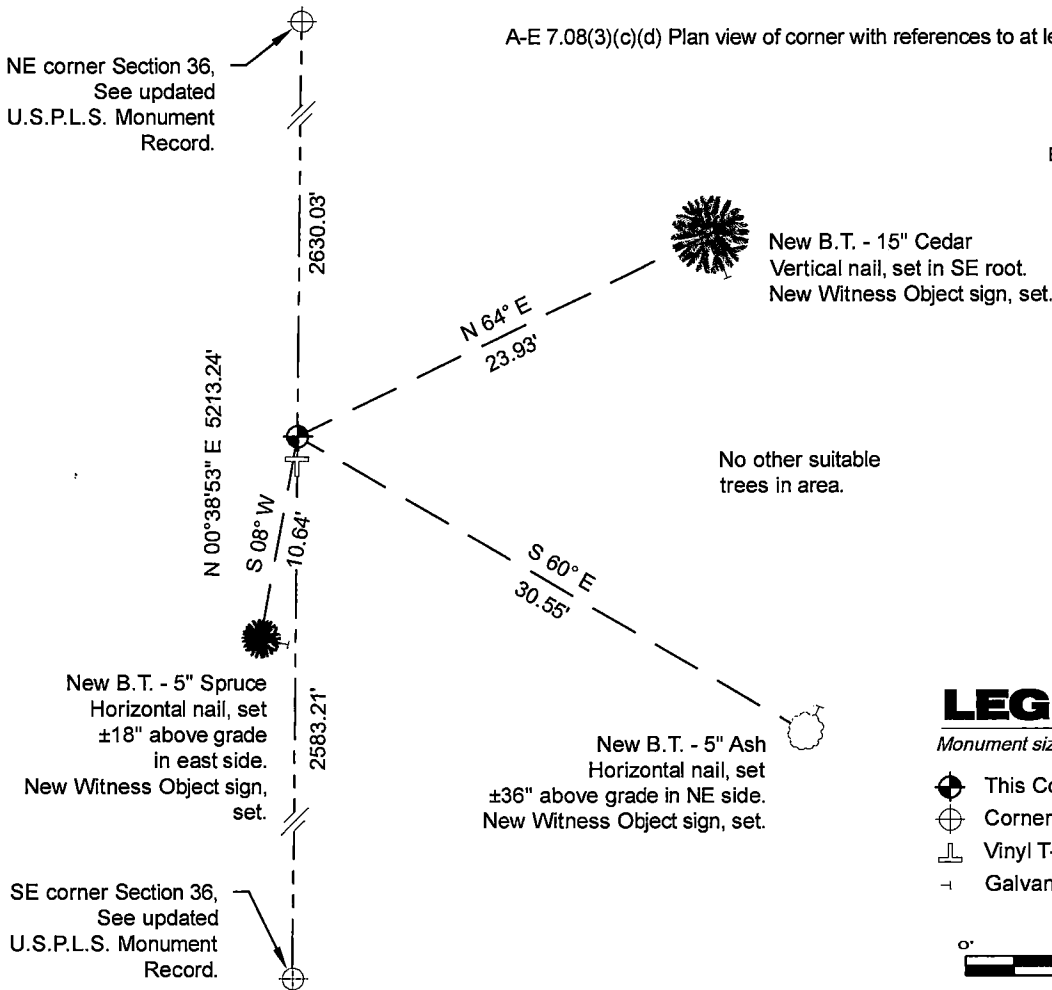
At a point 231 north of the Huff Creek centerline, and on a line between the existing SE and the NE corners of Section 36, I set a 1" diameter X 32.5" long drivable, Forest County aluminum pipe with a 3.25" diameter aluminum cap stamped to identify the corner.

The monument is cedar / spruce marsh, ±370' south of a Forest Service road that runs NE-SW.

I established 3 new reference monuments as shown below.



A-E 7.08(3)(c)(d) Plan view of corner with references to at least 4 witness monuments.

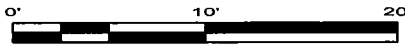


Bearings listed to the nearest second are referenced to the: Wisconsin County Coordinate Reference System, FOREST County Zone. All other bearings are magnetic.

LEGEND

Monument sizes = outside diameter measurements.

- This Corner
- Corner as noted
- Vinyl T-post, set ±1.0 foot south of corner
- Galvanized nail, set or nail found as shown



A-E 7.08(3)(e) 1864 Surveyor set a post 3.5 chains north of a creek that was 10 links wide and running north east. In 2024, I set a 1" diameter X 32.5" long drivable, Forest County aluminum pipe with a 3.25" diameter aluminum cap stamped to identify the corner, 231' north of a creek with the same description.

A-E 7.08(3)(f) I accept this position in good faith as a FOUND PERPETUATED LOCATION of the corner.

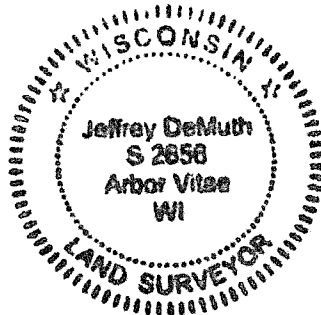
A-E 7.08(3)(g)(h) This corner was not determined through lost-corner-proportionate methods.

A-E 7.08(3)(i) I, Jeffrey L. DeMuth, Professional Land Surveyor No. S-2656, hereby certify that the corner location on this record was determined by me or under my direction and control, and that this U.S. Public Land Survey Monument Record is correct and complete to the best of my knowledge, and belief.

SIGNATURE

May 28, 2025

DATE



44114362000

44114362000

X25