

JAN 16 2019

Time: 8:30 A.M.
Vol: Corner Restoration
Page Number: J-K5

U.S. PUBLIC LAND SURVEY MONUMENT RECORD

Corner was: (check all that apply)
 Restored through acceptance of an obliterated evidence location
 Restored through acceptance of a found perpetuated location
 Determined to be lost and reestablished through proportionate methods.
(Show bearings and distances to PLSS corners used for proportioning)
 Restored/recovered/reestablished in a location that differs from a previously established position. (Show difference in plan view below.)
 Check here if additional information is shown on the reverse side of this form

Describe record evidence, recovered physical evidence, occupational evidence, testimonial evidence and all other evidence considered in the recovery/restoration of corner.

1865 - Original Corner established by James L. Nowlin
Original BTS: SPRUCE 8" N46°E 10 LINKS
BIRCH 10" N65°W 4 LINKS

1960 - Phil Hansen located corner on retracement of north line from N1/4 Section 18 onto lake at 2640 feet and from N1/4 Section 17 onto lake, corner in lake established mid point between two stakes. Then running North from W 1/4 Section 17 to midpoint in lake, established MC at 2111.60 feet North of W 1/4 corner.
At MC Corner between Sections 17 and 18 tied two BTS and one accessory.
BTS: ELM 26" NE 11.55 FEET
ELM 7" WEST 13/3 FEET
Accessory

WEST EDGE OF EAST CONCRETE WING OF DAM 86.5 FEET EAST.

2019 - Dean A. Williams, James Gardner traversed North from W 1/4 Section 17 through N 1/16 Corner, Sections 17 and 18 at 1322 feet, continued North record 789.60 feet, and used remaining accessory Dam at 85.5 feet east.
Accepted as best possible evidence of corner location.

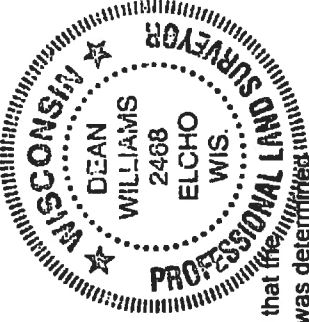
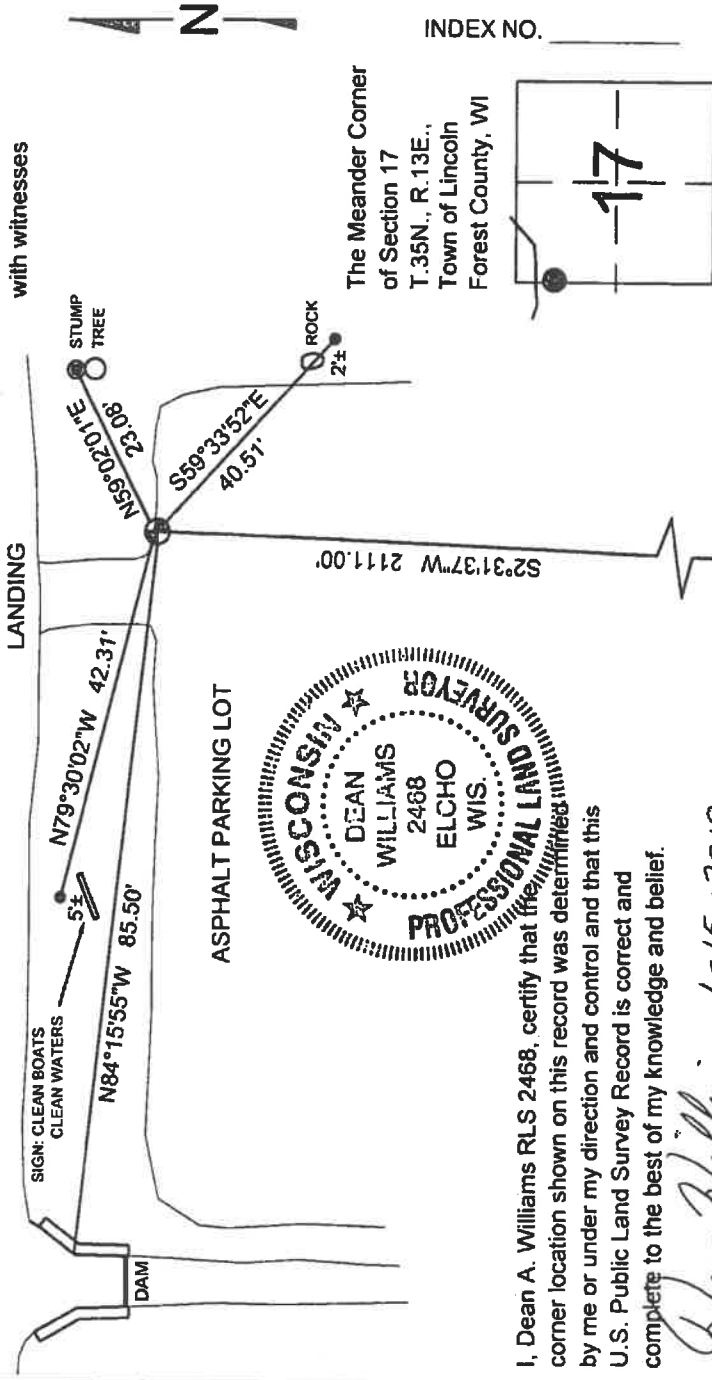
Physical description of the monument set:

2019 - Dean A. Williams Set 1" x 4" survey spike in edge of asphalt parking lot for county park by lake landing.

Describe the accessories used to perpetuate the location of the corner. Include a plan view drawing and indicate accessories found/set. Describe measuring point on bearing trees. Show any topographic features that would aid in future recovery of the corner.

LEGEND

- ⊕ SET 1" x 4" survey spike
- SET .50" x 24 I.R. with witnesses



I, Dean A. Williams RLS 2468, certify that the corner location shown on this record was determined by me or under my direction and control and that this U.S. Public Land Survey Record is correct and complete to the best of my knowledge and belief.

Dean Williams
Signature Date 1-15-2019

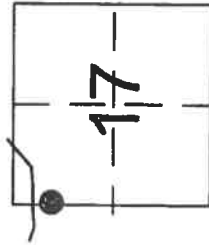
FOUND SURVEY SPIKE ⊕ W 1/4 17-35-13

BEARINGS REFERENCED AS SHOWN

4350183700

J-K 5

INDEX NO. _____



⊕ = Location of corner

1/5/2019 scanned to register correct recording date 1/16/19 - CBE/ROD

227123

FOREST COUNTY, WI
CORTNEY BRITTEN CLEEREMAN
REGISTER OF DEEDS
RECEIVED FOR RECORD

JAN 22 2019

Time: 11:45 A.M.
Vol.: Corner Restoration
Page Number: 1-21

U.S. PUBLIC LAND SURVEY MONUMENT RECORD

(Prepared and as required by S. A-E 7.08 WI Administrative Code)

The EAST 1/4 corner of Section 2, T. 36 N., R. 13 E., Forest County, WI
Corner was (check all that apply)

- Restored through acceptance of an obliterated evidence location.
- Restored through acceptance of a found perpetuated location.
- Determined to be lost and re-established through proportionate methods. (show bearings and distances to PLSS corners used for proportioning.)
- Restored/recovered/re-established in a location that differs from a previously established position. (Show difference in plan view below.)
- Check here if additional information is shown on the reverse side of this form.

Describe record evidence, recovered physical evidence, occupational evidence, testimonial evidence, and all other evidence considered in the recovery/restoration of the corner.

1865 - J.L. Nowlin set original 1/4 section post; Hemlock 12", N10°W, 15 links
Hemlock 20", N17°E, 22 links.

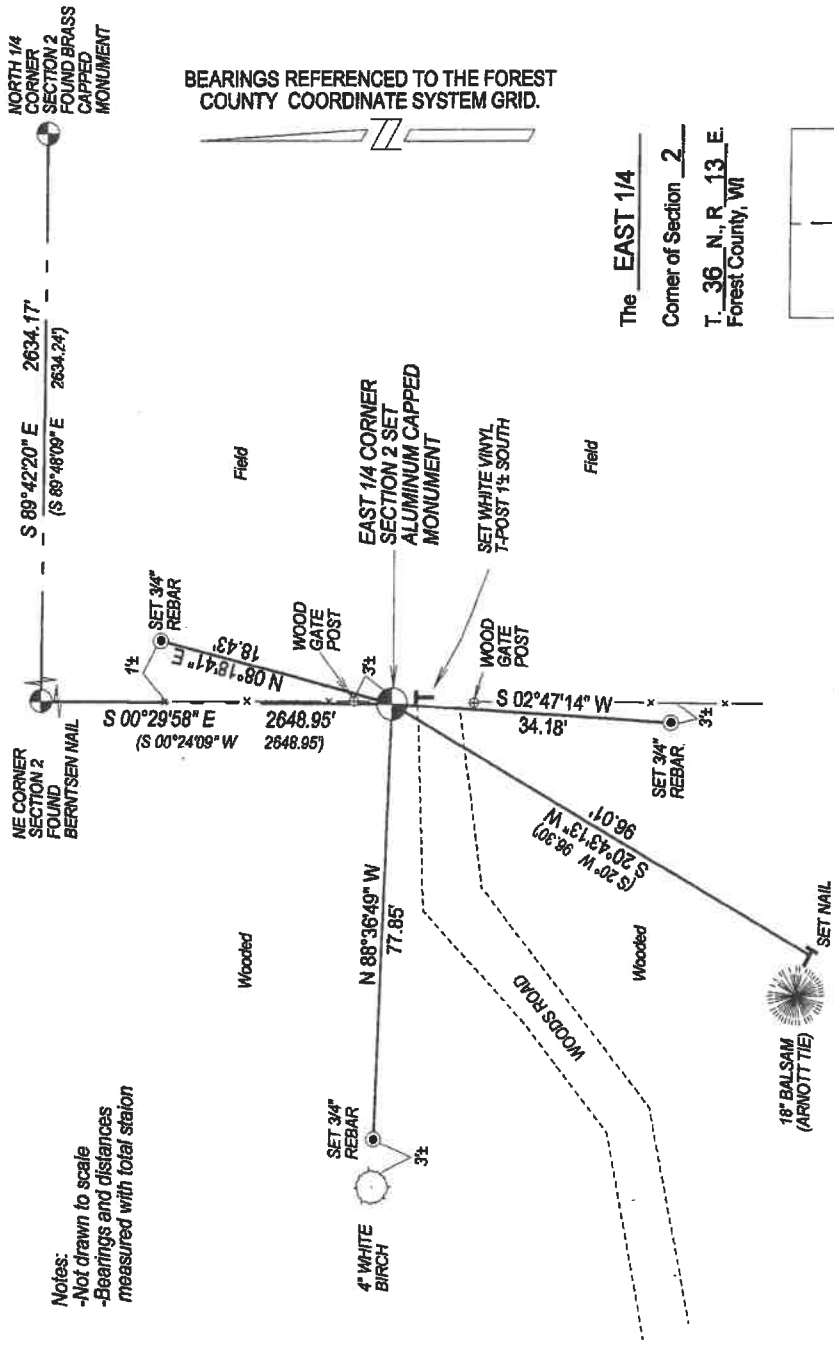
1938 - C.E. Walker set 2" x 5' long iron pipe with brass cap.

1975 - T. Amott found monument set by Walker, references a new tie; Balsam 8", S20°W, 96.30 feet, and filed a tie sheet.
2019 - I found the bottom portion of the 2" monument set by Walker lying prone. I found the existing tie referenced by Amott in 1975 in good condition. Using Amott's tie, and bearings and distances referenced in Certified Survey Map Volume 4 Page 35 located in Section 1, I set an Aluminum Capped Forest County Monument at the Corner location.

Physical description of the monument set:

I set a 2.375" x 30" aluminum capped monument 2" above surface as the corner, and tied it out as follows.

Describe the accessories used to perpetuate the location of the corner. Include a plan view drawing and indicate accessories found/set. Describe measuring point on bearing trees. Show any topographic features that would aid in future recovery of the corner.



Notes:
-Not drawn to scale
-Bearings and distances measured with total station

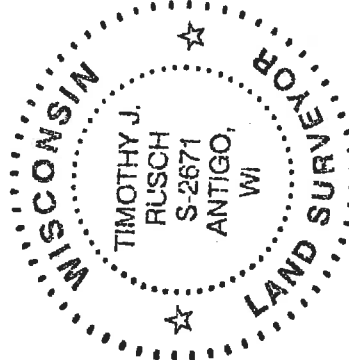
BEARINGS REFERENCED TO THE FOREST COUNTY COORDINATE SYSTEM GRID.

The EAST 1/4
Corner of Section 2
T. 36 N., R. 13 E.
Forest County, WI



● = Location of corner

INDEX No. **C-21**



I, Timothy J. Rusch certify that the corner location shown on this record was determined by me or under my direction and control and that this U.S. Public Land Survey Monument Record is correct and complete to the best of my knowledge and belief.

Timothy J. Rusch
Signature
01-14-2019
Date

1/5/23 re-scanned to reflect correct recording date 1/22/19 - CEC/REP.

43613022000

227286

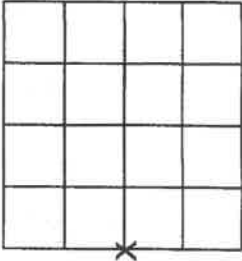
U.S. PUBLIC LAND SURVEY MONUMENT RECORD

Note: This form is intended and designed to fulfill all requirements of Wisconsin Administrative Code, Chapter A-E 7.08 U.S. Public Land Survey Monument Record (3)(a)(b)(c)(d)(e)(f)(g)(h)(i). An additional sheet may be added to if necessary to conform with said requirements.

11

(a) Corner Location: Township 36 North Range 14 East or West

Town of Laona County, Wisconsin



Section 34

(b)(f)(g)(h) Description of monument found at this corner and if it was accepted, state all evidence (material, testimonial, occupational, plats, records, other monuments) used as a basis for accepting. If not accepted or if nothing was found, state evidence used as basis for establishing location. If reestablishment through lost corner proportionate methods, indicate all monuments, distances and directions used to establish. Indicate type of monument found or set and sign post.

No evidence of original corner was found. Set corner using the NW and SW corners of section 34. NW corner from ties on file and SW corner from iron pipe found. Set 3/4 inch rebar at midpoint betwe section corners. Corner location matches the cutting lines east and west.

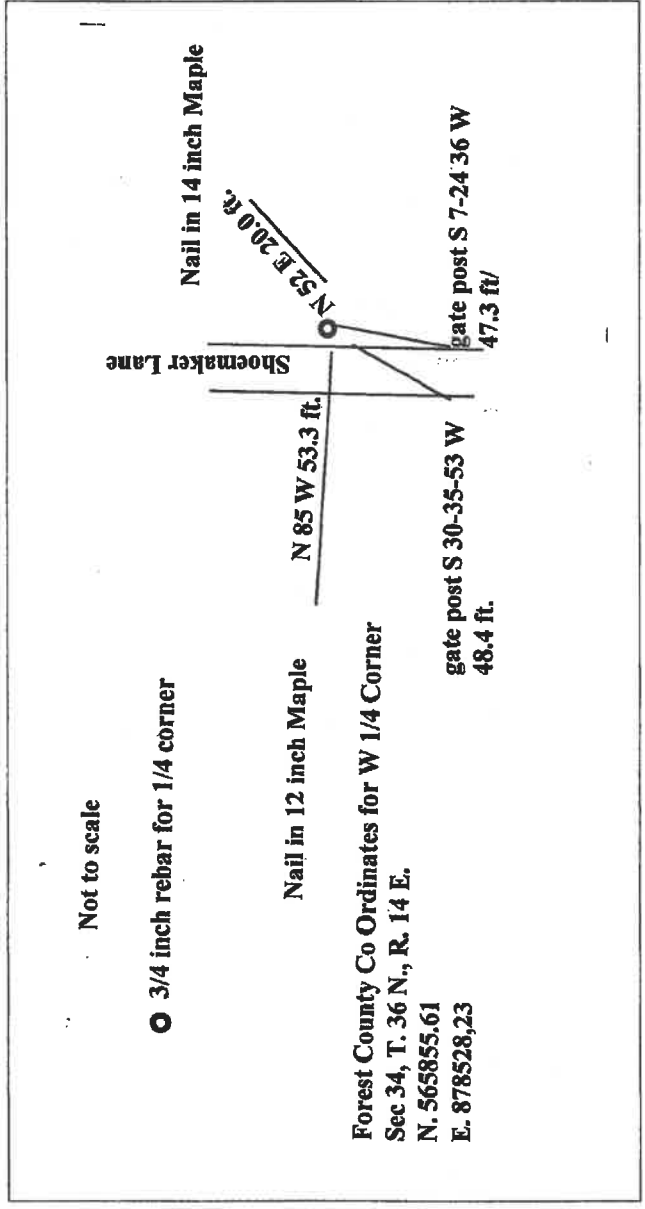
FOREST COUNTY, WI
CORTNEY BRITTEN CLEEREMAN
REGISTER OF DEEDS
RECEIVED FOR RECORD

FEB 26 2019

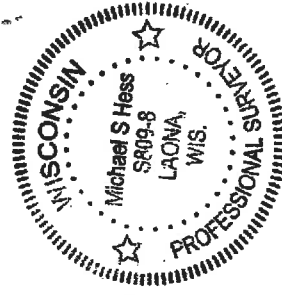
Time: 10:30 A.M.
Vol.: Corner Registration
Page Number: X-13

1/5/23 re-scanned to reflect correct recording date 2/19/19 - CBL/REP

(c)(d)(e) Plan view of corner with ties to at least 4 witness monuments. If in disagreement with previously established corner, show the distances between the two corners and also indicate the ties to the disputed corner.



Index No.



(i) I, Michael Hess, Professional Land Surveyor #S- 809 hereby certify that the corner location on this record was determined by me or under my direction and control and that this U.S. Public Land Survey Monument Record is correct and complete to the best of my knowledge and belief.

Michael Hess 2/19/19

Date

Signature

43614332000

X-13

227287

FOREST COUNTY, WI
CORTNEY BRITTEN CLEEREMAN
REGISTER OF DEEDS
RECEIVED FOR RECORD

FEB 26 2019

Time: 1:00 P.M.
Vol.: Corner Restoration
Page Number: 2-11

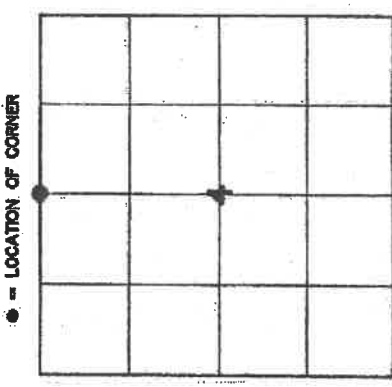
4351233 0020 2018

U.S. PUBLIC LAND SURVEY MONUMENT RECORD

HISTORY OF ORIGINAL CORNER ESTABLISHMENT AND SUBSEQUENT RESTORATION AND DESCRIPTION OF ANY RECORD, MONUMENT OCCUPATIONAL, TESTIMONIAL OR OTHER EVIDENCE CONSIDERED:

THE ORIGINAL CORNER WAS SET BY MILLARD IN 1857 WITH THE ORIGINAL BEARING TREES OF:

- 10" TAMRACK - N35°W 2 LINKS
- 8" TAMRACK - S30°E 6 LINKS
- 1907 - BROOKS RAN THE N-S 1/4 LINE ADDED 2 TIES OF 11" WHITE PINE N82.5°W 27 LINKS & 13" WHITE PINE S38°E 1.3 LINKS HIS 1/4 LINE DISTANCE WAS 81.41 CHAINS
- 1932 - HUTCHINSON SET AN ADDITIONAL TIE OF CEDAR TREE S52°W 26 LINKS
- 1930 - GW BORTH THEY SET ADDITIONAL TIES OF 10" TAMRACK STUMP S55°E 16 FEET AND 14" CEDAR S52.5°W 17 FEET. THEIR DISTANCES ACROSS THE NORTH LINE OF SECTION 4 WERE 2677 TO THE NW CORNER AND 2643.8 TO THE NE CORNER.
- 2008 - WE FOUND A FENCE CORNER INTERSECTION THAT WE USED AS THE LOCATION AND SET A 2" X 30" ALUMINUM CAP PIPE.

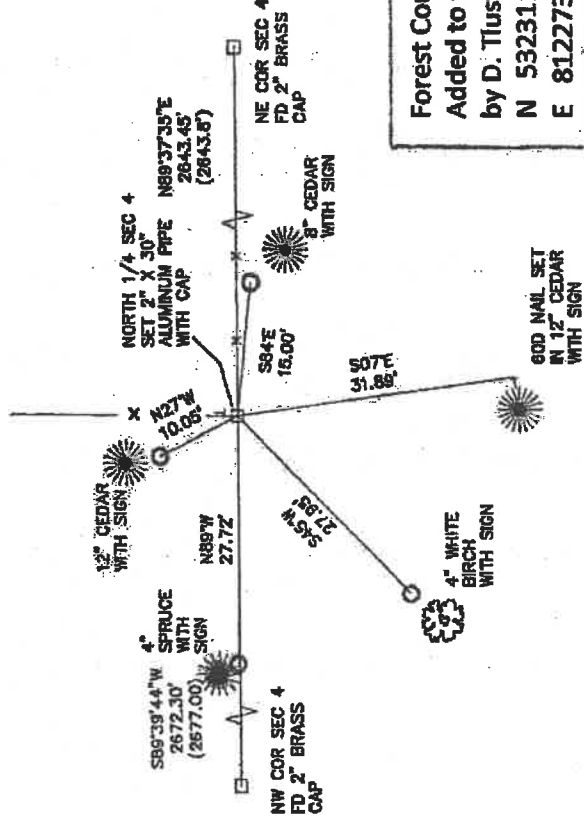


SECTION 4
TOWNSHIP 34 NORTH, RANGE 12 EAST
TOWN OF AINSWORTH
LANGLADE COUNTY, WISCONSIN

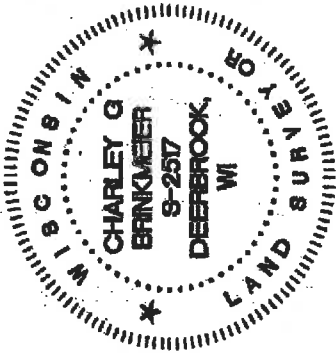
CORNER WAS: (CHECK ALL THAT APPLY)

- RESTORED THROUGH ACCEPTANCE OF AN OBLITERATED EVIDENCE LOCATION
- RESTORED THROUGH ACCEPTANCE OF A FOUND PERPETUATED LOCATION
- CONSIDERED A LOST CORNER AND REESTABLISHED THROUGH LOST CORNER PROPORTIONATE METHODS (INCLUDE A PLAN VIEW DRAWING SHOWING DISTANCES AND DIRECTIONS TO OTHER PUBLIC LAND SURVEY CORNERS USED FOR PROPORTIONING AND DETERMINING THE CORNER LOCATION)
- RESTORED OR REESTABLISHED IN A LOCATION THAT DIFFERS FROM A PREVIOUS RESTORATION OR REESTABLISHMENT (INCLUDE A PLAN VIEW DRAWING AND INDICATE WHAT WAS SET AND/OR FOUND)
- CHECK IF THERE IS ADDITIONAL INFORMATION ON BACK

DESCRIBE THE MONUMENT AND ACCESSORIES USED TO PERPETUATE THE LOCATION OF THE CORNER. (INCLUDE A PLAN VIEW DRAWING AND INDICATE WHAT WAS SET AND/OR FOUND) ALSO INCLUDE FOUR TIES TO THE SECTION CORNER AND DESCRIPTION OF THE TIES.



Forest County Coordinates NAD83(2011)
 Added to this tie sheet on 11/20/18
 by D. Tlusty
 N 532311.701
 E 812273.115



CHARLEY G. BRINKMEIER
 (Type or Print Name) CERTIFY THAT THE CORNER LOCATION SHOWN ON THIS RECORD WAS DETERMINED BY ME OR UNDER MY DIRECTION AND CONTROL AND THAT THIS U.S. PUBLIC LAND SURVEY MONUMENT RECORD IS CORRECT AND COMPLETE TO THE BEST OF MY KNOWLEDGE AND BELIEF.
 [Signature]
 SIGNATURE
 11-11-18
 DATE

43512330020

1/5/23 re-scanned to reflect correct recording date 2/26/19 - CRK/ROD.

SET 3/4" X 24" IRON PIPES
 AT ALL TIE LOCATIONS
 ALL TREES HAVE BEARING
 SIGNS
 BEARINGS REFERENCED TO
 THE LANGLADE COUNTY
 COORDINATE SYSTEM
 T- 6 FOOT WHITE VINYL
 POST SET
 COORDINATE DATUM NAD
 83(2011)
 N 458698.95
 E 660913.20

A-11 34-12 INDEX NO.

2-11