

CERTIFIED LAND CORNER RESTORATION

State of Wisconsin

County of Forest

ss.

I, Jean F. Resvick, do hereby certify that on the 25th day of May, 19 65, I found evidence of the Northwest section corner of Section 33 Township 41 North, Range 14 East, Fourth Principal Meridian, as described hereon; and that from this evidence I established a new monument and accessories as described hereon to perpetuate the original location of this corner:

Description of original monument and accessories and subsequent restorations:

North 80.00 chains between sections 32 & 33
Set wood post for section corner of sections 28, 29, 32 and 33
Sugar 10", N39°W, 15 lks.
Hemlock 8", S17°E, 13 lks.

U.S. Forest Service 874-9 form, dated 12/5/38, and signed by Alvin A. Snyder.

Found cedar post from which the follow bear:

1. 16 inch scribed hemlock stub bears S5° 15' E, 10 lks. dist.
2. 10 inch hemlock bears N87° 15' E, 21 lks. dist.
3. 18 inch elm bears N29°, 31 lks. dist.

Description of corner evidence found:

Louis W. Verch, State Land Commission Forester, showed us the location of this corner which he had marked with a cherry post in 1964.

Old cedar post and point found alongside of cherry post.

Hemlock stump remains bear S5° 15' E, 6.60 ft.

Hemlock stump bears N87° 15' E, 13.86 ft.

Elm stump bears N29°W, 20.46 ft.

Sugar stump bears N39°W, 9190 ft.

Description of monument and accessories I established to perpetuate the original location of this corner:

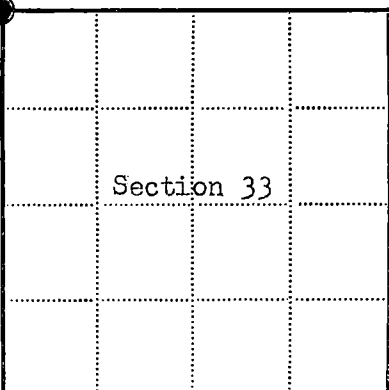
Replaced post with 2 inch inside diameter, galvanized wrought iron pipe, 5 feet long, filled with concrete, flanged at bottom with brass cap marked:

T41N R14E

S29	S28
S32	S33
1965	
S-802	

from which the following blazed and scribed new bearing trees bear:

1. Elm 3", N36°E, 60.50 ft. or 9167 lks.
2. Elm 4", S46°E, 32.06 ft. or 48.58 lks.
3. Sugar 11", N89°W, 29.51 ft. or 44.71 lks.



● = Corner monument restored

□ =

Resident witnesses Louis W. Verch, State Forester

Dated at Rhineland, Wisconsin, this 21st day of March, 19 67.

Signature Jean F. Resvick Title County Surveyor, Registered Land Surveyor, or other duly authorized official

Surveyors Registration No. S-802

DOCUMENT NO. 94240

Office of Register of Deeds County of Forest

I hereby certify that the within instrument was filed in this office for record on the 27th day of February, 19 68, and was filed in Book No. I Page No. of County Records.

Signature Eugene Stetson Title Register of Deeds

Township 41 North, Range 14 East, Section 33, Index No. V-9, Page No.



CERTIFIED LAND CORNER RESTORATION

State of Wisconsin

County of Forest

ss.

I, Jean F. Resvick, do hereby certify that on the 25th day of May, 19 65, I found evidence of the Northwest section corner of Section 33 Township 41 North, Range 14 East, Fourth Principal Meridian, as described hereon; and that from this evidence I established a new monument and accessories as described hereon to perpetuate the original location of this corner:

Description of original monument and accessories and subsequent restorations:

North 80.00 chains between sections 32 & 33
Set wood post for section corner of sections 28, 29, 32 and 33
Sugar 10", N39°W, 15 lks.
Hemlock 8", S17°E, 13 lks.

U.S. Forest Service 874-9 form, dated 12/5/38, and signed by Alvin A. Snyder.
Found cedar post from which the follow bear:

1. 16 inch scribed hemlock stub bears S5° 15'E, 10 lks. dist.
2. 10 inch hemlock bears N87° 15' E, 21 lks. dist.
3. 18 inch elm bears N29°, 31 lks. dist.

Description of corner evidence found:

Louis W. Verch, State Land Commission Forester, showed us the location of this corner which he had marked with a cherry post in 1964.
Old cedar post and point found alongside of cherry post.
Hemlock stump remains bear S5° 15'E, 6.60 ft.
Hemlock stump bears N87° 15' E, 13.86 ft.
Elm stump bears N29°W, 20.46 ft.
Sugar stump bears N39°W, 9190 ft.

Description of monument and accessories I established to perpetuate the original location of this corner:

Replaced post with 2 inch inside diameter, galvanized wrought iron pipe,
5 feet long, filled with concrete, flanged at bottom with brass cap marked:

Thin Blue

S29 S28
S32 S33
1965
3-202

from which the following blazed and scribed new bearing trees bear:

1. Elm 3", N36°E, 60.50 ft. or 9167 lks.
2. Elm 4", S46°E, 32.06 ft. or 48.58 lks.
3. Sugar 11", N89°W, 29.51 ft. or 44.71 lks.

Resident witnesses. Louis W. Verch, State Forester

Dated at Rhinelanders, Wisconsin, this 25th day of May, 19 65.

Signature Jean F. Resvick Title State Land Surveyor
(County Surveyor, Registered Land Surveyor, or other authorized official)

Surveyors Registration No. S-802DOCUMENT NO. 94240Office of Register of Deeds County of Forest

I hereby certify that the within instrument was filed in this office for record on the 27th day of February, 19 68, and was filed in Book No. I Page No. of County Records.

Signature Eugene Stetson Title Register of Deeds

Township 41 North, Range 14 East, Section 33, Index No. V-9, Page No.



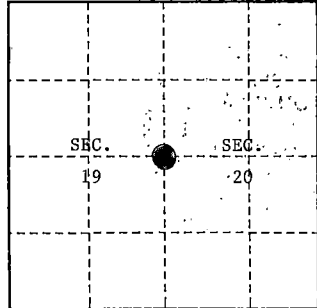
U. S. PUBLIC LAND SURVEY MONUMENT RECORD

INSTRUCTIONS:

This record shall show the location of the corner and shall include all of the following nine elements (a through i).

- (a) Identify the corner by reference to the U.S. public land survey system.
O = Corner monument restored.

One Quarter Corner common to Sections 19 and 20, T.41N., R.14E., Forest County Wisconsin.



- (b) Describe any record evidence, monument evidence, occupational evidence, testimonial evidence or any other material evidence you considered, and whether the monument was found or placed.

In 1865, William daugherty set 1/4 corner post and made the following references: Birch 8"5 28°E 18 lks (11.88 feet), Yellow Pine 10" N 84°W 23 lks (15.18 feet).

1963 Jean Resvick, R.L.S., restored corner in the intersection of a north-south road with a road running east as the best evidence of corners location. Made the following references: Power Pole #L-35-47-1920 S 16°W 75.57 feet; Power Pole #NT-40-N63-1844 N35°W 36.91 feet.

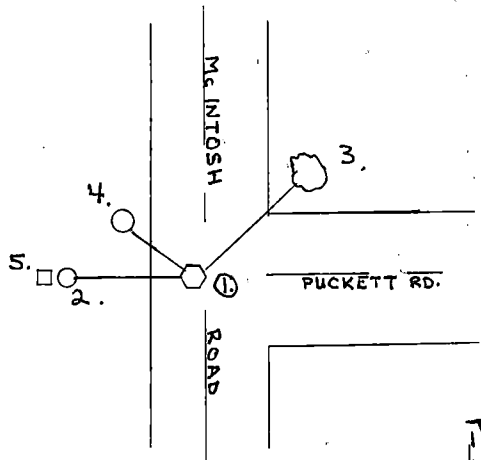
1998 Alan Harrison, R.L.S., found monument in road intersection, 1 foot below road surface. S.W. powere pole was removed. Set new references as below.

REGISTER'S OFFICE
Forest County, Wis.
Received for record this 24th day
of March A.D., 1999 at
1:15 o'clock P.M. and recorded
in Vol. CORNER RESTORATION
page P-5
Christi Edliger
Duty Register of Deeds

- (c) In the plan view drawing below, provide reference ties to at least 4 witness monuments, or, if the location is within a municipality, to at least 2 witness monuments. (Witness monuments shall be made of concrete, natural stone, iron or other equally durable material.)

- (d) Show a plan view drawing depicting the relevant monuments and reference ties which is sufficient in detail to enable accurate relocation of the corner monument if the corner monument is disturbed. Indicate north.

- 1) 6" Concrete Monument with Brass Cap
1 foot below road surface
- 2) Witness Corner 1" x 36" West 30.00 feet
- 3) Red Pine 14' N54°E 63.64 feet
- 4) Power Pole 40-N63-1844 N35°W 36.95 feet
- 5) Steel Sign Post 6' West 30.82 feet



44114 19 2000

(e) Describe any material discrepancy between the location of the corner as restored or reestablished and the location of that corner as previously restored or reestablished by distance and direction. Show the discrepancy on the plan view drawing under (d), above. Show the distances between the corner as previously restored or reestablished and (1) the corner as restored or reestablished, and (2) to at least 2 of the witness monuments shown on the drawing in (d), above.

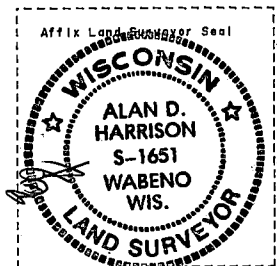
none

(f) Was the corner restored through acceptance of (1) an obliterated evidence location, or, (2) a found perpetuated location?

a perpetuated position

(g & h) Was the corner reestablished through lost corner proportionate methods? If so, show the method, including the directions and distances to other public land survey corners used as evidence or used for proportioning in determining the corner location?

no



(1) I, Alan D. Harrison

(type or print name) certify that the corner location shown on this record was determined by me or under my direction and control and that this U.S. Public Land Survey Monument Record is correct and complete to the best of my knowledge and belief.

Signature

Date

CERTIFICATE READY FOR FILING:

District Ranger

CERTIFIED LAND CORNER RESTORATION

State of Wisconsin

County of Forest

} ss.

I, Jean Resvick, do hereby certify that on the 8th day of September, 1970, I found evidence of the West quarter corner of Section 21 Township 41 North, Range 14 East, Fourth Principal Meridian, as described hereon; and that from this evidence I established a new monument and accessories as described hereon to perpetuate the original location of this corner:

Description of original monument and accessories and subsequent restorations:

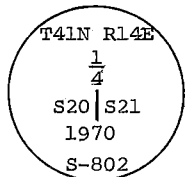
Surveyed in 1865 by William Daugherty
40 chains north between section 20 and 21, set post
Birch 16, N62E, 16 lks.
Birch 15, S84W, 20 lks.
Brule River, North, 11.84 chains.

Description of corner evidence found:

Squared cedar post in mound of rock bears S45E, 16.5 feet from a cedar with Forest Service location poster. Poster is dated 1936. Birch stump S84W, 6 feet from center of stump. This corner has been in place for nearly 40 years. I therefore accept the position as is as the best available evidence of the corner location.

Description of monument and accessories I established to perpetuate the original location of this corner:

Replaced squared stake with a 2 inch inside diameter, galvanized, wrought iron pipe, 5 feet long, filled with concrete, flanged on bottom with brass cap marked



from which the following blazed and scribed new bearing trees bear.

Sugar 5, N48E, 16.65 ft.
Yellow Birch 16, N87E, 29.41 ft.
Cedar 8, S39W, 15.65 ft.

Steel post with sign 1 foot SW of monument

44114 20 2000

Resident witnesses

Dated at Rhineland Wisconsin, this 11th day of September, 1970

Signature Jean F. Resvick Title County Surveyor
(County Surveyor, Registered Land Surveyor, or other duly authorized official)

Surveyors Registration No. S-802

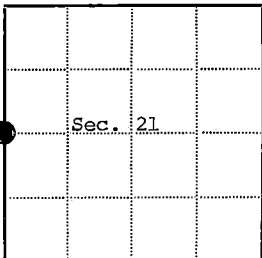
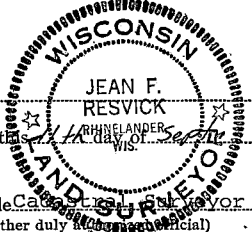
DOCUMENT No. 98925

Office of Register of Deeds County of Forest

I hereby certify that the within instrument was filed in this office for record on the 23rd day of October, 1970, and was filed in Book No. CORNER Page No. P-9 of County Records.

Signature Eugene Stutzman Title Register of Deeds

Township 41 North, Range 14 East, Section 21, Index No. P-9, Page No. 6



⊗ = Corner monument restored

□ =

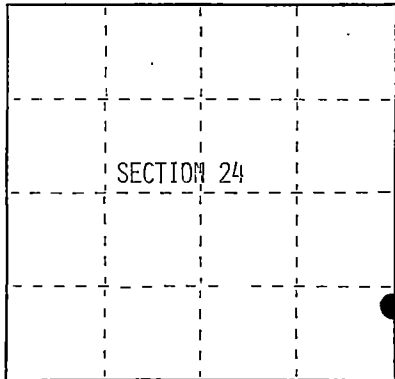
U.S. PUBLIC LAND SURVEY MONUMENT RECORD

Index No. Q,R-25

State of Wisconsin }
County of Forest } ss.

I, Gary L. Pisoni, do hereby
certify that on the 4th day
of September, 1991, I found
evidence of the Meander Corner
~~corner~~ between Sections 24 and 19
Township 41, North, Range
14 East, Fourth Principal Meridian,
as described hereon; and that from this evidence
I established a new monument and accessories
as described hereon to perpetuate the original
location of this corner.

Resident witnesses:



○ = Corner monument restored.

History of original corner establishment:

Original Government Survey in 1864 by William E. Daugherty. North between Sections 24 and 19, at 15.00 chains, set meander post, from which the following bear;
Cedar 10" N80°E 30 lks.
Cedar 10" S57°W 29 lks. •

Description of corner evidence found:

No original corner evidence was recovered.

I tried using the river ties to position the meander corner between Sections 24 and 19, but could not accurately determine the corner position. In order to re-establish the meander corner between Sections 24 and 19, I used the average mean bearing between Sections 25 and 30 and projected that bearing between Sections 24 and 19 to the South bank of the Brule River.

Description of monument and accessories I established to perpetuate the original location of this corner.

At the corner position, set a 2½ inch diameter aluminum pipe monument, 3 feet long, 3 inches above the ground, with an aluminum cap stamped; T41N, R14E, R15E, Meander Corner, S24, S19, 1992, S-1634, from which the following new blazed and scribed bearing trees bear; (measurements taken to a nail in side of tree)

Balsam	8"	East	16.81 feet
B. Cherry	7"	S73°E	22.49 feet
Balsam	6"	S54°W	11.32 feet
Steel Sign Post		South	0.8 feet

Monument is approximately 16 feet from river shoreline.

Dated at Iron River, MI, ~~xxx~~ this 16th day of February, 1992

Signature Gary L. Pisoni Title Land Surveyor Registration No. S-1634
(County Surveyor, Registered Land Surveyor, or other duly authorized official)

Office of Register of Deeds, County of Forest I hereby certify that the within instrument was filed in this office for record on the 12th day of August, 1992 at 1:25 o'clock P M.

(Register of Deeds)
By Paul Little Deputy

44114 240800

- See drawing below.

- Restored through lost corner proportionate methods.

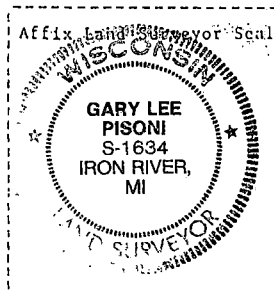
-

(i) 1. GARY L. Pisoni
(type or print name) certify that the corner location shown on this record was determined by me or under my direction and control and that this U.S. Public Land Survey Monument Record is correct and complete to the best of my knowledge and belief.

Gar
Signature

Gary L. Pisoni

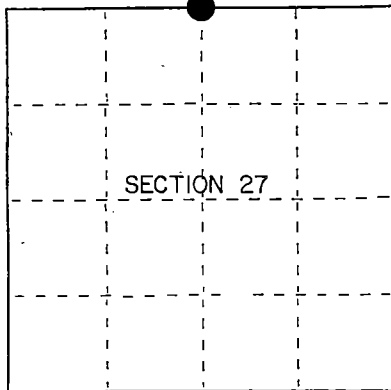
Date _____



State of Wisconsin }
County of Forest } ss.

I, Gary L. Pisoni, do hereby
certify that on the 16th day
of July, 1991, I found
evidence of the North Quarter
corner of Section 27
Township 41, North, Range
14 East, Fourth Principal Meridian,
as described hereon; and that from this evidence
I established a new monument and accessories
as described hereon to perpetuate the original
location of this corner.

Resident witnesses:



● = Corner monument restored.

History of original corner establishment:

Original Government Survey in 1865 by William E. Daugherty. West corrected between Sections 22 and 27, at 40.27 chs., set Quarter Section Post to Sections 22 and 27, from which the following bear;

Sugar	12"	N24°W	12 lks.
Elm	15"	S13°E	27 lks.

Description of corner evidence found:

No original corner evidence was recovered.

I restored the corner position at proportionate distance and on line between the Northwest and Northeast Section Corners of Section 27.

Description of monument and accessories I established to perpetuate the original location of this corner. At the corner position, set a 2½ inch diameter aluminum pipe monument, 3 feet long, 3 inches above the ground, with an aluminum cap stamped; T41N R14E, 1/4, S22, S27, 1991, S-1634. From which the following new blazed and scribed bearing trees bear; (measurements taken to a nail in side of tree)

S. Maple	10"	S84°E	16.06 feet
S. Maple	7"	S12°E	16.58 feet
S. Maple	9"	S65°W	11.48 feet
S. Maple	8"	N56°W	19.00 feet
Steel Sign, Post		N39°E	0.70 feet

Dated at Iron River, MI, this 16th day of February, 1992

Signature Gary L. Pisoni Title Land Surveyor Registration No. S-1634
(County Surveyor, Registered Land Surveyor, or other duly authorized official)

Office of Register of Deeds, County of Forest. I hereby certify that the within
instrument was filed in this office for record on the 10th day of March, 1993
at 10:45 o'clock A. M.

Paul Hechardreanner
(Register of Deeds)

By _____ Deputy

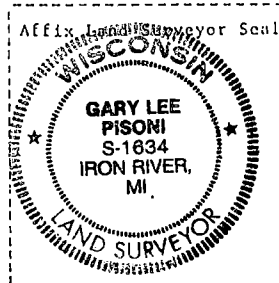
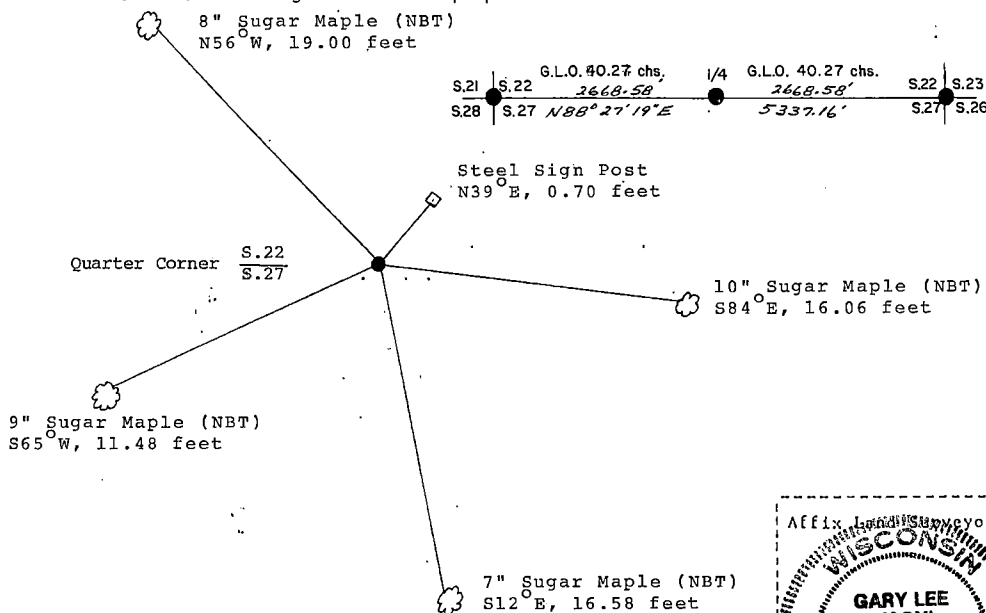
- (d) Describe any material discrepancy between the location of the corner as restored or reestablished and the location of that corner as previously restored or reestablished by distance and direction. Show the discrepancy on the plan view drawing under (d), above. Show the distances between the corner as previously restored or reestablished and (1) the corner as restored or reestablished, and (2) to at least 2 of the witness monuments shown on the drawing in (d), above.

See drawing below.

- (f) Was the corner restored through acceptance of (1) an obliterated evidence location, or, (2) a found perpetuated location?

Restored through lost corner proportionate methods.

- (g) Was the corner reestablished through lost corner proportionate methods? If so, show the method, including the directions and distances to other public land survey corners used as evidence or used for proportioning in determining the corner location?
Reestablished through lost corner proportionate methods.



- (i) 1. Gary L. Pisoni
(Type or print name) certify that the corner location shown on this record was determined by me or under my direction and control and that this U.S. Public Land Survey Monument Record is correct and complete to the best of my knowledge and belief.

Signature

Gary L. Pisoni

Date

March 13th 1992

Survey requested by;

Mike Carr
District Ranger

10/2/92
Date

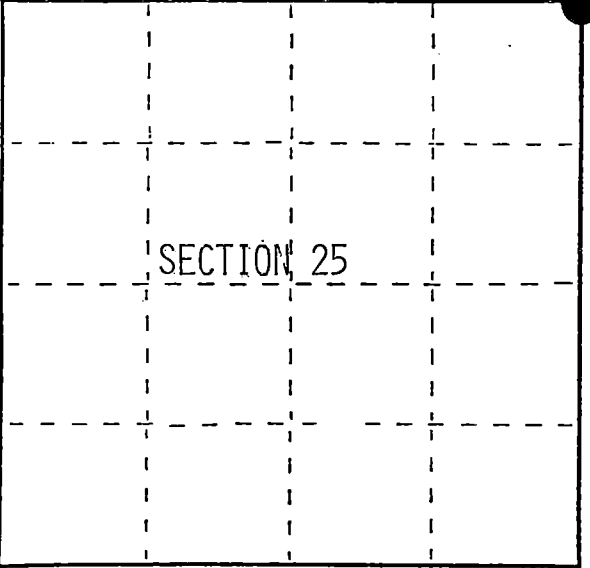
U.S. PUBLIC LAND SURVEY MONUMENT RECORD

Index No. R-25

State of Wisconsin }
County of Forest } ss.

I, Gary L. Pisoni, do hereby
certify that on the 4th day
of September, 1991, I found
evidence of the Northeast Section
corner of Section 25
Township 41, North, Range
14 East, Fourth Principal Meridian,
as described hereon; and that from this evidence
I established a new monument and accessories
as described hereon to perpetuate the original
location of this corner.

Resident witnesses:



○ = Corner monument restored.

History of original corner establishment:

Original Government Survey in 1864 by William E. Daugherty. North between Sections 25 and 30, at 80.00 chs., set Section Corner Post to Sections 19, 30, 24 and 25, from which the following bear;

Fir	8"	N51°E	30 lks.
Cedar	16"	N63°W	15 lks.
Cedar	12"	S46°W	41 lks.
Cedar	10"	S21°E	29 lks.

In 1974, Jean Resvick, a Land Surveyor with the Forest Service found an old white painted post and a 3/4" well pipe 0.50 feet East of the post.
Description of corner evidence found:

Found the post and well pipe as described by Jean Resvick.

I accept the pipe as the best available evidence for restoring the corner position.

Description of monument and accessories I established to perpetuate the original location of this corner.

In place of pipe, set a 2½ inch diameter aluminum pipe monument, 3 feet long, 3 inches above the ground, with an aluminum cap stamped; T41N, R14E, R15E, S19, S24, S25, S30, 1991, S-1634. From which the following new blazed and scribed bearing trees bear; (measurements taken to a nail in side of tree)

Balsam	3"	S74°E	10.01 feet
Balsam	8"	S55°W	30.03 feet
Spruce	8"	S87°W	40.82 feet
Balsam	7"	N48°W	7.66 feet
Steel Sign Post		North	0.67 feet

Dated at Iron River, MI, ~~Wis.~~, this 16th day of February, 1992

Signature Gary L. Pisoni Title Land Surveyor Registration No. S-1634
(County Surveyor, Registered Land Surveyor, or other duly authorized official)

Office of Register of Deeds, County of Forest, I hereby certify that the within instrument was filed in this office for record on the 12th day of August, 1993 at 1:25 o'clock P M.

(Register of Deeds)
By Shel Chittlo Deputy

44114 2400000

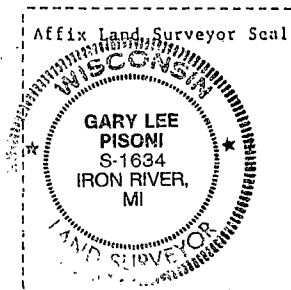
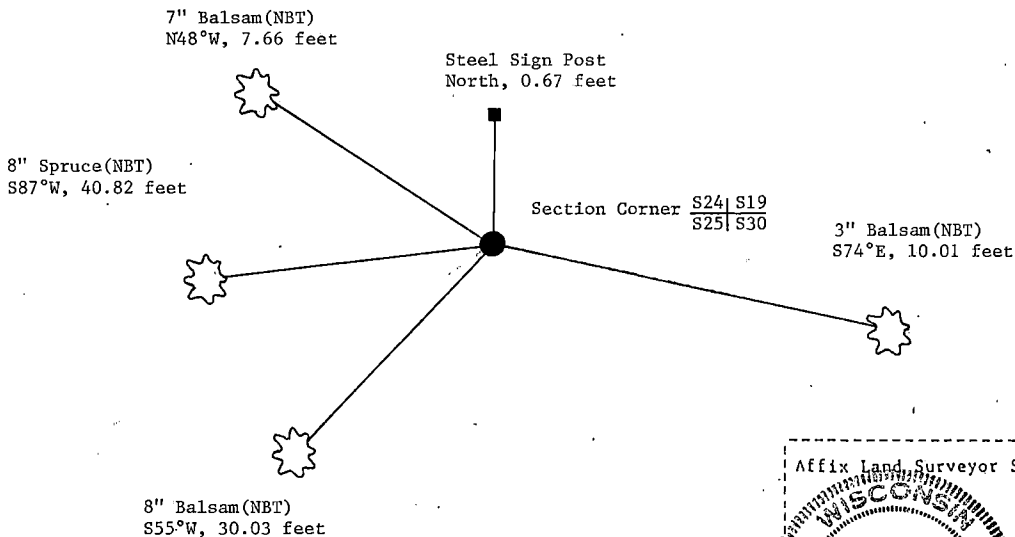
- (e) Describe any material discrepancy between the location of the corner as restored or reestablished and the location of that corner as previously restored or reestablished by distance and direction. Show the discrepancy on the plan view drawing under (d), above. Show the distances between the corner as previously restored or reestablished and (1) the corner as restored or reestablished, and (2) to at least 2 of the witness monuments shown on the drawing in (d), above.

See drawing below.

- (f) Was the corner restored through acceptance of (1) an obliterated evidence location, or, (2) a found perpetuated location?

Restored from accepted evidence.

- (gkh) Was the corner reestablished through lost corner proportionate methods? If so, show the method, including the directions and distances to other public land survey corners used as evidence or used for proportioning in determining the corner location?



- (i) I, Gary L. Pisoni
(Type or print name) certify that the corner location shown on this record was determined by me or under my direction and control and that this U.S. Public Land Survey Monument Record is correct and complete to the best of my knowledge and belief.

Signature

Gary L. Pisoni

Date

Jan 12, 1993

CERTIFIED LAND CORNER RESTORATION

State of Wisconsin

County of Forest

ss.

DOCUMENT NUMBER 99465

I, Jean F. Resvick, do hereby certify that on the 9th day of September, 1970, I found evidence of the West Quarter corner of Section 30 Township 41 North, Range 14 East, Fourth Principal Meridian, as described hereon; and that from this evidence I established a new monument and accessories as described hereon to perpetuate the original location of this corner:

Description of original monument and accessories and subsequent restorations:

Survey in 1865 by William Daugherty and McDill. Dependent Resurvey in 1942 by Guy R. Veal. Set a concrete monument, 24 inches long, 4 inches in diameter, 18 inches in the ground, with an iron post, 22 inches long, 1 inch in diameter, embedded in center, with brass cap marked: $\frac{1}{4}$, S25, S30, 1942. From which the following bear:

A fallen White Pine, 26" diam., bears N44W, 17 lks.

Rotted Birch stump, bears S51E, 19 lks.

Local bearing tree, Yellow Birch, 11", bears S89°15'W, 20½ lks.

New Bearing Trees:

Hemlock 8", bears N81°30'E, 67 lks.

Hemlock 11" bears N22W, 77 lks.

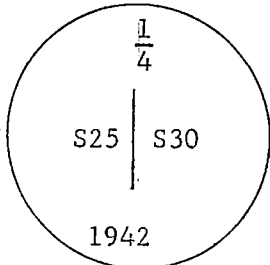
Description of corner evidence found:

Monument found as described above with brass cap stamped.
From which the following bear:

Yellow Birch, 15, bears S80°30'W, 13.50 feet

Hemlock, fallen, bears N81°30'E, 44.20 feet, scribing readable

Hemlock 15, bears N21°30'W, 50.82 feet



Description of monument and accessories I established to perpetuate the original location of this corner:

Blazed and scribed the following new bearing trees.

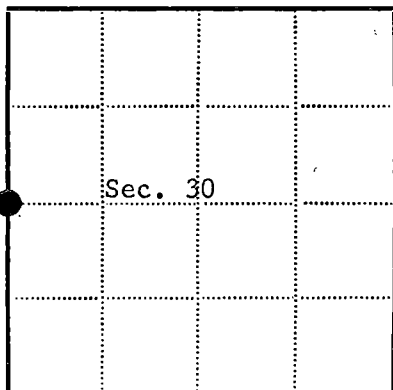
Cedar 14, bears S48E, 56 lks.

Set steel post with signs. 1 foot NW of monument.

Place bearing tree signs on Yellow Birch and Hemlock



44113252000



● = Corner monument restored

□ =

Resident witnesses

Dated at Rhinelanders, Wisconsin, this 2nd day of Nov. 1970.

Signature Jean F. Resvick Title Cadastral Surveyor
(County Surveyor, Registered Land Surveyor, or other duly authorized official)

Surveyors Registration No. S-802

Office of Register of Deeds County of Forest

I hereby certify that the within instrument was filed in this office for record on the 16th day of March 1971, and was filed in Book No. 1 Page No. T-1 of County Records.

Signature Eugene Staszewski Title Register of Deeds

Township 41 North, Range 14 East, Section 30, Index No. T-1, Page No.

U.S. PUBLIC LAND SURVEY MONUMENT RECORD

Index No. T-25

State of Wisconsin }
County of Forest } ss.

I, Gary L. Pisoni, do hereby
certify that on the 10th day
of February, 1992, I found
evidence of the East Quarter
corner of Section 25
Township 41 North, Range
14 East, Fourth Principal Meridian,
as described hereon; and that from this evidence
I established a new monument and accessories
as described hereon to perpetuate the original
location of this corner.

Resident witnesses:

History of original corner establishment:

In 1973, Jean Resvick, a Land Surveyor with the Forest Service, restored the corner
position using original bearing tree evidence. He set a 2 inch inside diameter galvanized
wrought iron pipe, 5 feet long, with a brass cap stamped; T41N, R14E, R15E, 1/4, S25,
S30, 1972, S-802. From which the following bear;

Sugar	10"	S06°W	44.57 feet
Sugar	8"	N79°E	23.59 feet
Galvanized Iron Sign Post		Northwest	1.00 feet
Old Post		Southwest	4.00 feet

Description of corner evidence found:

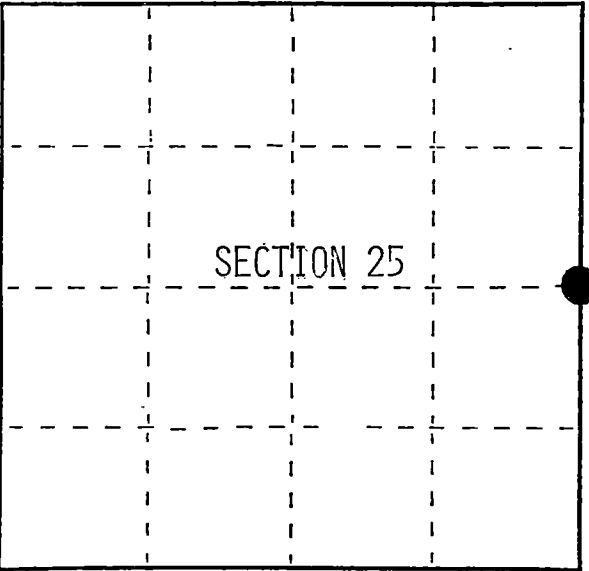
Found monument as described and in place, from which the following bear;

S. Maple	12"	N81°E	23.62 feet
S. Maple	28"	S14°E	24.62 feet
S. Maple	13"	S08°W	44.57 feet
Y. Birch	26"	N74°W	11.30 feet
Steel Sign Post		N36°W	0.90 feet

Description of monument and accessories I established to perpetuate the original location of this corner.

Blazed and scribed a new bearing tree; (measurement taken to a nail in side of tree)

S. Maple	10"	N12°W	25.93 feet
----------	-----	-------	------------



○ = Corner monument restored.

Dated at Iron River, MI, Wis., this 16th day of February, 1992

Signature: Gary L. Pisoni Title: Land Surveyor Registration No. S-1634
(County Surveyor, Registered Land Surveyor, or other duly authorized official)

Office of Register of Deeds, County of Forest, I hereby certify that the within
instrument was filed in this office for record on the 12th day of August, 1993
at 1:25 o'clock P. M.

(Register of Deeds)
By: [Signature] Deputy

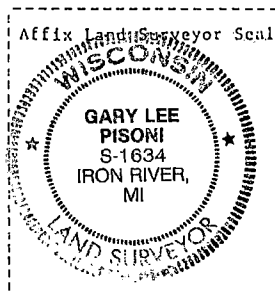
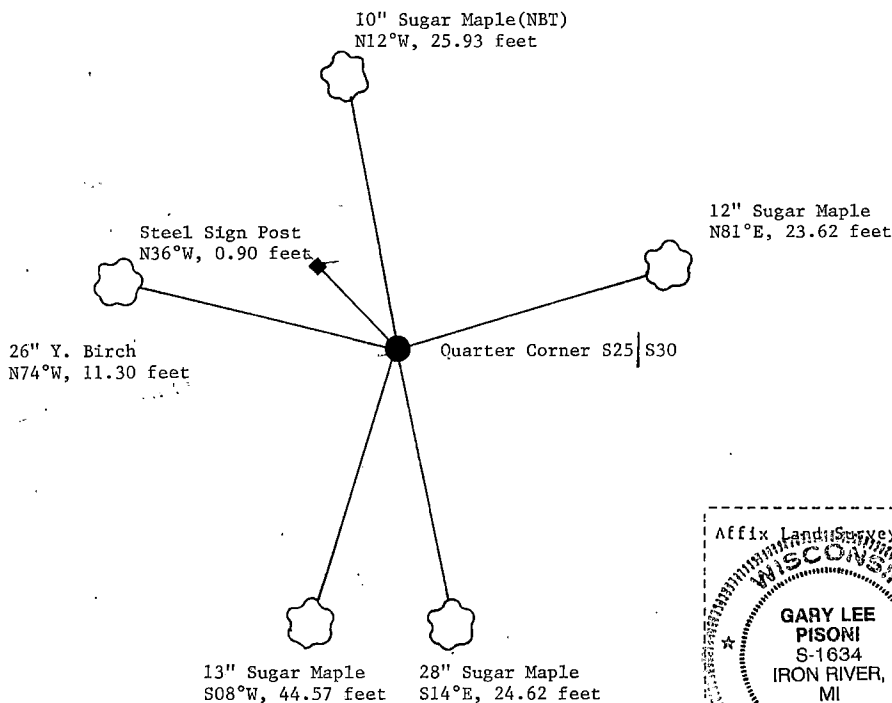
44114252000

(e) Describe any material discrepancy between the location of the corner as restored or reestablished and the location of that corner as previously restored or reestablished by distance and direction. Show the discrepancy on the plan view drawing under (d), above. Show the distances between the corner as previously restored or reestablished and (1) the corner as restored or reestablished, and (2) to at least 2 of the witness monuments shown on the drawing in (d), above.

(f) Was the corner restored through acceptance of (1) an obliterated evidence location, or, (2) a found perpetuated location?

Restored through acceptance of a found perpetuated location.

(gkh) Was the corner reestablished through lost corner proportionate methods? If so, show the method, including the directions and distances to other public land survey corners used as evidence or used for proportioning in determining the corner location?



(i) Gary L. Pisoni
(type or print name) certify that the corner location shown on this record was determined by me or under my direction and control and that this U.S. Public Land Survey Monument Record is correct and complete to the best of my knowledge and belief.

Signature

Gary L. Pisoni

Jan 12, 1993

Date

CERTIFIED LAND CORNER RESTORATION

State of Wisconsin

County of Forest

ss.

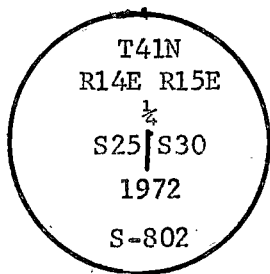
I, Jean E. Resvick, do hereby certify that on the 10th day of May, 19 73, I found evidence of the East quarter corner of Section 25 Township 41 North, Range 14 East, Fourth Principal Meridian, as described hereon; and that from this evidence I established a new monument and accessories as described hereon to perpetuate the original location of this corner:

Description of original monument and accessories and subsequent restorations:

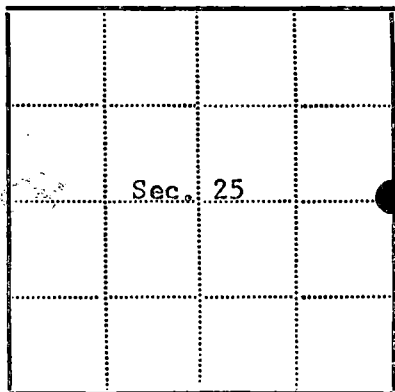
Surveyed in 1864 by William E. Daugherty
40.00 chains north between Section 25 and 30, set post
Birch 15, N75W, 17 lks.
Sugar 12, S15E, 37 lks.

Description of corner evidence found:

Forest Service location posters on Birch and Cedar.
Poster on Cedar dated 8/4/34
Birch 29 inch diameter, has old blazes but has been dug into, no scribing found
Sugar 24 inch diameter, has old blazes healed over, tree is hollow but could have overgrowth evidence if cut open.
2 old scribed post lying by Birch
Old post standing.
Station point which bears S75E, 17 lks. from Birch 29" and N15W, 37 lks. from Sugar 24"
Post found bears southwest 4 feet.
Description of monument and accessories I established to perpetuate the location of this corner:
At the recorder bearing a distance from bearing trees, set a 2 inch inside diameter, galvanized wrought iron pipe, 5 feet long filled with concrete, with brass cap stamped.



From which the following new blazed and scribed bearing trees bear:
Sugar 10, S6W, 44.57 feet
Sugar 8, N79E, 23.59 feet
Set galvanized sign post 1 foot northwest of Monument
Old post bears 4 feet southwest of Monument.



● = Corner monument restored
□ =

Resident witnesses.....

Dated at Rhineland Wisconsin, this 10th day of May, 19 73.

Signature Jean E. Resvick
(County Surveyor, Registered Land Surveyor, or other duly authorized official)

Surveyors Registration No. S-802

Office of Register of Deeds County of Forest

I hereby certify that the within instrument was filed in this office for record on the 13th day of November, 19 73, and was filed in Book Corner Restorations No. T-25 Page No. T-25 of County Records.

Signature Eugene Stetson Title Register of Deeds

Township 41 North, Range 14 East Section 25, Index No. T-25, Page No. 125

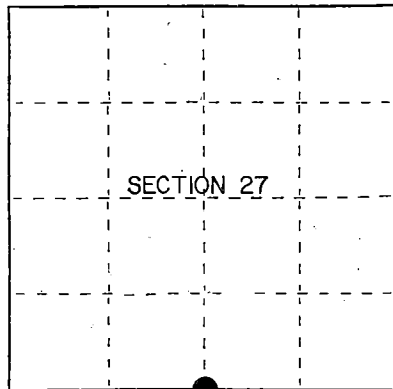
44114252000



State of Wisconsin } ss.
County of Forest }

I, Gary L. Pisoni, do hereby
certify that on the 24th day
of July, 1991, I found
evidence of the South Quarter
corner of Section 27
Township 41 North, Range
14 East, Fourth Principal Meridian,
as described hereon; and that from this evidence
I established a new monument and accessories
as described hereon to perpetuate the original
location of this corner.

Resident witnesses:



● = Corner monument restored.

History of original corner establishment:

Original Government Survey in 1865 by William E. Daugherty. West corrected between
Sections 27 and 34, at 40.16 chs., set Quarter Section Post to Sections 27 and 34,
from which the following bear;

Spruce	10"	S40°W	22 lks.
Sugar	10"	N31°E	20 lks.

Description of corner evidence found:

No original corner evidence was recovered.

I restored the corner position at proportionate distance and on line between the
Southeast and Southwest Section Corners of Section 27.

Description of monument and accessories I established to perpetuate the original location of this corner.

At the corner position, set a 2½ inch diameter aluminum pipe monument, 3 feet long,
3 inches above the ground, with an aluminum cap stamped; T41N R14E, 1/4, S27, S34,
1991, S-1634. From which the following new blazed and scribed bearing trees bear;
(measurements taken to a nail in side of tree)

W. Spruce	14"	N37°W	25.77 feet
S. Maple	13"	N74°E	20.33 feet
S. Maple	11"	S60°E	22.51 feet
S. Maple	10"	S54°W	19.65 feet
Steel Sign Post		North	0.70 feet

Dated at Iron River, MI, Wis, this 16th day of February, 1992

Signature Gary L. Pisoni Title Land Surveyor Registration No. S-1634
(County Surveyor, Registered Land Surveyor, or other duly authorized official)

Office of Register of Deeds, County of Forest, I hereby certify that the within
instrument was filed in this office for record on the 10th day of March, 1992
at 10:45 o'clock A. M.

J. Paul Haleschauer
(Register of Deeds)

By _____ Deputy

(e) Describe any material discrepancy between the location of the corner as restored or reestablished and the location of that corner as previously restored or reestablished by distance and direction. Show the discrepancy on the plan view drawing under (d), above. Show the distances between the corner as previously restored or reestablished and (1) the corner as restored or reestablished, and (2) to at least 2 of the witness monuments shown on the drawing in (d), above.

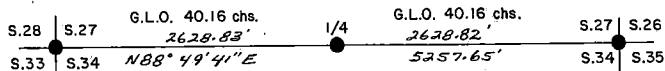
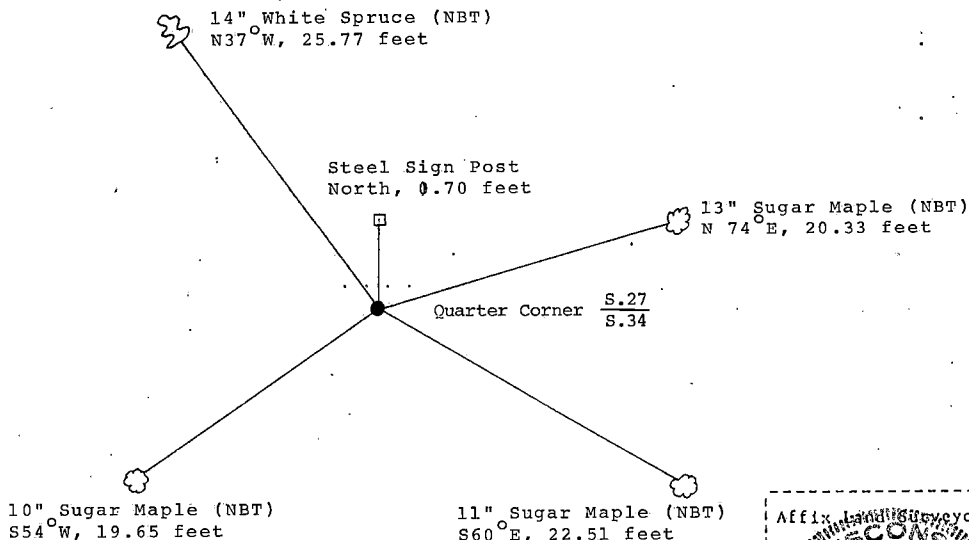
See drawing below.

(f) Was the corner restored through acceptance of (1) an obliterated evidence location, or, (2) a found perpetuated location?

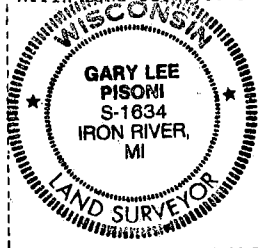
Restored through lost corner proportionate methods.

(g&h) Was the corner reestablished through lost corner proportionate methods? If so, show the method, including the directions and distances to other public land survey corners used as evidence or used for proportioning in determining the corner location?

Reestablished through lost corner proportionate methods.



Affix Land Surveyor Seal



Gary L. Pisoni

(i) I, Gary L. Pisoni, certify that the corner location shown on this record was determined by me or under my direction and control and that this U.S. Public Land Survey Monument Record is correct and complete to the best of my knowledge and belief.

Signature

Date

Survey requested by:

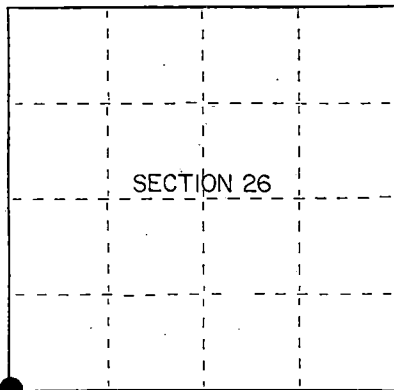
District Ranger

Date

State of Wisconsin } ss.
County of Forest

I, Gary L. Pisoni, do hereby
certify that on the 24th day
of July, 1991, I found
evidence of the Southwest Section
corner of Section 26
Township 41, North, Range
14 East, Fourth Principal Meridian,
as described hereon; and that from this evidence
I established a new monument and accessories
as described hereon to perpetuate the original
location of this corner.

Resident witnesses:



● = Corner monument restored.

History of original corner establishment:

Original Government Survey in 1865 by William E. Daugherty. North between Sections 34 and 35, at 80.00 chs., set Section Corner Post to Sections 26, 27, 34 and 35, from which the following bear;

Tamarack	12"	N44°W	43 lks.
Tamarack	15"	S80°E	37 lks.

Description of corner evidence found:

No original corner evidence was recovered.

I restored the corner using double proportionate methods between Gaspardo Creek and the Meander Corner between Sections 22 and 23, and between the Southwest Section Corner of Section 27 and the Southeast Section Corner of Section 26.

Description of monument and accessories I established to perpetuate the original location of this corner.

At the corner position, set a 2½ inch diameter aluminum pipe monument, 3 feet long, 3 inches above the ground, with an aluminum cap stamped; T41N R14E, S26, S27, S34, S35, 1991, S-1634. From which the following new blazed and scribed bearing trees bear; (measurements taken to a nail in side of tree)

W. Spruce	9"	N39°E	43.36 feet
Tamarack	10"	S10°E	18.49 feet
Tamarack	12"	S33°W	27.71 feet
W. Spruce	14"	N54°W	9.63 feet
Steel Sign Post		East	0.53 feet

Dated at Iron River, MI, this 16th day of February, 1992

Signature Gary L. Pisoni Title Land Surveyor Registration No S-1634
(County Surveyor, Registered Land Surveyor, or other duly authorized official)

Office of Register of Deeds, County of Forest, I hereby certify that the within
instrument was filed in this office for record on the 10th day of March, 1993
at 10:45 o'clock A. M.

Paul H. Schenck
(Register of Deeds)

By _____ Deputy

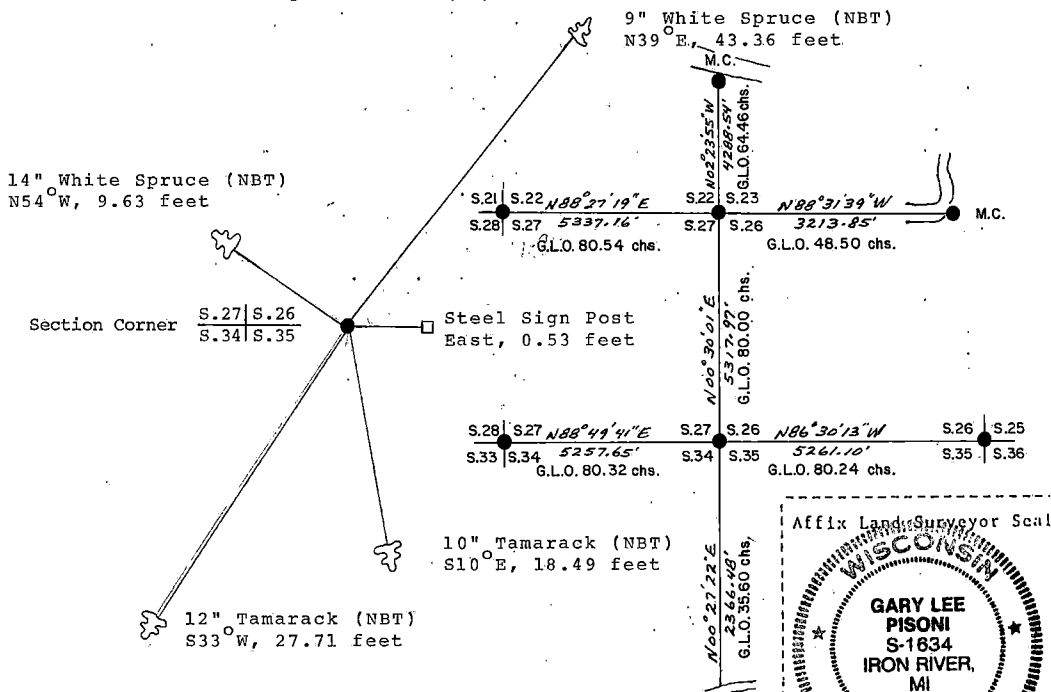
- (e) Describe any material discrepancy between the location of the corner as restored or reestablished and the location of that corner as previously restored or reestablished by distance and direction. Show the discrepancy on the plan view drawing under (d), above. Show the distances between the corner as previously restored or reestablished and (1) the corner as restored or reestablished, and (2) to at least 2 of the witness monuments shown on the drawing in (d), above.

See drawing below.

- (f) Was the corner restored through acceptance of (1) an obliterated evidence location, or, (2) a found perpetuated location?

Restored through lost corner proportionate methods.

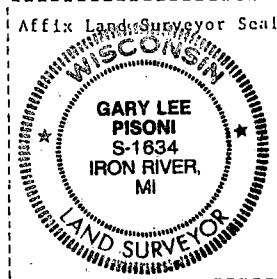
- (g&h) Was the corner reestablished through lost corner proportionate methods? If so, show the method, including the directions and distances to other public land survey corners used as evidence or used for proportioning in determining the corner location?
Reestablished through lost corner proportionate methods.



- (i) Gary L. Pisoni
(Type or print name) certify that the corner location shown on this record was determined by me or under my direction and control and that this U.S. Public Land Survey Monument Record is correct and complete to the best of my knowledge and belief.

Signature Gary L. Pisoni Date March 13th 1992

Survey requested by: [Signature] District Ranger Date 4/2/92



U.S. PUBLIC LAND SURVEY MONUMENT RECORD

Index No. V-19

State of Wisconsin }
County of Forest } ss.

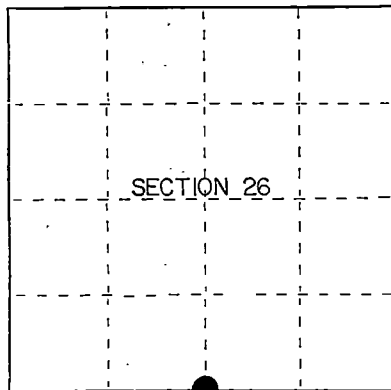
I, Gary L. Pisoni, do hereby certify that on the 1st day of August, 1991, I found evidence of the South Quarter corner of Section 26 Township 41, North, Range 14 East, Fourth Principal Meridian, as described hereon; and that from this evidence I established a new monument and accessories as described hereon to perpetuate the original location of this corner.

Resident witnesses:

.....

.....

.....



● = Corner monument restored.

History of original corner establishment:

Original Government Survey in 1865 by William E. Daugherty. West corrected between Sections 26 and 35, at 40.12 chs., set Quarter Section Post to Sections 26 and 35, from which the following bear;

Tamarack	6"	S30°E	14 lks.
Spruce	5"	N15°W	11 lks.

Description of corner evidence found:

No original corner evidence was recovered.

I restored the corner position at proportionate distance and on line between the Southwest and Southeast Section Corners of Section 26.

Description of monument and accessories I established to perpetuate the original location of this corner.

At the corner position, set a 2½ inch diameter aluminum pipe monument, 3 feet long, 3 inches above the ground, with an aluminum cap stamped; T41N R14E, 1/4, S26, S35, 1991, S-1634. From which the following new blazed and scribed bearing trees bear; (measurements taken to a nail in side of tree)

Balsam	8"	N44°W	17.65 feet
Balsam	9"	N11°E	19.12 feet
B. Cherry	7"	N79°E	14.97 feet
W. Spruce	13"	S84°E	61.24 feet
Steel Sign Post		West	0.64 feet

Dated at Iron River, MI, this 16th day of February, 1922.

Signature Gary L. Pisoni Title Land Surveyor Registration No S-1634
(County Surveyor, Registered Land Surveyor, or other duly authorized official)

Office of Register of Deeds, County of Forest, I hereby certify that the within instrument was filed in this office for record on the 10th day of March, 1993 at 10:45 o'clock A. M.

Paul Schenck
(Register of Deeds)

By _____ Deputy

- (d) Describe any material discrepancy between the location of the corner as restored or reestablished and the location of that corner as previously restored or reestablished by distance and direction. Show the discrepancy on the plan view drawing under (d), above. Show the distances between the corner as previously restored or reestablished and (1) the corner as restored or reestablished, and (2) to at least 2 of the witness monuments shown on the drawing in (d), above.

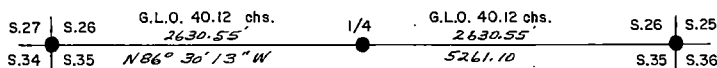
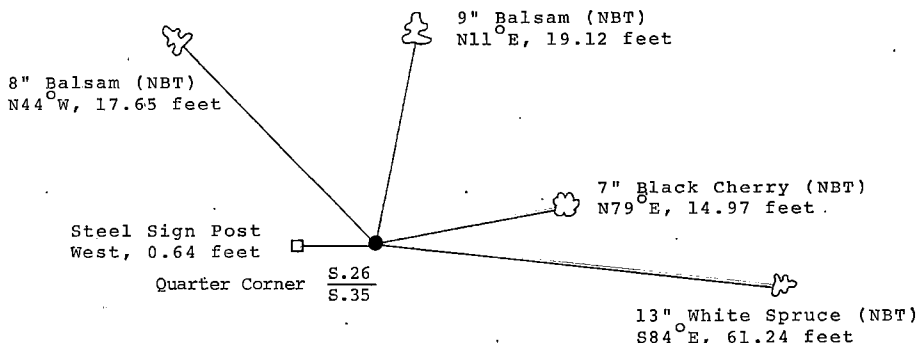
See drawing below.

- (f) Was the corner restored through acceptance of (1) an obliterated evidence location, or, (2) a found perpetuated location?

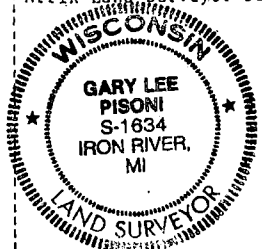
Restored through lost corner proportionate methods.

- (g) Was the corner reestablished through lost corner proportionate methods? If so, show the method, including the directions and distances to other public land survey corners used as evidence or used for proportioning in determining the corner location?

Reestablished through lost corner proportionate methods.



Affix Land Surveyor Seal



- (i) I, Gary L. Pisoni, certify that the corner location shown on this record was determined by me or under my direction and control and that this U.S. Public Land Survey Monument Record is correct and complete to the best of my knowledge and belief.

Gary L. Pisoni March 13th 1992
Signature Date

Survey Requested by: AW Carr 10/2/92
District Ranger Date

110000

U.S. PUBLIC LAND SURVEY MONUMENT RECORD

Index No. V-21

State of Wisconsin }
County of Forest } ss.

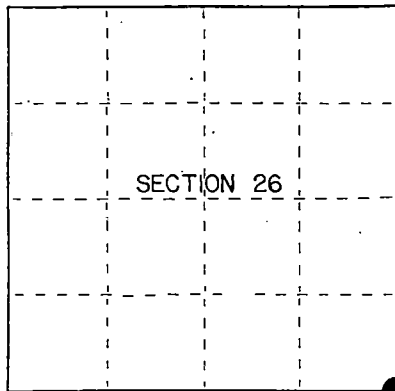
I Gary L. Pisoni, do hereby
certify that on the 21st day
of August, 1991, I found
evidence of the Southeast Section
corner of Section 26
Township 41, North, Range
14 East, Fourth Principal Meridian,
as described hereon; and that from this evidence
I established a new monument and accessories
as described hereon to perpetuate the original
location of this corner.

Resident witnesses:

.....

.....

.....



● = Corner monument restored.

History of original corner establishment:
Original Government Survey in 1865 by William E. Daugherty.

On 8-9-34, Edward Roland, a compassman with the Forest Service found a 4"x4" wood stake from which a scribed Yellow Birch snag bears N45°W, 20.00 feet. Also found a metal location tag on a 6" dia. Maple from which the stake bears West 30.00 feet.

Description of corner evidence found:

Found the Yellow Birch stump and the metal location tag as described above attached to a 18" Maple which is blazed on all 4 sides. The wood post was not recovered.

I accept the Yellow Birch stump and the metal tag as the best available evidence for restoring the corner position.

Description of monument and accessories I established to perpetuate the original location of this corner. At a point S45°E, 20.00 feet from the Yellow Birch stump, set a 2½ inch diameter aluminum pipe monument, 3 feet long, 3 inches above the ground, with an aluminum cap stamped; T41N R14E, S25, S26, S35, S36, 1991, S-1634. From which the following new blazed and scribed bearing trees bear; (measurements taken to a nail in side of tree)

S. Maple	9"	N49°E	11.18 feet
S. Maple	9"	S02°W	25.46 feet
S. Maple	8"	N86°W	3.38 feet
S. Maple	8"	N32°W	20.50 feet
Steel Sign Post		North	0.69 feet

Dated at Iron River, MI, ~~was~~ this 16th day of February, 1992

Signature Gary L. Pisoni Title Land Surveyor Registration No S-1634
(County Surveyor, Registered Land Surveyor, or other duly authorized official)

Office of Register of Deeds, County of Forest, I hereby certify that the within instrument was filed in this office for record on the 10th day of March, 1993 at 10:45 o'clock PM.

Paul A. Schaeffer
(Register of Deeds)

By: _____ Deputy

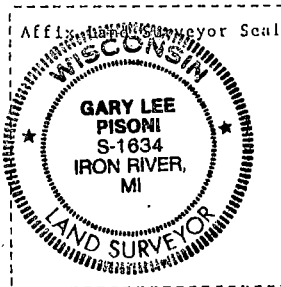
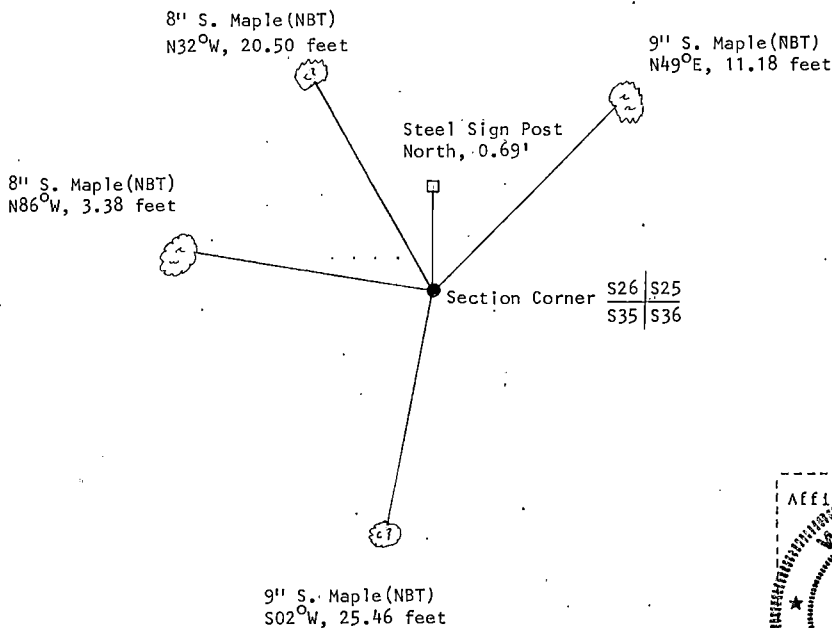
- (d) Describe any material discrepancy between the location of the corner as restored or reestablished and the location of that corner as previously restored or reestablished by distance and direction. Show the discrepancy on the plan view drawing under (d), above. Show the distances between the corner as previously restored or reestablished and (1) the corner as restored or reestablished, and (2) to at least 2 of the witness monuments shown on the drawing in (d), above.

See drawing below.

- (f) Was the corner restored through acceptance of (1) an obliterated evidence location, or, (2) a found perpetual location?

Restored from accepted evidence.

- (g&h) Was the corner reestablished through lost corner proportionate methods? If so, show the method, including the directions and distances to other public land survey corners used as evidence or used for proportioning in determining the corner location?



(i) I, Gary L. Pisoni

[Type or print name] certify that the corner location shown on this record was determined by me or under my direction and control and that this U.S. Public Land Survey Monument Record is correct and complete to the best of my knowledge and belief.

Gary L. Pisoni March 13th 1992
Signature Date

Survey requested by: [Signature] 6/2/82
District Ranger Date

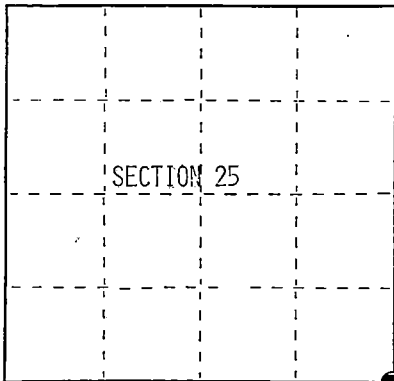
U.S. PUBLIC LAND SURVEY MONUMENT RECORD

Index No. V-25

State of Wisconsin }
County of Forest } ss.

I, Gary L. Pisoni, do hereby
certify that on the 10th day
of February, 1992, I found
evidence of the Southeast Section
corner of Section 25
Township 41, North, Range
14 East, Fourth Principal Meridian,
as described hereon; and that from this evidence
I established a new monument and accessories
as described hereon to perpetuate the original
location of this corner.

Resident witnesses:



○ = Corner monument restored.

History of original corner establishment:

Original Government Survey in 1864 by William E. Daugherty.

In 1973, Jean Resvick, a Land Surveyor with the Forest Service, restored the corner position using a post point and original bearing tree evidence. He replaced post point with a 2 inch inside diameter galvanized iron pipe, 3 feet long, with a brass cap stamped; T41N, R14E, R15E, S25, S30, S36, S31, 1973, S-802. Blazed and scribed the following;

Maple	9"	S62°E	30.64 feet
Hemlock	14"	S36°W	36.33 feet
Galvanized Post		Southeast	1.00 feet

Description of corner evidence found:

Found the following bearing trees;

Hemlock	16"	N63°E	15.37 feet
S. Maple	13"	S64°E	30.57 feet
S. Maple	8"	N88°W	49.73 feet (Made by Thomas Arnott)
Steel Sign Post		S29°E	1.00 feet

Description of monument and accessories I established to perpetuate the original location of this corner.

Blazed and scribed the following new bearing tree: (measurement taken to a nail in side of tree)

S. Maple	6"	S18°W	44.87 feet
----------	----	-------	------------

Dated at Iron River, MI, ~~xxxx~~ this 16th day of February, 19 92

Signature: Gary L. Pisoni Title Land Surveyor Registration No. S-1634
(County Surveyor, Registered Land Surveyor, or other duly authorized official)

Office of Register of Deeds, County of Forest, I hereby certify that the within instrument was filed in this office for record on the 12th day of August, 19 93 at 1:25 o'clock P M.

(Register of Deeds)
By Paul Chittie Deputy

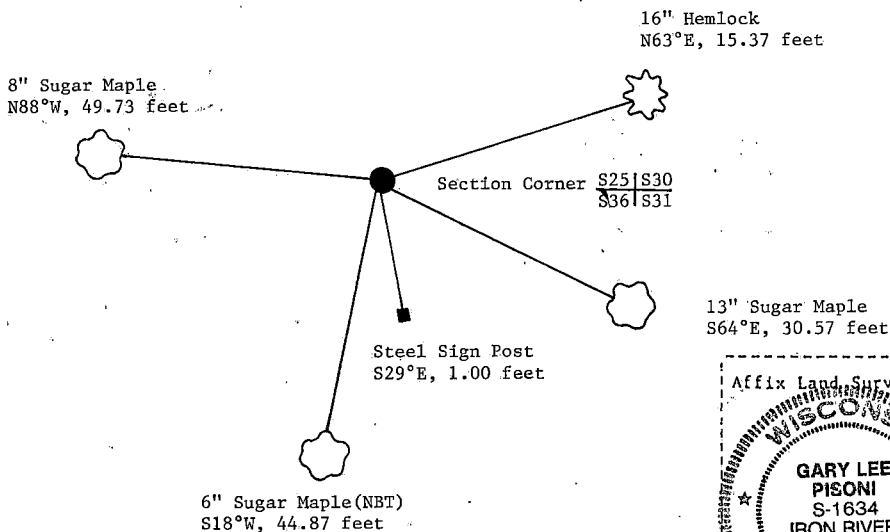
- (e) Describe any material discrepancy between the location of the corner as restored or reestablished and the location of that corner as previously restored or reestablished by distance and direction. Show the discrepancy on the plan view drawing under (d), above. Show the distances between the corner as previously restored or reestablished and (1) the corner as restored or reestablished, and (2) to at least 2 of the witness monuments shown on the drawing in (d), above.

See drawing below.

- (f) Was the corner restored through acceptance of (1) an obliterated evidence location, or, (2) a found perpetuated location?

Restored through acceptance of a found perpetuated location.

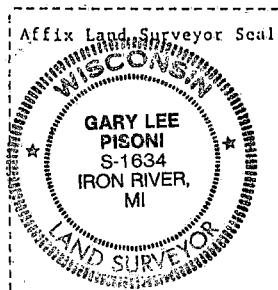
- (g) Was the corner reestablished through lost corner proportionate methods? If so, show the method, including the directions and distances to other public land survey corners used as evidence or used for proportioning in determining the corner location?



- (i) Gary L. Pisoni
(Type or print name) certify that the corner location shown on this record was determined by me or under my direction and control and that this U.S. Public Land Survey Monument Record is correct and complete to the best of my knowledge and belief.

Gary L. Pisoni
Signature

Jan 12, 1993
Date



CERTIFIED LAND CORNER RESTORATION

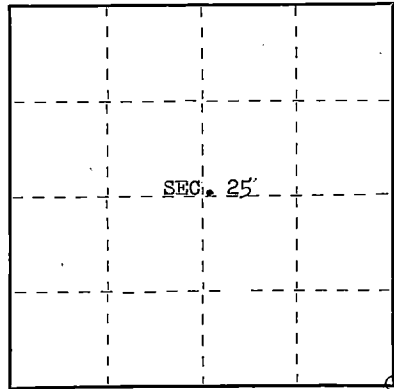
Index No. **V25**

State of Wisconsin }
County of Forest } ss.

I Thomas R. Arnott, do hereby certify that on the 14th day of September, 19 76, I found evidence of the section corner of sections 25, 30, 31 & 36 Township 41 North, Range 14 & 15 E, Fourth Principal Meridian, as described hereon; and that from this evidence I established a new monument and accessories as described hereon to perpetuate the original location of this corner.

Resident witnesses:

FORM 985 H. C. MILLER CO., MILWAUKEE



○ = Corner monument restored.

History of original corner establishment:

Surveyed in 1864 by William E. Daugherty

Hemlock	18	N58E	23 lks.
Hemlock	18	N42W	33 lks.
Sugar	10	S18W	26 lks.
Sugar	24	S32E	28 lks.

Description of corner evidence found:

Found 2 inch inside diameter galvanized iron pipe, 3 feet long, filled with concrete with brass cap. Monument was set and bearing trees blazed and scribed by Jean Resvick of the U.S. Forest Service.
Maple 9 S62E 30.64 feet
Hemlock 14 S36W 36.33 feet (this tree was knock over during logging operations)

Description of monument and accessories I established to perpetuate the original location of this corner.

Left iron pipe with concrete and brass cap
Left Maple 9 inch S62E 30.64 feet

New Ties:

Balsam	6	S62W	32.11 feet
Maple	5	S81W	49.63 feet



Dated at Grandon, Wis., this 23rd day of Sept, 19 76.

Signature Thomas R. Arnott Title Surveyor Registration No. S-887
(County Surveyor, Registered Land Surveyor, or other duly authorized official)

Office of Register of Deeds, County of Forest, I hereby certify that the within instrument was filed in this office for record on the 23rd day of September, 19 76 at 4 o'clock P. M.

Eugene Stetson
(Register of Deeds)

Document No. **110212**

By _____ Deputy

44114250000

CERTIFIED LAND CORNER RESTORATION

State of Wisconsin

County of Forest

ss.

I, Jean F. Resvick, do hereby certify that on the 10th day of May, 1973, I found evidence of the Southeast Section corner of Section 25 Township 41 North, Range 14 East, Fourth Principal Meridian, as described hereon; and that from this evidence I established a new monument and accessories as described hereon to perpetuate the original location of this corner:

Description of original monument and accessories and subsequent restorations:

Surveyed in 1864 by William E. Daugherty
80.00 chains north between Section 31 and 36
Set post
Hemlock 18, bears N58E, 23 lks.
Hemlock 18, bears N42W, 33lks.
Sugar 10, bears S18W, 26 lks.
Sugar 24, bears S32E, 28 lks.

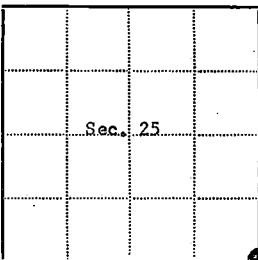
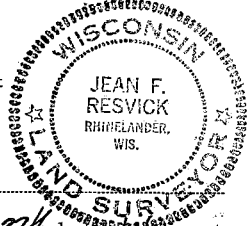
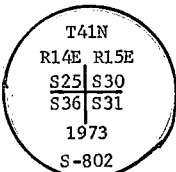
Description of corner evidence found:

Found 3x3 squared cedar post, scribed, 1 foot long, lying on ground, found post point.
From post point: Hemlock 8 inch diameter when scribed, bears N62E, 23 lks. (Recorded as N58E)
Sugar stump bears S18E, 28 lks. (Recorded as S32E)
Hemlock stump bears N52W, 33lks. (Recorded as 42)
Scribed Hemlock now 16 inch diameter has been chopped out 3 or 4 times.
All distances check but bearings and tree diameters disagree with record.
No evidence found of 10 inch Maple.

Description of monument and accessories I established to perpetuate the location of this corner:

Replaced old post point with 2 inch inside diameter galvanized iron pipe, 3 feet long, filled with concrete to weigh 5 pounds per foot with brass cap stamped.

Blazed and scribed the following new bearing trees:
Maple 9, bears S62E, 30.64 feet
Hemlock 14, bears S36W, 36.33 feet
Galvanized sign post set 1 foot southeast of monument



Resident witnesses.....

Dated at Rhinelanders Wisconsin, this 27th day of May, 1973.....

Signature Jean F. Resvick Title Land Surveyor
(County Surveyor, Registered Land Surveyor, or other duly authorized official)

Surveyors Registration No. S-802 DOCUMENT NUMBER 104458

Office of Register of Deeds County of Forest

I hereby certify that the within instrument was filed in this office for record on the 13th day of November, 1973, and was filed in Book No. 13 Page No. V-25 of County Records.

Signature Eugene Stutzman Title Register of Deeds

Township 41 North, Range 14 East, Section 25, Index No. V-25, Page No. V-25

4 4114250000

V-25

CERTIFIED LAND CORNER RESTORATION

State of Wisconsin

County of Forest

ss.

I Jean F. Resvick, do hereby certify that on the 11th day of June, 1968, I found evidence of the West Quarter corner of Section 33 Township 41 North, Range 14 East, Fourth Principal Meridian, as described hereon; and that from this evidence I established a new monument and accessories as described hereon to perpetuate the original location of this corner:

Description of original monument and accessories and subsequent restorations:

Surveyed by Wm. E. Daugherty in 1865.
North between Sections 32 and 33, 40.00 chains
Set wood post.
Maple, 10 ins., N. 20° W., 16 Lks.
Hemlock, 6 ins., S. 65° E., 17 Lks.

Description of corner evidence found:

6x6 post set by Louis Verch in 1964 replacing 4x4 Cedar post he found.
4x4 Cedar post lying by 6x6 post.
From post found above. Maple 18 inch diameter, bears N. 20° W., 10.6 ft. with open blaze and rotted out. Hemlock 11 inch diameter, bears S. 65° E., 11.2 ft. with open blaze scribing visible.
Mr. Verch showed me this corner in May 1965 and the section corner to the North was recovered the same day.

Description of monument and accessories I established to perpetuate the original location of this corner:

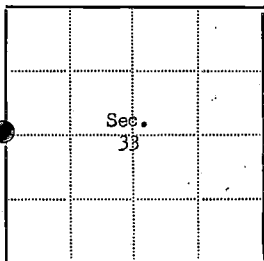
Replaced 6x6 cedar post with a 2-inch inside diameter galvanized wrought iron pipe, 5 feet long, filled with concrete, flanged at the bottom with brass cap marked:

from which the following blazed and scribed new bearing trees bear:

Cedar, 15 ins., N. 81° E., 64.90 ft. or 98.33 Lks.
Maple, 11 ins., N. 67° W., 35.34 ft. or 53.54 Lks.
Set 4x4 Cedar post 2 feet West of monument

THIN BLAZE
S32 S33
1968
S-802

44114322000



⊙ = Corner monument restored

□ =

Resident witnesses.....

Dated at Rhinelander Wisconsin, this 25th day of June, 1968

Signature Jean F. Resvick Title Cadastral Surveyor
(County Surveyor, Registered Land Surveyor, or other duly authorized official)

Surveyors Registration No. S-802 DOCUMENT NO. 95058

Office of Register of Deeds County of Forest

I hereby certify that the within instrument was filed in this office for record on the 8th day of August, 1968, and was filed in Book No. I Page No. X-9 of County Records at 9:45 A.M..

Signature Eugene Stetson Title Register of Deeds

Township 41 North, Range 14 East, Section 33, Index No. X-9, Page No. 6

Stock No. 26273

DOCUMENT NUMBER 132464

U.S. PUBLIC LAND SURVEY MONUMENT RECORD

Index No. Z-1

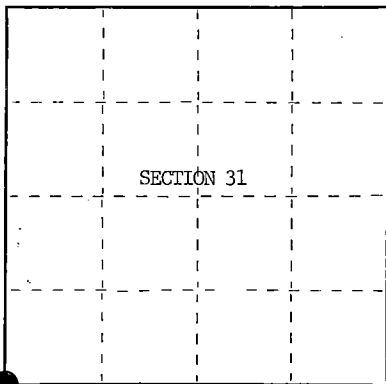
State of Wisconsin }
County of Forest } ss,

I, William B. Cochran, do hereby certify that on the 31st day of July, 1986, I found evidence of the Southwest Standard Section corner of Section 31 Township 41, North, Range 14 East, Fourth Principal Meridian, as described hereon; and that from this evidence I established a new monument and accessories as described hereon to perpetuate the original location of this corner.

Resident witnesses:

David Brownell

Tony Tillman



○ = Corner monument restored.

History of original corner establishment:

Original Government Survey in 1857 by Artemas Curtis. Dependent Resurvey in 1942 by Guy R. Veal. East on the South side of Section 36, R13E, 39.93 chains, found a wooden post, rotted to the ground, and a new post, 4 inches square x 36 inches long. In place of post, set a concrete monument, 2 feet long, 6 inches in dia., 18 inches in the ground, with an iron post in center, and a brass cap mkd; SC, R13E, R14E, S31, S36, 1942. From which the following bear;

Hemlock	14"	N12°E	100 lks. (66.00 feet)
Poplar	5"	N26°W	125 lks. (82.50 feet)

Description of corner evidence found:

Found monument as described and in place, from which a Hemlock stub bears N12°E, 66.00 feet.

No evidence of Poplar bearing tree.

Description of monument and accessories I established to perpetuate the original location of this corner.

Blazed and scribed the following new bearing trees;

Maple	8"	N19°E	34.88 feet
Maple	10"	S 6°E	5.49 feet
Maple	9"	N57°W	23.06 feet
Steel Sign Post		North	1.00 feet

Dated at Hiles Wis., this 25th day of September, 19 86

Signature William B. Cochran Title Land Surveyor Registration No. S-1107
(County Surveyor, Registered Land Surveyor, or other duly authorized official)

Office of Register of Deeds, County of Forest, I hereby certify that the within instrument was filed in this office for record on the 11th day of March, 19 87 at 3:30 o'clock P. M.

Paul Aschenbrenner
(Register of Deeds)

By _____ Deputy

44113360000

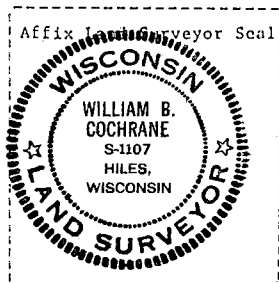
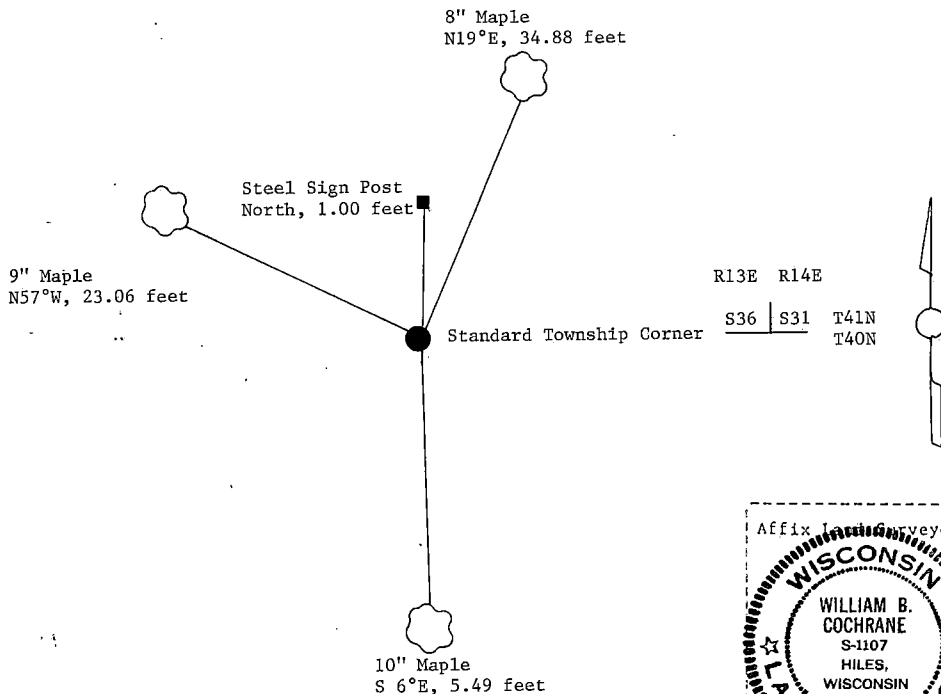
(e) Describe any material discrepancy between the location of the corner as restored or reestablished and the location of that corner as previously restored or reestablished by distance and direction. Show the discrepancy on the plan view drawing under (d), above. Show the distances between the corner as previously restored or reestablished and (1) the corner as restored or reestablished, and (2) to at least 2 of the witness monuments shown on the drawing in (d), above.

See drawing below.

(f) Was the corner restored through acceptance of (1) an obliterated evidence location, or, (2) a found perpetuated location?

Restored through acceptance of a found perpetuated location.

(g&h) Was the corner reestablished through lost corner proportionate methods? If so, show the method, including the directions and distances to other public land survey corners used as evidence or used for proportioning in determining the corner location?



(i) I, William B. Cochrane
(type or print name) certify that the corner location shown on this record was determined by me or under my direction and control and that this U.S. Public Land Survey Monument Record is correct and complete to the best of my knowledge and belief.

William B. Cochrane October 14, 1986
Signature Date

Certificate ready for filing: [Signature] 3 9-87
District Ranger Date

Stock No. 26273

DOCUMENT NUMBER 132465

U.S. PUBLIC LAND SURVEY MONUMENT RECORD

Index No. Z-3

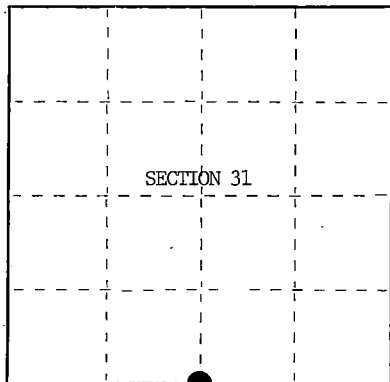
State of Wisconsin }
County of Forest } ss.

I, William B. Cochrane, do hereby certify that on the 30th day of July, 1986, I found evidence of the Standard Quarter Section corner of Section 31 Township 41, North, Range 14 East, Fourth Principal Meridian, as described hereon; and that from this evidence I established a new monument and accessories as described hereon to perpetuate the original location of this corner.

Resident witnesses:

David Brownell

Tony Tillman



○ = Corner monument restored.

History of original corner establishment:

Original Government Survey in 1858 by Artemas Curtis. Dependent Resurvey in 1945 by Hugh B. Crawford. East on the South side of Section 31, 42.60 chains, found original bearing tree evidence. From evidence, set an iron post, 3 feet long, 2 inches in dia., 28 inches in the ground, with a brass cap mkd; SC, 1/4, S31, 1945. From which the following bear;

Poplar	4"	N73°30'E	31 lks. (20.46 feet)
Poplar	4"	N21°00'W	6 lks. (3.96 feet)

Description of corner evidence found:

Found monument as described and in place, from which a Poplar (Stump) bears N21°W, 3.96 feet.

No evidence of other Poplar bearing tree;

Description of monument and accessories I established to perpetuate the original location of this corner.

No Bearing Trees Available.

Steel Sign Post South 1.00 feet

Dated at Hiles, Wis., this 25th day of September, 1986

Signature William B. Cochrane Title Land Surveyor Registration No. S-1107
(County Surveyor, Registered Land Surveyor, or other duly authorized official)

Office of Register of Deeds, County of Forest, I hereby certify that the within instrument was filed in this office for record on the 11th day of March, 1987 at 3:30 o'clock P. M.

Paul Aschenbrenner
(Register of Deeds)

By _____ Deputy

44114310020

- (e) Describe any material discrepancy between the location of the corner as restored or reestablished and the location of that corner as previously restored or reestablished by distance and direction. Show the discrepancy on the plan view drawing under (d), above. Show the distances between the corner as previously restored or reestablished and (1) the corner as restored or reestablished, and (2) to at least 2 of the witness monuments shown on the drawing in (d), above.

See drawing below.

- (f) Was the corner restored through acceptance of (1) an obliterated evidence location, or, (2) a found perpetuated location?

Restored through acceptance of a found perpetuated location.

- (g&h) Was the corner reestablished through lost corner proportionate methods? If so, show the method, including the directions and distances to other public land survey corners used as evidence or used for proportioning in determining the corner location?

1/4 S31 T41N
T40N

Standard Quarter Section Corner

Steel Sign Post
South, 1.00 feet



- (i) I, William B. Cochrane
(type or print name) certify that the corner location shown on this record was determined by me or under my direction and control and that this U.S. Public Land Survey Monument Record is correct and complete to the best of my knowledge and belief.

William B. Cochrane October 14, 1986
Signature Date

Certificate ready for filing: Edward L. [Signature] 3-9-87
District Ranger Date

U.S. PUBLIC LAND SURVEY MONUMENT RECORD

Index No. Z-5

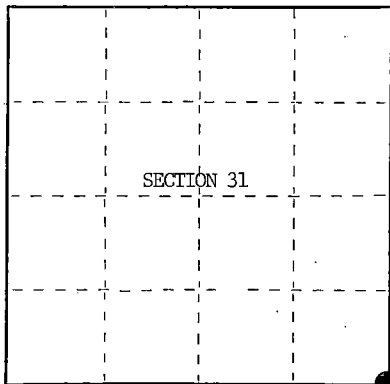
State of Wisconsin }
County of Forest } ss.

I, William B. Cochrane, do hereby certify that on the 22nd day of July, 1986, I found evidence of the Southeast Standard Section corner of Section 31 Township 41, North, Range 14 East, Fourth Principal Meridian, as described hereon; and that from this evidence I established a new monument and accessories as described hereon to perpetuate the original location of this corner.

Resident witnesses:

David Brownell

Tony Tillman



○ = Corner monument restored.

History of original corner establishment:

Original Government Survey in 1858 by Artemas Curtis. Dependent Resurvey in 1945, by Hugh B. Crawford. East on the South side of Section 31, 39.92 chains, the point for corner is determined from original bearing tree remains. At the corner point, set an iron post, 3 feet long, 2 inches in dia., 28 inches in the ground, with a brass cap mkd; SC, S32, S31, 1945. From which the following bear;

Cedar	16"	N22°30'E	144 lks. (95.04 feet)
Maple	10"	N56°45'W	29½ lks. (19.47 feet)

Description of corner evidence found:

Found monument as described and in place, from which the following bear;

Cedar	19"	N22°30'E	95.04 feet
Maple	13"	N56°45'W	19.47 feet

Description of monument and accessories I established to perpetuate the original location of this corner.

Blazed and scribed a new bearing tree;

Y. Birch	8"	N57°E	4.00 feet
Steel Sign Post		South	1.00 feet

Dated at Hiles, Wis., this 25th day of September, 19 86

Signature William B. Cochrane Title Land Surveyor Registration No. S-1107
(County Surveyor, Registered Land Surveyor, or other duly authorized official)

Office of Register of Deeds, County of Forest, I hereby certify that the within instrument was filed in this office for record on the 11th day of March, 19 87 at 3:30 o'clock P. M.

Paul Ackerman
(Register of Deeds)

By _____ Deputy

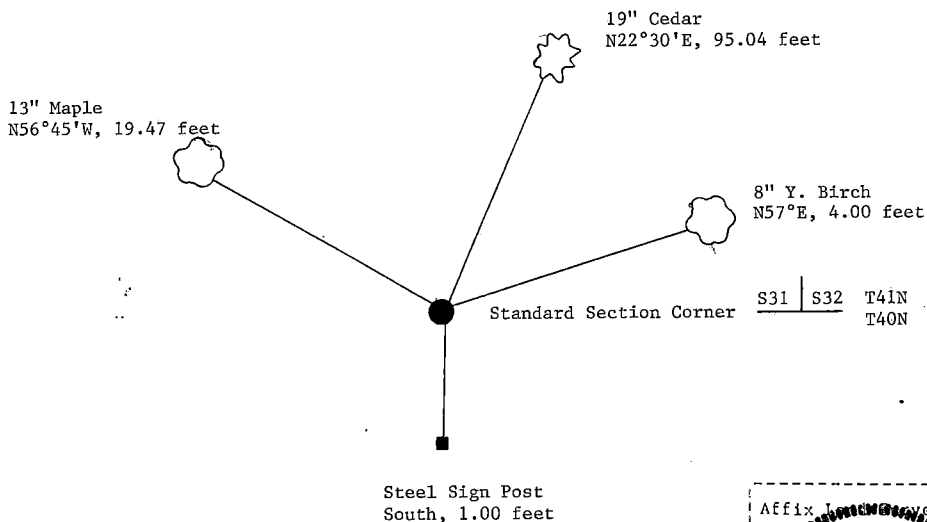
- (e) Describe any material discrepancy between the location of the corner as restored or reestablished and the location of that corner as previously restored or reestablished by distance and direction. Show the discrepancy on the plan view drawing under (d), above. Show the distances between the corner as previously restored or reestablished and (1) the corner as restored or reestablished, and (2) to at least 2 of the witness monuments shown on the drawing in (d), above.

See drawing below.

- (f) Was the corner restored through acceptance of (1) an obliterated evidence location, or, (2) a found perpetuated location?

Restored through acceptance of a found perpetuated location.

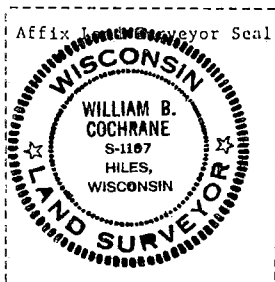
- (g&h) Was the corner reestablished through lost corner proportionate methods? If so, show the method, including the directions and distances to other public land survey corners used as evidence or used for proportioning in determining the corner location?



- (i) I, William B. Cochrane
(type or print name) certify that the corner location shown on this record was determined by me or under my direction and control and that this U.S. Public Land Survey Monument Record is correct and complete to the best of my knowledge and belief.

William B. Cochrane October 14, 1986
Signature Date

Certificate ready for filing: Edward J. [Signature] 3-9-87
District Ranger Date



Stock No. 26273

DOCUMENT NUMBER 132467

U.S. PUBLIC LAND SURVEY MONUMENT RECORD

Index No. Z-7

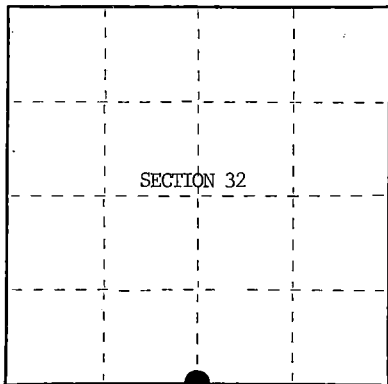
State of Wisconsin }
County of Forest } ss.

I, William B. Cochran, do hereby
certify that on the 23rd day
of July, 1986, I found
evidence of the Standard Quarter Section
corner of Section 32
Township 41, North, Range
14 East, Fourth Principal Meridian,
as described hereon; and that from this evidence
I established a new monument and accessories
as described hereon to perpetuate the original
location of this corner.

Resident witnesses:

David Brownell

Tony Tillman



○ = Corner monument restored.

History of original corner establishment:

Original Government Survey in 1858 by Artemas Curtis. Dependent Resurvey in 1945 by Hugh B. Crawford. East on the South side of Section 32, 39.65 chains, at proportionate distance, set an iron post, 3 feet long, 2 inches in dia., 27 inches in the ground, with a brass cap mkd; SC, 1/4, S32, 1945. From which the following bear;

Cedar	6"	S79°30'E	162 lks. (106.92 feet)
Balsam	8"	S 9°15'E	56 lks. (36.96 feet)

Description of corner evidence found:

Found monument as described and in place, from which the following bear;

Balsam	14"	S 9°15'E	36.96 feet
Cedar (Stump)		S79°30'E	106.92 feet

Description of monument and accessories I established to perpetuate the original location of this corner.

Blazed and scribed a new bearing tree;

R. Pine	10"	N22°E	31.35 feet
Steel Sign Post		South	1.00 feet

Dated at Hiles, Wis., this 25th day of September, 19 86.

Signature William B. Cochran Title Land Surveyor Registration No. S-1107
(County Surveyor, Registered Land Surveyor, or other duly authorized official)

Office of Register of Deeds, County of Forest, I hereby certify that the within
instrument was filed in this office for record on the 11th day of March, 19 87
at 3:30 clock P. M.

Paul Aschenbrenner
(Register of Deeds)

By _____ Deputy

44114320020

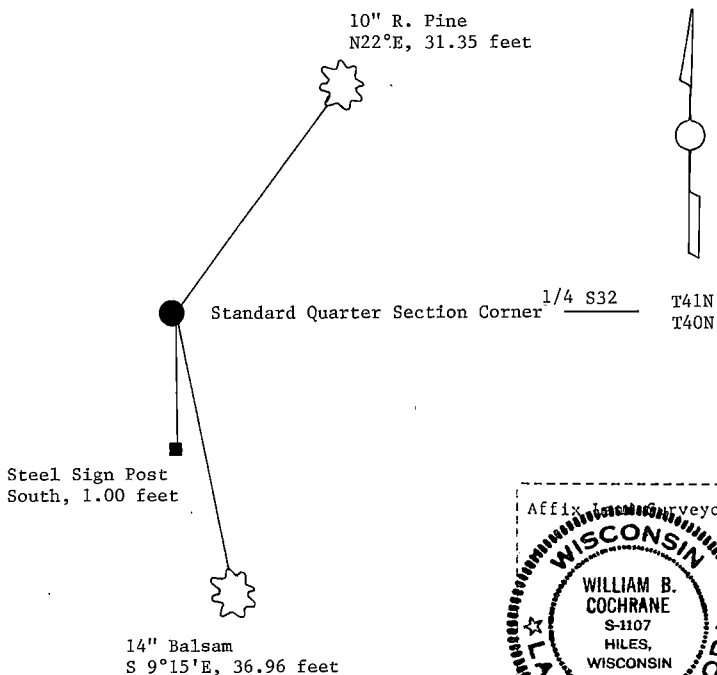
- (e) Describe any material discrepancy between the location of the corner as restored or reestablished and the location of that corner as previously restored or reestablished by distance and direction. Show the discrepancy on the plan view drawing under (d), above. Show the distances between the corner as previously restored or reestablished and (1) the corner as restored or reestablished, and (2) to at least 2 of the witness monuments shown on the drawing in (d), above.

See drawing below.

- (f) Was the corner restored through acceptance of (1) an obliterated evidence location, or, (2) a found perpetuated location?

Restored through acceptance of a found perpetuated location.

- (g&h) Was the corner reestablished through lost corner proportionate methods? If so, show the method, including the directions and distances to other public land survey corners used as evidence or used for proportioning in determining the corner location?



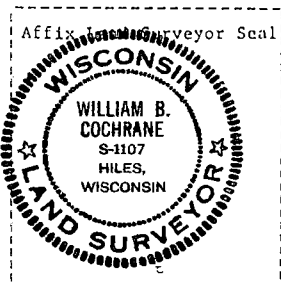
- (i) I, William B. Cochrane
(type or print name) certify that the corner location shown on this record was determined by me or under my direction and control and that this U.S. Public Land Survey Monument Record is correct and complete to the best of my knowledge and belief.

William B. Cochrane October 14, 1986
Signature Date

Certificate ready for filing: David D. [Signature]

District Ranger

3-9-87
Date



Stock No. 26273

DOCUMENT NUMBER 1322468

U.S. PUBLIC LAND SURVEY MONUMENT RECORD

Index No. Z-9

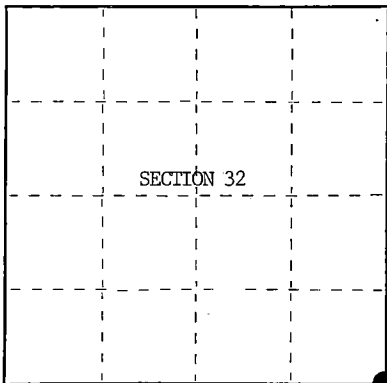
State of Wisconsin }
County of Forest ss.

I, William B. Cochran, do hereby certify that on the 23rd day of July, 1986, I found evidence of the Southeast Standard Section corner of Section 32 Township 41, North, Range 14 East, Fourth Principal Meridian, as described hereon; and that from this evidence I established a new monument and accessories as described hereon to perpetuate the original location of this corner.

Resident witnesses:

David Brownell

Tony Tillman



○ = Corner monument restored.

History of original corner establishment:

Original Government Survey in 1858 by Artemas Curtis. Dependent Resurvey in 1945 by Hugh B. Crawford. East on the South side of Section 32, 79.30 chains, the point for corner is determined from the remains of original bearing trees. At the corner point, set a concrete monument, 2 feet long, 6 inches in dia., 18 inches in the ground, with an iron post in center, and a brass cap mkd; SC, T41N, R14E, S32, S33, 1945. From which the following bear;

Y. Birch	22"	N29°00'E	107 lks. (70.62 feet)
Maple	12"	N43°45'W	79 lks. (52.14 feet)
Cedar Post	5"	N 3°00'W	4 lks. (2.64 feet)

Description of corner evidence found:

Found monument as described and in place, from which the following bear;

Y. Birch	25"	N29°00'E	70.62 feet
Maple	16"	N43°45'W	52.14 feet
Cedar Post	5"	N 3°00'W	2.64 feet

Description of monument and accessories I established to perpetuate the original location of this corner.

None

Dated at Hiles Wis., this 1st day of October, 19 86.

Signature William B. Cochran Title Land Surveyor Registration No. S-1107
(County Surveyor, Registered Land Surveyor, or other duly authorized official)

Office of Register of Deeds, County of Forest. I hereby certify that the within instrument was filed in this office for record on the 11th day of March, 19 87 at 3:30 o'clock P. M.

Paul Aschenbrenner
(Register of Deeds)

By _____ Deputy

4411432-0000

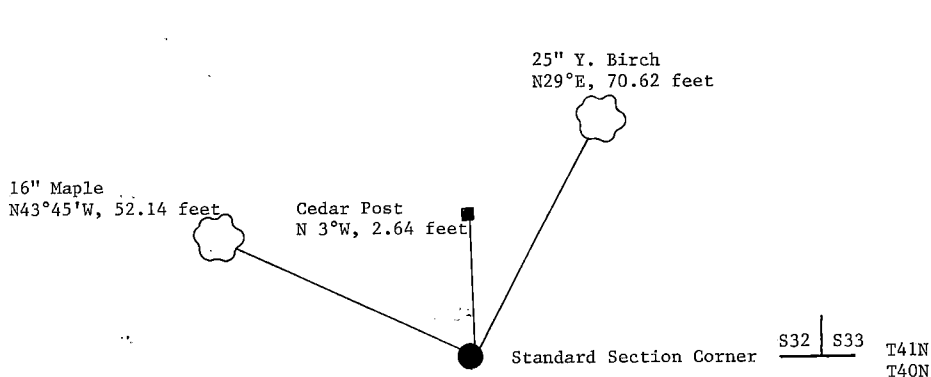
- (e) Describe any material discrepancy between the location of the corner as restored or reestablished and the location of that corner as previously restored or reestablished by distance and direction. Show the discrepancy on the plan view drawing under (d), above. Show the distances between the corner as previously restored or reestablished and (1) the corner as restored or reestablished, and (2) to at least 2 of the witness monuments shown on the drawing in (d), above.

See drawing below.

- (f) Was the corner restored through acceptance of (1) an obliterated evidence location, or, (2) a found perpetuated location?

Restored through acceptance of a found perpetuated location.

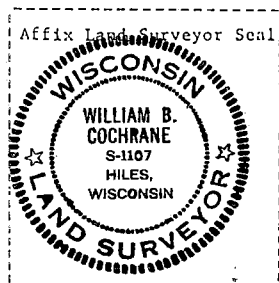
- (g&h) Was the corner reestablished through lost corner proportionate methods? If so, show the method, including the directions and distances to other public land survey corners used as evidence, or used for proportioning in determining the corner location?



(i)

- (i) I, William B. Cochrane
(type or print name) certify that the corner location shown on this record was determined by me or under my direction and control and that this U.S. Public Land Survey Monument Record is correct and complete to the best of my knowledge and belief.

William B. Cochrane October 14, 1986
Signature Date



Certificate ready for filing: [Signature] 3-9-87
District Ranger Date

Stock No. 26273

DOCUMENT NUMBER 132469

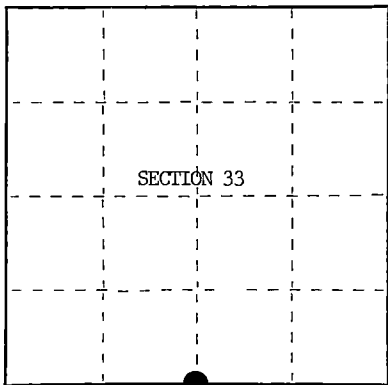
U.S. PUBLIC LAND SURVEY MONUMENT RECORD

Index No. Z-11

State of Wisconsin }
County of Forest } ss.

I, William B. Cochran, do hereby
certify that on the 18th day
of November, 1982, I found
evidence of the Standard Quarter Section
corner of Section 33
Township 41, North, Range
14 East, Fourth Principal Meridian,
as described hereon; and that from this evidence
I established a new monument and accessories
as described hereon to perpetuate the original
location of this corner.

Resident witnesses:

David BrownellTony Tillman

○ = Corner monument restored.

History of original corner establishment:

Original Government Survey in 1858 by Artemas Curtis. Dependent Resurvey in 1945 by Hugh B. Crawford. East on the South side of Section 33, 39.73 chains, the point for corner is determined from the remains of an original bearing tree. At the corner point, set a concrete monument, 3 feet long, 4 inches in dia., 27 inches in the ground, with an iron post in center, and a brass cap mkd; SC, 1/4, S33, 1945. From which the following bear;

W. Pine	16"	N63°30'E	73 lks. (48.18 feet)
Tamarack	4"	N40°30'W	27½ lks. (18.15 feet)

Description of corner evidence found:

Found monument with concrete loose, from which the following bear;

W. Pine (Dead)	21"	N63°30'E	48.18 feet
Tamarack	8"	N40°30'W	18.15 feet

Description of monument and accessories I established to perpetuate the original location of this corner.

Replaced damaged monument with a 2½ inch diameter aluminum pipe monument, 5 feet long, 4 feet in the ground, with an aluminum cap stamped; T41N R14E, SC, 1/4, S33, 1982, S-1107. From which the following new blazed and scribed bearing tree bears;

Tamarack	10"	N22°E	24.95 feet
Fiberglass Sign Post	SE		1.00 feet

Dated at Hiles, Wis., this 2nd day of October, 1986.Signature William B. Cochran Title Land Surveyor Registration No. S-1107
(County Surveyor, Registered Land Surveyor, or other duly authorized official)

Office of Register of Deeds, County of Forest, I hereby certify that the within
instrument was filed in this office for record on the 11th day of March, 1987.
at 3:30 o'clock P. M.

Paul Aschewanner
(Register of Deeds)

By _____ Deputy

44114 33 p2p

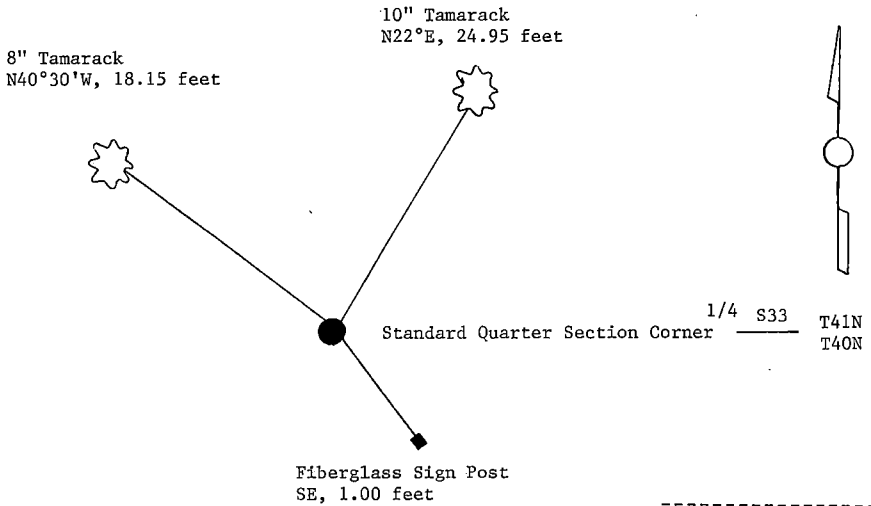
(e) Describe any material discrepancy between the location of the corner as restored or reestablished and the location of that corner as previously restored or reestablished by distance and direction. Show the discrepancy on the plan view drawing under (d), above. Show the distances between the corner as previously restored or reestablished and (1) the corner as restored or reestablished, and (2) to at least 2 of the witness monuments shown on the drawing in (d), above.

See drawing below.

(f) Was the corner restored through acceptance of (1) an obliterated evidence location, or, (2) a found perpetuated location?

Restored through acceptance of a found perpetuated location.

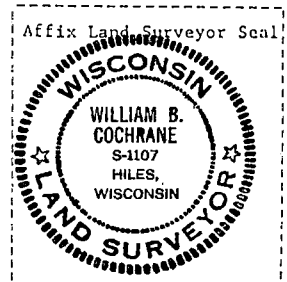
(g&h) Was the corner reestablished through lost corner proportionate methods? If so, show the method, including the directions and distances to other public land survey corners used as evidence or used for proportioning in determining the corner location?



(i) I, William B. Cochrane
(Type or print name) certify that the corner location shown on this record was determined by me or under my direction and control and that this U.S. Public Land Survey Monument Record is correct and complete to the best of my knowledge and belief.

William B. Cochrane October 14, 1986
Signature Date

Certificate ready for filing: [Signature] 3-9-87
District Ranger Date



CERTIFIED LAND CORNER RESTORATION

State of Wisconsin

County of Forest

ss.

I Jean F. Resvick, do hereby certify that on the 23 day of October, 1978, I found evidence of the Southeast Section corner of Section 33 Township 41 North Range 14 East, Fourth Principal Meridian, as described hereon; and that from this evidence I established a new monument and accessories as described hereon to perpetuate the original location of this corner:

Description of original monument and accessories and subsequent restorations:

Surveyed in 1858 by Artemas Curtis
Dependent resurvey in 1945 by H.B. Crawford
Proportional distance set an iron post, 3 feet long, 2 inch diameter, 27 inches in ground with brass cap marked: S.C., T41N, R14E, S33, S34, 1945
Poplar 9, N26E, 30 lks.
Elm 6, N12 1/4W, 59 1/2 lks.

Description of corner evidence found:

Monument as described
Poplar, fallen, rotted off, scribed, 19.80 feet
Elm 10, N12W, 39.3 feet, dead
Elm 7, N59W, 16.1 feet, dead
Elm 5, N37E, 49.4 feet, dead

Description of ~~monument~~ and accessories I established to perpetuate the location of this corner:

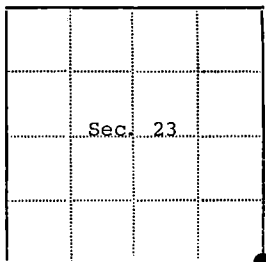
Blazed and scribed the following new bearing trees:

Maple 7, N10E, 21.41 feet

Maple 6, N23W, 24.05 feet

Set steel sign post 0.5 feet west of monument

44114230000



Resident witnesses.....

Dated at Rhineland Wisconsin, this 2 day of November, 1978.Signature Jean F. Resvick Title Land Surveyor
(County Surveyor, Registered Land Surveyor, or other duly authorized official)Surveyors Registration No. S-802 DOCUMENT NUMBER 115182Office of REGISTER OF DEEDS County of FOREST

I hereby certify that the within instrument was filed in this office for record on the 27th day of November, 1978, and was filed in Book No. Page No. of County Records.

Signature Eugene Stangorff Title Register of DeedsTownship 41 North, Range 14 East, Section 33, Index No. Z-13, Page No.

213

Stock No. 26273

DOCUMENT NUMBER 132470

U.S. PUBLIC LAND SURVEY MONUMENT RECORD

Index No. Z-15

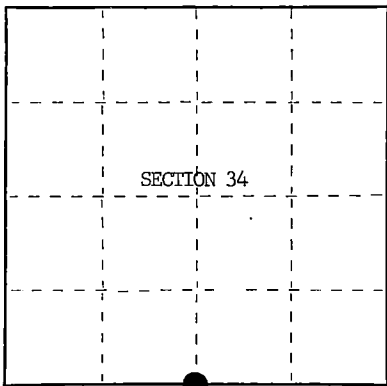
State of Wisconsin }
County of Forest } ss.

I, William B. Cochran, do hereby certify that on the 23rd day of July, 1986, I found evidence of the Standard Quarter Section corner of Section 34 Township 41 North, Range 14 East, Fourth Principal Meridian, as described hereon; and that from this evidence I established a new monument and accessories as described hereon to perpetuate the original location of this corner.

Resident witnesses:

David Brownell

Tony Tillman



○ = Corner monument restored.

History of original corner establishment:

Original Government Survey in 1858 by Artemas Curtis. Dependent Resurvey in 1945 by Hugh B. Crawford. East on the South side of Section 34, 39.70 chains, restored the corner position from original bearing tree evidence. Set a concrete monument, 3 feet long, 4 inches in dia., 28 inches in the ground, with an iron post in center, and a brass cap mkd; SC, 1/4, S34, 1945. From which the following bear;
Cedar 6" N78°15'W 49 lks.(32.34 feet)
Cedar 8" S79°15'E 44½ lks.(29.37 feet)

Description of corner evidence found:

Found monument as described and in place, from which the following bear;

Cedar	12"	N78°15'W	32.34 feet
Cedar	12"	S79°15'E	29.37 feet

Description of monument and accessories I established to perpetuate the original location of this corner.

Steel Sign Post	SE	0.50 feet
-----------------	----	-----------

Dated at Hiles, Wis., this 25th day of September, 19 86

Signature William B. Cochran Title Land Surveyor Registration No. S-1107
(County Surveyor, Registered Land Surveyor, or other duly authorized official)

Office of Register of Deeds, County of Forest, I hereby certify that the within instrument was filed in this office for record on the 11th day of March, 19 87 at 3:30 o'clock P. M.

Paul Acklenhauer
(Register of Deeds)

By _____ Deputy

44114340020

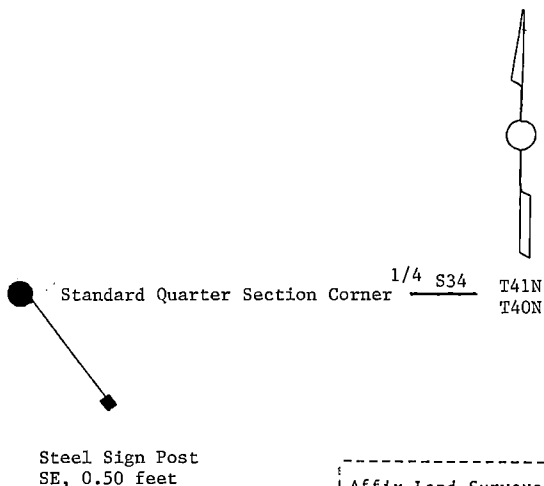
- (e) Describe any material discrepancy between the location of the corner as restored or reestablished and the location of that corner as previously restored or reestablished by distance and direction. Show the discrepancy on the plan view drawing under (d), above. Show the distances between the corner as previously restored or reestablished and (1) the corner as restored or reestablished, and (2) to at least 2 of the witness monuments shown on the drawing in (d), above.

See drawing below.

- (f) Was the corner restored through acceptance of (1) an obliterated evidence location, or, (2) a found perpetuated location?

Restored through acceptance of a found perpetuated location.

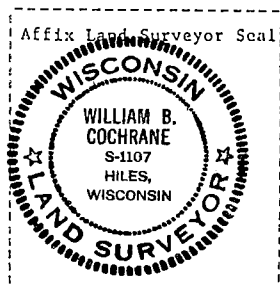
- (g&h) Was the corner reestablished through lost corner proportionate methods? If so, show the method, including the directions and distances to other public land survey corners used as evidence or used for proportioning in determining the corner location?



- (i) I, William B. Cochrane
(Type or print name) certify that the corner location shown on this record was determined by me or under my direction and control and that this U.S. Public Land Survey Monument Record is correct and complete to the best of my knowledge and belief.

William B. Cochrane
Signature

October 14, 1986
Date



Certificate ready for filing:

Charles Dwyer
District Ranger

3-9-87
Date

Stock No. 26273

DOCUMENT NUMBER 132471

U.S. PUBLIC LAND SURVEY MONUMENT RECORD

Index No. Z-17

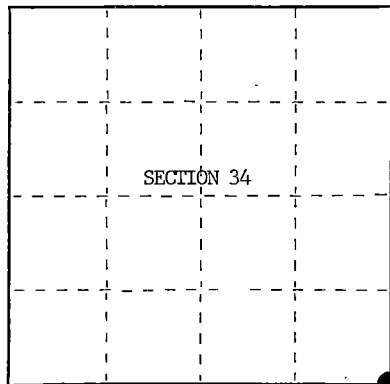
State of Wisconsin }
 County of Forest } ss.

I, William B. Cochran, do hereby certify that on the 23rd day of July, 1986, I found evidence of the Southeast Standard Section corner of Section 34 Township 41 North, Range 14 East, Fourth Principal Meridian, as described hereon; and that from this evidence I established a new monument and accessories as described hereon to perpetuate the original location of this corner.

Resident witnesses:

David Brownell

Tony Tillman



O = Corner monument restored.

History of original corner establishment:

Original Government Survey in 1858 by Artemas Curtis. Dependent Resurvey in 1945 by Hugh B. Crawford. East on the South side of Section 34, 39.65 chains, the point for corner is determined from the remains of original bearing trees. At the corner point, set a concrete monument, 3 feet long, 5 inches dia., 27 inches in the ground, with an iron post in center, and a brass cap mkd; SC, T41N, R14E, S34, S35, 1945.

From which the following bear;

Cedar	8"	N42°15'E	86 lks.(56.76 feet)
-------	----	----------	---------------------

Tamarack	5"	N42°15'W	63 lks.(41.58 feet)
----------	----	----------	---------------------

Description of corner evidence found:

Found monument as described and in place, from which the following bear;

Cedar	14"	N42°15'E	56.76 feet
-------	-----	----------	------------

Tamarack	12"	N42°15'W	41.58 feet
----------	-----	----------	------------

Description of monument and accessories I established to perpetuate the original location of this corner.

Steel Sign Post	North	1.00 feet
-----------------	-------	-----------

Dated at Hiles, Wis., this 1st day of October, 1986

Signature William B. Cochran Title Land Surveyor Registration No. S-1107
 (County Surveyor, Registered Land Surveyor, or other duly authorized official)

Office of Register of Deeds, County of Forest, I hereby certify that the within instrument was filed in this office for record on the 11th day of March, 1987 at 3:30 o'clock P. M.

Paul A. Schaeffer
 (Register of Deeds)

By Deputy

44114390000

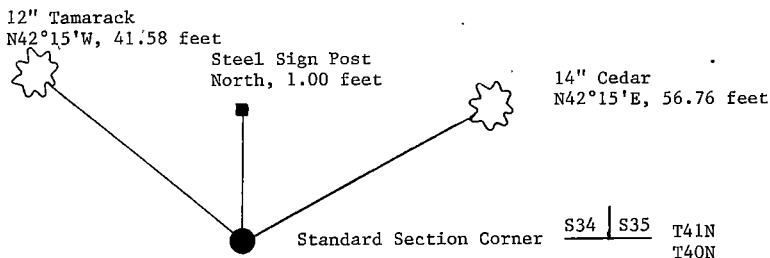
- (e) Describe any material discrepancy between the location of the corner as restored or reestablished and the location of that corner as previously restored or reestablished by distance and direction. Show the discrepancy on the plan view drawing under (d), above. Show the distances between the corner as previously restored or reestablished and (1) the corner as restored or reestablished, and (2) to at least 2 of the witness monuments shown on the drawing in (d), above.

See drawing below.

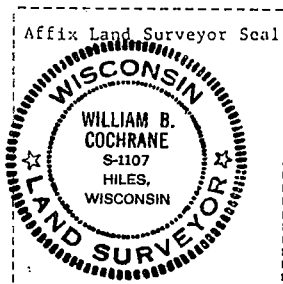
- (f) Was the corner restored through acceptance of (1) an obliterated evidence location, or, (2) a found perpetuated location?

Restored through acceptance of a found perpetuated location.

- (g&h) Was the corner reestablished through lost corner proportionate methods? If so, show the method, including the directions and distances to other public land survey corners used as evidence or used for proportioning in determining the corner location?



- (i) I, William B. Cochrane
(Type or print name) certify that the corner location shown on this record was determined by me or under my direction and control and that this U.S. Public Land Survey Monument Record is correct and complete to the best of my knowledge and belief.



William B. Cochrane October 14, 1986
Signature Date

Certificate ready for filing: Steve Langer 3-9-87
District Ranger Date

CERTIFIED LAND CORNER RESTORATION

State of Wisconsin

County of Forest

ss.

I William B. Cochrane, do hereby certify that on the 19 day of April, 1977, I found evidence of the Standard Quarter corner of Section 35 Township 41 North Range 14 East, Fourth Principal Meridian, as described hereon; and that from this evidence I established a new monument and accessories as described hereon to perpetuate the original location of this corner:

Description of original monument and accessories and subsequent restorations:

Surveyed in 1858 by Artemas Curtis.
Dependent Resurvey in 1945 by H.B. Crawford
From original evidence set a concrete monument 3 feet long, 4 inch diameter with a brass cap stamped: SC, 1/4, S35, 1945
Spruce, 4", N29°15'E, 54 lks.
Tamarack, 4", N59°30'W, 148 lks.

Description of corner evidence found:

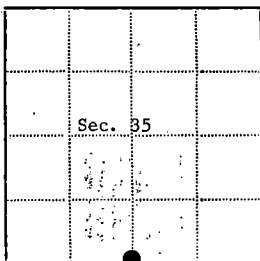
Standard 1/4 corner as described. The concrete is rotting away from the iron pipe and brass cap.
Spruce, 6", (dead) N30°E, 35.6 feet
Tamarack, 5", N59°W, 97.7 feet

Description of monument and accessories I established to perpetuate the location of this corner:

Blazed and scribed the following new bearing trees:
Tamarack, 5", N37°E, 36.17 feet
Tamarack, 5", N83°W, 54.20 feet
Set a steel sign post North, 0.50 ft.



44114350020



● - Corner monument restored



Resident witnesses.....

Dated at Laona Wisconsin, this 20 day of July 1977.

Signature William B. Cochrane Title Survey Technician
(County Surveyor, Registered Land Surveyor, or other duly authorized official)

Surveyors Registration No. S-1107 DOCUMENT NUMBER 113319

Office of Register of Deeds County of Forest

I hereby certify that the within instrument was filed in this office for record on the 13th day of February 1978, and was filed in Book No. _____ Page No. _____ of County Records.

Signature Eugen Stutzman Title Register of Deeds

Township 41 North Range 14 East Section 35 Index No. Z-19 Page No. _____

U.S. PUBLIC LAND SURVEY MONUMENT RECORD

Index No. Z-21

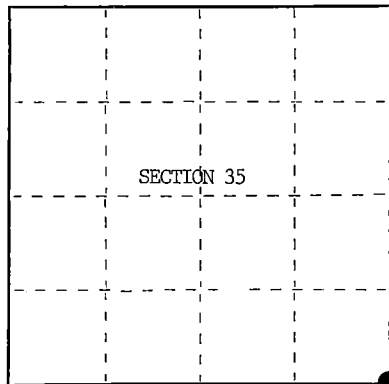
State of Wisconsin }
County of Forest } ss.

I, William B. Cochrane, do hereby certify that on the 3rd day of February, 1986, I found evidence of the Southeast Standard Section corner of Section 35 Township 41, North, Range 14 East, Fourth Principal Meridian, as described hereon; and that from this evidence I established a new monument and accessories as described hereon to perpetuate the original location of this corner.

Resident witnesses:

David Brownell

Tony Tillman



○ = Corner monument restored.

History of original corner establishment:

Original Government Survey in 1858 by Artemas Curtis. Dependent Resurvey in 1945 by Hugh Crawford. N89°49'E, 39.74 chs., on the South side of Section 35, set the point for the Standard Corner of Sections 35 and 36, at proportionate distance. At the corner position, set an iron post, 3 feet long, 2 inches in diam., 27 inches in the ground, with a brass cap marked; T41N, R14E, S.C.; S35, S36, 1945. From which the following bear;

Poplar	7"	N48°E	6 lks.
Spruce	5"	N46°W	32½ lks.

Description of corner evidence found:

Found monument as described and in place, from which the following bears;

Spruce (Stump)	N46°W	6 lks. (10.31 feet)
Steel Sign Post	East	0.50 feet

Description of monument and accessories I established to perpetuate the original location of this corner.

Blazed and scribed the following new bearing trees;

Spruce	9"	N25°E	7.63 feet
Spruce	13"	S78°W	11.44 feet

Dated at Hiles, Wis., this 20th day of March, 1986.

Signature William B. Cochrane Title Land Surveyor Registration No. S-1107
(County Surveyor, Registered Land Surveyor, or other duly authorized official)

Office of Register of Deeds, County of Forest, I hereby certify that the within instrument was filed in this office for record on the 11th day of March, 1987 at 3:30 o'clock P. M.

Paul Archendronner
(Register of Deeds)

By _____ Deputy

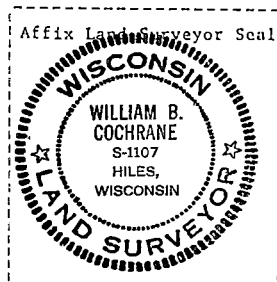
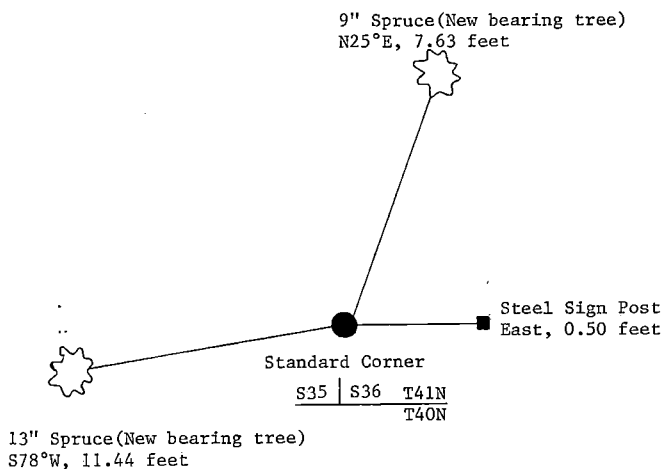
- (e) Describe any material discrepancy between the location of the corner as restored or reestablished and the location of that corner as previously restored or reestablished by distance and direction. Show the discrepancy on the plan view drawing under (d), above. Show the distances between the corner as previously restored or reestablished and (1) the corner as restored or reestablished, and (2) to at least 2 of the witness monuments shown on the drawing in (d), above.

See drawing below.

- (f) Was the corner restored through acceptance of (1) an obliterated evidence location, or, (2) a found perpetuated location?

Restored through acceptance of a found perpetuated location.

- (g&h) Was the corner reestablished through lost corner proportionate methods? If so, show the method, including the directions and distances to other public land survey corners used as evidence or used for proportioning in determining the corner location?



- (i) I, William B. Cochrane
[Type or print name] certify that the corner location shown on this record was determined by me or under my direction and control and that this U.S. Public Land Survey Monument Record is correct and complete to the best of my knowledge and belief.

William B. Cochrane October 8, 1986
Signature Date

Certificate ready for filing: [Signature] 3-9-87
District Ranger Date

U.S. PUBLIC LAND SURVEY MONUMENT RECORD

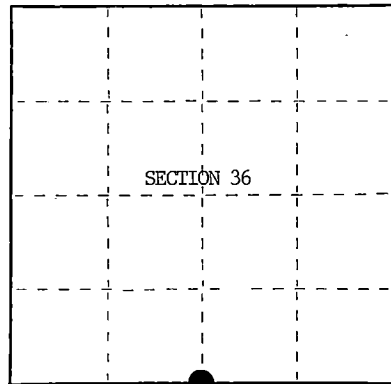
Index No. Z-23

State of Wisconsin }
County of Forest } ss.

I, William R. Cochran, do hereby certify that on the 29th day of July, 1986, I found evidence of the Standard Quarter Section corner of Section 36 Township 41, North, Range 14 East, Fourth Principal Meridian, as described hereon; and that from this evidence I established a new monument and accessories as described hereon to perpetuate the original location of this corner.

Resident witnesses:

Tony Tillman



○ = Corner monument restored.

History of original corner establishment:

Original Government Survey in 1858 by Artemas Curtis. Dependent Resurvey in 1945 by Hugh B. Crawford. East on the South side of Section 36, 39.74 chains, at proportionate distance, set a concrete monument, 3 feet long, 4 inches dia., 28 inches in the ground, with an iron post in center, and a brass cap mkd; SC, 1/4, S36, 1945. From which the following bear;

Poplar	4"	N 9°30'E	123½ lks. (81.51 feet)
Poplar	4"	N37°00'W	141½ lks. (93.39 feet)
4"x4"x32" Cedar Post		S52°30'E	127 lks. (83.82 feet)

Description of corner evidence found:

Found monument as described and in place, from which the following bear;

Poplar (Stump)	N 9°30'E	81.51 feet
Poplar (Stump)	N37°00'W	93.39 feet
4"x4"x32" Cedar Post	S52°30'E	83.82 feet

Description of monument and accessories I established to perpetuate the original location of this corner.

No bearing trees available.

See reverse side for reference to the NW Section Corner of Section 1, T40N R14E.

Dated at Hiles, Wis., this 8th day of October, 19 86

Signature William B. Cochran Title Land Surveyor Registration No. S-1107
(County Surveyor, Registered Land Surveyor, or other duly authorized official)

Office of Register of Deeds, County of Forest, I hereby certify that the within instrument was filed in this office for record on the 11th day of March, 19 87 at 3:30 o'clock P. M.

Paul Aschenbrenner
(Register of Deeds)

By _____ Deputy

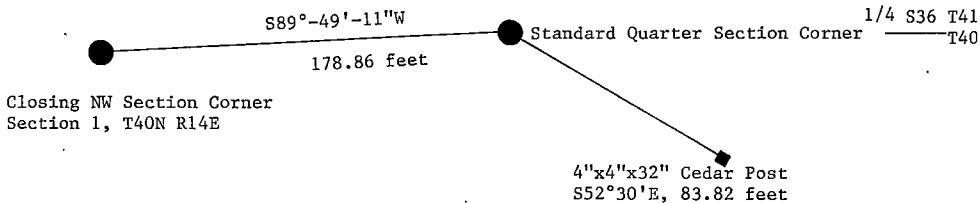
- (e) Describe any material discrepancy between the location of the corner as restored or reestablished and the location of that corner as previously restored or reestablished by distance and direction. Show the discrepancy on the plan view drawing under (d), above. Show the distances between the corner as previously restored or reestablished and (1) the corner as restored or reestablished, and (2) to at least 2 of the witness monuments shown on the drawing in (d), above.

See drawing below.

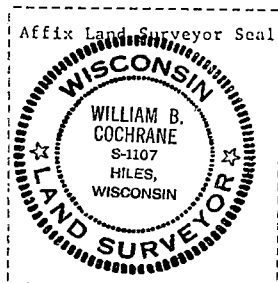
- (f) Was the corner restored through acceptance of (1) an obliterated evidence location, or, (2) a found perpetuated location?

Restored through acceptance of a found perpetuated location.

- (g&h) Was the corner reestablished through lost corner proportionate methods? If so, show the method, including the directions and distances to other public land survey corners used as evidence or used for proportioning in determining the corner location?



607



- (i) I, William B. Cochrane
(Type or print name) certify that the corner location shown on this record was determined by me or under my direction and control and that this U.S. Public Land Survey Monument Record is correct and complete to the best of my knowledge and belief.

William B. Cochrane October 8, 1986
Signature Date

Certificate ready for filing: Edward Joseph 3-9-87
District Ranger Date

U.S. PUBLIC LAND SURVEY MONUMENT RECORD

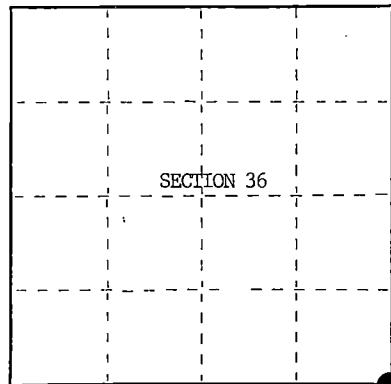
Index No. Z-25

State of Wisconsin }
County of Forest } ss.

I, William B. Cochrane, do hereby certify that on the 23rd day of August, 1984, I found evidence of the Southeast Standard Section corner of Section 36 Township 41, North, Range 14 East, Fourth Principal Meridian, as described hereon; and that from this evidence I established a new monument and accessories as described hereon to perpetuate the original location of this corner.

Resident witnesses:

Tony Tillman



○ = Corner monument restored.

History of original corner establishment:

Original Government Survey in 1858 by Artemas Curtis. Dependent Resurvey in 1945 by Hugh Crawford. East on the South side of Section 36, 79.48 chains, set a 6" diameter concrete monument, 2 feet long, 1½ feet in the ground, with a brass cap mkd; S.C., T41N, R14E, R15E, S36, S31, 1945. From which the following bear;

Poplar	5"	N21°00'E	21 lks.
Poplar	6"	N31°30"W	20 lks.

Description of corner evidence found:

Monument as described and in place.

Description of monument and accessories I established to perpetuate the original location of this corner.

Blazed and scribed the following new bearing trees;

Spruce	12"	N88°E	37.40 feet
Spruce	7"	N32°W	24.83 feet
Steel Sign Post		NW	0.50 feet

Dated at Hiles, Wis., this 23rd day of December, 1985

Signature William B. Cochrane Title Land Surveyor Registration No. S-1107
(County Surveyor, Registered Land Surveyor, or other duly authorized official)

Office of Register of Deeds, County of Forest, I hereby certify that the within instrument was filed in this office for record on the 11th day of March, 1987 at 3:30 o'clock P. M.

Paul Achenbrenner
(Register of Deeds)

By _____ Deputy

FORM NO. 985-A
U.S. GOVERNMENT PRINTING OFFICE: 1975

Stock No. 26273

DOCUMENT NUMBER 132474

44114360000

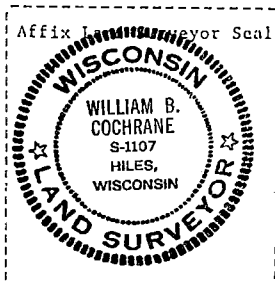
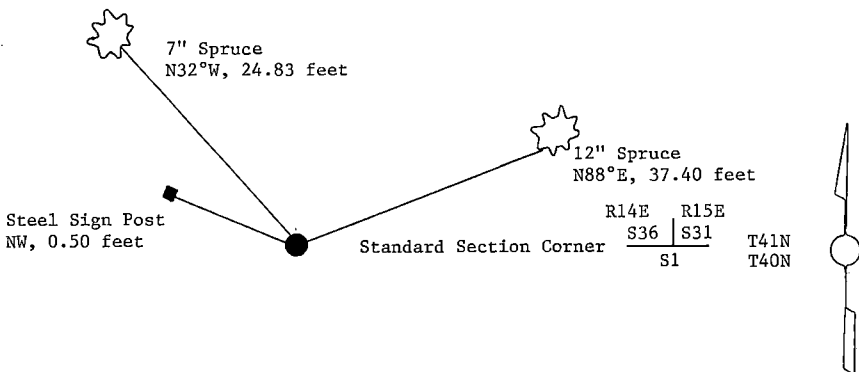
- (e) Describe any material discrepancy between the location of the corner as restored or reestablished and the location of that corner as previously restored or reestablished by distance and direction. Show the discrepancy on the plan view drawing under (d), above. Show the distances between the corner as previously restored or reestablished and (1) the corner as restored or reestablished, and (2) to at least 2 of the witness monuments shown on the drawing in (d), above.

See drawing below.

- (f) Was the corner restored through acceptance of (1) an obliterated evidence location, or, (2) a found perpetuated location?

Restored through acceptance of a found perpetuated location.

- (g&h) Was the corner reestablished through lost corner proportionate methods? If so, show the method, including the directions and distances to other public land survey corners used as evidence or used for proportioning in determining the corner location?



- (i) I, William B. Cochrane
[Type or print name] certify that the corner location shown on this record was determined by me or under my direction and control and that this U.S. Public Land Survey Monument Record is correct and complete to the best of my knowledge and belief.

William B. Cochrane October 8, 1986
Signature Date

Certificate ready for filing:

[Signature]
District Ranger

3-9-87
Date