

FED. ROAD DIST. NO.	STATE	STATE PROJ. NO.	SHEET NO.	TOTAL SHEETS
4	WIS	7148	4	

DIVISION JOB NO. 7148

STATION 4+21 BEG. OF RELOCATION ORDER
DIV. JOB NO. 7148

S.T.H. 32 TO THREE LAKES

① SW-SW
P.I. 7+50.6
Δ 10° 00' R
D 2
L 500'
T 250.6'
R 2864.9'

④
P.I. 31+04.7
Δ 57° 48' L
D 25
T 1265.3
L 2312.0'
R 2242.0'

STATION 122+00 END OF STATE PROJECT NO. 7148

STATION 146+90 END OF RELOCATION ORDER DIV. JOB NO. 7148

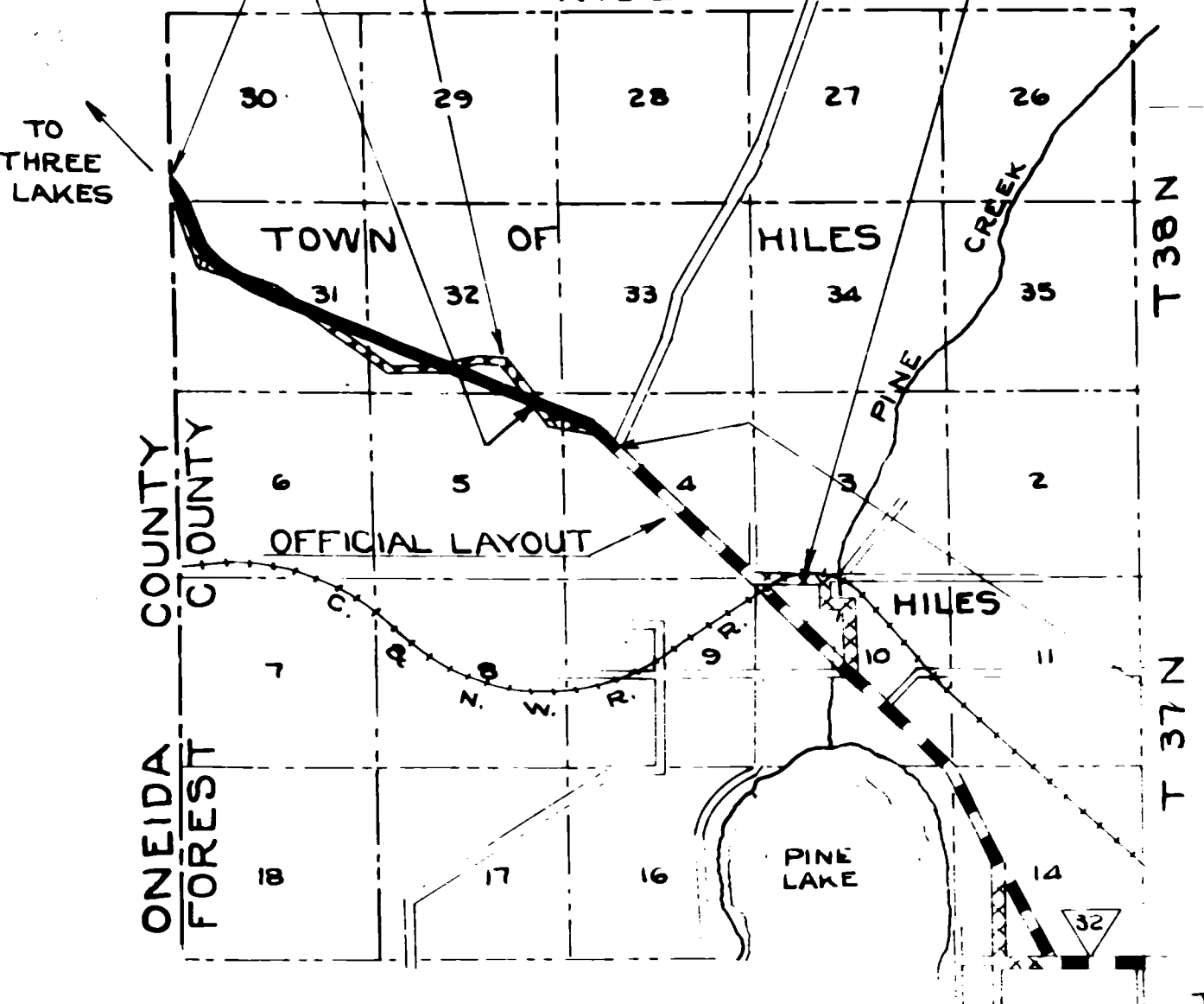
STATION 122+00 END OF STATE PROJECT NO. 7148

STA. 4+21 BEG. RELOCATION ORDER DIV. JOB NO. 7148

OFFICIAL MAINTAINED DETOUR PRESENT TRAVELED HIGHWAY

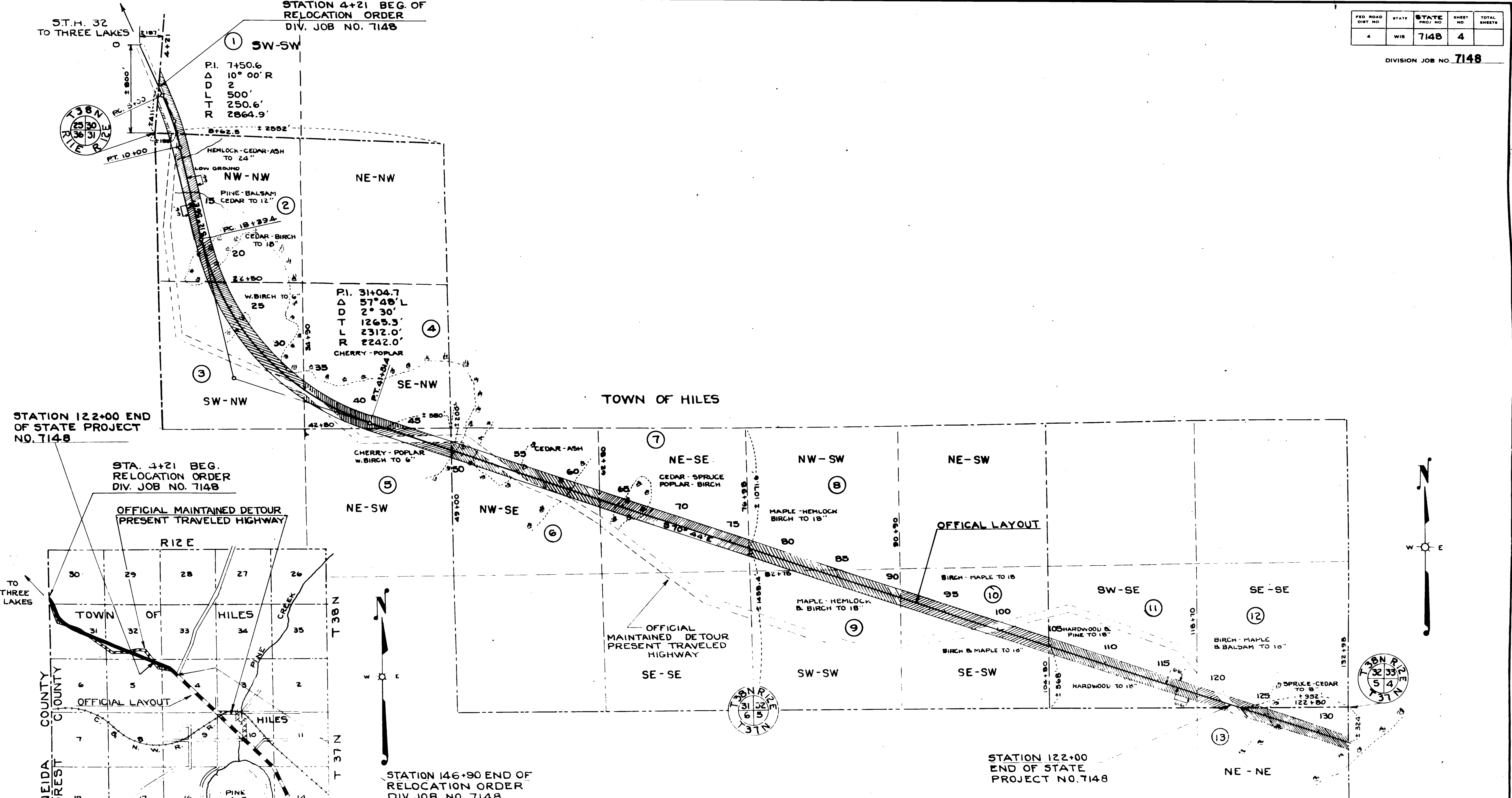
OFFICIAL LAYOUT

OFFICIAL MAINTAINED DETOUR PRESENT TRAVELED HIGHWAY

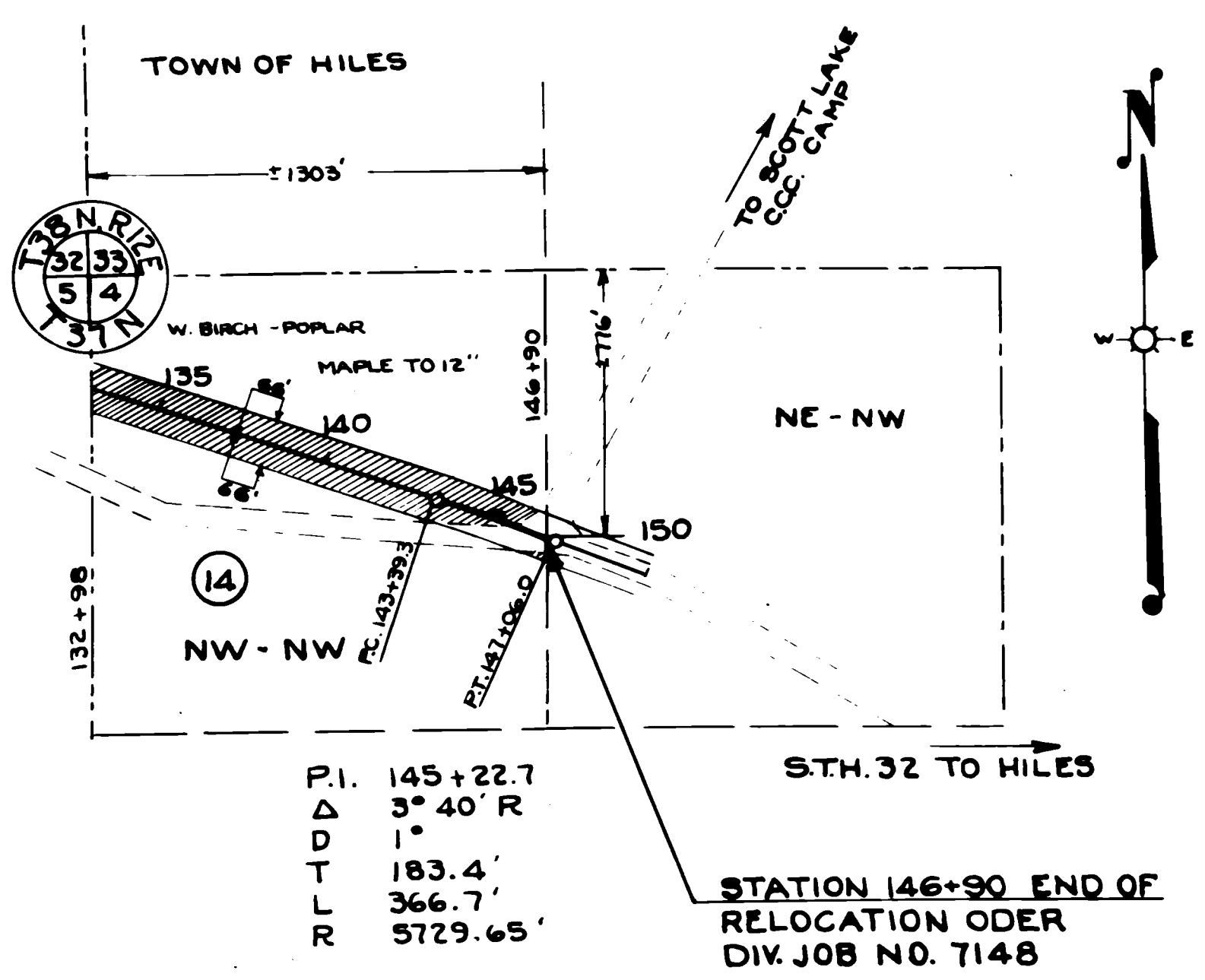


LOCATION SKETCH
SCALE 0 1 MILE

PLAT OF RIGHT OF WAY REQUIRED
DIVISION JOB NO. 7148
ONEIDA COUNTY LINE - HILES ROAD
S. T. H. NO. 32 FOREST COUNTY
SCALE 0 400 800'



SCHEDULE OF R/W REQUIRED					
PAR.	OWNER	ADDRESS	DESCRIPTION	ACRES	PAR.
1	UNITED STATES OF AMERICA	WASHINGTON D. C.	SW 1/4 - SW 1/4 - SEC. 30, TWP. 38 N, R 12 E	.73	1
2	"	"	NW 1/4 - NW 1/4 - " " " " " "	4.02	2
3	"	"	SW 1/4 - NW 1/4 - " " " " " "	3.45	3
4	"	"	SE 1/4 - NW 1/4 - " " " " " "	1.67	4
5	"	"	NE 1/4 - SW 1/4 - " " " " " "	1.32	5
6	"	"	NW 1/4 - SE 1/4 - " " " " " "	3.60	6
7	"	"	NE 1/4 - SE 1/4 - " " " " " "	4.30	7
8	"	"	NW 1/4 - SW 1/4 - SEC. 32, TWP. 38 N, R 12 E.	1.75	8
9	"	"	SW 1/4 - SW 1/4 - " " " " " "	2.47	9
10	"	"	SE 1/4 - SW 1/4 - " " " " " "	3.85	10
11	"	"	SW 1/4 - SE 1/4 - " " " " " "	4.21	11
12	"	"	SE 1/4 - SE 1/4 - " " " " " "	1.21	12
13	"	"	NE 1/4 - NE 1/4 - SEC. 5, TWP. 37 N, R 12 E.	2.92	13
14	"	"	NW 1/4 - NW 1/4 - SEC. 4, " " " "	3.79	14
TOTAL				39.32	



PLAT OF RIGHT OF WAY REQUIRED
 DIVISION JOB NO. 7148
 ONEIDA COUNTY LINE - HILES ROAD
 S. T. H. NO. 32 FOREST COUNTY

SCALE
 0 400' 800'

DRAWN BY F.F.B.
 COMP. BY F.F.B.
 CHECKED BY M.B.B.