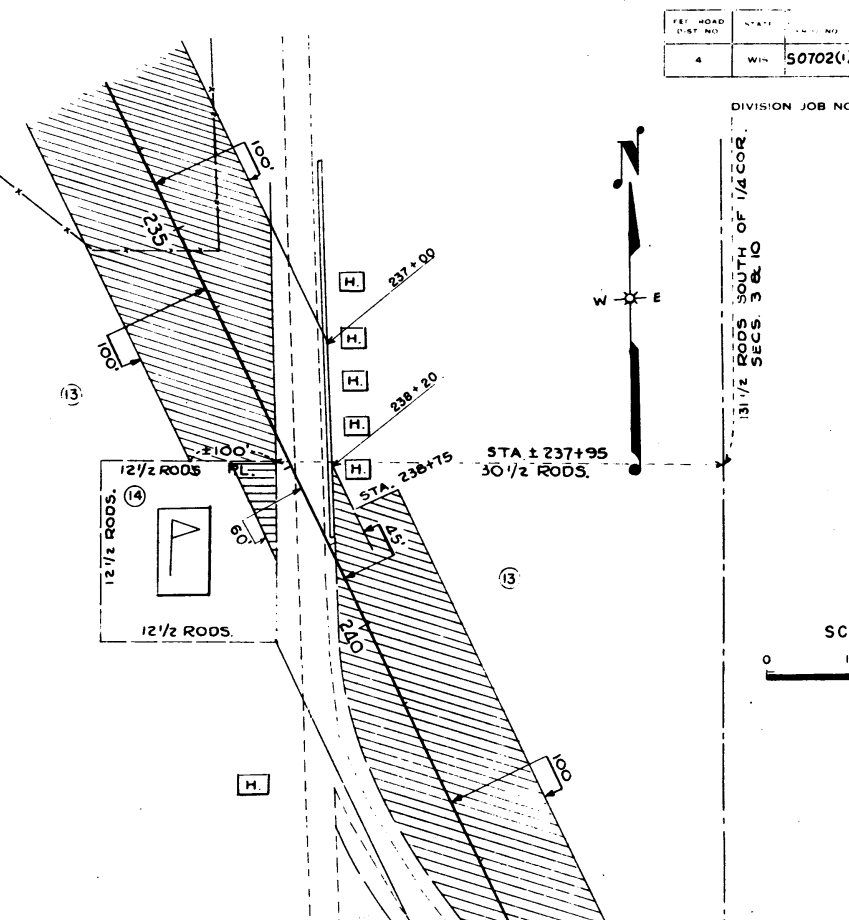
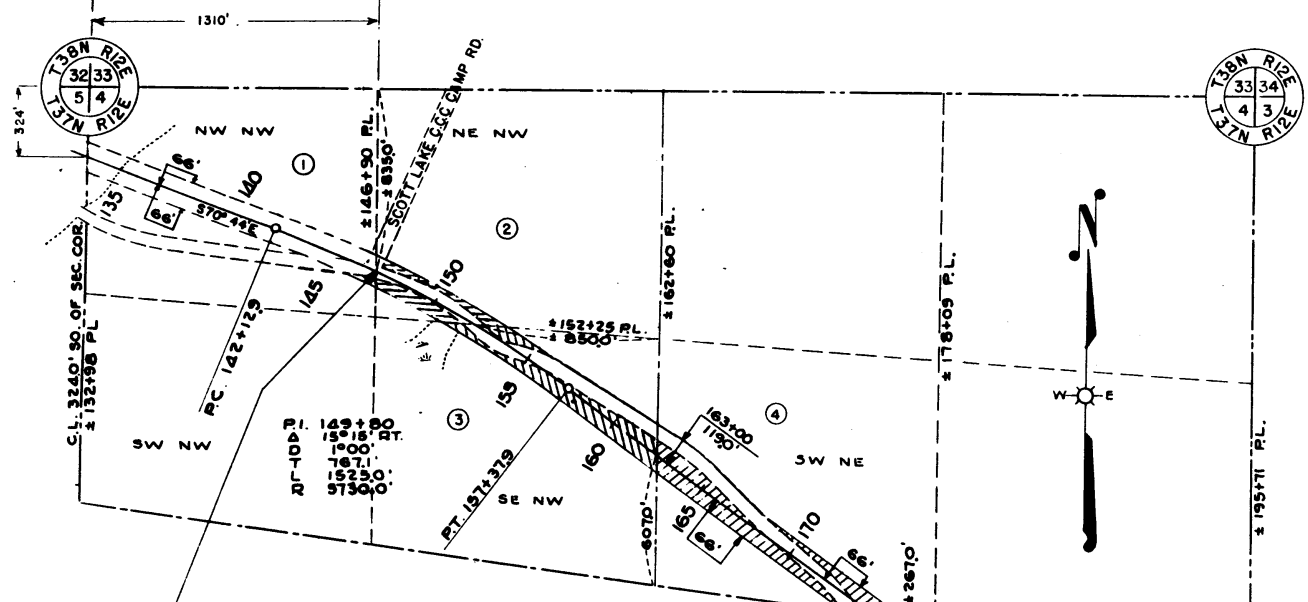


DIVISION JOB NO.



SCALE
0 100' 200'

STA. 146 + 90
BEG. RELOCATION ORDER.
DIV. JOB NO. 7164 = END
RELOCATION ORDER DIV. JOB NO. 7148

STA. 122 + 00 BEG. OF STATE PROJ. 7164
END OF STATE PROJ. 7148

STA. 247 + 00
END OF STATE PROJ. 7164

STA. 248 + 86 END RELOC.
ORDER DIV. JOB NO. 7164

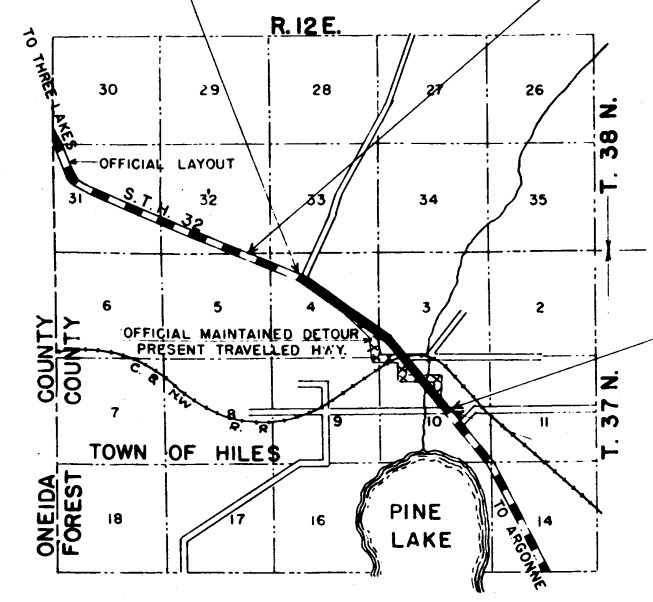
P.I. 2024.745
30554' R
10' 30"
10558'
20600'
36200'

0.56 ACRES DECLARED EXCESS
PROPERTY BY THE DIVISION OF HIGHWAYS
AND TRANSPORTATION FACILITIES SOLD
AT PRIVATE SALE TO GLENN VOTIS BY
Q.C.D. 11-11-89

REVISED 11-26-89
REVISED APR. 15, 1949.
REVISED SEPT. 4 1941 NCTE! PHCTC COPY DISTRICTED

PLAT OF RIGHT OF WAY REQUIRED
DIVISION JOB NO. 7164 (TO 702(2))
THREE LAKES - HILES ROAD
S.T.H. NO. 32 FOREST COUNTY

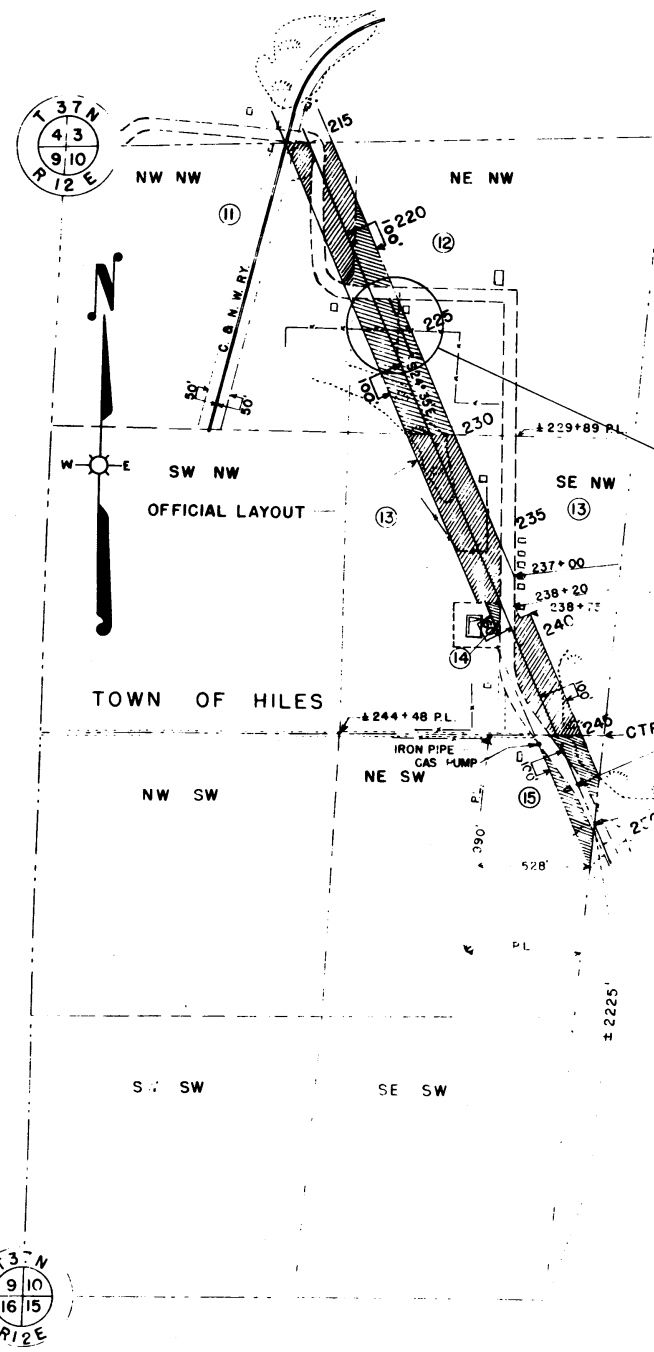
SCALE
0' 200' 400' 800'
100' 300'



LOCATION SKETCH
SCALE 0 MI. 1 MI.

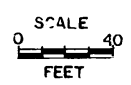
DIVISION JOB NO. _____

PAR	OWNER	ADDRESS	MORTGAGEE	ADDRESS	DESCRIPTION	ACRES			PAR
						UNIMPD	MARSH IMPRD	TOTAL	
1	UNITED STATES OF AMERICA	WASHINGTON, D.C.			N.W. 1/4 - N.W. 1/4 SEC. 4 TWP. 37N R. 12E	0.0		0.0	1
2	"	"			N.E. 1/4 - N.W. 1/4 " " " " "	0.82		0.82	2
3	"	"			S.E. 1/4 - N.W. 1/4 " " " " "	1.40		1.40	3
4	"	"			S.W. 1/4 - N.E. 1/4 " " " " "	2.75		2.75	4
5	VALENTINE TOMAZEVIC	HILES, WIS.	FEDERAL LAND BANK	SAINT PAUL, MINN.	N.W. 1/4 - S.E. 1/4 " " " " "	1.29		1.29	5
6	VALENTINE TOMAZEVIC	HILES, WIS.	FEDERAL LAND BANK	SAINT PAUL, MINN.	N.E. 1/4 - S.E. 1/4 " " " " "	5.76	3.20	8.96	6
7	VALENTINE TOMAZEVIC	HILES, WIS.			N.W. 1/4 - S.W. 1/4 SEC. 3 " " " " "	1.58	0.37	1.95	7
8	HILES REALTY CO.	HILES, WIS.			N.W. 1/4 - S.W. 1/4 " " " " "	0.05		0.05	8
9	WILLIAM BONACK	HILES, WIS.			S.W. 1/4 - S.W. 1/4 " " " " "	0.49		0.49	9
10	MARY HANSON	HILES, WIS.			S.W. 1/4 S.W. 1/4 " " " " "	1.64	4.39	6.03	10
11	HILES REALTY CO.	HILES, WIS.			N.W. 1/4 N.W. 1/4 SEC. 10 " " " " "	0.34	1.62	1.96	11
12	"	"			N.E. 1/4 N.W. 1/4 " " " " "	0.87	3.03	3.90	12
13	"	"			S.E. 1/4 N.W. 1/4 " " " " "	0.10	5.28	5.38	13
14	SUB-SCHOOL DISTRICT NO. 1	TOWN OF HILES			S.E. 1/4 N.W. 1/4 " " " " "		0.06	0.06	14
15	HENRY HANSON	HILES, WIS.			N.E. 1/4 S.W. 1/4 " " " " "	0.16	1.15	1.31	15
TOTAL						15.78	5.86	14.71	36.35



STA. 247 + 00
END OF STATE PROJ. 7164

STA. 248 + 86
END RELOCATION CRFER
DIV. JOB NO. 7164



0.25 ACRES DECLARED EXCESS PROPERTY BY THE DIVISION OF HIGHWAYS AND TRANSPORTATION SERVICES, SOLD AT PRIVATE SALE TO MUNZ NORTHERN OUTPOST BY O.C.D. 11-11-89.

REVISED 11-26-99
REVISED APRIL 5, 1949
REVISED SEPT 4, 1941

NOTE: PHOTO COPY DISTORTED

PLAT OF RIGHT OF WAY REQUIRED

DIVISION JOB NO. 7164 (TO 702(2))

THREE LAKES - HILES ROAD

S.T.H.NO. 32 FOREST COUNTY

SCALE
0 200' 400' 800'
100 300