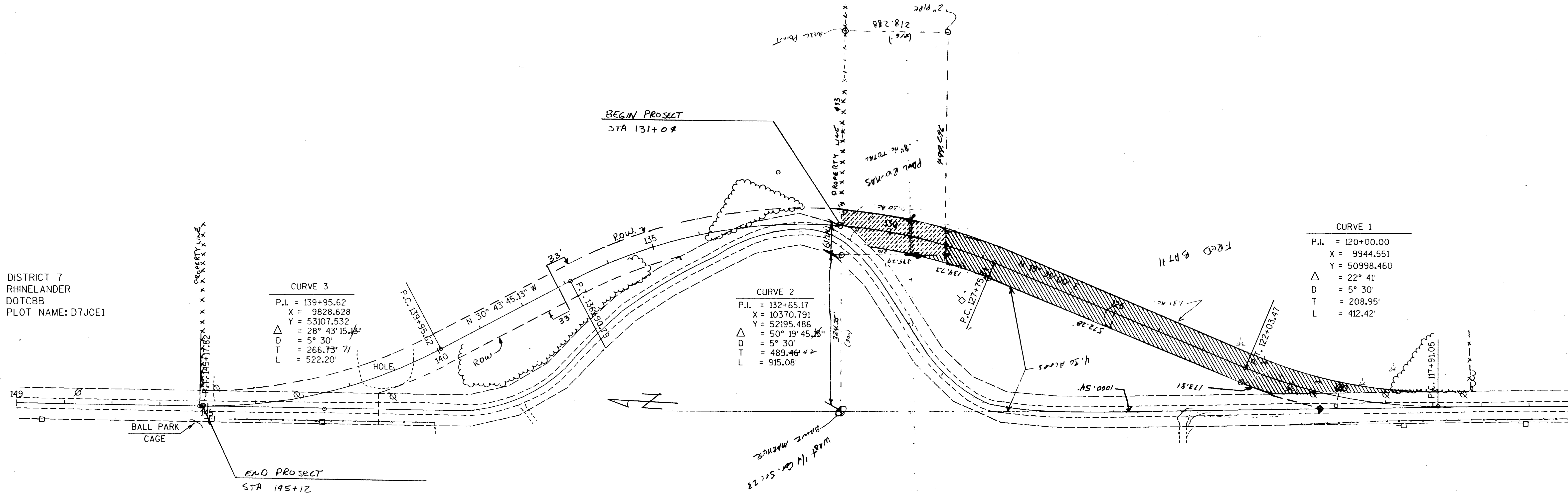


DISTRICT 7
RHINELANDER
DOTCBB
PLOT NAME: D7JOE1



CURVE 3
P.I. = 139+95.62
X = 9828.628
Y = 53107.532
Δ = 28° 43' 15.16"
D = 5° 30'
T = 266.73' 71"
L = 522.20'

CURVE 2
P.I. = 132+65.17
X = 10370.791
Y = 52195.486
Δ = 50° 19' 45.28"
D = 5° 30'
T = 489.46' 42"
L = 915.08'

CURVE 1
P.I. = 120+00.00
X = 9944.551
Y = 50998.460
Δ = 22° 41'
D = 5° 30'
T = 208.95'
L = 412.42'