

FOREST COUNTY MAP OF SURVEY

PART OF LOTS 1, 2 AND 3 OF CSM, VOL. 3, PG. 73 LOCATED IN
PART OF GOVT. LOT 1, SECTION 31, TOWNSHIP 34 NORTH, RANGE 13 EAST,
TOWN OF NASHVILLE, FOREST COUNTY, WISCONSIN.

FOREST CO SURVEYOR

FILE # 341331-20180703

DATE _____ BY _____

PARCEL 1 LEGAL DESCRIPTION

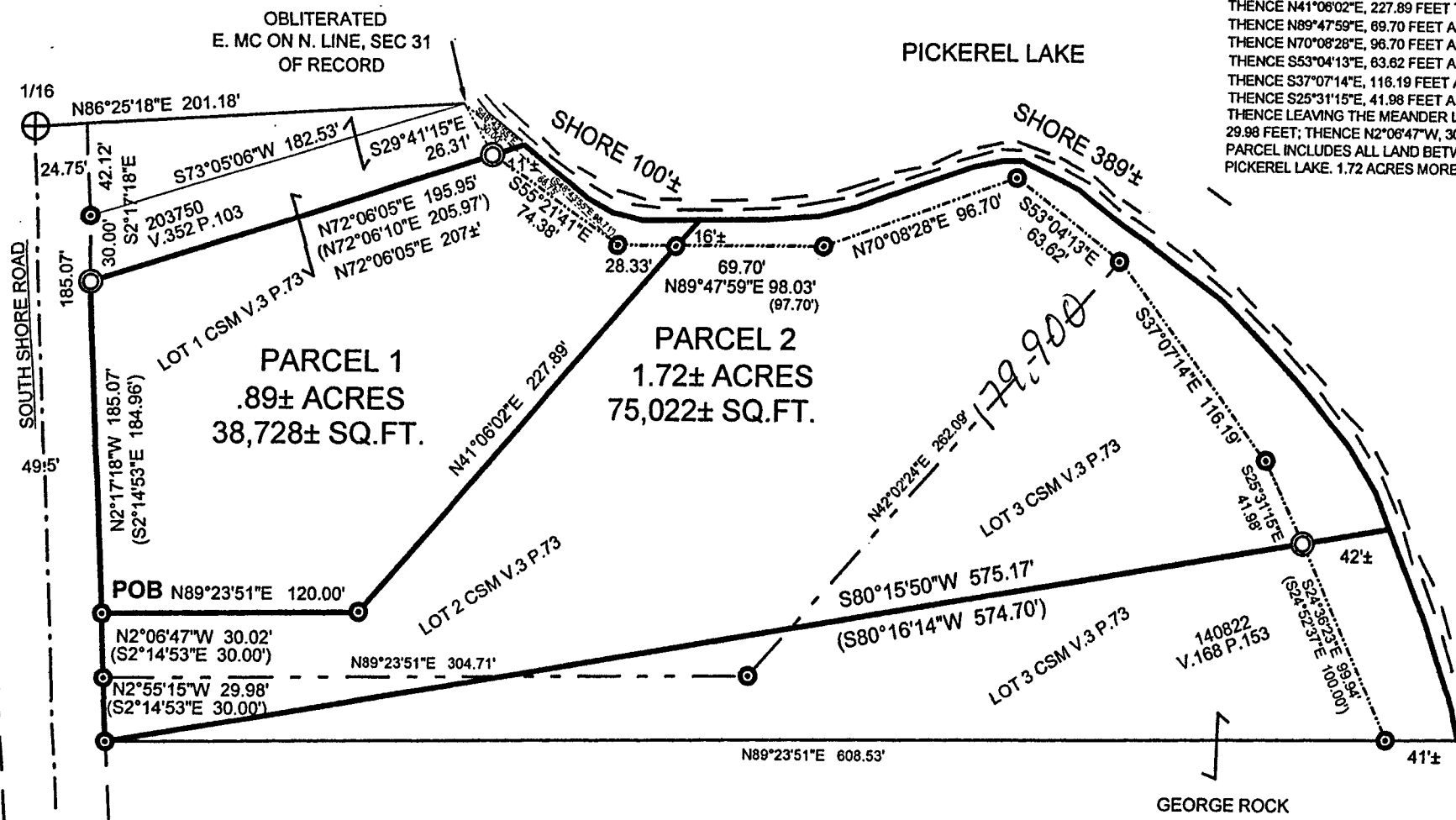
COMMENCING AT THE EAST MC CORNER OF NORTH LINE SECTION 31 T.34N. R.13E.;
THENCE S73°05'06"W, 182.53 FEET; THENCE S2°17'18"E, 185.07 FEET TO THE POINT OF
BEGINNING OF THIS SURVEY; THENCE RETRACE THE LAST CALL, N2°17'18"W, 185.07 FEET
THENCE N72°06'05"E, 195.95 FEET LINE TO A MEANDER CORNER;
THENCE S55°21'41"E, 74.38 FEET ALONG A MEANDER LINE TO A MEANDER CORNER;
THENCE N89°47'59"E, 28.33 FEET ALONG A MEANDER LINE TO A MEANDER CORNER;
THENCE LEAVING THE MEANDER LINE S41°06'02"W, 227.89 FEET;
THENCE S89°23'51"W, 120.00 FEET TO THE POINT OF BEGINNING
PARCEL INCLUDES ALL LAND BETWEEN THE MEANDER
LINES AND THE SHORE OF PICKEREL LAKE. .89 ACRES MORE OR LESS OR 38,728 SQ. FT.
MORE OR LESS.

PARCEL 2 LEGAL DESCRIPTION

COMMENCING AT THE EAST MC CORNER OF NORTH LINE SEC1
THENCE S73°05'06"W, 182.53 FEET; THENCE S2°17'18"E, 185.07 FEET
BEGINNING OF THIS SURVEY; THENCE N89°23'51"E, 120.00 FEET
THENCE N41°06'02"E, 227.89 FEET TO A MEANDER CORNER;
THENCE N89°47'59"E, 69.70 FEET ALONG A MEANDER LINE TO A
THENCE N70°08'28"E, 96.70 FEET ALONG A MEANDER LINE TO A
THENCE S53°04'13"E, 63.62 FEET ALONG A MEANDER LINE TO A
THENCE S37°07'14"E, 116.19 FEET ALONG A MEANDER LINE TO
THENCE S25°31'15"E, 41.98 FEET ALONG A MEANDER LINE TO A
THENCE LEAVING THE MEANDER LINE S80°15'50"W, 575.17 FEET
29.98 FEET; THENCE N2°06'47"W, 30.02 FEET TO THE POINT OF
PARCEL INCLUDES ALL LAND BETWEEN THE MEANDER LINES /
PICKEREL LAKE. 1.72 ACRES MORE OR LESS OR 75,022 SQ. FT. /

SURVEYOR

I, DEAN A. WILLIAMS, LAND
REGISTRATION PLS-2468, I
I HAVE SURVEYED FOR JO
AND THAT THE SAID SURV
MY KNOWLEDGE AND BELI
IS A TRUE AND CORRECT I
AND THAT I HAVE COMPLE
OF SECTION A-E 7.01 OF TI
DATED THIS 12



NTY MAP OF SURVEY

3 OF CSM, VOL. 3, PG. 73 LOCATED IN
131, TOWNSHIP 34 NORTH, RANGE 13 EAST,
E, FOREST COUNTY, WISCONSIN.

PARCEL 1 LEGAL DESCRIPTION

COMMENCING AT THE EAST MC CORNER OF NORTH LINE SECTION 31 T.34N., R.13E.;
THENCE S73°05'06"W, 182.53 FEET; THENCE S2°17'18"E, 185.07 FEET TO THE POINT OF
BEGINNING OF THIS SURVEY; THENCE RETRACE THE LAST CALL, N2°17'18"W, 185.07 FEET;
THENCE N72°06'05"E, 195.95 FEET LINE TO A MEANDER CORNER;
THENCE S55°21'41"E, 74.38 FEET ALONG A MEANDER LINE TO A MEANDER CORNER;
THENCE N89°47'59"E, 28.33 FEET ALONG A MEANDER LINE TO A MEANDER CORNER;
THENCE LEAVING THE MEANDER LINE S41°06'02"W, 227.89 FEET;
THENCE S89°23'51"W, 120.00 FEET TO THE POINT OF BEGINNING
PARCEL INCLUDES ALL LAND BETWEEN THE MEANDER
LINES AND THE SHORE OF PICKEREL LAKE. .89 ACRES MORE OR LESS OR 38,728 SQ. FT.
MORE OR LESS.

BEARINGS REFERENCED TO
THE NORTH LINE OF GOVT. LOT 1
SECTION 31, T.34N., R.13E.,
ASSUMED TO BEAR S86°25'18"E.

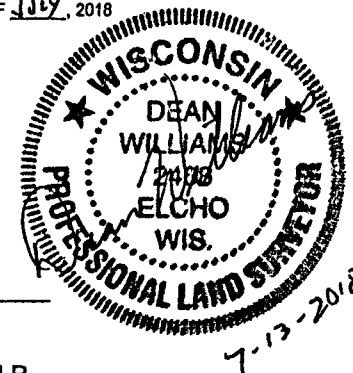
PARCEL 2 LEGAL DESCRIPTION

COMMENCING AT THE EAST MC CORNER OF NORTH LINE SECTION 31 T.34N., R.13E.;
THENCE S73°05'06"W, 182.53 FEET; THENCE S2°17'18"E, 185.07 FEET TO THE POINT OF
BEGINNING OF THIS SURVEY; THENCE N89°23'51"E, 120.00 FEET;
THENCE N41°06'02"E, 227.89 FEET TO A MEANDER CORNER;
THENCE N89°47'59"E, 69.70 FEET ALONG A MEANDER LINE TO A MEANDER CORNER;
THENCE N70°08'28"E, 96.70 FEET ALONG A MEANDER LINE TO A MEANDER CORNER;
THENCE S53°04'13"E, 63.62 FEET ALONG A MEANDER LINE TO A MEANDER CORNER;
THENCE S37°07'14"E, 116.19 FEET ALONG A MEANDER LINE TO A MEANDER CORNER;
THENCE S25°31'15"E, 41.98 FEET ALONG A MEANDER LINE TO A MEANDER CORNER;
THENCE LEAVING THE MEANDER LINE S80°15'50"W, 575.17 FEET; THENCE N2°55'15"W,
29.98 FEET; THENCE N2°06'47"W, 30.02 FEET TO THE POINT OF BEGINNING.
PARCEL INCLUDES ALL LAND BETWEEN THE MEANDER LINES AND THE SHORE OF
PICKEREL LAKE. 1.72 ACRES MORE OR LESS OR 75,022 SQ. FT. MORE OR LESS.

SURVEYORS STATEMENT

I, DEAN A. WILLIAMS, LAND SURVEYOR, WISCONSIN
REGISTRATION PLS-2468, DO HEREBY CERTIFY THAT
I HAVE SURVEYED FOR JOHN NOVAK, THE LANDS SHOWN HEREON,
AND THAT THE SAID SURVEY IS ACCURATE AND TRUE TO THE BEST OF
MY KNOWLEDGE AND BELIEF; THAT THE MAP SHOWN HEREON
IS A TRUE AND CORRECT REPRESENTATION OF THE SAID SURVEY,
AND THAT I HAVE COMPLIED WITH THE APPLICABLE REQUIREMENTS
OF SECTION A-E 7.01 OF THE WISCONSIN ADMINISTRATIVE CODE.

DATED THIS 13th DAY OF July, 2018



LEGEND

- ⊕ — RR SPIKE
- — FOUND 1.5" I.R.
- ⊙ — SET 1.03" X 24" O. D. IRON PIPE 1.13 LBS/FT
- () - RECORD OR DEED

SCALE 1" = 75'

