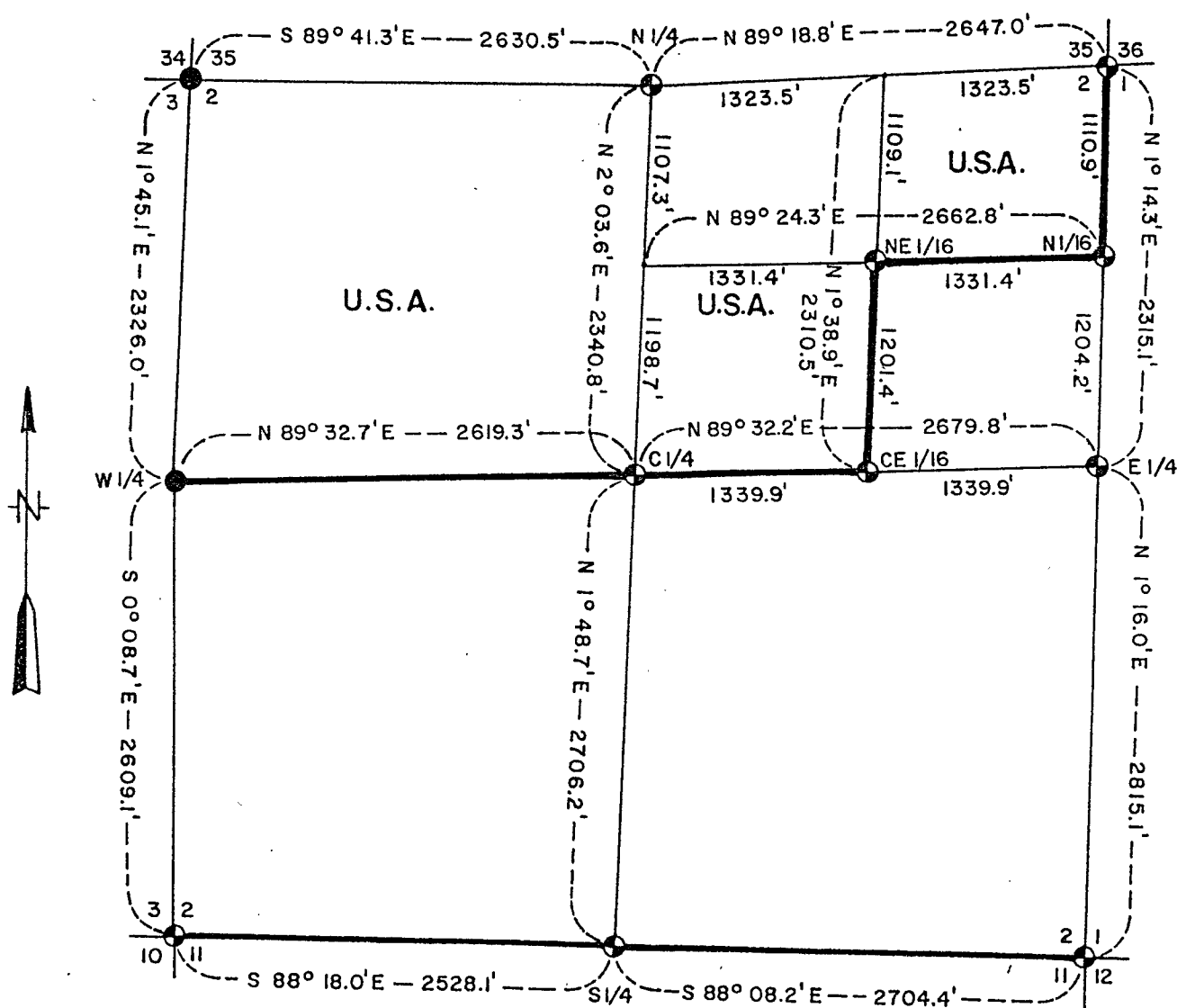


Being the NE1/4 and W1/2, NE1/4 and NW1/4 All In Section 2
Township 34 North, Range 14 East, Fourth Principal Meridian
FOREST COUNTY, WISCONSIN



⊕ 2" Diameter Aluminum Monument, 30" Long.

● 2" Diameter Iron Pipe with Brass Cap.

— Property Boundary Line Marked to Standard.

FOREST CO SURVEYOR
FILE # 341402-19841228
DATE _____ **BY** _____

Conversion Factor:
Feet to Meters - 0.304801
Meters to Feet - 3.280833

Stock No. 26273

Sheet 2 of 4

SURVEY NOTES

This survey was made by the U. S. Department of Agriculture, Forest Service, for the purpose of restoring and establishing corners on the perimeter of Section 2 for establishing subdivisional corners within Section 2 and for locating and marking the boundaries of U. S. Government land on their perimeter and within Section 2, Township 34 North, Range 14 East, 4th Principal Meridian, Forest County, Wisconsin.

The U. S. Government lands in this section were acquired in 1935.

The original government subdivision survey of this township was made in 1857 and 1859.

The corner positions recovered, restored and established by this survey are marked by the monument described in the map legend.

The corner positions established were located to an accuracy of one part in 3000.

The bearings between corner positions are true bearings as determined by solar observations.

The field notes of this survey and a copy of this plat are on file in the Forest Supervisor's Office at Rhinelander, Wisconsin.

CORNERS RECOVERED AND RESTORED1. Section Corner to Sections 1-2-35-36, T.34-35N., R.14E.

Corner position found marked by post hole from which original Elm stump was found. Large Pine stump east is original line tree, which also supports section corner.

Corner References:

Sugar	11"	N.14°E.	10.41	feet
Hemlock	6"	S.7°E.	44.33	feet
Sugar	16"	S.61°W.	42.30	feet
Basswood	10"	N.30°W.	29.03	feet
Steel Sign Post		South	1.2	feet

2. Section Corner to Sections 1-2-11-12, T.34N., R.14E.

Corner position found marked with a post hole and small stake from which original bearing tree remains were located.

Corner References:

Balsam Fir	5"	N.14°E.	29.93	feet
Red Maple	5"	S.60°E.	40.94	feet
Red Pine	10"	S.5°W.	10.52	feet
Red Pine	9"	N.86°W.	37.06	feet
Steel Sign Post		West	3.25	feet

3. Section Corner to Sections 2-3-10-11, T.34N., R.14E.

Corner position falls in centerline of town road. Iron pipe and wood post easterly 22 fit with CCC notes. Distance east fits with Nathan Smith's survey of 1925. Corner buried 12" below surface of road.

Corner References:

Red Maple	9"	N.48°E.	51.11	feet
White Pine	22"	S.39°E.	58.94	feet
Red Maple	10"	S.26°W.	57.75	feet
White Pine	23"	N.86°W.	38.01	feet
Steel Sign Post		East	20.1	feet

Stock No. 26273

Sheet 3 of 4

4. Section Corner to Sections 2-3-34-35, T.34-35N., R.14E.
See Corner Restoration Certificate, Document Number 88138.

5. Quarter Corner to Sections 1-2, T.34N., R.14E.
Corner position found marked by a scribed wood post from which the original stumps were found along with Pine stump scribed by Nathan Smith in 1925.
Corner References:

Red Pine	15"	N.82°E.	38.61	feet
Tamarac	5"	S.86°W.	51.89	feet
Tamarac	5"	N.7°W.	43.25	feet
Steel Sign Post		South	1.5	feet

6. Quarter Corner to Sections 2-11, T.34N., R.14E.
Corner position restored from remains of original Hemlock BT.
Corner References:

Red Pine	10"	S.72°E.	28.50	feet
Red Pine	8"	S.82°W.	31.29	feet
Red Pine	9"	N.49°W.	3.04	feet
Steel Sign Post		West	0.8	feet

7. Quarter Corner to Sections 2-3, T.34N., R.14E.
See Corner Restoration Certificate, Document Number 114054.

8. Quarter Corner to Sections 2-35, T.34-35N., R.14E.
Corner position set from the remains of the original BTs.
Corner References:

Sugar	6"	S.27°E.	17.35	feet
Sugar	12"	S.51°W.	34.34	feet
Sugar	12"	N.31°W.	51.59	feet
Steel Sign Post		Northeast	1.1	feet

9. Center Quarter Corner to Section 2, T.34N., R.14E.
Corner position found marked by mound of stone around post hole as set by Nathan Smith in 1925. Fence line east and west.
Corner References:

Sugar	8"	N.68°E.	25.22	feet
Yellow Birch	18"	S.13°W.	53.71	feet
White Ash	12"	N.7°W.	21.79	feet
Steel Sign Post		West	1.6	feet

CORNERS ESTABLISHED

1. North One-Sixteenth to Sections 2-1, T.34N., R.14E.
Corner established proportionally and on line between the northeast corner and the east quarter corner of Section 2.
Corner References:

Sugar	6"	N.32°E.	16.17	feet
Sugar	8"	S.64°W.	6.41	feet
Sugar	6"	N.20°W.	16.43	feet
Steel Sign Post		West	0.5	feet

Stock No. 26273

Sheet 4 of 4

2. Center East One-Sixteenth to Section 2, T.34N., R.14E.

Corner established midpoint and on line between the center quarter corner and the east quarter corner of Section 2.

Corner References:

Balsam	5"	N.9°E.	14.28 feet
Power Pole No. 3414-2R1		S.64°E.	24.82 feet
Sugar		N.52°W.	37.85 feet
Steel Sign Post		West	1.6 feet

3. Northeast One-Sixteenth to Section 2, T.34N., R.14E.

Corner established at the intersection of the north and east one-sixteenth lines of Section 2.

Corner References:

Sugar	12"	N.5°E.	15.37 feet
Sugar	10"	S.5°W.	33.28 feet
Sugar	6"	N.82°W.	29.81 feet
Steel Sign Post		East	1.1 feet

SURVEYOR'S AFFIDAVIT

State of Wisconsin }
County of Forest } SS

I, Milo E. Stefan, Cadastral Surveyor, U. S. Forest Service and a registered surveyor in the State of Wisconsin, hereby certify that I have surveyed and subdivided Section 2, Township 34 North, Range 14 East, Fourth Principal Meridian, State of Wisconsin.

The plat map and the notes herewith are a correct representation of the land surveyed and divided. I have surveyed and subdivided said section in accordance with the rules for survey of the public lands and with the statutes of the State of Wisconsin.

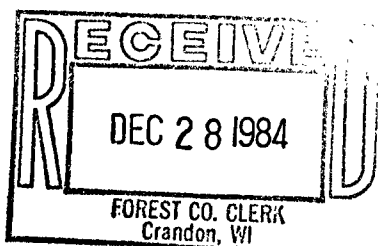


Date of Survey: 1982

Milo E. Stefan
Cadastral Surveyor, U. S. Forest Service
R.L.S. State of Wisconsin
Certificate S-1558

Plat Ready For Filing: Dale B. Stange

District Ranger



Sallie L. Deer
Deputy Co. Clerk