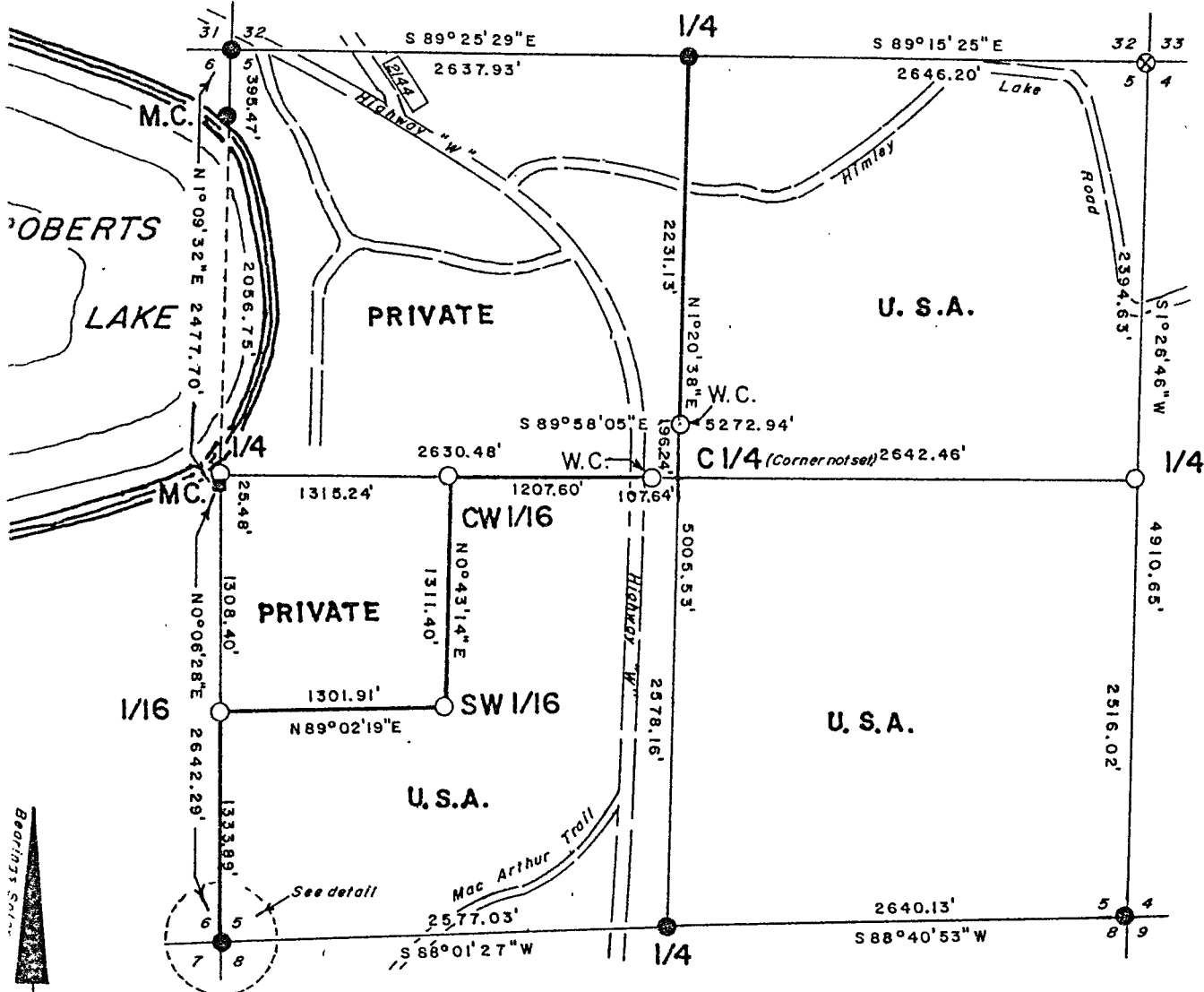
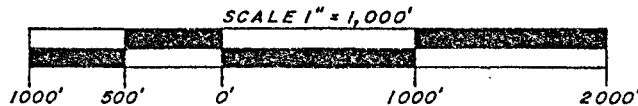


FOREST CO SURVEYOR  
FILE # 341405-19820623  
DATE \_\_\_\_\_ BY \_\_\_\_\_

## PLAT OF SURVEY U. S. GOVERNMENT LAND

Being the NE 1/4, SE 1/4, NE 1/4 of the SW 1/4, SE 1/4 of the SW 1/4  
and the SW 1/4 of the SW 1/4 of Section 5, Township 34 North,  
Range 14 East, Fourth Principal Meridian  
FOREST COUNTY, WISCONSIN



### LEGEND

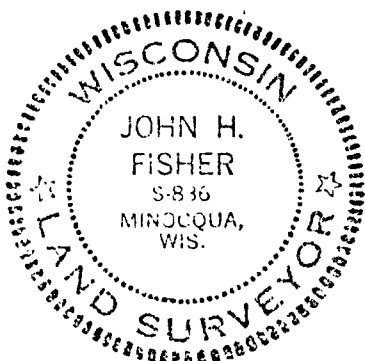
- = Recovered 6"x6" concrete monument with brass tablet stamped to identify corner.
- = Recovered round concrete monument with brass tablet stamped to identify corner.
- ⊗ = Recovered 2" iron pipe with brass tablet stamped to identify corner.
- = Corner Monumented: Set 2" aluminum pipe capped with a 3" diameter aluminum tablet stamped to identify corner.
- = Line marked by blazed and painted trees and iron sign post set in line.

### CONVERSION FACTOR

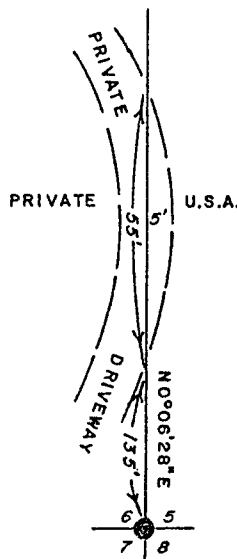
Feet to Meters: .304801

Meters to Feet: 3.280833

NORTH COUNTRY SURVEYORS



John H. Fisher R.L.S. S-836

Dated June 23, 1982DETAIL  
NOT TO SCALE

SURVEY NOTES

This survey was made by North Country Surveyors pursuant to United States Department of Agriculture, Forest Service Contract "No. 53-569R-2-00011, Cadastral Survey" for the purpose of recovering, restoring, establishing, marking and perpetuating the corners and boundary lines of the U. S. Government land on the perimeter and within Section 5, T34N, R14E, Fourth Principal Meridian, Forest County, Wisconsin as shown on the plat herewith.

The original Government survey of the north township line was made by Alfred Millard, Deputy Surveyor in August of 1857. The original Government subdivision survey of this township was made by James McBride in 1859.

The west line of Section 5 was resurveyed by Hugh B. Crawford, Associates Cadastral Engineer during a dependent resurvey of Section 6, T34N, R14E conducted in 1946.

Bearings between corner positions are true bearings by reference to a solar observation. All distances shown hereon are in feet and hundredths of feet. The control traverse was measured by use of electronic distance measuring equipment to an accuracy of one part in 63,000. Corners recovered, restored and established by this survey are marked by the monument described in the map legend. Each monumented corner position is referenced to blazed and scribed bearing trees and described reference objects.

CORNERS RECOVERED1. Corner to Sections 31-32-5-6

Corner monument is a round concrete monumnet with a brass tablet stamped to identify the corner as established in dependent resurvey of Section 6 in 1946. Corner recertified by George V. Kapitz on November 30, 1961.

## Corner References

Maple	17"	S62°W	23.1 feet
Maple	15"	N56°W	43.2 feet
Balsam	8"	N33°W	12.5 feet
N.E. corner of cabin		S23°W	17.7 feet
4" X 4" Square post	2' northeast of monument		

2. Corner to Sections 5-6-7-8

Corner monument is a round concrete monument with a brass tablet stamped to identify the corner as established in dependent resurvey of Section 6 in 1946.

## Corner References

Basswood	12"	N60°E	22.4 feet
Basswood	6"	S20°E	21.8 feet
Maple	12"	S32°E	93.6 feet
Maple	8"	N47°W	6.9 feet
Steel post with sign 1' southeast of monument			

3. Corner to Sections 4-5-8-9

Corner monument is 2" iron pipe filled with concrete with a brass tablet stamped to identify the corner monumented by Jean F. Resvick on June 3rd., 1964.

## Corner References

Maple	8"	S13°E	17.6 feet
Maple	8"	S54°W	35.8 feet
Cherry	6"	N50°W	19.7 feet
Maple	5"	N49°E	32.2 feet
4" x 4" Cedar post with sign 1.3' Southwest of monument.			

Corner is on hill top 200 feet more or less east of snowmobile trail.

4. Corner to Sections 32-33-4-5

Corner monument is 2" iron pipe with brass tablet stamped to identify the corner monumented by Jean F. Resvick set from evidence of original corner on July 10th., 1963.

## Corner References

Spruce	4"	N45°E	10.7 feet
Spruce	5"	S36°W	41.2 feet
Spruce	4"	S58°E	28.2 feet
Tamarack	4"	N39°W	10.9 feet
4" X 4" Square post with sign, 1.5 feet south of monument.			

5. One-Quarter Corner to Sections 32-5

Corner monument is a round concrete monument with a brass tablet stamped to identify the corner as established from the remains of an original bearing

tree in the dependent resurvey of section 6 in 1946.  
Corner visited by Jean F. Resvick on August 8th., 1963.

#### Corner References

Tamarack	4"	S22°E	10.2 feet
Cedar (dead)	7"	N63°W	5.9 feet
Aspen (Resvick)	10"	N33°W	45.5 feet
Set steel post with sign 1 foot east of monument.			

#### 6. One-Quarter Corner to Section 5-8

Corner monument is a round concrete monument with a brass tablet stamped to identify the corner as established from the remains of an old post in the dependent resurvey of section 6 in 1946. Corner visited by Jean F. Resvick on August 8, 1963 and two Elm Bearing trees were set.

#### Corner References

Maple	25"	N16°W	30.0 feet
Basswood	16"	S 8°E	13.8 feet
Elm (dead)	7"	N34°E	10.2 feet
Elm	7"	S73°W	18.9 feet
Steel sign post 1.7' Northeast of monument.			

#### 7. South Meander Corner On West Section Line

Corner monument is a 6" X 6" concrete monument with a brass tablet stamped to identify the corner as established from evidence of old post and original bearing trees in the dependent resurvey of Section 6 in 1946.

#### Corner References

Tamarack	12"	S64°W	55.0 feet
Cedar	12"	S 5°E	55.1 feet
White Birch	16"	S16°W	89.8 feet
Set steel post with sign 1.3 feet north of monument.			

#### 8. North Meander Corner On West Section Line

Corner monument is a round concrete monument with a brass tablet stamped to identify the corner as established in the dependent resurvey of Section 6 in 1946.

Stock No. 26273

Corner References

Balsam	7"	N10°W	18.4 feet
Red Maple	8"	N32°E	27.2 feet
Sugar Maple	8"	N73°E	23.3 feet
Set steel post with sign 1.5 feet, N18°E of monument.			

CORNERS ESTABLISHED1. One-Quarter to Section 5-6

Corner monument is 2" aluminum pipe, 5 feet in length with aluminum tablet stamped to identify corner. Corner set by single proportionate measure between south meander corner on section line and section corner 31-32-6-5, according to original Government distances.

Corner References

Nail in White Birch	12"	S28°W	17.15 feet
Nail in Tamarack	15"	N17°E	34.12 feet
Nail in Elm	8"	S84°E	30.15 feet
Set steel post with sign S50°E, 1.2 feet from monument.			

2. One-Quarter Corner to Sections 4-5

Corner monument is 2" aluminum pipe, 3 feet in length with aluminum tablet stamped to identify corner. Corner set by single proportionate measure between section corner 4-5-8-9 and section corner 32-33-4-5 according to original Government distances.

Corner References

Nail in Sugar Maple	6"	N35°E	29.85 feet
Nail in White Birch	8"	S75°E	6.50 feet
Nail in Sugar Maple	4"	S 8°W	13.51 feet
Set steel post with sign, North 1.9 feet from monument.			

3. North Witness To Center One-Quarter

Corner monument is 2" aluminum pipe, 3 feet in length with aluminum tablet stamped T34N, R14E, Witness Corner C 1/4 S.5, 196.24 feet, S., 1982, RLS 836. Monument is located on one-quarter line at a point 196.24 feet north of the center one-quarter location which could not be monumented.

Stock No. 26273

## Corner References

Nail in Balsam	5"	N72°E	16.83 feet
Nail in White Birch	10"	S86°E	9.05 feet
Nail in White Birch	7"	S44°E	25.82 feet
Set steel post with sign 2.0 feet north of monument.			

4. West Witness to Center One-Quarter

Corner monument is 2" aluminum pipe, 3 feet in length with aluminum tablet stamped T34N, R14E, Witness Corner, 107.64 feet. C1/4, S.5, 1982 R.L.S. 836. Monument is located on one-quarter line at a point 107.64 feet west of the center one quarter location which could not be monumented.

## Corner References

Nail in Aspen	5"	North	10.25 feet
Nail in Aspen	7"	S69°W	12.56 feet
Nail in Aspen	7"	S 2°E	18.20 feet
Set steel post with sign 1.6 feet east of monument.			

5. Center - West One Sixteenth

Corner monument is 2" aluminum pipe, 5 feet in length with aluminum tablet stamped CW 1/16, Monument is set on line and at the mid point between the C 1/4 and W 1/4 corner of the section.

## Corner References

Nail in Tamarack	8"	S10°W	7.45 feet
Nail in Black Spruce	9"	N41°W	6.95 feet
Nail in Tamarack	6"	N60°E	5.00 feet
Set steel post with sign 1.0 feet east of monument.			

6. South - West One Sixteenth

Corner monument is 2" aluminum pipe, 5 feet in length with aluminum tablet stamped SW 1/16. Monument is set at the intersection of the sixteenth lines in the southwest quarter of the section.

## Corner References

Nail in Cedar	6"	S74°E	12.85 feet
Nail in Cedar	9"	N 8°E	15.39 feet
Nail in Cedar	8"	N72°W	15.95 feet
Set steel post with sign 2.1 feet north of monument.			

7. South One Sixteenth Corner

Corner monument is 2" aluminum pipe, 5 feet in length with aluminum tablet stamped S1/46. Monument is set on line between section corner 5-6-7-8 and the south M.C. on the west line and at proportionate distance between One-quarter corner 5-6 and section corner 5-6-7-8.

## Corner References

Nail in Red Maple 5"	S87°E	38.72 feet
Nail in Black Spruce 9"	N28°W	52.89 feet
Nail in Elm 7"	S35°W	29.58 feet

Set steel post with sign 1.8 feet south of monument.

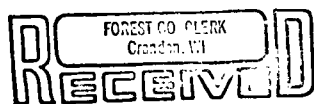
SURVEYOR'S AFFIDAVIT

State of Wisconsin) )  
County of Forest )ss

I, John H. Fisher, Land Surveyor, registered in the State of Wisconsin, hereby certify that I have surveyed and subdivided Section 5, T34N, R14E, Fourth Principal Meridian, County of Forest, State of Wisconsin, in accordance with the rules for the survey of the public lands and with the statutes of the State of Wisconsin. The plat map and survey notes are an accurate representation of the corners recovered and established.

John H. Fisher 6/23/82  
Registered Land Surveyor, State of  
Wisconsin  
Certificate No. S-836

Date of Survey: March - June 1982



JUL 15 1982

*Dora C. James*

