

Stock No. 26273

FOREST CO SURVEYOR
 FILE # 341409-19880000
 DATE _____ BY _____

SHEET 1 OF 4

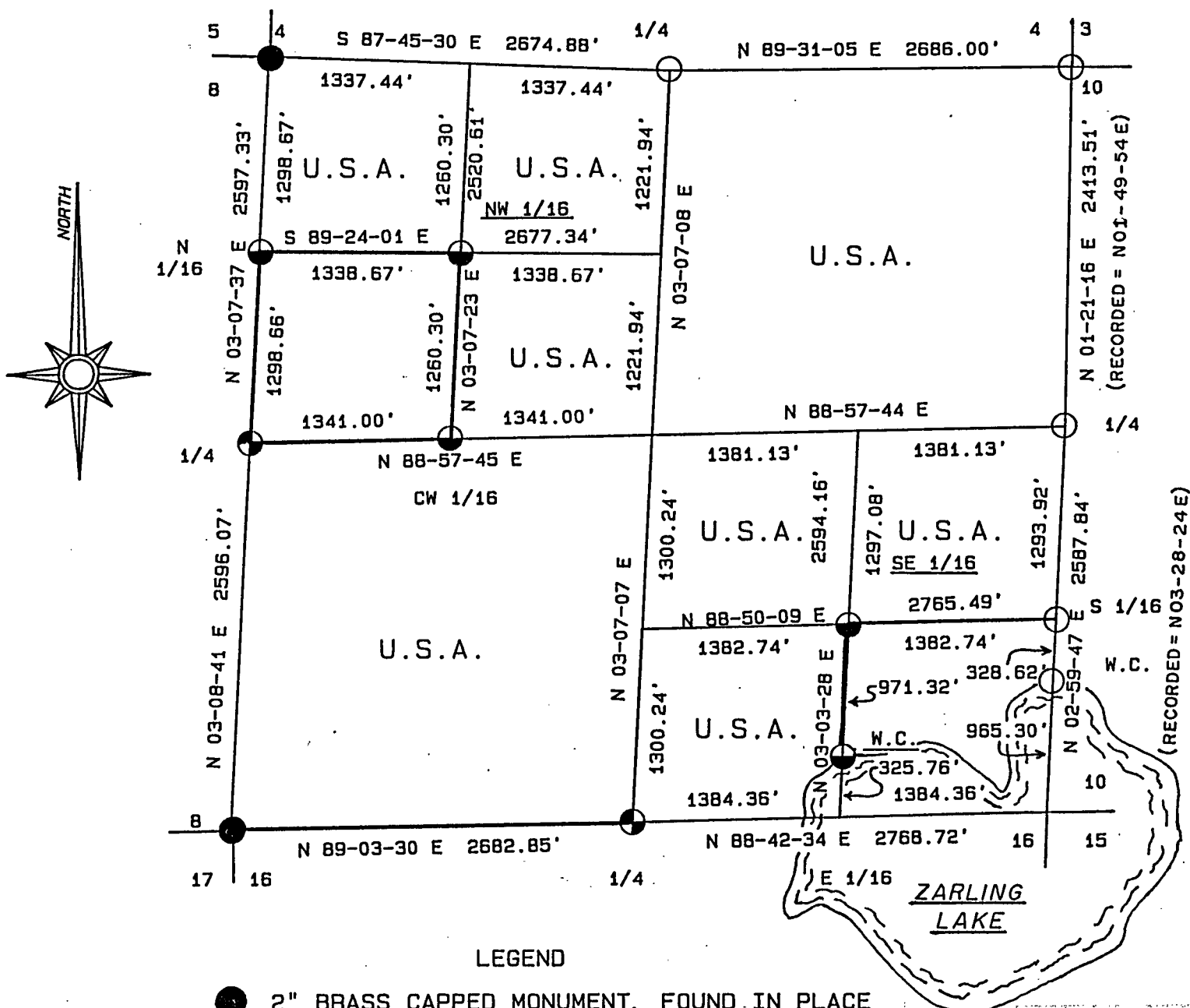
PLAT OF SURVEY U.S. GOVERNMENT LANDS

BEING THE NE 1/4; N 1/2 AND SW 1/4, SE 1/4; SW 1/4; AND THE
 N 1/2 AND SE 1/4, NW 1/4; SECTION 9; TOWNSHIP 34 NORTH; RANGE 14 EAST;
 FOURTH PRINCIPAL MERIDIAN;
 FOREST COUNTY; WISCONSIN.

1000 0 1000 2000 3000



GRAPHIC SCALE - 1" = 1000'



LEGEND

- 2" BRASS CAPPED MONUMENT, FOUND IN PLACE
- 2 1/2" ALUMINUM MONUMENT, FOUND IN PLACE.
- ◐ 2 1/2" X 36" ALUMINUM MONUMENT, SET THIS SURVEY.
- ◑ 1 1/2" X 36" ALUMINUM MONUMENT, SET THIS SURVEY.
- MARKED BOUNDARY LINE OF U.S. GOVERNMENT LANDS.



Stock No. 26273

Sheet 2 of 4

SURVEY NOTES

This survey was made by the U. S. Department of Agriculture, Forest Service, for the purpose of restoring and establishing corners on the perimeter of Section 9, for establishing subdivisional corners within Section 9, and for locating and marking the boundaries of U. S. Government land on their perimeter and within Section 9, Township 34 North, Range 14 East, 4th Principal Meridian, Forest County, Wisconsin.

The U. S. Government lands in this section were acquired from 1935 to 1943.

The original government subdivision survey of this township was made in 1859.

The corner positions recovered, restored and established by this survey are marked by the monument described in the map legend.

The corner positions established were located to an accuracy of one part in 3000.

The bearings between corner positions are true bearings as determined by solar observations.

The field notes of this survey and a copy of this plat are on file in the Forest Supervisor's Office at Rhinelander, Wisconsin.

CORNERS RECOVERED OR RESTORED

1. Section Corner Common to Sections 4, 5, 8, and 9.
Corner position monumented by J. Resvick, R.L.S., 802. Certificate on file in Forest County.
2. Section Corner Common to Sections 3, 4, 9, and 10.
Corner position monumented by A. Harrison, R.L.S., 1651. Certificate on file in Forest County.
3. Section Corner Common to Sections 9, 10, 15, and 16.
Corner position falls in lake and is witnessed, corner certificate on file in Forest County.
4. Section Corner Common to Sections 8, 9, 16, and 17.
Corner position monumented by J. Resvick, R.L.S., 802. Certificate on file in Forest County.
5. Quarter Corner Common to Sections 4 and 9.
Corner position monumented by M. Stefan, R.L.S., 1558. Certificate on file in Forest County.
6. Quarter Corner Common to Sections 9 and 10.
Corner position monumented by A. Harrison, R.L.S., 1651. Certificate on file in Forest County.
7. Quarter Corner Common to Sections 9 and 16.
Corner position recovered and marked by a post point. Stump remains of the original B.T.s; also a metal location tag was found on a tree as called for on the C.C.C. notes.
Corner References:

W. Pine	9"	N.67E.	37.41 feet
Sugar	7"	S.02E.	26.41 feet
Hemlock	12"	S.59W.	47.29 feet
Steel Sign Post		East	0.85 feet

Stock No. 26273

Sheet 3 of 4

8. Quarter Corner Common to Sections 8 and 9.

Corner position recovered, marked by a 2½" iron well point in a mound of rock. No other evidence was found, well point was accepted as best remaining evidence of corner location.

Corner References:

Hemlock	13"	N.09E.	54.54 feet
Sugar	4"	S.20E.	26.80 feet
Sugar	14"	N.59W.	45.64 feet
Steel Sign Post		North	0.88 feet

9. South Sixteenth Corner Common to Sections 9 and 10.

Corner position monumented from previous survey by A. Harrison, R.L.S. 1651.

Corner References:

Sugar	6"	S.11E.	7.29 feet
Sugar	7"	S.59W.	10.21 feet
Sugar	8"	N.57W.	15.75 feet
Steel Sign Post		South	0.80 feet

10. North Sixteenth Corner Common to Sections 8 and 9.

Corner position found, marked by a 1½" iron pipe.

Corner References:

Sugar	9"	N.23E.	31.00 feet
Sugar	7"	N.89W.	38.11 feet
Steel Sign Post		Northwest	1.07 feet

CORNERS ESTABLISHED1. Southeast Sixteenth Corner to Section 9.

Corner established at the intersection of the south and east sixteenth lines of Section 9.

Corner References:

Black Cherry	10"	N.10E.	38.77 feet
Black Cherry	10"	S.40W.	39.80 feet
Steel Sign Post		Northwest	0.81 feet

2. Witness Corner to East Sixteenth to Sections 9 and 16.

Corner established N.1-49-28E. 325.77 feet from east sixteenth corner position which would fall in the water of Zarling Lake.

Corner References:

Hemlock	17"	S.67W.	44.19 feet
Sugar	10"	N.43W.	18.47 feet
Steel Sign Post		North	0.52 feet

3. Northwest Sixteenth Corner to Section 9.

Corner established at the intersection of the north and west sixteenth lines to section 9.

Corner References:

Sugar	10"	N.10E.	32.38 feet
Sugar	8"	N.76E.	15.70 feet
Steel Sign Post		Northeast	0.85 feet

4. Center West Sixteenth to Section 9.

Corner established midpoint and on line between the center quarter and the west quarter corner to section 9.

Corner References:

Sugar	5"	S.43E.	27.25 feet
Sugar	8"	S.72W.	17.96 feet
Steel Sign Post		Southeast	1.14 feet



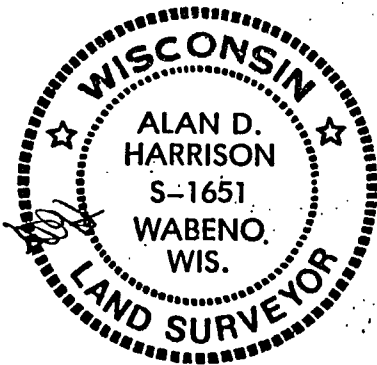
Stock No. 26273

Sheet 4 of 4

SURVEYOR'S AFFIDAVITState of Wisconsin]
County of Forest] SS

I, Alan D. Harrison, Land Surveyor, USDA, Forest Service and a registered surveyor in the State of Wisconsin, hereby certify that I have surveyed and subdivided Section 9, Township 34 North, Range 14 East, Fourth Principle Meridian, State of Wisconsin.

The plat map and the notes herewith are a correct representation of the land surveyed and divided. I have surveyed and subdivided said section in accordance with the rules for survey of the public lands and with the statutes of the State of Wisconsin.



Alan D. Harrison
Land Surveyor, USDA, Forest Service
R.L.S., State of Wisconsin
Certificate S-1651

Plat ready for filing:

Dale B. Staege
District Ranger

Date of Survey: 1988

