

Stock No. 26273

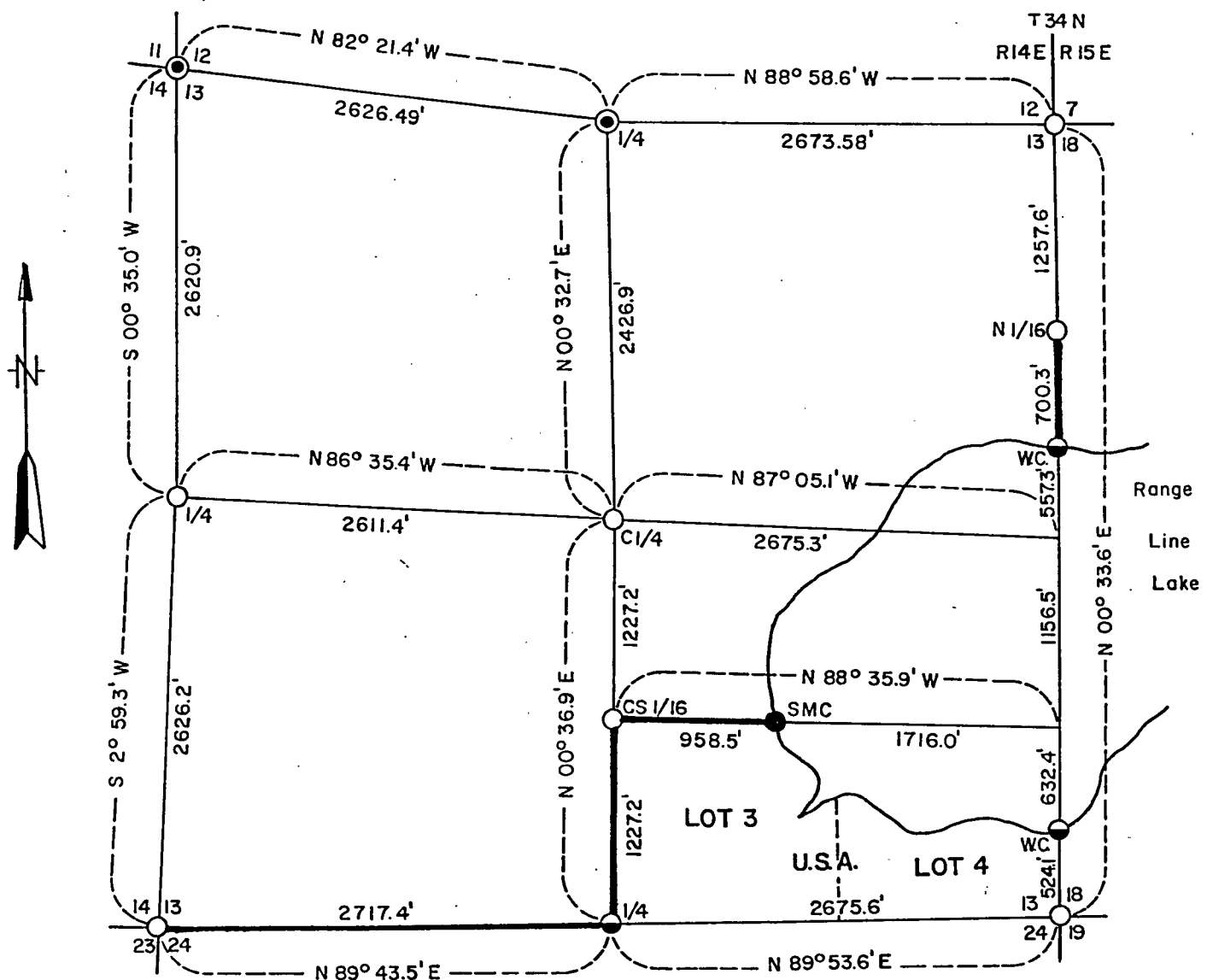
FOREST CO SURVEYOR
 FILE # 341413-19820305
 DATE _____ BY _____

SHEET 1 of 5

PLAT OF SURVEY U.S. GOVERNMENT LAND

Being U.S. Government Lots 3 and 4 Section 13
 Township 34 North, Range 14 East, Fourth Principle Meridian
 FOREST COUNTY, WISCONSIN

1000 0 1000
 SCALE IN FEET



LEGEND

- Corner Marked by a 2"x120" Aluminum Pipe With Aluminum Cap.
- Corner Marked by a 2"x30" Aluminum Pipe With Aluminum Cap.
- ⊙ Corner Marked by a 2"x60" Aluminum Pipe With Aluminum Cap.
- ⊗ Corner Marked by a Railroad Spike in Road Surface With 2"x30" Aluminum Pipe With as Reference Point.
- Boundary Lines Marked and Posted.

U.S.A. U.S. Government Lands.

Conversion Factors:
 Feet to Meters - 0.304801
 Meters to Feet - 3.280833

Stock No. 26273

Sheet 2 of 5

SURVEY NOTES

This survey was made by the U. S. Department of Agriculture, Forest Service, for the purpose of restoring and establishing corners on the perimeter of Section 13, for establishing subdivisional corners within Section 13, and for locating and marking the boundaries of U. S. Government land on the perimeter and within Section 13, Township 34 North, Range 14 East, 4th Principal Meridian, Forest County, Wisconsin.

The U. S. Government lands in this section were acquired in 1938 and 1971.

The original government survey of this township was made in 1857 and 1859. Subsequent surveys were made by Nathan Smith in 1907, 1908, 1909, and 1936.

The corner positions recovered, restored and established by this survey are marked by the monument described in the map legend.

The corner positions established were located to an accuracy of one part in 3000.

The bearings between corner positions are true bearings, as determined by solar observations.

The field notes of this survey and a copy of this plat are on file in the Forest Supervisor's Office at Rhinelander, Wisconsin.

CORNERS RECOVERED AND RESTORED1. Section Corner to Sections 7-18-12-13, T.34N., R.14-15E.

Corner position found marked by an iron pipe below road surface, at road intersection.

Corner References:

Basswood	10"	N.71°E.	86.73 feet
Butternut	12"	S.15°E.	140.74 feet
Sugar maple	8"	S.57°W.	113.00 feet
Sugar maple	4"	N.13°W.	159.25 feet
Steel sign post		S.12°E.	17.3 feet

2. Section Corner to Sections 13-18-19-24, T.34N., R.14-15E.

Corner position restored from evidence of original bearing trees and from surveys of Nathan Smith in 1907, 1908, and 1909.

Corner References:

Sugar maple	12"	N.58°E.	34.86 feet
Sugar maple	6"	S.87°E.	76.45 feet
Sugar maple	12"	S.21°W.	23.17 feet
Sugar maple	4"	N.20°W.	40.47 feet
Steel sign post		South	20.9 feet

3. Section Corner to Sections 11-12-13-14, T.34N., R.14E.

Corner position restored at intersection of centerline of county highway southerly, fence line northerly and centerline of State Highway #52, east-west. The bearings and distances conform to subsequent surveys by Nathan Smith in 1908.

Corner References:

2" x 30" Aluminum monument,	Reference Point,	Northwest,	50.00 feet
Balsam fir	8"	S.72°W.	5.48 feet
Red maple	7"	N.9°W.	51.48 feet
Steel sign post		North	0.7 feet
Corner is a railroad spike in surface of State Highway #52.			

Stock No. 26273

Sheet 3 of 5

4. Section Corner to Sections 13-14-23-24, T.34N., R.14E.

Corner position restored at the intersection of centerline of county highway westerly, fence line easterly and centerline of county highway, north-south.

Corner References:

Sugar maple	6"	N.77°E.	42.24 feet
Sugar maple	7"	S.25°E.	56.77 feet
Sugar maple	22"	S.63°W.	106.03 feet
Sugar maple	18"	N.31°W.	99.06 feet
Steel sign post		East	19.6 feet

5. Quarter Corner to Sections 12-13, T.34N., R.14E.

Corner position restored at intersection of fence lines, north-south, and centerline of State Highway #52, east-west.

Corner References:

2" x 30" Aluminum monument,	Reference Point,	Southeast,	50.00 feet
Black cherry	12"	N.89°E.	4.90 feet
Sugar maple	18"	S.10°W.	12.69 feet
Steel sign post		South	.9 feet
Corner is a railroad spike in the surface of State Highway #52.			

6. Quarter Corner to Sections 13-14, T.34N., R.14E.

Corner position restored at intersection of fence lines, east-west, and centerline of county highway, north-south.

Corner References:

Red pine	4"	N.53°E.	42.23 feet
Red pine	4"	S.37°E.	49.51 feet
Sugar maple	6"	N.47°W.	91.59 feet

7. Quarter Corner to Sections 13-24, T.34N., R.14E.

Corner position found marked by a wood post and bearing trees from Smith's 1908 and 1936 subsequent surveys.

Corner References:

Cedar	6"	S.59°E.	20.35 feet
Cedar	7"	West	40.71 feet
Cedar	9"	N.20°W.	23.08 feet
Steel sign post		North	3.1 feet

8. Quarter Corner to Sections 13-18, T.34N., R.14-15E.

Corner position falls in Range Line Lake. Subsequent surveys by Nathan Smith established this corner on the ice in 1907 and 1908. At that time, evidence of both meander corners was present. He recognized the called distance between the MC's as short, by 6.27 chains. By proportionate distance, he positioned this corner on the ice. I, therefore, accept Smith's surveys and proportioned out his errors and positioned the corner on line and 2313.1 feet north of the southwest section corner to Section 18.

8a. We placed a witness corner on the north shore of Range Line Lake 557.3 feet north of $\frac{1}{4}$ corner.

Corner References:

Cedar	9"	N.21°E.	19.18 feet
Cedar	8"	S.83°W.	31.86 feet
Black ash	3"	N.5°W.	47.09 feet
Steel sign post		North	6.5 feet

Stock No. 26273

Sheet 4 of 5

- 8b. We placed a witness corner on the south shore of Range Line Lake 1789.0 feet south of $\frac{1}{4}$ corner.

Corner References:

Black ash	5"	N.58°E.	28.26 feet
Black ash	7"	S.60°E.	15.81 feet
Black ash	8"	S.39°W.	21.71 feet
Steel sign post		Northeast	2.0 feet
Bears		N.6°44' - 41"E.	11.62 feet

9. Center Quarter Corner.

Corner position found marked by an iron pipe in mound of stone. Remains of Smith 1908 survey, whereby he paced bearing trees to the corner. Both of these bearing trees were in evidence. True center quarter corner would bear S.6° - 44.7'E., 11.62 feet.

Corner References:

Sugar maple	7"	N.36°E.	21.71 feet
White ash	8"	S.51°E.	20.59 feet
Sugar maple	7"	S.75°W.	22.19 feet
Steel sign post		North	1.2 feet

CORNERS ESTABLISHED

1. North Sixteenth Corner to Sections 13-18.

Corner position established on line and midpoint between the west quarter corner and northwest section corner to Section 18.

Corner References:

Sugar maple	15"	N.40°E.	51.17 feet
White ash	10"	S.39°E.	26.23 feet
Sugar maple	24"	S.81°W.	15.61 feet
Steel sign post		South	1.0 feet
1" Iron pipe		N.27°E.	52.25 feet

2. Center South Sixteenth Corner.

Corner position established on line and midpoint between the center quarter and south quarter corner.

Corner References:

Sugar maple	8"	N.35°E.	27.14 feet
Hemlock	10"	S.51°W.	37.16 feet
Sugar maple	10"	N.73°W.	45.45 feet
Steel sign post		East	2.8 feet

3. Special Meander Corner.

Corner position established on the south sixteenth line and west shore of Range Line Lake 958.5 feet east of the center south sixteenth corner.

Corner References:

Tamarack	5"	S.54°E.	4.20 feet
Tamarack	6"	S.15°W.	11.77 feet
Tamarack	5"	N.65°W.	12.78 feet
Steel sign post		West	1.4 feet

Stock No. 26273

Sheet 5 of 5

SURVEYOR'S AFFIDAVIT

State of Wisconsin
County of Forest]

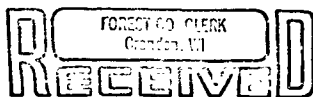
I, Milo E. Stefan, Cadastral Surveyor, U. S. Forest Service and a registered surveyor in the State of Wisconsin, hereby certify that I have surveyed and subdivided Section 13, Township 34 North, Range 14 East, Fourth Principal Meridian, State of Wisconsin.

The plat map and the notes herewith are a correct representation of the land surveyed and divided. I have surveyed and subdivided said section in accordance with the rules for survey of the public lands and with the statutes of the State of Wisconsin.



Milo E. Stefan
Cadastral Surveyor, U. S. Forest Service
R.L.S. State of Wisconsin
Certificate S-1558

Date of Survey: 1982



MAR 5 1982

Dora C. James