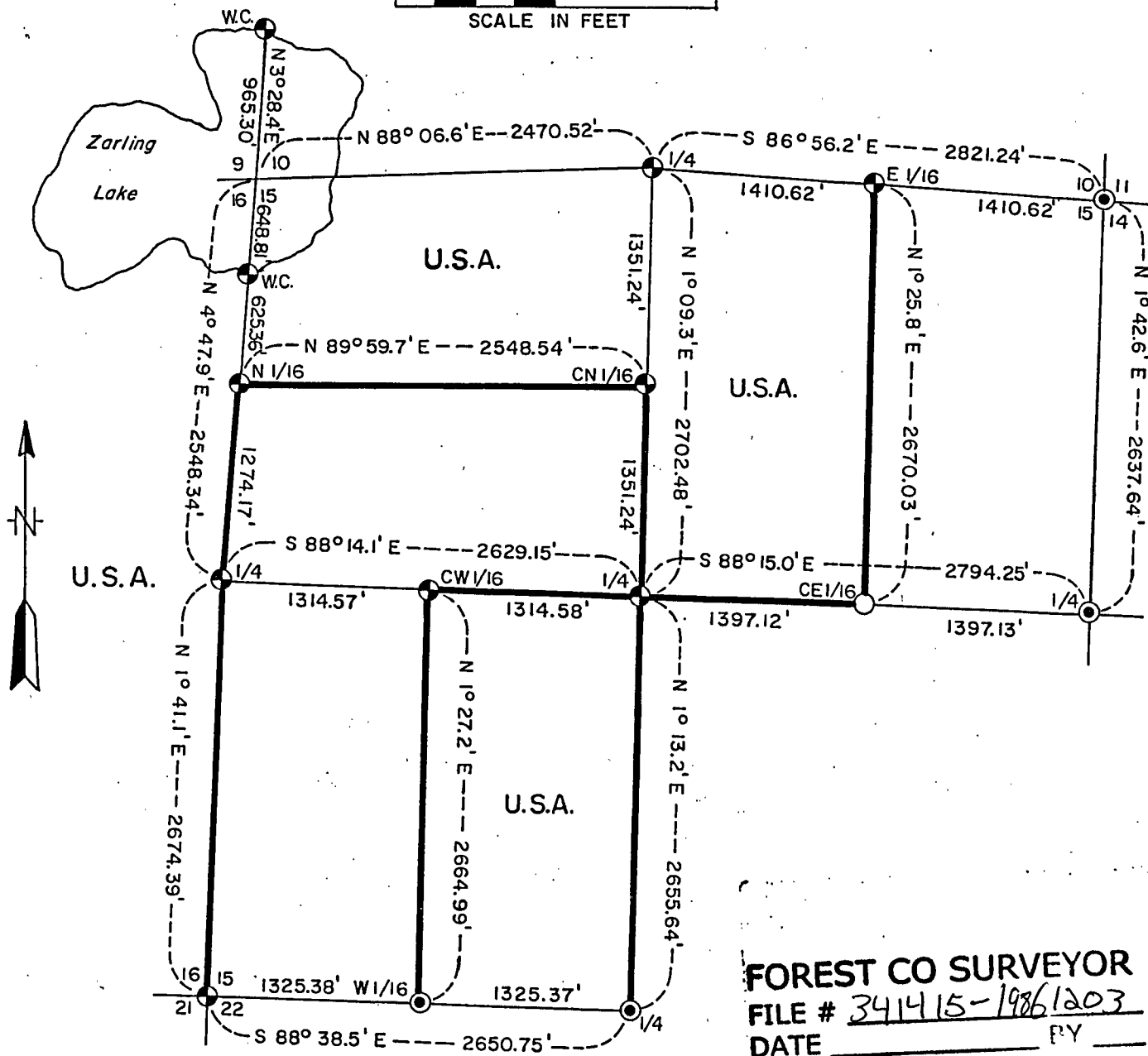


Country
Club

SHEET 1 OF 5

A horizontal scale bar with a black and white checkered pattern. The left end is labeled '1000', the center is labeled '0', and the right end is labeled '1000'. Below the bar, the text 'SCALE IN FEET' is printed.



LEGEND

- ⊕ 2 1/2" Diameter Aluminum Monument, 36" Long
- 2 1/2" Diameter Aluminum Monument, 60" Long
- ⊙ R.R. Spike in Highway Referenced by 2 1/2" Diameter Aluminum Monument, 36" Long
- Corner Marked by a 26" Sugar Maple
- Marked Property Boundary U.S. Government Lands

Conversion Factor:
Feet to Meters-3.280833
Meters to Feet - 0.304801

Stock No. 26273

Sheet 2 of 5

SURVEY NOTES

This survey was made by the U. S. Department of Agriculture, Forest Service, for the purpose of restoring and establishing corners on the perimeter of Section 15, for establishing subdivisional corners within Section 15, and for locating and marking the boundaries of U. S. Government land on their perimeter and within Section 15, Township 34 North, Range 14 East, Fourth Principal Meridian, Forest County Wisconsin.

The U. S. Government lands in this section were acquired in 1934, 1936, 1937, and 1982.

The original Government subdivision survey of this township was made in 1859.

The corner positions recovered, restored, and established by this survey are marked by the monument described in the map legend.

The corner positions established were located to an accuracy of one part in 3000.

The bearings between corner positions are true bearings as determined by solar observations.

The field notes of this survey and a copy of this plat are on file in the Forest Supervisor's Office at Rhinelander, Wisconsin.

CORNERS RECOVERED AND RESTORED1. Corner to Sections 10, 11, 14, and 15, T.34N., R.14E.

Corner restored at the intersection of centerlines of State Highway 52 from the east and south and off an old fence line from the north. Corner marked by railroad spike in surface of road.

Corner References:

Reference Monument 2" x 36"	North	40.00 feet
Reference Monument 2" x 36"	South	40.00 feet
Power Pole #3414-10R1	N.33°W.	42.81 feet
Sugar 9"	N.26°E.	66.37 feet
Steel Sign Post 6'	North	39.00 feet

2. Corner to Sections 15, 16, 21, and 22, T.34N., R.14E.

Corner restored at the intersections of east, west, and south roads in a location in agreement with N. Smith's survey of Section 15.

Corner References:

"X" on Rock 2' x 4' x 3'	N.7°E.	54.20 feet
Power Pole #3414-15L7	N.53°E.	27.65 feet
Reference Monument 2" x 36"	S.39°W.	37.77 feet
Basswood 6"	N.42°W.	47.56 feet
Steel Sign Post	North	24.18 feet

3. Corner to Sections 9, 10, 15, and 16, T.34N., R.14E.

Corner restored by retracement of west line of Section 15 from N. Smith's quarter corner through his N 1/16 corner. Position falls in Zarling Lake.

Corner References:

A. Witness Corner	South	648.81 feet
Sugar 4"	South	17.00 feet
Sugar 6"	S.48°W.	18.54 feet
Balsam 6"	S.88°W.	32.34 feet
Steel Sign Post	North	0.70 feet
B. Witness Corner	North	965.30 feet
Sugar 8"	N.30°E.	13.30 feet
Sugar 8"	N.66°E.	19.20 feet
White Birch 12"	N.11°W.	11.60 feet
Steel Sign Post	North	1.00 feet

Stock No. 26273

Sheet 3 of 5

4. Quarter Corner to Sections 14 and 15, T.34N., R.14E.

Corner restored in the centerline of State Highway 52 and off old fence lines east and west. Location agrees with Smith's survey of Section 15. Corner location marked by railroad spike in road surface.

Corner References:

Witness Corner 2" x 36"	East	31.22 feet
Steel Sign Post	East	31.62 feet
Witness Corner 2" x 36"	West	26.87 feet
Steel Sign Post	West	27.17 feet

5. Quarter Corner to Sections 15 and 22, T.34N., R.14E.

Corner restored on the centerline of a town road and off old fence line north. Location agrees with Smith's survey of Section 15. Corner location marked by railroad spike in road surface.

Corner References:

Witness Corner 2" x 36"	North	21.03 feet
Sugar 13"	S.52°W.	68.72 feet
Sugar 12"	N.29°W.	53.40 feet
Steel Sign Post	North	21.73 feet

6. Quarter Corner to Sections 15 and 16, T.34N., R.14E.

Corner position found marked by an iron pipe in a mound of rock from which the remains of one original and one subsequent BT were found.

Corner References:

Sugar 4"	N.22°E.	40.43 feet
Sugar 4"	S.32°E.	20.31 feet
Yellow Birch 12"	S.39°W.	15.16 feet
Steel Sign Post	North	0.70 feet

7. Quarter Corner to Sections 10 and 15, T.34N., R.14E.

Corner restored by retracement of Smith's subdivision of Section 15 from the C₁ through the CN 1/16.

Corner References:

Balsam 5"	S.10°W.	31.17 feet
Steel Sign Post	East	1.11 feet
Steel Sign Post	Northwest	1.42 feet

8. Center Quarter Corner to Section 15.

Corner found marked by a post hole and BT stump from Smith's 1909 survey of Section 15.

Corner References:

Basswood 12"	N.14°E.	8.28 feet
Sugar 4"	S.23°W.	22.79 feet
Sugar 6"	N.54°W.	33.53 feet
Steel Sign Post	East	1.43 feet

9. North One-Sixteenth Corner to Sections 15 and 16.

Corner found marked by post point and post top and BT stump of Smith's 1909 survey of Section 15.

Corner References:

Sugar 4"	N.21°E.	54.36 feet
White Pine 20"	S.44°E.	31.43 feet
Black Ash 4"	N.21°W.	36.60 feet
Steel Sign Post	East	0.80 feet

Stock No. 26273

Sheet 4 of 5

10. Center North One-Sixteenth to Section 15.

Corner found marked by rotted post and BT stump of Smith's 1909 survey of Section 15.

Corner References:

Sugar	9"	S.51°E.	14.36 feet
Sugar	10"	S.65°W.	46.80 feet
Sugar	7"	N.85°W.	58.30 feet
Steel Sign Post		West	0.85 feet

11. Center East One-Sixteenth to Section 15.

Corner found marked by a 24" Sugar from Smith's 1909 survey of Section 15, which has overgrown the corner position. Sugar has been used as corner for many years by adjacent landowners.

Corner References:

A. Witness Corner 2" x 36"	West	2.33 feet
Sugar 4"	S.4°W.	60.00 feet
Sugar 10"	N.69°W.	21.08 feet
Hemlock 12"	North	16.52 feet
Steel Sign Post	West	1.00 feet
B. Witness Corner 2" x 36"	North	4.83 feet
Sugar 10"	N.77°W.	23.06 feet
Hemlock 12"	N.19°W.	11.76 feet
Steel Sign Post	North	1.20 feet

CORNERS ESTABLISHED1. East One-Sixteenth to Sections 10 and 15.

Corner established midpoint and on line between the northeast corner and the north quarter corner of Section 15.

Corner References:

Sugar	4"	S.20°W.	29.00 feet
White Ash	3"	N.70°W.	35.49 feet
Sugar	8"	S.47°W.	74.99 feet
Steel Sign Post		North	1.30 feet

2. West One-Sixteenth to Sections 15 and 22.

Corner established midpoint and on line between the southwest corner and the south quarter corner of Section 15.

Corner References:

Witness Corner 2" x 36"	North	31.76 feet
Sugar 9"	S.39°E.	42.00 feet
Sugar 5"	S.31°W.	31.09 feet
Steel Sign Post	North	32.70 feet

3. Center West One-Sixteenth to Section 15.

Corner established midpoint and on line between the center quarter corner and the west quarter corner of Section 15.

Corner References:

Sugar	5"	N.45°E.	42.94 feet
Sugar	5"	S.35°W.	24.14 feet
Sugar	5"	N.83°W.	6.84 feet
Steel Sign Post		East	0.80 feet

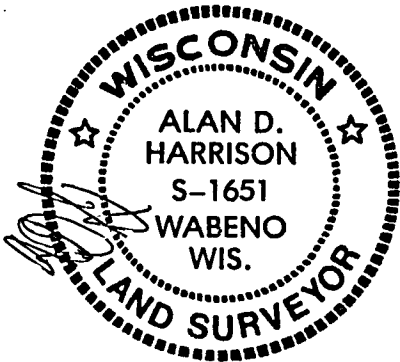
Stock No. 26273

Sheet 5 of 5

SURVEYOR'S AFFIDAVITState of Wisconsin }
County of Forest } SS

I, Alan D. Harrison, Cadastral Surveyor, USDA, Forest Service, and a registered surveyor in the State of Wisconsin, hereby certify that I have surveyed and subdivided Section 15, Township 34 North, Range 14 East, Fourth Principal Meridian, State of Wisconsin.

The plat map and the notes herewith are a correct representation of the land surveyed and divided. I have surveyed and subdivided said section in accordance with the rules for survey of the public lands and with the statutes of the State of Wisconsin.



Alan D. Harrison
Cadastral Surveyor, USDA, Forest Service
R.L.S., State of Wisconsin
Certificate S-1651

Plat Ready For Filing:

Dale S. Staege
District Ranger

Date of Survey: 1986

