

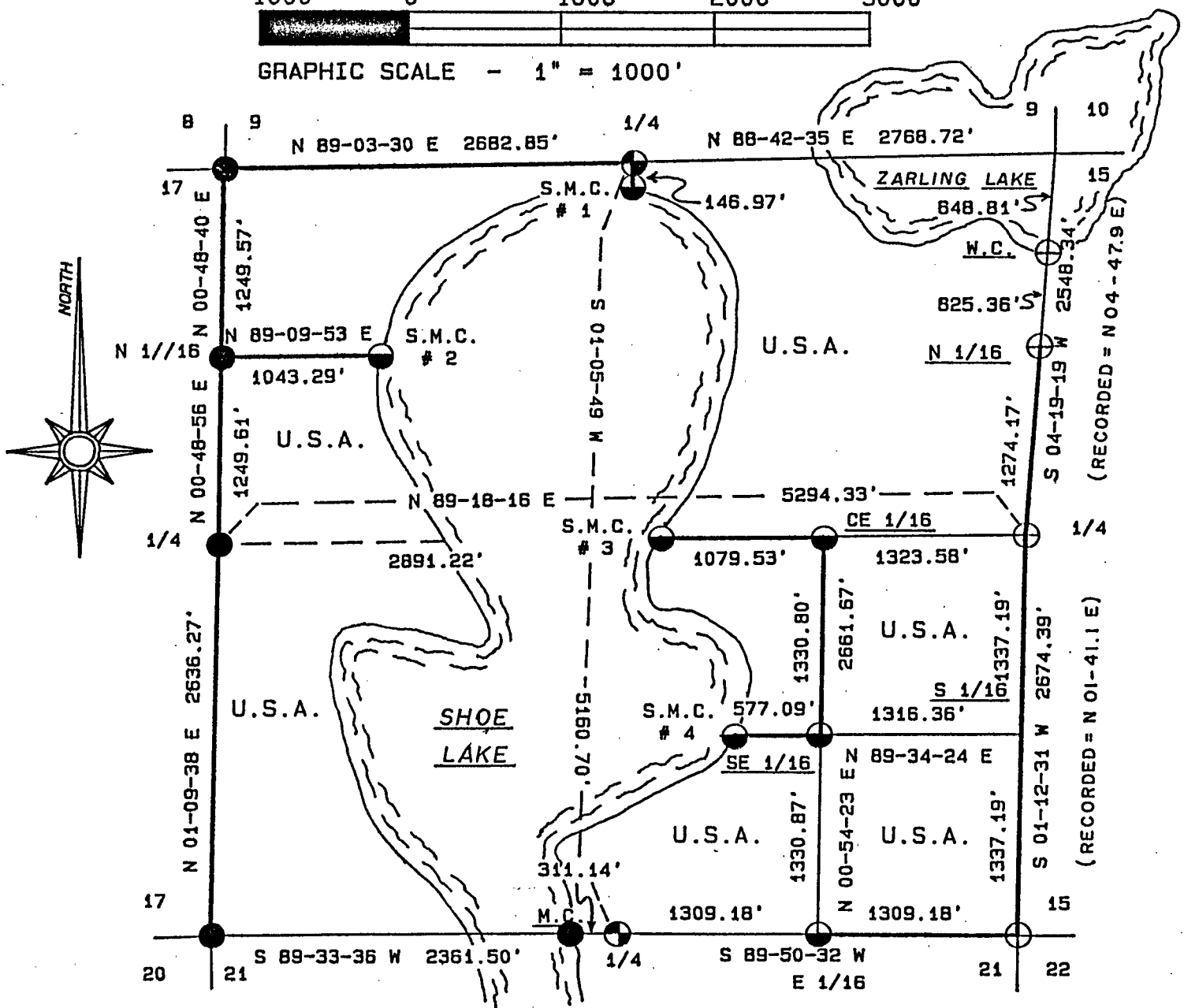
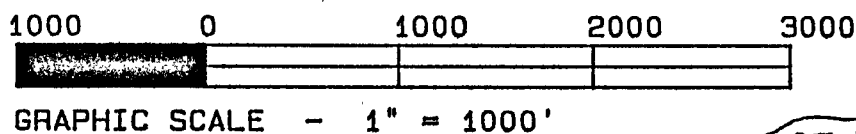
Stock No. 26273

COUNTY  
CLERK

SHEET 1 OF 4

# PLAT OF SURVEY U.S. GOVERNMENT LANDS

BEING GOV'T. LOTS 1, 3, 4, 7, 8, and 9; E 1/2, NE 1/4;  
and E 1/2, SE 1/4; SECTION 16; TOWNSHIP 34 NORTH; RANGE 14 EAST;  
FOURTH PRINCIPAL MERIDIAN;  
FOREST COUNTY, WISCONSIN



## LEGEND

- 2" BRASS CAPPED MONUMENT, FOUND IN PLACE.
- ⊕ 2 1/2" ALUMINUM MONUMENT, FOUND IN PLACE.
- ⊗ 2 1/2" X 36" ALUMINUM MONUMENT, SET THIS SURVEY.
- ⊙ 1 1/2" X 36" ALUMINUM MONUMENT, SET THIS SURVEY.
- MARKED BOUNDARY LINE OF U.S. GOVERNMENT LANDS.

FOREST CO SURVEY

FILE # 341416-19880113

DATE

SURVEY NOTES

This survey was made by the U. S. Department of Agriculture, Forest Service, for the purpose of restoring and establishing corners on the perimeter of Section 16, for establishing subdivisional corners within Section 16, and for locating and marking the boundaries of U. S. Government land on their perimeter and within Section 16, Township 34 North, Range 14 East, 4th Principal, Forest County, Wisconsin.

The U. S. Government lands in this section were acquired in 1969, 1984 and 1985.

The original government subdivision survey of this township was made in 1859, with a re-survey done in 1913 by: N. H. Smith of north line of Section 16.

The corner positions recovered, restored and established by this survey are marked by the monument described in the map legend.

The corner positions established were located to an accuracy of one part in 3000.

The bearings between corner positions are true bearings as determined by solar observations.

The field notes of this survey and a copy of this plat are on file in the Forest Supervisor's Office at Rhinelander, Wisconsin.

CORNERS RECOVERED OR RESTORED

1. Section Corner Common to Sections 8, 9, 16, and 17.  
Corner previously recovered by J. Resvick, R.L.S., Certificate on file in Forest County.
2. Section Corner Common to Sections 9, 10, 15 and 16.  
Corner previously recovered by A. Harrison, R.L.S. Certificate on file in Forest County.
3. Section Corner Common to Sections 15, 16, 21 and 22.  
Corner previously restored by A. Harrison, R.L.S. Certificate on file in Forest County.
4. Section Corner Common to Sections 16, 17, 20 and 21.  
Corner previously recovered by J. Resvick, R.L.S. Certificate on file in Forest County.
5. Quarter Corner Common to Sections 9 and 16.  
Corner previously recovered by A. Harrison, R.L.S. Certificate on file in Forest County.
6. Quarter Corner Common to Sections 15 and 16.  
Corner previously recovered by A. Harrison, R.L.S. Certificate on file in Forest County.
7. Quarter Corner Common to Sections 16 and 21.  
Corner position restored using N. Smith's 1913 survey distances in proportionate with measured distances between section corners east and west.  
Corner References:

Sugar	6"	S.35E.	21.13 feet
Sugar	7"	S.54W.	30.08 feet
Basswood	8"	N.04W.	5.96 feet
Steel Sign Post		Northeast	1.25 feet

8. Quarter Corner Common to Sections 16 and 17.  
 Corner previously recovered by J. Resvick, R.L.S. Certificate on file in Forest County.
9. Meander Corner on East Shore of Shoe Lake Common to Sections 16 and 21.  
 Corner previously recovered by J. Resvick, R.L.S. Certificate on file in Forest County.
10. North Sixteenth Corner Common to Sections 15 and 16.  
 Corner recovered from a previous survey. Set by A. Harrison, R.L.S.  
 Corner References:

Sugar	4"	N.21E.	54.36 feet
W. Pine	20"	S.44E.	31.43 feet
Ash	4"	N.21W.	36.60 feet
Steel Sign Post		East	0.80 feet

11. North Sixteenth Corner Common to Sections 16 and 17.  
 Corner recovered from a previous survey. Set by J. Resvick, R.L.S.  
 Corner References:

Sugar	6"	N.34E.	24.84 feet
Maple	7"	S.41E.	25.60 feet
Ash	10"	N.18W.	32.18 feet
Steel Sign Post		Northwest	0.50 feet

#### CORNERS ESTABLISHED

1. East One-Sixteenth to Sections 16 and 21.  
 Corner position established midpoint and on line between the south quarter and southeast section corner of Section 16.  
 Corner References:

Aspen	11"	S.60W.	43.26 feet
W. Birch	10"	N.48W.	42.32 feet
Steel Sign Post		Northwest	0.59 feet

2. Center East One-Sixteenth to Section 16.  
 Corner position established proportionately and on line between the west quarter and the east quarter corners of Section 16.  
 Corner References:

Sugar	8"	S.86E.	14.35 feet
Sugar	8"	N.32W.	35.28 feet
Steel Sign Post		Northeast	1.28 feet

3. Southeast One-Sixteenth to Section 16.  
 Corner position established at the intersection of the east and south one-sixteenth lines of Section 16.  
 Corner References:

W. Birch	8"	N.67E.	17.07 feet
Sugar	8"	N.01W.	23.57 feet
Steel Sign Post		Southeast	1.27 feet

4. Special Meander Corner #1 to Section 16.  
 Corner position established at the intersection of the north-south quarter line and the north shore of Shoe Lake in Section 16.  
 Corner References:

R. Maple	6"	N.22E.	26.53 feet
Hemlock	15"	N.29W.	44.87 feet
Steel Sign Post		North	0.40 feet

Stock No. 26273

Sheet 4 of 4

5. Special Meander Corner #2 to Section 16.

Corner position established at the intersection of the north one-sixteenth line and the west shore of Shoe Lake.

Corner References:

R. Maple	4"	N.64E.	3.56 feet
R. Maple	4"	N.78W.	24.65 feet
Steel Sign Post		West	1.44 feet

6. Special Meander Corner #3 to Section 16.

Corner position established at the intersection of the east-west quarter lines and the east shore of Shoe Lake.

Corner References:

Hemlock	13"	N.37E.	7.48 feet
Hemlock	8"	S.63E.	15.64 feet
Steel Sign Post		East	1.72 feet

7. Special Meander Corner #4 to Section 16.

Corner position established at the intersection of the south one-sixteenth line and the east shore of Shoe Lake.

Corner References:

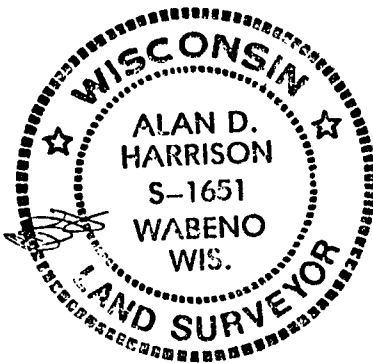
R. Maple	7"	N.71E.	7.99 feet
R. Maple	6"	S.09W.	37.93 feet
Steel Sign Post		East	1.04 feet

SURVEYOR'S AFFIDAVIT

State of Wisconsin ) SS  
County of Forest )

I, Alan D. Harrison, Land Surveyor, USDA, Forest Service and a Registered Land Surveyor in the State of Wisconsin, hereby certify that I have surveyed and subdivided Section 16, Township 34 North, Range 14 East, Fourth Principal Meridian, State of Wisconsin.

The plat map and the notes herewith are a correct representation of the land surveyed and divided. I have surveyed and subdivided said section in accordance with the rules for survey of the public lands and with the statutes of the State of Wisconsin.



*Alan D. Harrison*  
LAND SURVEYOR, U.S.D.A. Forest Service  
R.L.S. Number S-1651  
State of Wisconsin

Plat ready for filing:

*Dale R. Staeger*  
District Ranger

Date of Survey: 1988

