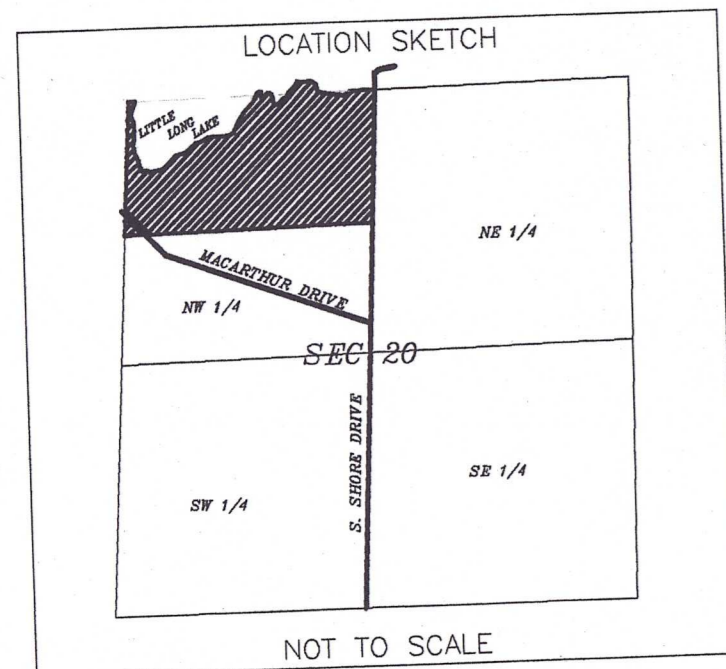


PRELIMINARY PLAT of LITTLE LONG LAKE

A STATE SUBDIVISION PLAT
LOCATED IN THE NW 1/4-NW 1/4, NE 1/4-NW 1/4, SEC 20 &
THE SE 1/4-SW 1/4, SEC 17, T34N, R14E,
TOWN OF FREEDOM, FOREST COUNTY, WISCONSIN

BEARINGS ARE
BASED ON THE
NORTH LINE OF
THE NW QUARTER
OF SECTION 20,
WHICH IS ASSUMED
TO BEAR N88°59'27"E.

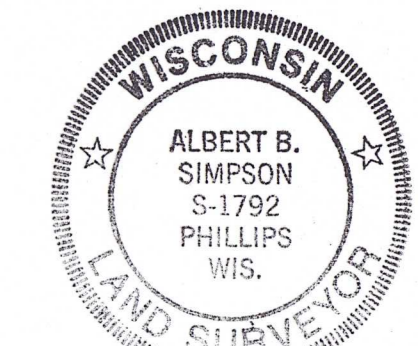


APPROVING AUTHORITIES:
FOREST COUNTY PLANNING AGENCY
TOWN OF FREEDOM
DEPARTMENT OF ADMINISTRATION

OBJECTING AUTHORITIES:
WISCONSIN DEPARTMENT OF NATURAL RESOURCES

DOA

FOREST CO SURVEYOR
FILE # 34147-20040224
DATE _____ BY _____

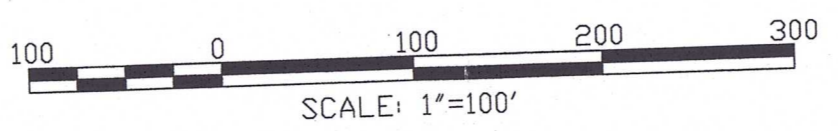


Albert B. Simpson

I HEREBY CERTIFY THAT THIS
SURVEY IS CORRECT TO THE
BEST OF MY KNOWLEDGE AND
BELIEF.

CURVE	LENGTH	RADIUS	CHORD	CHORD BEARING	DELTA ANGLE	TANGENT	TANGENT BEARING
C1	195.70	835.18	187.84	N88°59'27"E	4°30'33"	100.99	N88°59'27"E
C2	32.4	135.1	31.4	S79°59'39"W	4°30'33"	16.81	N77°28'54"E
C3	879.93	295.18	899.49	S33°37'44"W	48°37'44"	114.85	N58°56'52"E
C4	124.5	199.4	109.49	S33°37'44"W	11°30'34"	44.46	N77°28'54"E
C5	186.81	386.83	166.47	N69°27'21"E	14°30'34"	50.43	N58°56'52"E
C6	107.70	336.83	100.81	N69°27'21"E	8°47'44"	39.14	N58°56'52"E
C7	186.81	386.83	179.27	N69°27'21"E	8°47'44"	107.86	N58°56'52"E
C8	107.70	336.83	100.81	N69°27'21"E	8°47'44"	39.14	N58°56'52"E
C9	15.93	636.75	15.93	S33°37'44"W	9°37'48"	50.83	N55°23'04"E
C10	101.88	536.75	100.81	S33°37'44"W	9°37'48"	36.81	N55°23'04"E
C11	101.88	536.75	100.81	S33°37'44"W	9°37'48"	36.81	N55°23'04"E
C12	101.88	536.75	100.81	S33°37'44"W	9°37'48"	36.81	N55°23'04"E
C13	101.88	536.75	100.81	S33°37'44"W	9°37'48"	36.81	N55°23'04"E
C14	101.88	536.75	100.81	S33°37'44"W	9°37'48"	36.81	N55°23'04"E
C15	101.88	536.75	100.81	S33°37'44"W	9°37'48"	36.81	N55°23'04"E
C16	101.88	536.75	100.81	S33°37'44"W	9°37'48"	36.81	N55°23'04"E
C17	101.88	536.75	100.81	S33°37'44"W	9°37'48"	36.81	N55°23'04"E
C18	101.88	536.75	100.81	S33°37'44"W	9°37'48"	36.81	N55°23'04"E
C19	101.88	536.75	100.81	S33°37'44"W	9°37'48"	36.81	N55°23'04"E
C20	101.88	536.75	100.81	S33°37'44"W	9°37'48"	36.81	N55°23'04"E
C21	101.88	536.75	100.81	S33°37'44"W	9°37'48"	36.81	N55°23'04"E
C22	101.88	536.75	100.81	S33°37'44"W	9°37'48"	36.81	N55°23'04"E
C23	101.88	536.75	100.81	S33°37'44"W	9°37'48"	36.81	N55°23'04"E
C24	101.88	536.75	100.81	S33°37'44"W	9°37'48"	36.81	N55°23'04"E
C25	101.88	536.75	100.81	S33°37'44"W	9°37'48"	36.81	N55°23'04"E
C26	101.88	536.75	100.81	S33°37'44"W	9°37'48"	36.81	N55°23'04"E
C27	101.88	536.75	100.81	S33°37'44"W	9°37'48"	36.81	N55°23'04"E
C28	101.88	536.75	100.81	S33°37'44"W	9°37'48"	36.81	N55°23'04"E
C29	101.88	536.75	100.81	S33°37'44"W	9°37'48"	36.81	N55°23'04"E
C30	101.88	536.75	100.81	S33°37'44"W	9°37'48"	36.81	N55°23'04"E
C31	101.88	536.75	100.81	S33°37'44"W	9°37'48"	36.81	N55°23'04"E
C32	101.88	536.75	100.81	S33°37'44"W	9°37'48"	36.81	N55°23'04"E
C33	101.88	536.75	100.81	S33°37'44"W	9°37'48"	36.81	N55°23'04"E
C34	101.88	536.75	100.81	S33°37'44"W	9°37'48"	36.81	N55°23'04"E
C35	101.88	536.75	100.81	S33°37'44"W	9°37'48"	36.81	N55°23'04"E
C36	101.88	536.75	100.81	S33°37'44"W	9°37'48"	36.81	N55°23'04"E
C37	101.88	536.75	100.81	S33°37'44"W	9°37'48"	36.81	N55°23'04"E
C38	101.88	536.75	100.81	S33°37'44"W	9°37'48"	36.81	N55°23'04"E
C39	101.88	536.75	100.81	S33°37'44"W	9°37'48"	36.81	N55°23'04"E
C40	101.88	536.75	100.81	S33°37'44"W	9°37'48"	36.81	N55°23'04"E

LEGEND
 [Symbol] = WETLAND
 [Symbol] = SECTION, 1/4 OR 1/16 SECTION CORNER. SEE CORNER PERPETUATION FORM FILED IN THE FOREST COUNTY REGISTER OF DEEDS OFFICE ADDITIONAL INFORMATION.



THIS INSTRUMENT DRAFTED BY: *Walter L. Simpson*

REVISIONS
02-06-2004
02-10-2004
02-12-2004
02-24-2004

Northern EnvironmentalSM
Hydrologists • Engineers • Surveyors
330 South 4th Avenue, Park Falls, Wisconsin
PHONE: 800-498-3913 FAX: 715-762-1844
Website: www.northernenvironmental.com

TAYLOR INVESTMENT CORPORATION
LITTLE LONG LAKE
TOWN OF FREEDOM
FOREST COUNTY, WISCONSIN

WISCONSIN MICHIGAN ILLINOIS MINNESOTA IOWA
DATE: 02-04-2004 CREATED BY: NLS APPROVED BY: ABS

PROJECT NUMBER: TIC04-3701-0830 SHEET 1 OF 1

Received: 03/01/2004
24684
157

There are no objections to this PRELIMINARY PLAT with respect to the applicable provisions of Secs. 236.16 and 236.20, Wis. Stats. Any exceptions are included in our letter dated today.
Certified **MARCH 29**, 2004
Donna R. [Signature]
Department of Administration