

Stock No. 26273

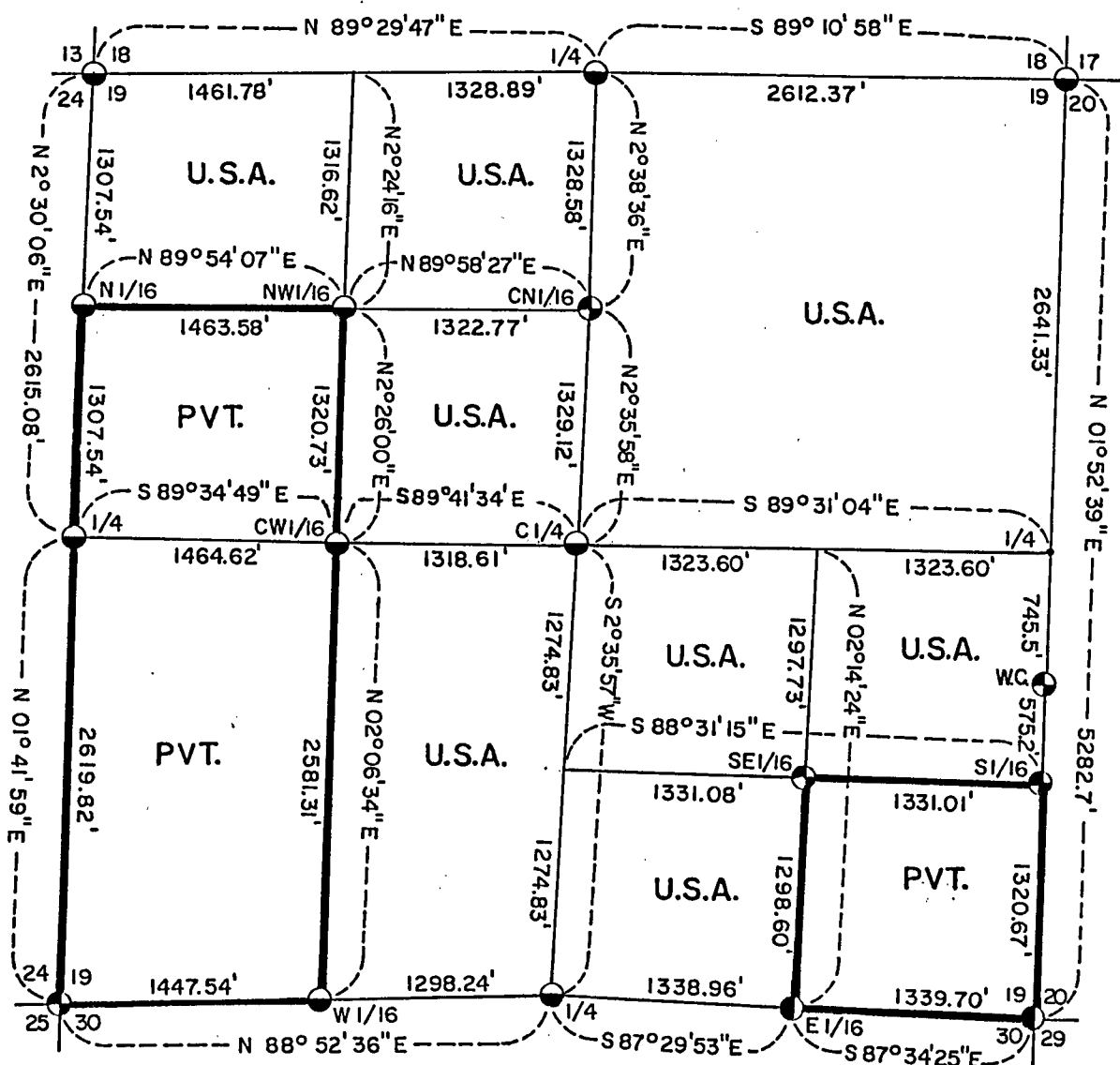
COUNTY  
CLERK

SHEET 1 OF 5

# PLAT OF SURVEY U.S. GOVERNMENT LAND

Being the NW1/4-NW1/4, E1/2-NW1/4; NE1/4; NE1/4-SE1/4,  
W1/2-SE1/4, and the E1/2-SW1/4, Section 19  
Township 34 North, Range 14-15 East, Fourth Principal Meridian  
FOREST COUNTY, WISCONSIN

1000 0 1000  
SCALE IN FEET



## LEGEND

- 2" Aluminum Monument, 30" Long
- ⊕ 2" Aluminum Monument, 36" Long
- ⦿ 2" Aluminum Monument, 60" Long
- Marked Boundary Line of U.S. Government Land

FOREST CO SURVEYOR

FILE # 341419-19860320

DATE \_\_\_\_\_ BY \_\_\_\_\_

Conversion Factors:  
Feet to Meters - 0.304801  
Meters to Feet - 3.280833

Stock No. 26273

Sheet 2 of 5

SURVEY NOTES

This survey was made by the U. S. Department of Agriculture, Forest Service, for the purpose of restoring and establishing corners on the perimeter of Section 19, for establishing subdivisional corners within Section 19, and for locating and marking the boundaries of U. S. Government land on the perimeter and within Section 19, Township 34 North, Range 15 East, Fourth Principal Meridian, Forest County, Wisconsin.

The U. S. Government lands in this section were acquired between 1934 and 1945.

The original Government subdivision survey of this township was made in 1857 and 1859. In 1984, a subsequent survey by J. A. Melendy was located. Those corners recovered from the Melendy survey were used.

The corner positions recovered, restored, and established by this survey are marked by the monument described in the map legend.

The corner positions established were located to an accuracy of one part in 3000.

The bearings between corner positions are true bearings as determined by solar observations.

The field notes of this survey and a copy of this plat are on file in the Forest Supervisor's Office at Rhinelander, Wisconsin.

CORNERS RECOVERED AND RESTORED1. Section Corner to Sections 13-18-19-24, T.34N., R.14-15E.

Corner position restored from a living Yellow Birch bearing tree placed in 1909 by J. A. Melendy. Melendy's notes state that this position was restored by W. L. Harris.

Corner References:

Sugar Maple	12"	N.27°E.	34.36 feet
Sugar Maple	6"	N.84°E.	65.20 feet
Sugar Maple	12"	S.61°W.	23.13 feet
Sugar Maple	4"	N.30°W.	55.25 feet
Steel Sign Post		South	7.80 feet

2. Section Corner to Sections 17-18-19-20, T.36N., R.15E.

Corner position restored by double proportionate measure from quarter corner one-half mile north and east and section corners one mile west and south. Corner falls in roadway.

Corner References:

Sugar Maple	5"	N.89°E.	47.07 feet
Yellow Birch	5"	S.40°E.	31.38 feet
Hickory	8"	West	95.90 feet
Sugar Maple	5"	N.28°W.	50.90 feet
Steel Sign Post		West	16.60 feet

3. Section Corner to Sections 19-20-29-30, T.34N., R.14-15E.

Corner position found marked by a rotted wood post with evidence of original bearing tree remains.

Corner References:

Black Spruce	6"	N.19°E.	20.30 feet
Cedar	6"	S.48°E.	21.51 feet
Black Spruce	6"	S.6°E.	9.89 feet
Black Spruce	6"	N.67°W.	17.55 feet
Steel Sign Post		North	4.40 feet

Stock No. 26273

Sheet 3 of 5

4. Section Corner to Sections 19-24-25-30, T.34N., R.14-15E.

Corner position restored from original bearing tree remains.

Corner References:

Boulder with "X" on east side and iron pipe		S.89°57'W.	66.90 feet
Sugar Maple	8"	N.37°E.	33.68 feet
Sugar Maple	5"	S.23°E.	40.26 feet
Red Maple	6"	S.65°W.	37.68 feet
Sugar Maple	4"	N.2°W.	19.78 feet
Steel Sign Post		East	.70 feet

5. Quarter Corner to Sections 19 and 30, T.34N., R.15E.

Corner position was restored from evidence of the original bearing trees and "X" on boulder by J. A. Melendy's survey of 1909.

Corner References:

Sugar Maple	8"	N.61°W.	80.18 feet
"X" on 5' x 6' x 3' Boulder		S.74°W.	14.27 feet
"X" on 3' x 3' x 2' Boulder		N.20°E.	24.08 feet
Steel Sign Post		East	3.30 feet

6. Quarter Corner to Sections 19 and 20, T.34N., R.15E.

Corner position restored by single proportion between the section corners north and south and witnessed south on section line 745.50 feet.

Witness Corner References:

Sugar Maple	4"	S.33°E.	46.75 feet
Sugar Maple	7"	S.7°W.	60.76 feet
Basswood	14"	N.75°W.	49.27 feet
Steel Sign Post		East	1.80 feet

7. Quarter Corner to Sections 18 and 19, T.34N., R.15E.

Corner position restored from remains of original bearing tree and post hole. Melendy's survey of the north-south quarter line supports this position.

Corner References:

White Oak	8"	N.13°E.	29.25 feet
White Oak (Twin)	6"	S.45°E.	18.89 feet
White Oak (Twin)	8"	S.58°W.	50.96 feet
Steel Sign Post		Northwest	.80 feet

8. Quarter Corner to Sections 19 and 24, T.34N., R.14-15E.

Corner position restored from original bearing tree evidence and evidence of J. A. Melendy's bearing tree remains of 1909. Post point and stones by Melendy in place.

Corner References:

Sugar Maple	10"	N.35°E.	8.91 feet
Sugar Maple	6"	S.28°E.	25.90 feet
Sugar Maple	10"	N.80°E.	83.42 feet
Stefan's 1980 Position		N.88°12'44"W.	39.35 feet
Steel Sign Post		South	2.00 feet

9. Center Quarter Corner of Section 19.

Corner position recovered from J. A. Melendy's survey of 1909. Mound of stone with post hole supported by bearing tree stump holes.

Corner References:

Basswood	10"	N.10°W.	22.18 feet
Sugar Maple	8"	S.32°E.	39.50 feet
Sugar Maple	6"	N.80°W.	55.39 feet
Steel Sign Post		Northeast	1.70 feet

Stock No. 26273

Sheet 4 of 5

10. Northwest Sixteenth Corner.

Corner position restored from J. A. Melendy's reference mark ("X" on a stone). Corner is a 12" x 12" stone with "X" on surface, in roadway.  
Corner References:

"X" on 2' x 3' x 18" Boulder	N.88°E.	39.18	feet
White Ash 10"	S.56°W.	45.17	feet
Sugar Maple 10"	N.72°W.	34.02	feet
Steel Sign Post	West	17.80	feet
Witness Corner	West	20.00	feet

11. Center West Sixteenth Corner.

Corner position recovered--post hole, supported by remains of bearing trees from J. A. Melendy's 1909 survey.  
Corner References:

Hickory 6"	N.8°W.	18.28	feet
Sugar Maple 7"	S.3°E.	51.50	feet
Yellow Birch 8"	N.57°W.	39.86	feet
Steel Sign Post	South	1.30	feet

12. East Sixteenth Corner to Sections 19 and 30.

Corner position restored from J. A. Melendy's survey references--an "X" on a boulder and two Cedar bearing trees.  
Corner References:

Sugar Maple 6"	N.65°E.	21.30	feet
Sugar Maple 4"	N.41°W.	22.64	feet
"X" on 4' x 6' x 2' Boulder	S.10°W.	6.84	feet
Steel Sign Post	North	1.60	feet

13. Center North Sixteenth Corner.

Corner position recovered at post hole in mound of stone, supported by Melendy's 1909 survey.  
Corner References:

Sugar Maple 7"	S.67°E.	27.65	feet
Basswood 6"	S.61°W.	32.46	feet
Sugar Maple 7"	N.28°W.	36.93	feet
Steel Sign Post	Northeast	1.20	feet

CORNERS ESTABLISHED1. North Sixteenth Corner to Sections 19 and 24, T.34N., R.14-15E.

Corner position established on line and midpoint between the west quarter and northwest section corner of Section 19.  
Corner References:

Sugar Maple 6"	N.41°E.	44.60	feet
Sugar Maple 11"	S.79°W.	61.22	feet
White Ash 9"	N.72°W.	63.15	feet
Steel Sign Post	South	1.20	feet

2. West Sixteenth Corner to Sections 19 and 30.

Corner position established at proportionate distance and on line between the south quarter and southwest corner to Section 19.  
Corner References:

Sugar Maple 8"	N.47°E.	23.19	feet
Sugar Maple 14"	S.15°E.	55.85	feet
Sugar Maple 8"	S.23°W.	62.10	feet
Steel Sign Post	North	2.80	feet

Stock No. 26273

Sheet 5 of 5

3. South Sixteenth Corner to Sections 19 and 20, T.34N., R.15E.  
 Corner position established midpoint and on line between the east quarter and southeast corner of Section 19.  
 Corner References:

Basswood	5"	N.86°E.	13.48 feet
Sugar Maple	7"	S.38°E.	17.18 feet
Sugar Maple	26"	N.33°W.	4.75 feet
Steel Sign Post		South	1.30 feet

4. Southeast Sixteenth Corner.  
 Corner position established at the intersection of the east and south sixteenth lines to Section 19.  
 Corner References:

Sugar Maple	6"	N.45°E.	6.38 feet
Basswood	7"	S.42°E.	15.64 feet
Basswood	8"	S.50°W.	37.32 feet
Steel Sign Post		South	1.30 feet

SURVEYOR'S AFFIDAVIT

State of Wisconsin SS  
 County of Forest

I, Milo E. Stefan, Cadastral Surveyor, U. S. Forest Service and a registered surveyor in the State of Wisconsin, hereby certify that I have surveyed and subdivided Section 19, Township 34 North, Range 15 East, Fourth Principal Meridian, State of Wisconsin.

The plat map and the notes herewith are a correct representation of the land surveyed and divided. I have surveyed and subdivided said section in accordance with the rules for survey of the public lands and with the statutes of the State of Wisconsin.



*Milo E. Stefan*

Cadastral Surveyor, U. S. Forest Service  
 R.L.S., State of Wisconsin  
 Certificate S-1558

Plat Ready For Filing:

*Ray. B. Bunker*  
 District Ranger

Date of Survey: 1980-1985

