

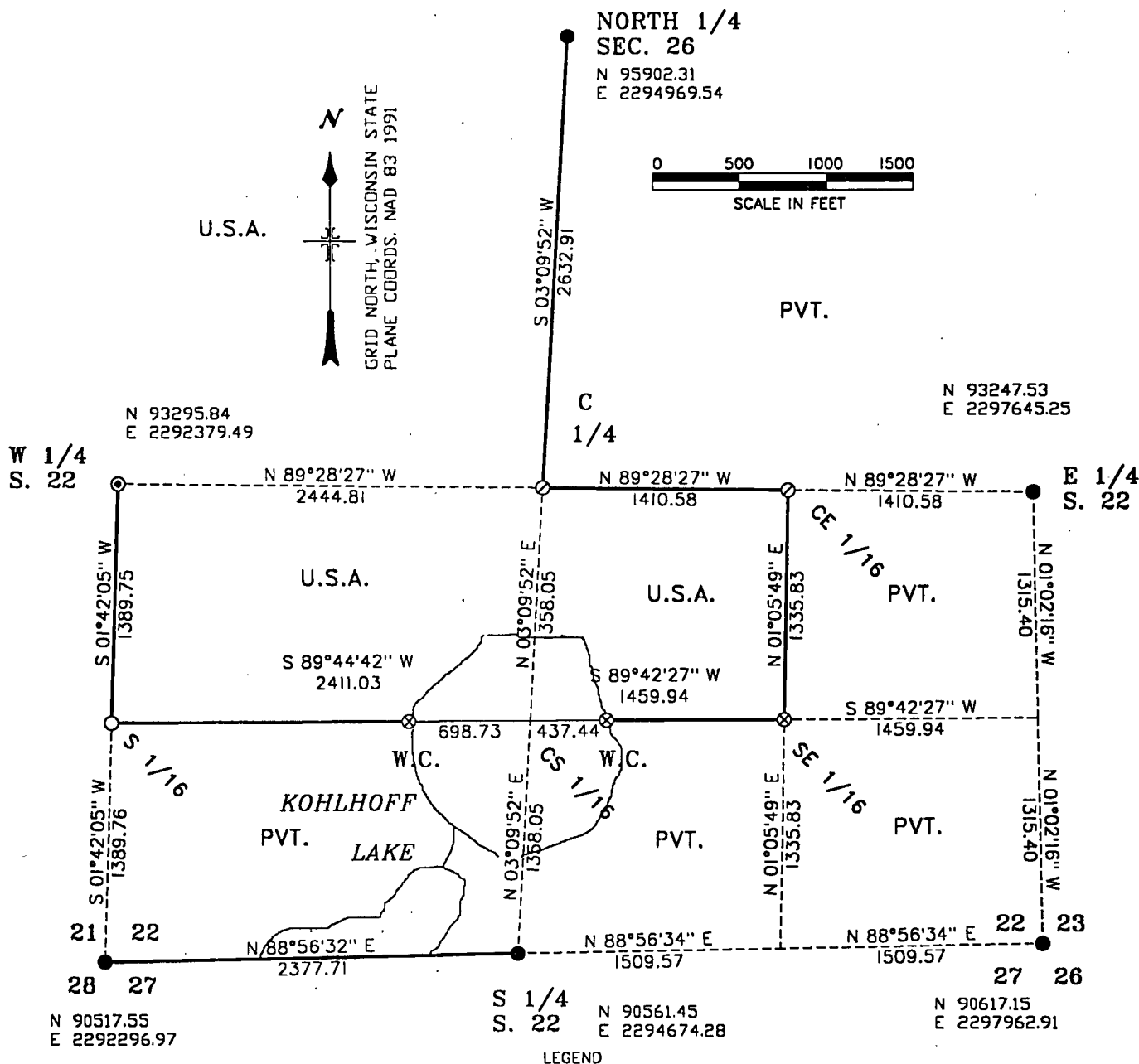
HCM³ Miller
Print Evolutionaries

Stock No. 26273

9-11-14

MAP OF SURVEY

U.S. GOVERNMENT LANDS BEING THE NORTHWEST 1/4,
THE NORTH 1/2 SOUTHWEST 1/4, AND THE NW 1/4 SE 1/4,
OF SECTION 22, TOWNSHIP 34 NORTH, RANGE 14 EAST,
FOREST COUNTY, WISCONSIN.



- RECOVERED MONUMENT PREVIOUSLY PERPETUATED TO F.S. STANDARD.
- ◎ RECOVERED RAIL ROAD SPIKE SET BY RLS #2820.
- SET A 2" X 36" ALUMINUM PIPE MONUMENT WITH A 3" ALUM. CAP.
- ⊙ SET A 1" X 36" ALUMINUM DRIVE MONUMENT WITH A 2" ALUM. CAP.
- ⊗ SET A 1" X 60" ALUMINUM DRIVE MONUMENT WITH A 2" ALUM. CAP.

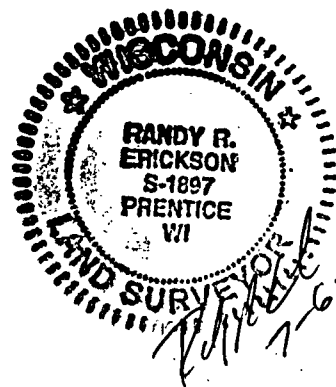
— LINE MARKED TO FOREST SERVICE STANDARD.

(N 263054) WISCONSIN NORTH ZONE, STATE PLANE COORDINATES.

FOREST CO SURVEYOR

FILE # 341422-2011.0706

DATE _____ BY _____





Stock No. 26273

SURVEY NOTES SECTION 22
TOWNSHIP 34 NORTH, RANGE 14 EAST
FOREST COUNTY, WISCONSIN

THIS SURVEY WAS MADE BY THE U.S.D.A FOREST SERVICE AT THE REQUEST OF THE LAONA LAKEWOOD DISTRICT RANGER OF THE CHEQUAMEGON-NICOLET NATIONAL FOREST. THE PURPOSE OF THIS SURVEY WAS TO RECOVER, RESTORE, ESTABLISH, MARK AND PERPETUATE THE CORNERS AND BOUNDARIES OF NATIONAL FOREST LANDS ON THE PERIMETER AND WITHIN SECTION 22, TOWNSHIP 34 NORTH, RANGE 14 EAST, FOREST COUNTY, WISCONSIN.

THE ORIGINAL GOVERNMENT SURVEY WAS MADE IN 1857 BY ALFRED MILLARD. IN 1910 AND 1911 N. SMITH RETRACED THE SOUTH LINE OF SECTION 22. IN 1995 KIM PRITZLAFF, RLS #1259 RETRACED THE SOUTH LINE OF SECTION 22, UNDER CONTRACT TO THE U.S. FOREST SERVICE.

THIS SURVEY WAS MADE USING STATIC GPS. BEARINGS AND DISTANCES ARE GRID, BASED ON WISCONSIN NORTH ZONE STATE PLANE COORDINATES. TRUE LINE TRAVERSES WERE RUN USING AN ELECTRONIC TOTAL STATION INSTRUMENT. ERROR OF CLOSURE BETWEEN GPS CONTROLLED POINTS WAS BETTER THAN 1:5000.

BEARING TREES ARE BLAZED SCRIBED AND PAINTED RED. MEASUREMENT TO BEARING TREES ARE TO ALUMINUM NAILS IN THE SIDES OF TREES ABOVE THE CENTER OF THE ROOT CROWN:

NO NOTABLE ENCROACHMENTS WERE FOUND ON NATIONAL FOREST LANDS.

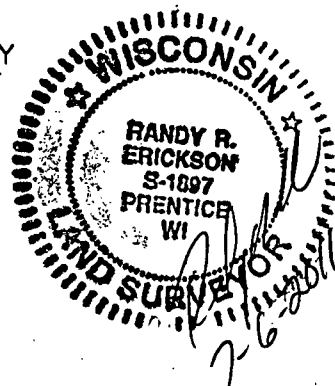
SURVEY WAS MADE IN MAY AND JUNE OF 2010.

SURVEY CREW: DAVID BROWNELL, CREW CHIEF; JIMMY GUMM, SAWYER.

CORNERS RECOVERED

1. NORTH QUARTER CORNER SECTION 22, T 34 N, R 14 E.
RECOVERED MONUMENT AS DESCRIBED ON U.S. PUBLIC LAND SURVEY MONUMENT RECORD BY R.L.S. #1651, DATED 11-14-1986, FOREST SERVICE RECORDS.
2. WEST QUARTER CORNER, SECTION 22, T 34 N, R 14 E.
RECOVERED A RAIL ROAD SPIKE SET 12" BELOW THE ROAD SURFACE OF KOHLHOFF LANE. SPIKE SET BY R.L.S. #2820 DURING A RECENT SURVEY. POSITION LINES UP WITH CENTER LINES OF TOWN ROADS, NORTH, SOUTH, AND WEST. ATTEMPTS WERE MADE TO CONTACT THE SURVEYOR ABOUT A MONUMENT TIE SHEET AND REFERENCES, BUT TO NO AVAIL. ADDED NEW BEARING TREES:

SUGAR MAPLE	12"	N 35° E	78.20 FEET
SUGAR MAPLE	18"	S 61° E	56.74 FEET
STEEL SIGN POST		EAST	19.00 FEET
3. EAST QUARTER CORNER SECTION 22, T 34 N, R 14 E.
RECOVERED MONUMENT AS DESCRIBED ON CERTIFIED LAND CORNER RESTORATION FORM BY RLS #802, JEAN RESVICK, DATED 8-03-1964, U.S. FOREST SERVICE RECORDS.
4. SOUTHWEST CORNER SECTION 22, T 34 N, R 14 E.
RECOVERED MONUMENT AS DESCRIBED ON U.S. PUBLIC LAND SURVEY MONUMENT RECORD BY RLS #1651, DATED 10-26-1994, U.S. FOREST SERVICE RECORDS.
5. SOUTH QUARTER CORNER SECTION 22, T 34 N, R 14 E.
RECOVERED MONUMENT AS DESCRIBED ON U.S. PUBLIC LAND SURVEY MONUMENT RECORD BY RLS #1651, DATED 10-26-1994, U.S. FOREST SERVICE RECORDS.
6. SOUTHEAST CORNER SECTION 22, T 34 N, R 14 E.
RECOVERED MONUMENT AS DESCRIBED ON U.S. PUBLIC LAND SURVEY MONUMENT RECORD BY RLS #1651, DATED 10-26-1994, U.S. FOREST SERVICE RECORDS.





Stock No. 26273

CORNERS ESTABLISHED

1. CENTER QUARTER CORNER SECTION 22, T 34 N, R 14 E.
ESTABLISHED CORNER AT INTERSECTION OF STRAIGHT LINES BETWEEN
OPPOSING 1/4 CORNERS ON THE PERIMETER OF SECTION 22. SET A
1" X 36" ALUMINUM DRIVE MONUMENT, 30 INCHES IN THE GROUND.

MARKED BEARING TREES:

SUGAR MAPLE	12"	WEST	13.56 FEET
SUGAR MAPLE	10"	N 34° W	18.00 FEET
STEEL SIGN POST		SOUTHWEST	0.75 FEET

2. CENTER EAST 1/16 CORNER SECTION 22, T 34 N, R 14 E.
ESTABLISHED CORNER MID POINT ON LINE BETWEEN THE CENTER 1/4
AND EAST 1/4 CORNERS OF SECTION 22. SET A 1" X 36" ALUMINUM
DRIVE MONUMENT 30" IN THE GROUND. MARKED BEARING TREES:

SUGAR MAPLE	14"	S 56° W	32.25 FEET SD
SUGAR MAPLE	12"	N 82° W	42.84 FEET SD
STEEL SIGN POST		SOUTHWEST	0.60 FEET

3. CENTER SOUTH 1/16 CORNER SECTION 22, T 34 N, R 14 E.
ESTABLISHED CORNER MID POINT ON LINE BETWEEN THE CENTER 1/4
AND SOUTH 1/4 CORNERS OF SECTION 22. CORNER FALLS IN
KOHLOFF LAKE. SET ON LINE WITNESS CORNERS; WEST 698.73
FEET AND EAST 437.44 FEET. WITNESS CORNERS ARE MONUMENTED
WITH 1" X 60" ALUMINUM DRIVE MONUMENTS DRIVEN FLUSH.

BEARING TREES TO WITNESS CORNER ON WEST SIDE OF LAKE:

TAMARACK	7"	S 26° E	10.45 FEET
TAMARACK	9"	S 62° W	47.67 FEET
STEEL SIGN POST		NORTH	0.55 FEET

BEARING TREES TO WITNESS CORNER ON EAST SIDE OF LAKE:

TAMARACK	8"	N 73° E	33.02 FEET
TAMARACK	8"	S 70° E	28.64 FEET
STEEL SIGN POST		WEST	1.20 FEET

4. SOUTH 1/16 CORNER SECTIONS 21 AND 22, T 34 N, R 14 E.
ESTABLISHED CORNER MID POINT ON LINE BETWEEN THE WEST 1/4
AND THE SOUTHWEST CORNER OF SECTION 22. SET A 2 1/2" X 36"
ALUMINUM PIP MONUMENT 6" BELOW GROUND LEVEL. MARKED BTS:

SUGAR MAPLE	8"	N 45° E	51.52 FEET
RED PINE	8"	S 58° E	34.20 FEET
STEEL SIGN POST		EAST	3.75 FEET

5. SOUTHEAST 1/16 CORNER SECTION 22, T 34 N, R 14 E.
ESTABLISHED CORNER AT INTERSECTION OF STRAIGHT LINES BETWEEN
OPPOSING 1/16 CORNERS ON THE PERIMETER OF THE SOUTHEAST 1/4
OF SECTION 22. SET A 1" X 60" ALUMINUM DRIVE MONUMENT FLUSH
WITH THE SWAMP. MARKED BEARING TREES:

TAMARACK	10"	N 45° E	17.10 FEET
TAMARACK	10"	N 32° W	7.53 FEET
STEEL SIGN POST		NORTHWEST	0.40 FEET

SURVEYORS AFFIDAVIT

STATE OF WISCONSIN)
COUNTY OF FOREST) SS

I RANDY R. ERICKSON, LAND SURVEYOR FOR THE U.S.D.A. FOREST
SERVICE AND A REGISTERED LAND SURVEYOR IN THE STATE OF WISCONSIN
DO HEREBY CERTIFY THAT I HAVE SUPERVISED THE SURVEY AND
SUBDIVISION OF SECTION 22, TOWNSHIP 34 NORTH, RANGE 14 EAST, 4TH
P.M., FOREST COUNTY, WISCONSIN. THE MAP OF SURVEY AND
ACCOMPANYING NOTES ARE A CORRECT AND ACCURATE REPRESENTATION OF
THE SURVEY TO THE BEST OF MY KNOWLEDGE AND BELIEF.

RANDY R. ERICKSON
WIS. REGISTERED LAND SURVEYOR #1897

DATE: 7-06-2011

