

Stock No. 26273

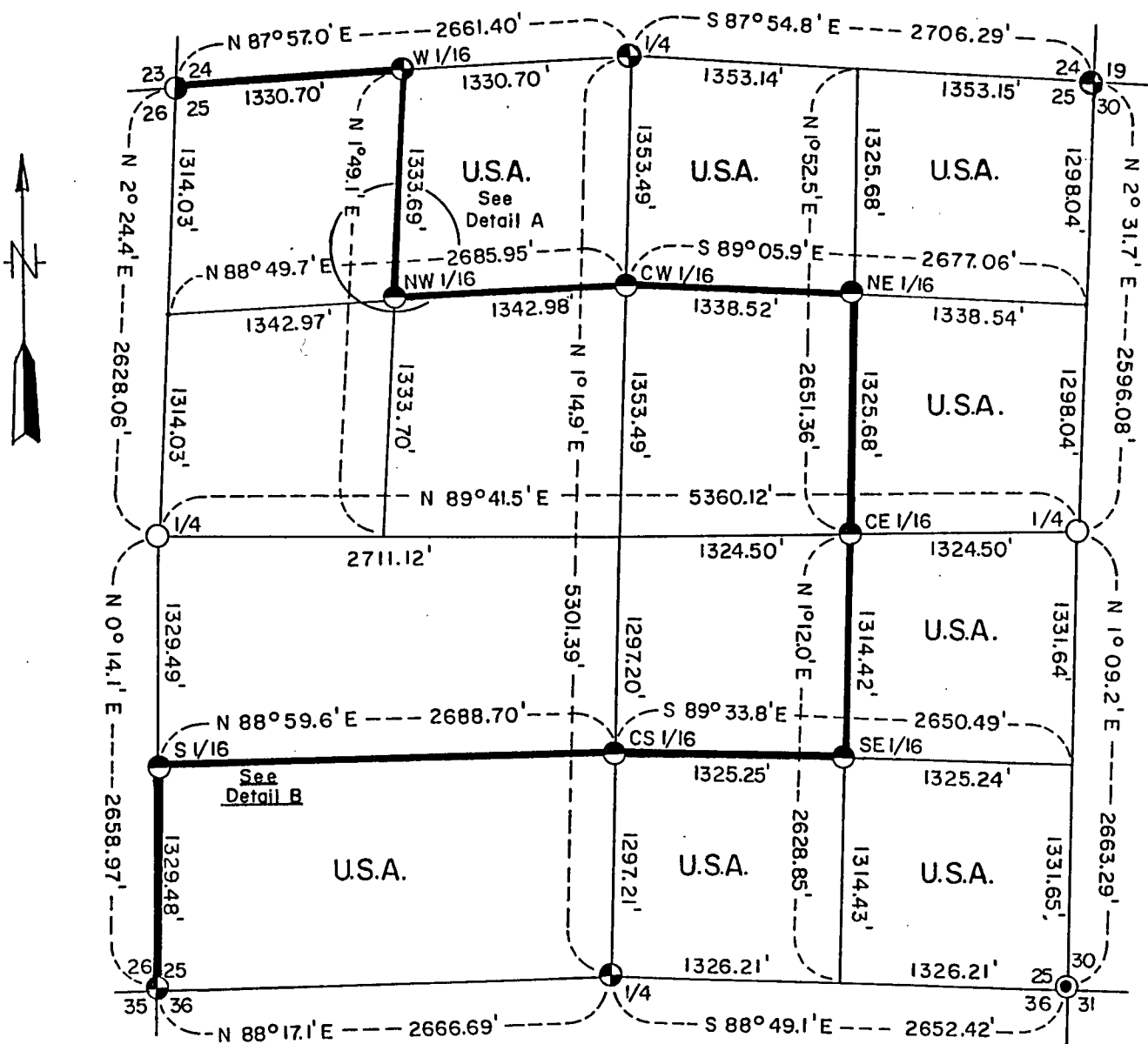
SHEET 1 OF 5

PLAT OF SURVEY U.S. GOVERNMENT LAND

Being the E1/2 and NW1/4, NE1/4; E1/2 and SW1/4, SE1/4; S1/2, SW1/4;
and NE1/4, NW1/4 of Section 25

Township 34 North, Range 14 East, Fourth Principal Meridian
FOREST COUNTY, WISCONSIN

1000 0 1000
SCALE IN FEET



LEGEND

- 1-1/2" x 36" Aluminum Monument
- Forest County Monument
- 2-1/2" x 36" Aluminum Monument
- 2-1/2" x 30" Aluminum Monument
- ⊙ 2" x 60" Galvanized Iron Pipe Filled with Concrete, with Brass Cap
- Marked Boundary Lines of U.S. Government Lands

FOREST CO SURVEYOR

FILE # 341425-19880217

DATE _____ BY _____

Conversion Factor:

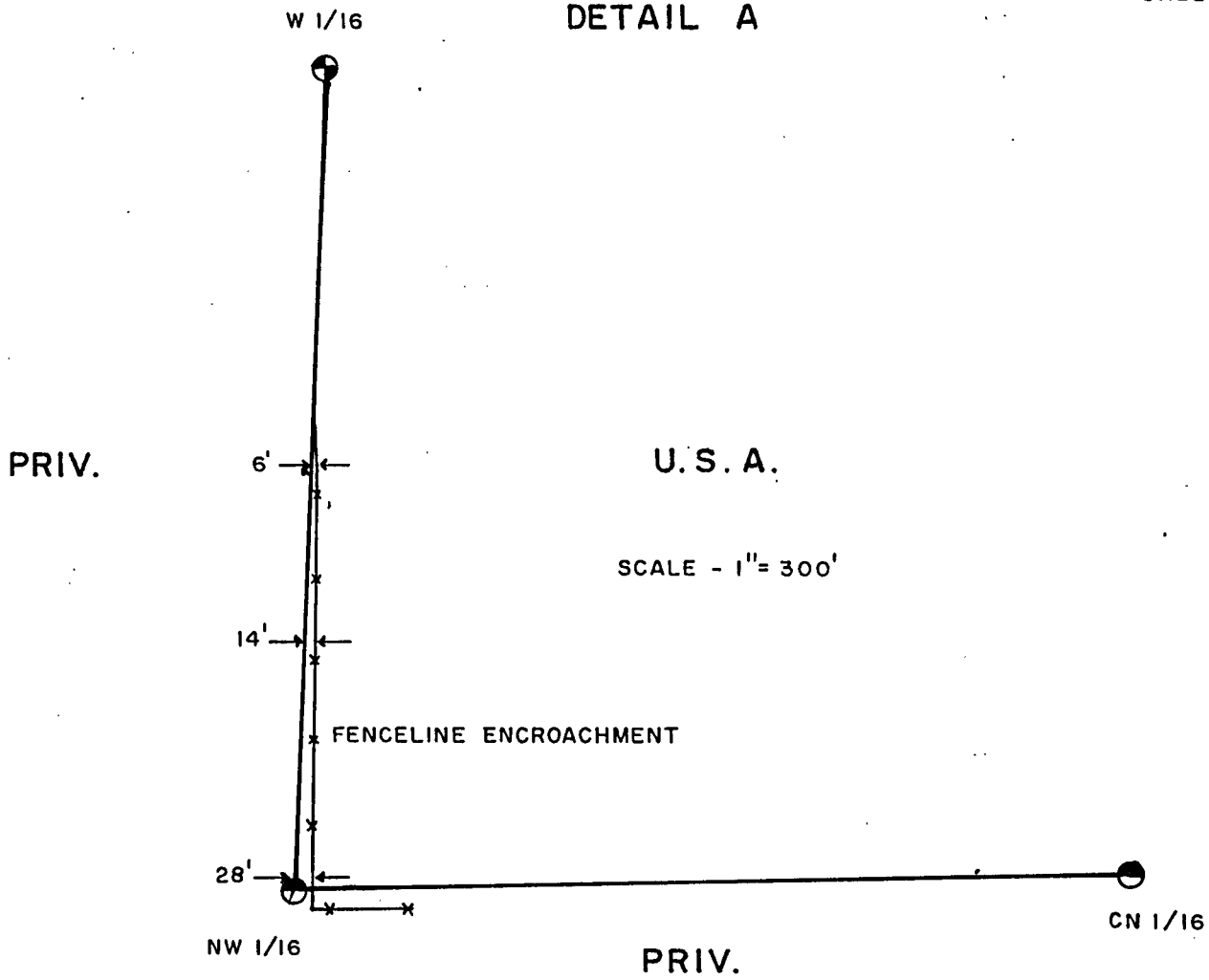
Feet to Meters-0.304801

Meters to Feet-3.280833

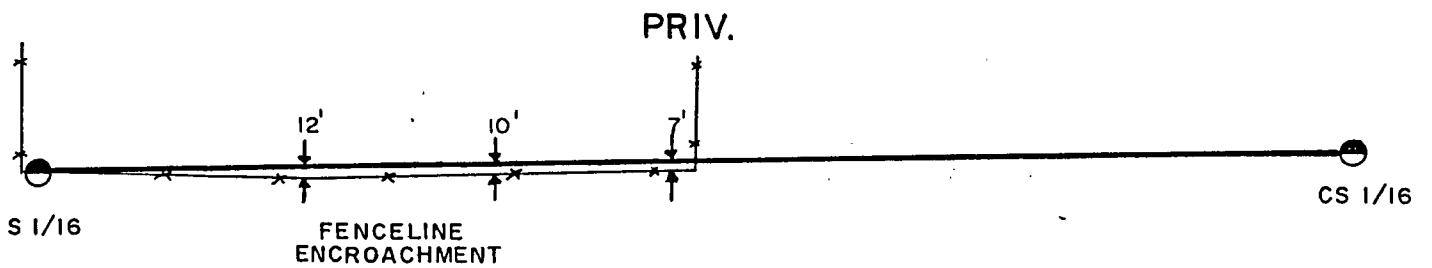
Stock No. 26273

SHEET 2 OF 5

DETAIL A



DETAIL B



Stock No. 26273

Sheet 3 of 5

SURVEY NOTES

This survey was made by the U. S. Department of Agriculture, Forest Service, for the purpose of restoring and establishing corners on the perimeter of Section 25, for establishing subdivisional corners within Section 25, and for locating and marking the boundaries of U. S. Government land on their perimeter and within Section 25, Township 34 North, Range 14 East, Fourth Principal Meridian, Forest County, Wisconsin.

The U. S. Government lands in this section were acquired in 1934, 1935, and 1936.

The original Government subdivision survey of this township was made in 1859. With retracement surveys done by J. J. Melendy in 1907 and N. Smith in 1907 and 1922.

The corner positions recovered, restored, and established by this survey are marked by the monument described in the map legend.

The corner positions established were located to an accuracy of one part in 3000.

The bearings between corner positions are true bearings as determined by solar observations.

The field notes of this survey and a copy of this plat are on file in the Forest Supervisor's Office at Rhinelander, Wisconsin.

CORNERS RECOVERED AND RESTORED

1. Section Corner to Sections 23, 24, 25, and 26, T.34N., R.14E.
Corner position found marked by a Forest County monument as set by Thomas R. Arnott, R.L.S. 887. Certificate on file in Forest County.
New Corner References:

Spruce	5"	N.73°E.	25.94 feet
Spruce	4"	S.51°E.	6.92 feet
Tamarack	7"	S.28°W.	31.96 feet
Tamarack	5"	N.10°W.	7.54 feet
Steel Sign Post		West	0.74 feet

2. Section Corner to Sections 24, 19, 25, and 30, T.34N., R.14-15E.
Corner position found marked by a Forest Service monument as set by Milo Stefan, R.L.S. 1558. Certificate on file in Forest County.
3. Section Corner to Sections 25, 30, 36, and 31, T.34N., R.14-15E.
Corner position found marked by a Forest Service monument as set by J. Resvick, R.L.S. 802. Certificate on file in Forest County.
4. Section Corner to Sections 26, 25, 35, and 36, T.34N., R.14E.
Corner position found marked by a Forest Service monument as set by Milo Stefan, R.L.S. 1558. Certificate on file in Forest County.
5. Quarter Corner to Sections 24 and 25, T.34N., R.14E.
Corner position restored by retracement of the surveys done in 1907 by N. Smith and J. J. Melendy.
Corner References:

Sugar	6"	N.64°E.	29.94 feet
Sugar	12"	South	51.21 feet
Sugar	10"	N.75°W.	54.93 feet
Steel Sign Post		South	0.65 feet

Stock No. 26273

Sheet 4 of 5

6. Quarter Corner to Sections 25 and 30, T.34N., R.14-15E.

Corner position restored by retracement of N. Smith's survey along east-west quarter line of Section 25 in 1930.

Corner References:

Sugar	15"	S.	
		N.58°E.	46.96 feet
Black Cherry	8"	S.46°E.	60.22 feet
Aspen	9"	S.41°W.	23.64 feet
Steel Sign Post		Northeast	1.00 feet

7. Quarter Corner to Sections 25 and 36, T.34N., R.14E.

Corner position recovered and monumented by M. Stefan, R.L.S. 1558. Certificate on file in Forest County.

8. Quarter Corner to Sections 25 and 26, T.34N., R.14E.

Corner position recovered by T. Arnott, R.L.S. and perpetuated by M. Stefan, R.L.S. Certificates on file in Forest County.

9. Center East Sixteenth Corner to Section 25.

Corner recovered at the intersection of fence lines from north, south, and west. Position fits within 6 feet of N. Smith's 1930 survey of east-west quarter line of Section 25.

Corner References:

Sugar	7"	N.20°E.	30.06 feet
Sugar	7"	S.17°E.	22.77 feet
Sugar	8"	West	45.26 feet
Steel Sign Post		North	0.95 feet

CORNERS ESTABLISHED1. West One-Sixteenth to Sections 24 and 25.

Corner established midpoint and on line between the northwest corner and the north quarter corner of Section 25.

Corner References:

White Birch .	9"	East	17.11 feet
Sugar	7"	S.33°E.	18.37 feet
Red Maple	5"	N.3°W.	28.41 feet
Steel Sign Post		Northeast	0.86 feet

2. South One-Sixteenth to Sections 25 and 26.

Corner established midpoint and on line between the southwest corner and the west quarter corner of Section 25.

Corner References:

Sugar	9"	S.68°E.	22.10 feet
Sugar	8"	S.2°E.	36.46 feet
Sugar	11"	S.88°W.	18.48 feet
Steel Sign Post		Southeast	1.03 feet

3. Center North One-Sixteenth to Section 25.

Corner established midpoint and on line between the center quarter corner and the north quarter corner of Section 25.

Corner References:

Aspen	9"	N.89°E.	44.74 feet
Aspen	9"	South	5.86 feet
Aspen	9"	S.46°W.	16.13 feet
Steel Sign Post		West	0.80 feet

Stock No. 26273

Sheet 5 of 5

4. Center South One-Sixteenth to Section 25.

Corner established midpoint and on line between the center quarter corner and the south quarter corner of Section 25.

Corner References:

Aspen	7"	S.82°E.	6.62	feet
Sugar	4"	S.89°W.	64.79	feet
Aspen	9"	N.41°W.	46.91	feet
Steel Sign Post		East	1.75	feet

5. Northwest One-Sixteenth to Section 25.

Corner established at the intersection of the north and west one-sixteenth lines of Section 25.

Corner References:

Sugar	6"	S.44°W.	49.37	feet
Sugar	8"	N.66°W.	12.31	feet
Sugar	8"	N.3°W.	45.17	feet
Steel Sign Post		Northeast	1.37	feet

6. Northeast One-Sixteenth to Section 25.

Corner established at the intersection of the north and east one-sixteenth lines of Section 25.

Corner References:

Sugar	6"	N.74°E.	21.78	feet
Sugar	4"	S.45°E.	38.84	feet
Sugar	8"	S.25°W.	37.35	feet
Steel Sign Post		Northeast	1.11	feet

7. Southeast One-Sixteenth to Section 25.

Corner established at the intersection of the south and east one-sixteenth lines of Section 25.

Corner References:

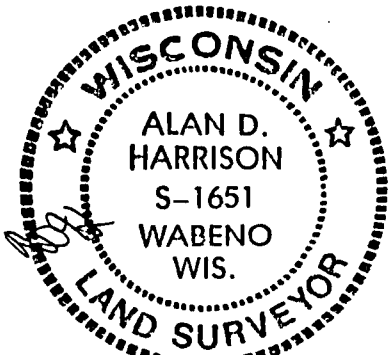
Sugar	7"	N.54°E.	41.05	feet
Sugar	10"	S.14°E.	23.83	feet
Sugar	6"	S.62°W.	25.79	feet
Steel Sign Post		Southeast	0.96	feet

SURVEYOR'S AFFIDAVIT

State of Wisconsin]
County of Forest] SS

I, Alan D. Harrison, Land Surveyor, USDA, Forest Service and a registered surveyor in the State of Wisconsin, hereby certify that I have surveyed and subdivided Section 25, Township 34 North, Range 14 East, Fourth Principal Meridian, State of Wisconsin.

The plat map and the notes herewith are a correct representation of the land surveyed and divided. I have surveyed and subdivided said section in accordance with the rules for survey of the public lands and with the statutes of the State of Wisconsin.



Alan D. Harrison
Land Surveyor, USDA, Forest Service
R.L.S., State of Wisconsin
Certificate S-1651

Plat ready for filing:

Charles Stagg
District Ranger

Date of Survey: 1987