

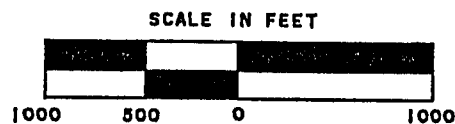
Stock No. 26273

Sheet 1 of 3

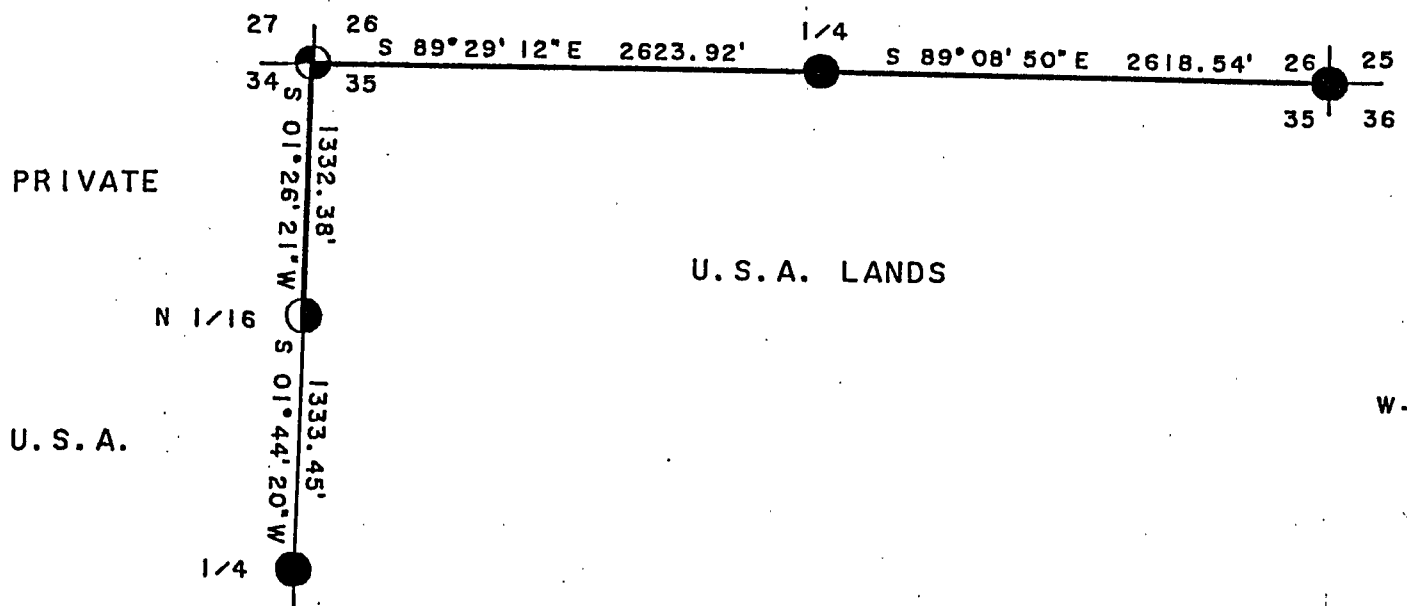
CERTIFIED LAND BOUNDARY ESTABLISHMENT

U.S. GOVERNMENT LANDS





BEING THE NORTH 1/4 OF THE WEST LINE AND THE NORTH LINE
OF SECTION 35, TOWNSHIP 34 NORTH, RANGE 14 EAST,
FOURTH PRINCIPAL MERIDIAN,
FOREST COUNTY, WISCONSIN.



PRIVATE LANDS



LEGEND

-  RAILROAD SPIKE SET IN CENTERLINE OF ROAD.
-  2 1/2" ALUMINUM MONUMENT, FOUND IN PLACE.
-  1" X 36" ALUMINUM MONUMENT, SET THIS SURVEY.
-  MARKED BOUNDARY OF U.S. GOVERNMENT LANDS.

FOREST CO SURVEYOR
FILE # 341435-19900329
DATE _____ BY _____



Stock No. 26273

Sheet 2 of 3

SURVEY NOTES

This survey was made by the U. S. Department of Agriculture, Forest Service, for the purpose of restoring and establishing corners on the perimeter of Section 35, and for locating and marking the boundaries of U. S. Government land on the perimeter of Section 35, Township 34 North, Range 14 East, Fourth Principal Meridian, Forest County, Wisconsin.

The U. S. Government lands in this section were acquired in 1942.

The original government subdivision survey of this township was made in 1859.

The corner positions recovered, restored and established by this survey are marked by the monument described in the map legend.

The corner positions established were located to an accuracy of one part in 3000.

The bearings between corner positions are true bearings as determined by solar observations.

The field notes of this survey and a copy of this plat are on file in the Forest Supervisor's Office at Rhinelander, Wisconsin.

CORNERS RECOVERED AND RESTORED1. Corner to Sections 26, 27, 34 and 35.

Corner position restored by using J. J. Melandy's 1907 survey information and existing evidence.

Corner References:

Witness Corner	2½"x36"	South	23.16	feet
Sugar	4"	S.06°E.	37.84	feet
Sugar	14"	N.66°W.	94.75	feet
Sugar	4"	N.13°W.	86.89	feet
Steel Sign Post		South	23.86	feet

2. Corner to Sections 25, 26, 35 and 36.

Corner position recovered, marked by a 2½" x 36" aluminum monument as set in 1985 by Milo Stefan (RLS).. Certificate on file.

3. Quarter Corner to Sections 26 and 35.

Corner position recovered, marked by a 2½" x 36" aluminum monument as set in 1985 by Alan Harrison (RLS). Certificate on file.

4. North One-Sixteenth Corner to Sections 34 and 35.

Corner position recovered, marked by a 1½" iron pipe.

Corner References:

Sugar	16"	S.34°E.	7.56	feet
Sugar	20"	S.74°W.	52.19	feet
Steel Sign Post		Southeast	0.49	feet

Stock No. 26273

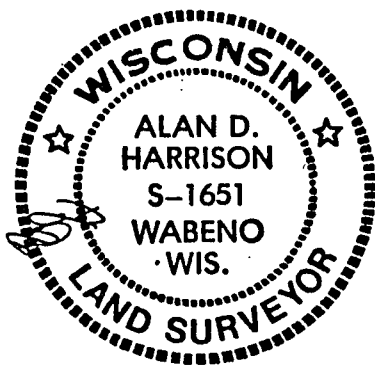
Sheet 3 of 3

SURVEYOR'S AFFIDAVIT

State of Wisconsin] SS
 County of Forest]

I, Alan D. Harrison, Land Surveyor, U.S.D.A. Forest Service and a Registered Land Surveyor in the State of Wisconsin, do hereby certify that I have surveyed the perimeter of Section 35, Township 34 North, Range 14 East, Fourth Principal Meridian, State of Wisconsin.

The plat map and the notes herewith are a correct representation of the land surveyed. I have surveyed the perimeter of said section in accordance with the rules for survey of the public lands and with the statutes of the State of Wisconsin.



Alan D. Harrison
 LAND SURVEYOR, U.S.D.A. Forest Service
 R.L.S. Number S-1651
 State of Wisconsin

Plat ready for filing:

Dale S. Sturge
 District Manager

Date of Survey: 1988

