

Stock No. 26273

FOREST CO SURVEYOR

FILE # 34505-19881017

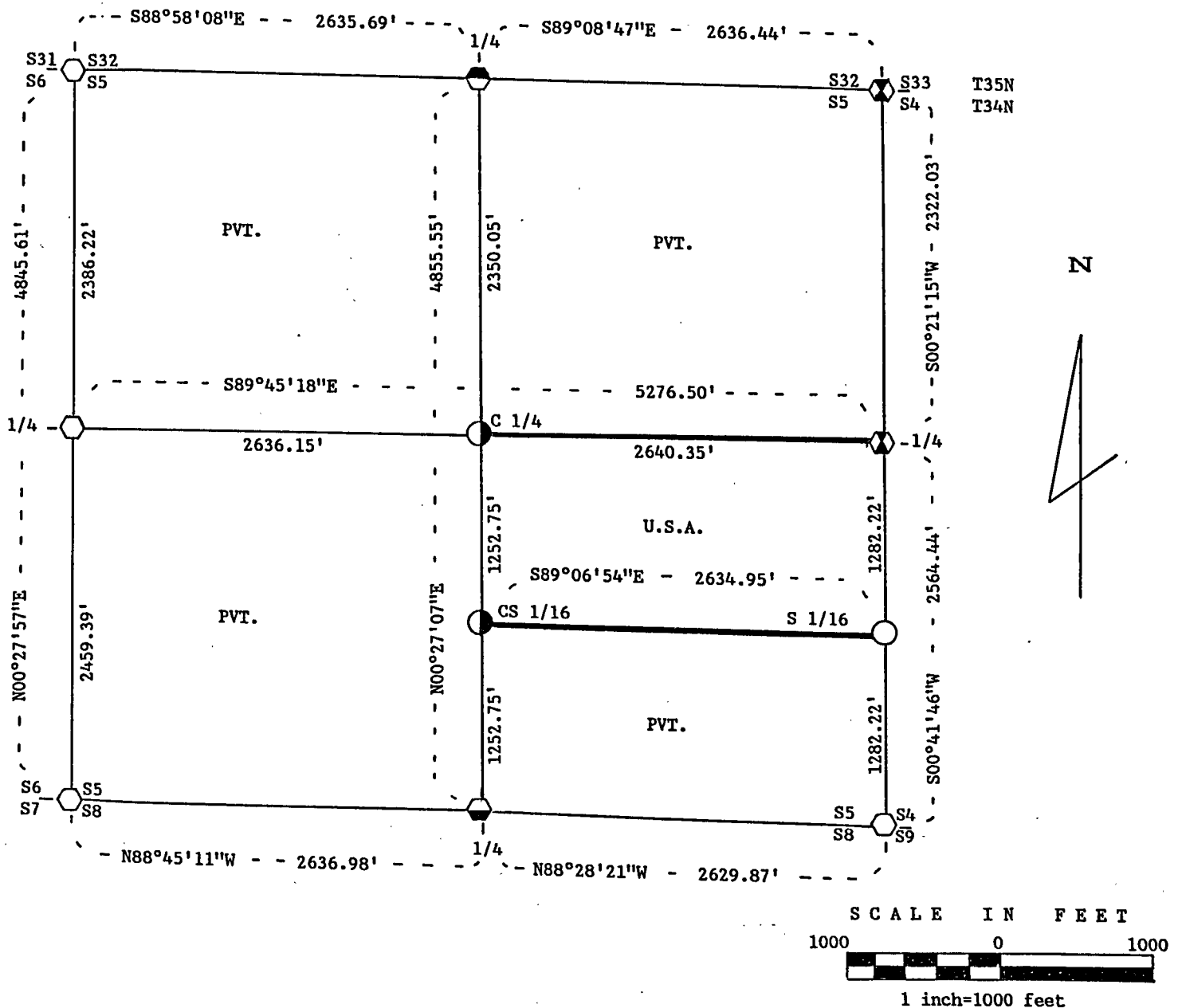
DATE _____ BY _____

1989

Sheet 1 of 4

PLAT OF SURVEY FOR CERTIFIED LAND CORNER RESTORATION AND ESTABLISHMENT OF U.S. GOVERNMENT LAND

BEING THE CORNERS FOR THE NORTH HALF OF THE SOUTHEAST QUARTER.
SECTION 5, T34N, R15E, FOURTH PRINCIPAL MERIDIAN
FOREST COUNTY, STATE OF WISCONSIN



LEGEND

- Boundary line marked to standard.
- 1 1/4" diameter X 24" iron pipe, buried in the road, set a Witness Corner 1" diameter aluminum pipe monument, 36" long with an aluminum cap stamped to identify the location of the corner.
- Railroad spike in the road, set a Witness Corner 1" diameter aluminum pipe monument, 36" long with an aluminum cap stamped to identify the location of the corner.
- ⬡ 2 1/2" diameter aluminum pipe monument, 36" long with an aluminum cap stamped to identify the corner.
- ⬢ 2 1/2" diameter aluminum Forest County pipe monument, 36" long with an aluminum cap stamped to identify the corner.
- ⬤ 1 1/2" diameter X 30" iron pipe, buried in the road, set a Witness Corner 2 1/2" diameter aluminum pipe monument, 36" long with an aluminum cap stamped to identify the location of the corner.
- ⬥ 1 1/4" diameter X 2 ft. iron pipe, buried in the road, set a Witness Corner 2 1/2" diameter aluminum pipe monument, 36" long with an aluminum cap stamped to identify the location of the corner.

Note: Bearings are referenced to polaris observations.

SURVEY NOTES

This survey was made by John C. Schulke, a Registered Land Surveyor in the State of Wisconsin, for the U.S. Department of Agriculture, Forest Service. The purpose of the survey was for recovery, establishing, marking and perpetuating the corners and boundary lines of the U.S. Government Land on the perimeter and within Section 5, Township 34 North, Range 15 East, Fourth Principal Meridian, Forest County, Wisconsin.

The Original Government Survey of the township boundary was done by Artemas Curtis in 1857. The Original Government Subdivision survey of this township was done by James McBride in 1859.

The bearings between corner positions are true bearings as determined by reference to polaris observations. The accuracy of this survey exceeds the State requirement for closure of 1 in 3,000. Corners recovered or established by this survey are marked as described in the map legend. Each monumented corner is referenced to blazed, scribed, painted and tagged bearing trees. Tie bearings are magnetic, and not corrected for declination.

CORNERS RECOVERED AND RESTORED

1. Section Corner Common to Sections 5, 6, 31 and 32.
Corner monument recovered in place and as described on a U.S. Public Land Survey Monument Record form filed in the Forest County Register of Deed's Office, Document #127190, in Dec. 1984 by Milo Stefan (RLS-1558).
2. Quarter Corner Between Sections 5 and 32.
Recovered iron pipe set by N. H. Smith. Found chiseled "X" on boulder done by Melondy in 1908. Established corner by recovered boulder.

Recovered corner references:

Boulder		N61°W	40.6 feet
---------	--	-------	-----------

 Corner references:

Sugar Maple	7"	S37°W	78.20 feet
Sugar Maple	5"	N39°E	48.66 feet
Witness Cor. monument	2 1/2"	North	32.90 feet
Steel sign post	North along side of monument		2.6 feet
3. Section Corner Common to Sections 4, 5, 32 and 33.
Corner monument recovered in place and as described on the U.S. Public Land Survey Monument Record form filed in the Forest County Register of Deed's Office, Document #135393, in April 1988 by Alan Harrison (RLS-1651).
4. Quarter Corner Between Sections 4 and 5.
Corner monument recovered in place and as described on a U.S. Public Land Survey Monument Record form filed in the Forest County Register of Deed's Office, Document #135394, in 1988 by Alan Harrison (RLS-1651).
5. Section Corner common to Sections 4, 5, 8 and 9.
Corner monument recovered in place and as described on a U.S. Public Land Survey Monument Record form filed in the Forest County Register of Deed's Office, Document #135395, in April 1988 by Alan Harrison (RLS-1651).
6. Quarter Corner Between Sections 5 and 8.
Corner monuments recovered in place and as described on a Certified Land Corner Restoration form filed in the Forest County Register of Deed's Office, Document #112923, in Dec. 1977 by Paul N. Smith (RLS-1125).

7. Section Corner Common to Sections 5, 6, 7 and 8.
Corner monument recovered in place and as described on a U.S. Public Land Survey Monument Record form filed in the Forest County Register of Deed's Office, Document #127193, in 1984 by Milo Stefan (RLS-1558).
8. Quarter Corner Between Sections 5 and 6
Corner restored by proportional methods. Relocated exiting monument with written approval of the surveyor (RLS-1558).

Corner references:

White Pine	5"	S56°W	107.00 feet
Basswood	17"	N59°W	29.91 feet
Basswood	11"	N08°W	39.03 feet
Sugar Maple	13"	N89°W	50.60 feet
Sugar Maple	10"	S73°E	65.93 feet
Steel sign post		North	1.4 feet

CORNERS ESTABLISHED

1. Center Quarter Corner of Section 5.
Corner position is established at the intersection of a straight lines between opposing Quarter corners of the perimeter of Section 5.

Corner references:

Sugar Maple	10"	S54°E	51.25 feet
Witness Corner			
Monument	2 1/2"	S89°45'E	22.08 feet
Steel sign post South of the monument			1.1 feet

2. Center South Sixteenth Corner of Section 5.
Corner position is established at the midpoint and on line between the South Quarter corner and the Center Quarter corner of Section 5.

Corner references:

Sugar Maple	12"	N30°E	72.55 feet
Witness Corner			
Monument	2 1/2"	S89°07'E	31.00 feet
Steel sign post East of the monument			0.5 feet

3. South Sixteenth Corner Between Sections 4 and 5.
Corner position is established at the midpoint and on line between the East Quarter corner and the Southeast Section corner of Section 5.

Corner references:

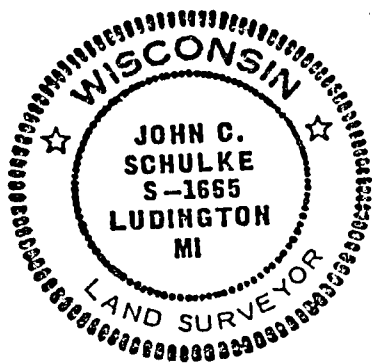
chiseled "X"			
on boulder	2'X2 1/2'	S73°W	28.85 feet
Witness Corner			
Monument	2 1/2"	N89°07'W	33.00 feet
Steel sign post West of the monument			1.0 feet

SURVEYOR'S AFFIDAVIT

State of Wisconsin)
County of Forest)^{ss}

I, John C. Schulke, a Cadastral Surveyor, and a Registered Land Surveyor in the State of Wisconsin, hereby certify that I have surveyed and subdivided Section 5, Township 34 North, Range 15 East, Fourth Principal Meridian, State of Wisconsin.

The plat map and survey notes herewith are a correct representation of the land surveyed and subdivided. I have surveyed and subdivided said section in accordance with the rules for the survey of the public lands and with the statutes of the State of Wisconsin.



John C. Schulke
4604 So. Pere Marquette Rd.
Ludington, MI 49431
R.L.S. State of Wisconsin
Date of Survey 1988
Certificate S-1665

John C. Schulke

Oct. 17, 1988

Plat ready for filing

Dale B. Staege
District Ranger

