

Stock No. 26273

FOREST CO SURVEYOR

FILE # 34518-1985

DATE \_\_\_\_\_ BY \_\_\_\_\_

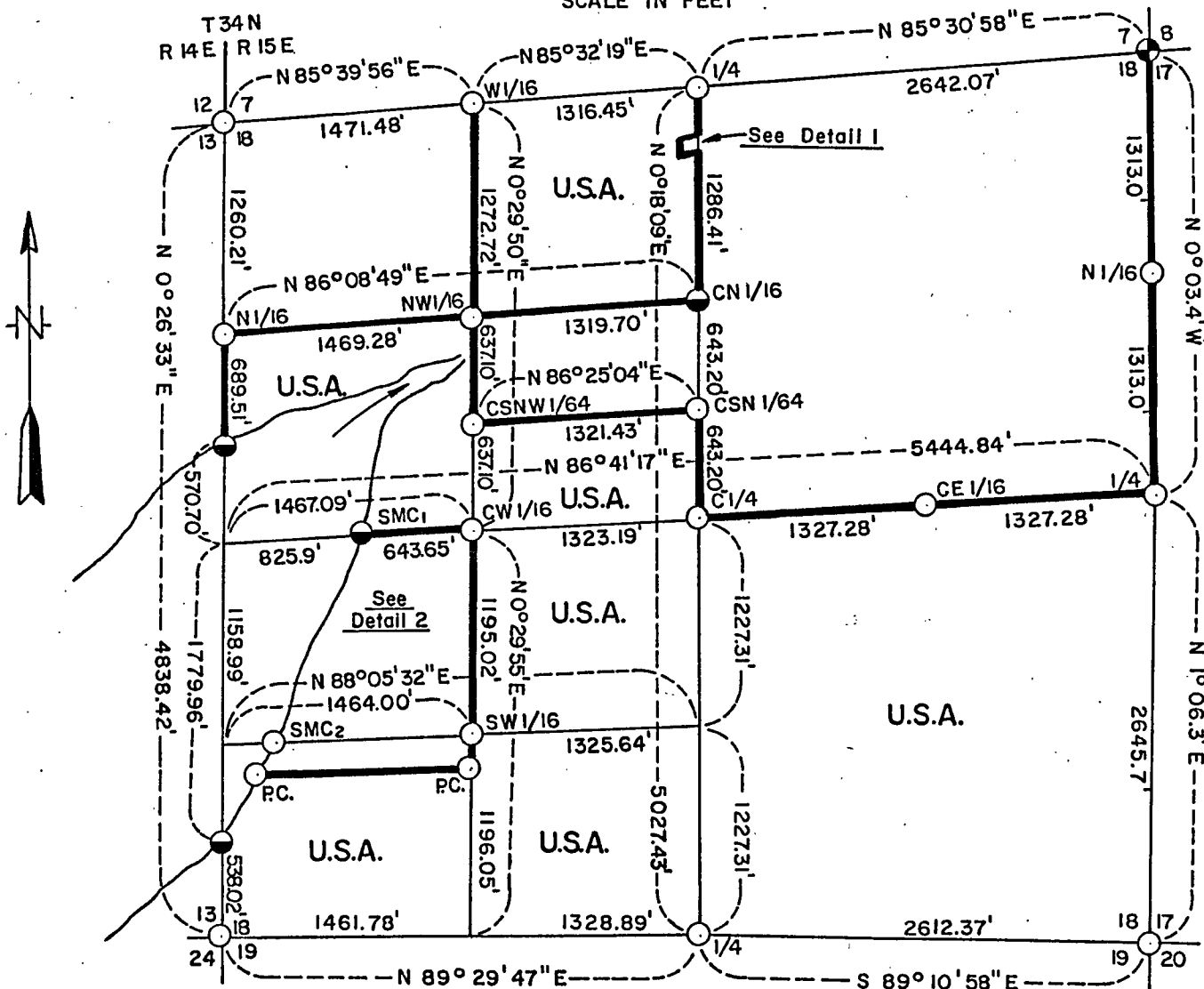
SHEET 1 OF 9

# PLAT OF SURVEY U.S. GOVERNMENT LAND

Being SE1/4, S1/2 SW1/4, NE1/4 SW1/4, NE1/4 NW1/4,  
SW1/4 NW1/4 and S1/2 E1/4 NW1/4 Section 18

Township 34 North, Range 15 East, Fourth Principal Meridian  
FOREST COUNTY, WISCONSIN

1000 0 1000  
SCALE IN FEET



## LEGEND

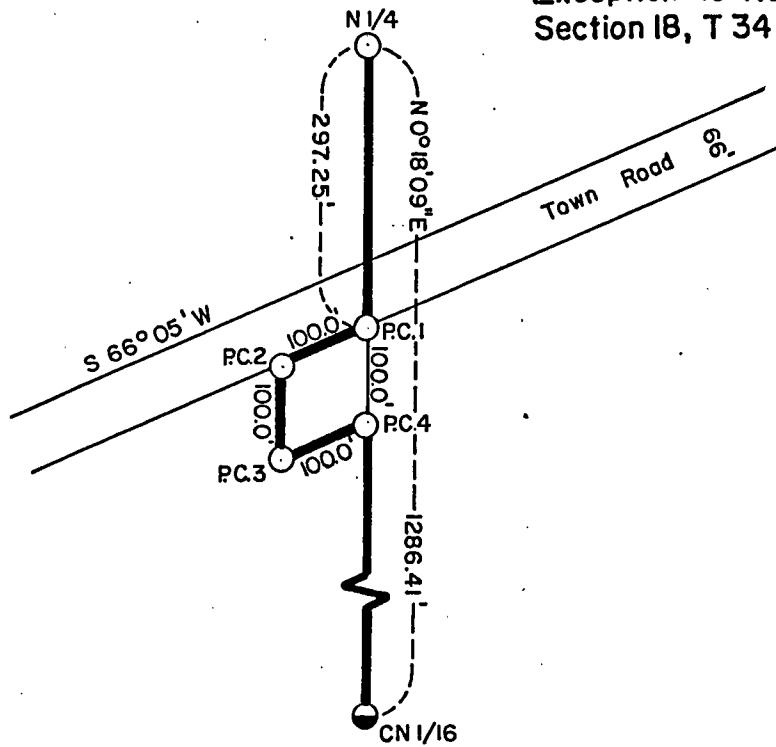
- ⊕ Corner Marked by a Forest County Aluminum Monument
- Corner Marked by a 2"x30" Aluminum Pipe with Aluminum Cap
- Corner Marked by a 2"x60" Aluminum Pipe with Aluminum Cap
- Boundary Lines Marked and Posted

U.S.A. U.S. Government Lands

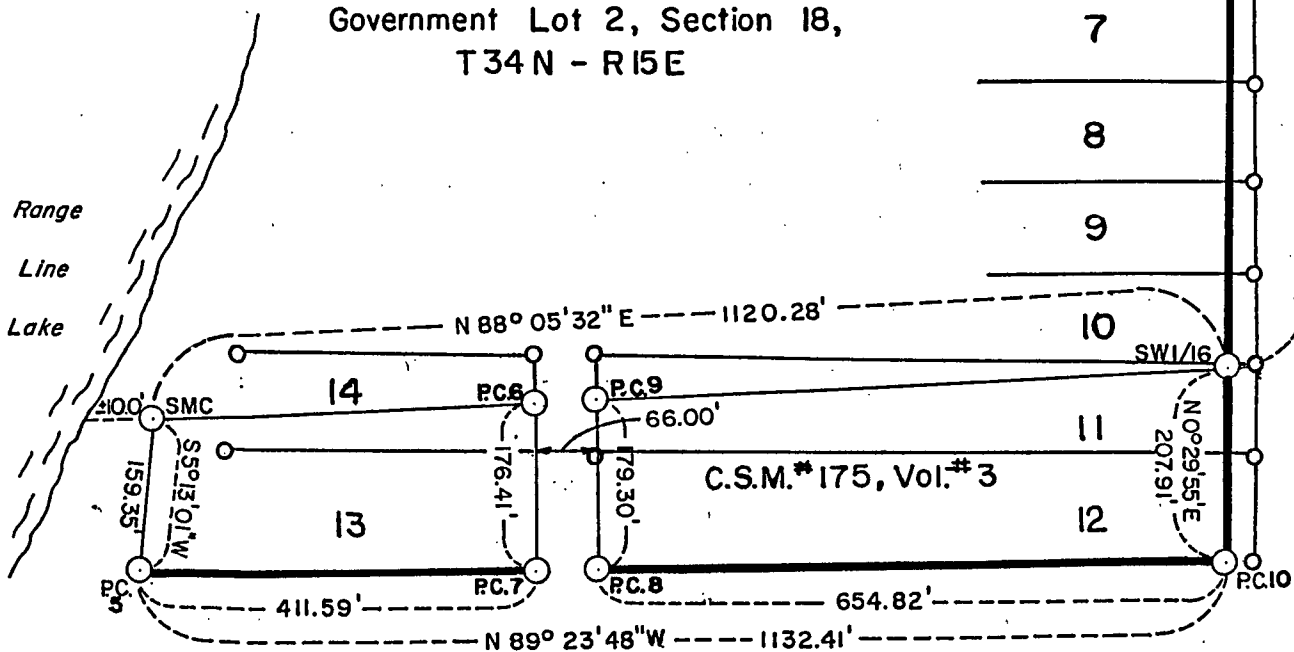
Conversion Factor:  
Feet to Meters -0.304801  
Meters to Feet -3.28033

Stock No. 26273

SHEET 2 OF 9

**DETAIL 1**Exception to NE1/4 NW1/4  
Section 18, T 34 N-R15 E**DETAIL 2**

Certified Surveys of Record By  
Michael Snyder Hess, 1972 U.S.  
Government Lot 2, Section 18,  
T 34 N - R 15 E



U.S.A.

Stock No. 26273

Sheet 3 of 9

SURVEY NOTES

This survey was made by the U. S. Department of Agriculture, Forest Service, for the purpose of restoring and establishing corners on the perimeter of Section 18, for establishing subdivisional corners within Section 18, and for locating and marking the boundaries of U. S. Government land on the perimeter and within Section 18, Township 34 North, Range 15 East, Fourth Principal Meridian, Forest County, Wisconsin.

The U. S. Government lands in this section were acquired in 1935.

The original Government subdivision survey of this township was made in 1859. Subsequent surveys by Nathan Smith in 1907, 1908, and 1909 were used to support this survey. In 1984, additional surveys by J. A. Melendy in 1909 along the south side of section were located. The south quarter and southwest section corners have been moved from Stefan's 1981 survey.

The corner positions recovered, restored, and established by this survey are marked by the monument described in the map legend.

The corner positions established were located to an accuracy of one part in 3000.

The bearings between corner positions are true bearings as determined by solar observations.

The field notes of this survey and a copy of this plat are on file in the Forest Supervisor's Office at Rhinelander, Wisconsin.

CORNERS RECOVERED AND RESTORED1. Section Corner to Sections 7-8-17-18, T.34N., R.15E.

Corner position found marked by a Forest County aluminum monument.  
Certificate filed, Document Number 112924.

Corner References:

Iron Pipe	1"	N.18°50'W.	15.93	feet
Iron Pipe	1"	S14°36'20"W.	25.72	feet
Iron Pipe	1"	S89°51'20"E.	10.30	feet
Basswood	10"	N.56°E.	32.85	feet
Sugar Maple	8"	S.68°E.	38.73	feet
Yellow Birch	10"	S.14°W.	26.11	feet
Yellow Birch	8"	N.18°W.	16.78	feet
Steel Sign Post		East	1.60	feet

2. Section Corner to Sections 7-18-12-13, T.34N., R.14-15E.

Corner position found marked by an iron pipe below road surface, at road intersection.

Corner References:

Basswood	10"	N.71°E.	86.73	feet
Butternut	12"	S.15°E.	140.74	feet
Sugar Maple	8"	S.57°W.	113.00	feet
Sugar Maple	4"	N.13°W.	159.25	feet
Steel Sign Post		N.12°E.	17.30	feet

Stock No. 26273

Sheet 4 of 9

3. Section Corner to Sections 13-18-19-24, T.34N., R.14-15E.

Corner position restored from a living Yellow Birch bearing tree placed in 1909 by J. A. Melendy. Melendy's notes state that this position was restored by W. L. Harris.

Corner References:

Sugar Maple	12"	N.27°E.	34.36 feet
Sugar Maple	6"	N.84°E.	65.20 feet
Sugar Maple	12"	S.61°W.	23.13 feet
Sugar Maple	4"	N.30°W.	55.25 feet
Steel Sign Post		South	7.80 feet

4. Section Corner to Sections 17-18-19-20, T.34N., R.15E.

Corner position restored by double proportionate measurement from quarter corners one-half mile north, west and east and one mile south.

Corner References:

Sugar Maple	5"	N.89°E.	47.07 feet
Yellow Birch	5"	S.40°E.	31.38 feet
Hickory	8"	West	95.90 feet
Sugar Maple	5"	N.28°W.	50.90 feet
Steel Sign Post		West	16.60 feet

5. Quarter Corner to Sections 17 and 18, T.34N., R.15E.

Corner position restored from subsequent survey remains by Nathan Smith in 1917--mound of stone and remains of a new bearing tree.

Fences north, south, east, and west.

Corner References:

Black Ash	12"	S.12°E.	25.28 feet
Black Ash	13"	S.40°W.	46.70 feet
Yellow Birch	9"	N.10°W.	27.11 feet
Steel Sign Post		Southeast	1.20 feet

6. Quarter Corner to Sections 7 and 18, T.34N., R.15E.

Corner position found marked by a fence corner. Position is supported by bearing and distances to section corner as recorded in the Town of wabeno plat dating back to the 1890s.

Corner References:

Sugar Maple	6"	N.18°E.	21.62 feet
Sugar Maple	8"	S.34°W.	21.15 feet
Steel Sign Post		Southwest	1.00 feet

7. Quarter Corner to Sections 18 and 19, T.34N., R.15E.

Corner position restored from remains of original bearing tree and post hole. Melendy's survey of the north-south quarter line supports this position.

Corner References:

White Oak	8"	N.13°E.	29.25 feet
White Oak (Twin)	6"	S.45°E.	18.89 feet
White Oak	8"	S.58°W.	50.96 feet
Steel Sign Post		Northwest	.80 feet

Stock No. 26273

Sheet 5 of 9

8. Quarter Corner to Sections 13 and 18, T.34N., R.14-15E.

Corner position falls in Range Line Lake. Subsequent surveys by Nathan Smith established this corner on the ice in 1907 and 1908. At that time, evidence of both meander corners was present. He recognized the called distance between the MCs as short by 6.27 chains. By proportionate distance, he positioned this corner on the ice. I, therefore, accept Smith's surveys and proportioned out his errors and positioned the corner on line and 2317.98 feet north of the southwest section corner to Section 18.

## 8a. We placed a witness corner on the north shore of Range Line Lake, 570.70 feet north of quarter corner.

Corner References:

Cedar	9"	N.10°E.	18.06 feet
Cedar	8"	S.87°W.	36.31 feet
Black Ash	3"	N.13°W.	48.02 feet
Steel Sign Post		North	1.00 feet

## 8b. We placed a witness corner on the south shore of Range Line Lake, 1779.96 feet south of quarter corner.

Corner References:

Black Ash	5"	N.54°E.	19.71 feet
Black Ash	7"	S.19°E.	12.91 feet
Black Ash	8"	S.49°W.	29.76 feet
Steel Sign Post		South	1.00 feet

9. West Sixteenth Corner to Sections 7 and 18.

Corner position found-located by a fence corner---fence east, west, and north. Position is in accordance with bearings and distances to section corner westerly and quarter corner easterly.

Corner References:

Red Pine	5"	N.43°E.	58.95 feet
Sugar Maple	8"	S.36°E.	53.99 feet
Steel Sign Post		South	1.00 feet

CORNERS ESTABLISHED1. Center Quarter Corner.

Corner position established at the intersection of straight lines between opposing quarter corners on the perimeter of Section 18.

Corner References:

Sugar Maple	9"	N.49°E.	10.64 feet
Basswood	10"	S.66°W.	41.09 feet
Sugar Maple	12"	N.61°W.	61.78 feet
Steel Sign Post		East	1.30 feet

2. North Sixteenth Corner to Sections 13 and 18.

Corner position established on line and midpoint between the west quarter corner and northwest section corner to Section 18.

Corner References:

Sugar Maple	15"	N.35°E.	51.07 feet
White Ash	10"	S.38°E.	22.79 feet
Sugar Maple	24"	S.85°W.	17.84 feet
Steel Sign Post		South	.90 feet
Iron Pipe	1"	N.26°E.	52.96 feet

Stock No. 26273

Sheet 6 of 9

3. North Sixteenth Corner to Sections 17 and 18.

Corner position established on line and midpoint between the east quarter corner and northeast section corner to Section 18.

Corner References:

White Ash	6"	N.78°E.	19.63 feet
White Ash	5"	S.41°E.	48.36 feet
Basswood	9"	S.86°W.	7.39 feet
Steel Sign Post		South	2.10 feet

4. Center North Sixteenth Corner.

Corner position established on line and midpoint between the center quarter and north quarter corners.

Corner References:

Black Ash	4"	N.66°E.	14.68 feet
Black Ash	6"	S.42°E.	37.44 feet
Black Ash-Dead in 1985	12"	S.42°W	18.81 feet
Steel Sign Post		Southwest	1.30 feet

5. Center West Sixteenth Corner.

Corner position established on line and midpoint between the center quarter and west quarter corners.

Corner References:

Sugar Maple	5"	N.65°E.	34.27 feet
Sugar Maple	8"	S.32°E.	41.87 feet
Sugar Maple	14"	N.61°W.	64.13 feet
Steel Sign Post		South	41.20 feet
Steel Sign Post		West	53.10 feet

6. Center East Sixteenth Corner.

Corner position established on line and midpoint between the center quarter and east quarter corner.

Corner References:

Red Oak	10"	N.46°E.	41.20 feet
Red Oak	5"	S.37°W.	72.78 feet
Hemlock	12"	N.45°W.	85.63 feet
Steel Sign Post		West	2.70 feet
1½" Iron Pipe		N.23°W.	71.20 feet

7. Northwest Sixteenth Corner.

Corner position established at the intersection of the north and west sixteenth lines.

Corner References:

Cedar	10"	N.75°E.	76.52 feet
Aspen	12"	S.35°E.	60.51 feet
Aspen	9"	N.89°W.	90.29 feet
Steel Sign Post		West	9.00 feet

8. Southwest Sixteenth Corner.

Corner position established at the intersection of the west and south sixteenth lines.

Corner References:

Sugar Maple	7"	N.19°E.	33.02 feet
Sugar Maple	7"	S.43°E.	22.65 feet
Sugar Maple	7"	S.68°W.	30.59 feet
Steel Sign Post		North	1.00 feet

Stock No. 26273

Sheet 7 of 9

9. Center South North Sixty-Fourth Corner.

Corner position established on line and midpoint between the center quarter and center north sixteenth corners.

Corner References:

Sugar Maple	5"	N.39°E.	20.45 feet
Sugar Maple	8"	S.38°E.	22.86 feet
Basswood	8"	S.81°W.	55.42 feet
Steel Sign Post		West	1.60 feet

10. Center South Northwest Sixty-Fourth Corner.

Corner position established on line and midpoint between the center west sixteenth and northwest sixteenth corners. Corner is a 16" x 16" x 12" boulder with an "X" on it, below road surface.

Corner References:

Cedar	9"	S.83°W.	33.35 feet
Cedar	6"	N.45°W.	83.30 feet
Steel Sign Post		West	14.00 feet

11. Special Meander Corner No. 1.

Corner position established on the east-west quarter line 636.4 feet west of the center west sixteenth corner on the east shore of Range Line Lake.

Corner References:

Black Ash	4"	N.86°E.	94.19 feet
Red Maple	5"	S.65°E.	42.92 feet
Steel Sign Post		East	1.40 feet

12. Special Meander Corner No. 2.

Corner position established on the south sixteenth line 1120.28 feet west of the southwest sixteenth corner on the east shore of Range Line Lake.

Corner References:

Double Elm	5"	N.16°E.	23.50 feet
White Oak	9"	N.72°E.	37.04 feet
Black Ash	3"	S.59°W.	21.89 feet
Steel Sign Post		Northwest	1.20 feet

13. Property Corner No. 1.

Corner position established 297.25 feet southerly along the north-south quarter line from the north quarter corner to Section 18, as called for in the deed exception to the northeast quarter to the northwest quarter to Section 18.

Corner References:

Red Pine	4"	N.8°E.	69.50 feet
Red Oak	7"	N.45°W.	73.34 feet
Steel Sign Post		North	1.20 feet

14. Property Corner No. 2.

Corner position established S.66°05'W., a distance of 100.00 feet from Property Corner No. 1.

Corner References:

Sugar Maple	10"	N.16°W.	71.77 feet
Basswood	6"	S.39°W.	33.51 feet
Steel Sign Post		South	1.30 feet

Stock No. 26273

Sheet 8 of 9

15. Property Corner No. 3.

Corner position established southerly 100.00 feet, parallel to the north-south quarter line from Property Corner No. 2.

Corner References:

Black Ash	9"	S.7°W.	35.29 feet
Cedar	4"	N.84°W.	18.81 feet
Steel Sign Post		East	1.80 feet

16. Property Corner No. 4.

Corner position established 397.25 feet southerly along the north-south quarter line from the north quarter corner to Section 18.

Corner References:

Black Ash	6"	S.39°W.	85.59 feet
Black Ash	3"	S.59°W.	76.52 feet

17. Property Corner No. 5.

Corner position established on the south boundary with east shore of Range Line Lake as called for in the Certified Survey Map #175--filed in Forest County Volume 3.

Corner References:

Black Ash	4"	S.13°E.	24.17 feet
Black Ash	4"	S.41°W.	9.67 feet
"X" on Rock	3'x5'x2.5'	S.81°E.	47.77 feet
Steel Sign Post		East	1.80 feet

18. Property Corner No. 6.

Corner position established at the intersection of the south sixteenth line and the west boundary of a 66 foot right-of-way known as the Range Line Lake Road.

Corner References:

Sugar	6"	N.15°E.	16.46 feet
"X" on Rock	4'x5'x3'	N.65°E.	12.49 feet
Sugar	8"	S.59°E.	7.99 feet
Steel Sign Post		Southwest	1.25 feet

19. Property Corner No. 7.

Corner position established on the west boundary of the 66 foot Range Line Lake Road right-of-way 176.41 feet southerly of Property Corner No. 6, the south boundary of tract filed in Certified Survey Map #175, Volume 3, Forest County.

Corner References:

Sugar	6"	S.85°E.	81.53 feet
Sugar	7"	S.48°W.	58.96 feet
"X" on Rock	4'x4'x5'	N.20°E.	36.56 feet
Steel Sign Post		West	1.50 feet

20. Property Corner No. 8.

Corner position established on the east boundary of the 66 foot Range Line Lake Road right-of-way 179.30 feet south of Property Corner No. 9, the south boundary of tract filed as Certified Survey Map #175, Volume #3, Forest County.

Corner References:

Sugar	6"	S.76°E.	15.69 feet
Sugar	9"	S.30°E.	50.09 feet
Sugar	7"	S.05°W.	13.65 feet
Steel Sign Post		East	1.20 feet



Stock No. 26273

Sheet 9 of 9

21. Property Corner No. 9.

Corner position established at the intersection of the south sixteenth line and the east boundary of a 66 foot right-of-way known as the Range Line Lake Road.

Corner References:

"X" on Rock	3'x5'x2'	N.61°E.	3.48 feet
Basswood	5"	S.69°E.	38.49 feet
"X" on Rock	4'x5'x3'	N.87°W.	54.97 feet
Steel Sign Post			

22. Property Corner No. 10.

Corner position established on the west sixteenth line, 207.91 feet southerly of the southwest one-sixteenth corner--the southeast corner of Tract #175, Volume 3, Forest County, Wisconsin.

Corner References:

Sugar	6"	N.52°E.	21.88 feet
Sugar	9"	S.02°W.	19.48 feet
Sugar	6"	N.50°W.	27.43 feet
Steel Sign Post		West	2.50 feet

SURVEYOR'S AFFIDAVIT

State of Wisconsin SS  
County of Forest

I, Milo E. Stefan, Cadastral Surveyor, USDA, Forest Service, and a registered surveyor in the State of Wisconsin, hereby certify that I have surveyed and subdivided Section 18, Township 34 North, Range 15 East, Fourth Principal Meridian, State of Wisconsin.

The plat map and the notes herewith are a correct representation of the land surveyed and divided. I have surveyed and subdivided said section in accordance with the rules for survey of the public lands and with the statutes of the State of Wisconsin.



*Milo E. Stefan*

Cadastral Surveyor, USDA, Forest Service  
R.L.S., State of Wisconsin  
Certificate S-1558

Plat Ready For Filing:

*David B. Stagg*  
District Ranger

Date of Survey: 1985

