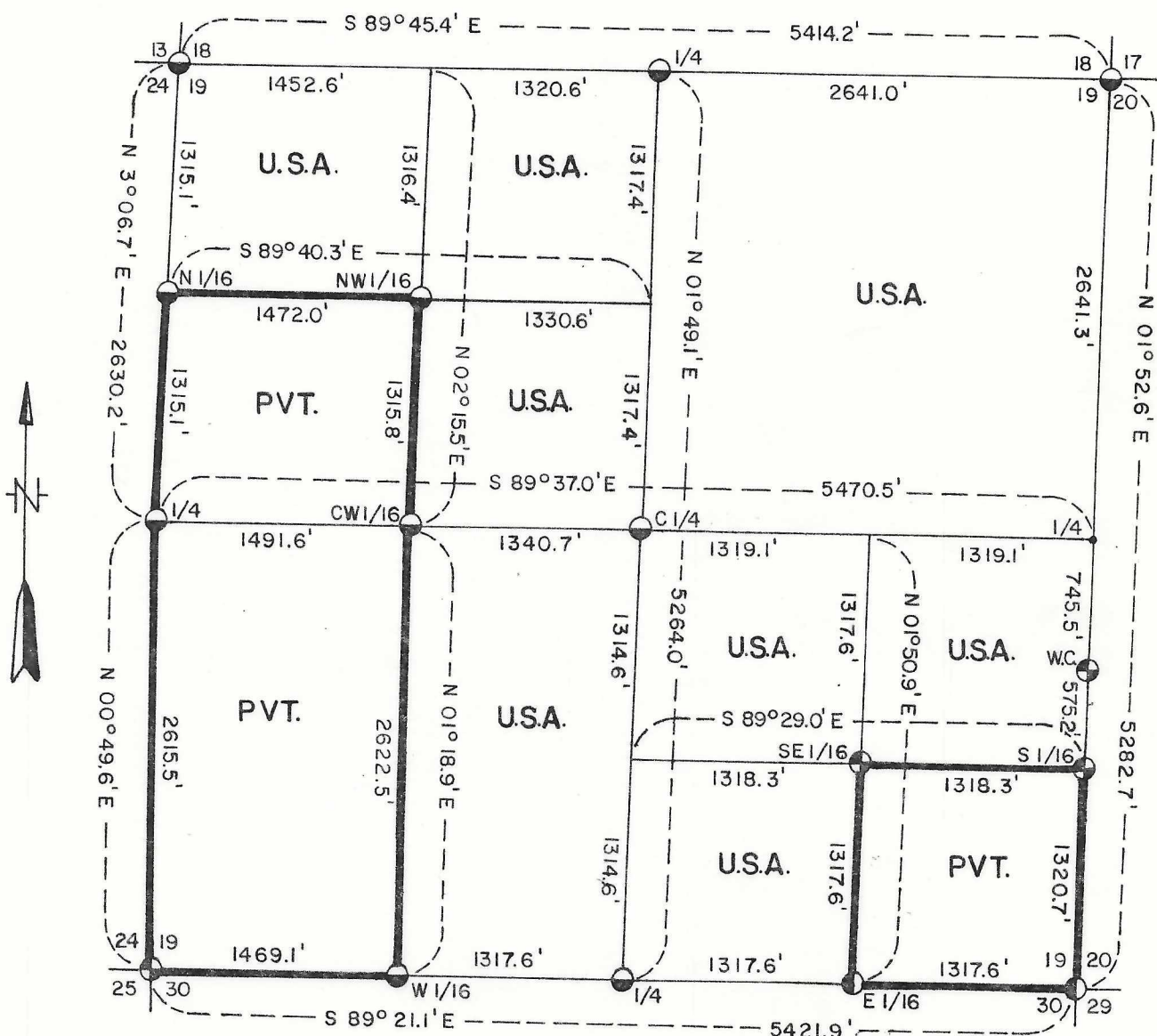


Stock No. 26273

SHEET 1 OF 5

PLAT OF SURVEY U.S. GOVERNMENT LAND

Being the NW1/4-NW1/4, E1/2-NW1/4; NE1/4; NE1/4-SE1/4,
W1/2-SE1/4, and the E1/2-SW1/4, Section 19
Township 34 North, Range 14-15 East, Fourth Principal Meridian
FOREST COUNTY, WISCONSIN



LEGEND

- 2" Aluminum Monument, 30" Long.
- ⊙ 2" Aluminum Monument, 36" Long.
- ⦿ 2" Aluminum Monument, 60" Long.
- U.S. Government Boundary.

FOREST CO SURVEYOR

FILE # 341519-19830907

DATE _____ BY _____

Conversion Factors:

Feet to Meters -0.304801

Meters to Feet -3.280833

Stock No. 26273

Sheet 2 of 5

SURVEY NOTES

This survey was made by the U. S. Department of Agriculture, Forest Service, for the purpose of restoring and establishing corners on the perimeter of Section 19, for establishing subdivisional corners within Section 19, and for locating and marking the boundaries of U. S. Government lands on their perimeter and within Section 19, Township 34 North, Range 15 East, Fourth Principal Meridian, Forest County, Wisconsin.

The U. S. Government lands in this section were acquired between 1934 and 1945.

The original Government subdivision survey of this township was made in 1857 and 1859.

The corner positions recovered, restored, and established by this survey are marked by the monument described in the map legend.

The corner positions established were located to an accuracy of one part in 3000.

The bearings between corner positions are true bearings as determined by solar observations.

The field notes of this survey and a copy of this plat are on file in the Forest Supervisor's Office at Rhinelander, Wisconsin.

CORNERS RECOVERED AND RESTORED

1. Section Corner to Sections 13-18-19-24, T.34N., R.14-15E.
Corner position marked by a 2" x 30" aluminum monument set by Milo Stefan, Plat of Survey filed with the County Clerk 6-21-81.
2. Section Corner to Sections 17-18-19-20, T.36N., R.15E.
Corner position marked by a 2" x 30" aluminum monument set by Milo Stefan, Plat of Survey filed with the County Clerk 6-21-81.
3. Section Corner to Sections 19-20-29-30, T.34N., R.14-15E.
Corner position found marked by a rotted wood post with evidence of original bearing tree remains.
Corner References:

Black Spruce	6"	N.19°E.	20.30 feet
Cedar	6"	S.48°E.	21.51 feet
Black Spruce	6"	S.6°E.	9.89 feet
Black Spruce	6"	N.67°W.	17.55 feet
Steel Sign Post		North	4.40 feet

4. Section Corner to Sections 19-24-25-30, T.34N., R.14-15E.
Corner position restored from original bearing tree remains.
Corner References:

Boulder with "X" on east side and iron pipe -		S.89°57'W.,	66.90 feet
Sugar Maple	8"	N.37°E.	33.68 feet
Sugar Maple	5"	S.23°E.	40.26 feet
Red Maple	6"	S.65°W.	37.68 feet
Sugar Maple	4"	N.2°W.	19.78 feet
Steel Sign Post		East	.70 feet



Stock No. 26273

Sheet 3 of 5

5. Quarter Corner to Sections 19 and 30, T.34N., R.15E.

Corner position was restored by single proportionate methods between section corner east and west.

Corner References:

Sugar Maple	5"	N.41°E.	26.67	feet
Red Maple	6"	S.23°E.	28.08	feet
Sugar Maple	5"	N.48°W.	37.06	feet
Steel Sign Post		East	1.20	feet

6. Quarter Corner to Sections 19 and 20, T.34N., R.15E.

Corner position restored by single proportion between the section corners north and south and witnessed south on section line 745.50 feet.

Witness Corner References:

Sugar Maple	4"	S.33°E.	46.75	feet
Sugar Maple	7"	S.7°W.	60.76	feet
Basswood	14"	N.75°W.	49.27	feet
Steel Sign Post		East	1.80	feet

7. Quarter Corner to Sections 18 and 19, T.34N., R.15E.

Corner position marked by a 2" x 30" aluminum monument set by Milo Stefan, Plat of Survey filed with County Clerk 6-21-81.

8. Quarter Corner to Sections 19 and 24, T.34N., R.14-15E.

Corner position restored from original bearing tree evidence and Basswood line tree south; also, Sugar Maple bearing tree set by N. Smith in 1909, and fences running north and west support this position.

Corner References:

Sugar Maple	6"	N.21°E.	52.95	feet
Sugar Maple	7"	S.6°W.	28.29	feet
Sugar Maple	10"	N.61°W.	47.38	feet
Steel Sign Post		Southwest	1.00	feet

CORNERS ESTABLISHED1. Center Quarter Corner of Section 19.

Corner position established at the intersection of the quarter lines of Section 19.

Corner References:

Basswood	10"	N.27°W.	26.91	feet
Sugar Maple	8"	S.17°E.	34.78	feet
Sugar Maple	6"	N.79°W.	64.08	feet
Steel Sign Post		Northwest	.90	feet

2. North Sixteenth Corner to Sections 19 and 24, T.34N., R.14-15E.

Corner position established on line and midpoint between the west quarter and northwest section corner of Section 19.

Corner References:

Sugar Maple	9"	N.5°E.	24.99	feet
Sugar Maple	11"	S.63°W.	36.79	feet
White Ash	9"	N.62°W.	36.93	feet
Steel Sign Post		South	3.10	feet

Stock No. 26273

Sheet 4 of 5

3. Northwest Sixteenth Corner.

Corner position established at the intersection of the north and west sixteenth lines of Section 19.

Corner References:

Sugar Maple	5"	N.20°E.	1.62	feet
White Ash	10"	S.45°W.	27.08	feet
Sugar Maple	10"	N.40°W.	22.79	feet
Steel Sign Post		South	1.40	feet

4. Center West Sixteenth Corner.

Corner position established at proportionate distance and on line between the center quarter and the west quarter corners of Section 19.

Corner References:

Butternut-Hickory	6"	N.28°E.	22.60	feet
Sugar Maple	7"	S.14°E.	51.20	feet
Yellow Birch	8"	N.35°W.	32.08	feet
Steel Sign Post		South	1.40	feet

5. West Sixteenth Corner to Sections 19 and 30, T.34N., R.15E.

Corner position established at proportionate distance and on line between the south quarter and southwest corner to Section 19.

Corner References:

Sugar Maple	8"	N.47°W.	14.81	feet
Sugar Maple	14"	S.40°W.	15.61	feet
Sugar Maple	8"	S.69°W.	44.44	feet
Steel Sign Post		North	1.20	feet

6. East Sixteenth Corner to Sections 19 and 30, T.34N., R.15E.

Corner position established at midpoint and on line between the south quarter and southeast corner of Section 19.

Corner References:

Black Ash	5"	S.30°E.	16.91	feet
Black Ash	4"	N.76°W.	9.87	feet
Black Ash	7"	N.1°E.	25.54	feet
Steel Sign Post		West	1.10	feet

7. South Sixteenth Corner to Sections 19 and 20, T.34N., R.15E.

Corner position established midpoint and on line between the east quarter and southeast corner of Section 19.

Corner References:

Basswood	5"	N.86°E.	13.48	feet
Sugar Maple	7"	S.38°E.	17.18	feet
Sugar Maple	26"	N.33°W.	4.75	feet
Steel Sign Post		South	1.30	feet

8. Southeast Sixteenth Corner.

Corner position established at the intersection of the east and south sixteenth lines to Section 19.

Corner References:

Sugar Maple	6"	S.39°E.	24.54	feet
Basswood	7"	N.86°W.	42.11	feet
Basswood	8"	N.3°W.	10.96	feet
Steel Sign Post		East	1.10	feet

Stock No. 26273

Sheet 5 of 5

SURVEYOR'S AFFIDAVITState of Wisconsin]
County of Forest] SS

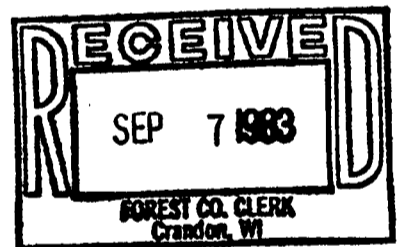
I, Milo E. Stefan, Cadastral Surveyor, USDA, Forest Service, and a registered surveyor in the State of Wisconsin, hereby certify that I have surveyed and subdivided Section 19, Township 34 North, Range 15 East, Fourth Principal Meridian, State of Wisconsin.

The plat map and the notes herewith are a correct representation of the land surveyed and divided. I have surveyed and subdivided said section in accordance with the rules for survey of the public lands and with the statutes of the State of Wisconsin.



Milo E. Stefan
Cadastral Surveyor, USDA, Forest Service
R.L.S., State of Wisconsin
Certificate S-1558

Date of Survey: 1980-1983



Dora C. James