

Stock No. 26273

COUNTY
CLERK

FOREST CO SURVEYOR

FILE # 341520-1983

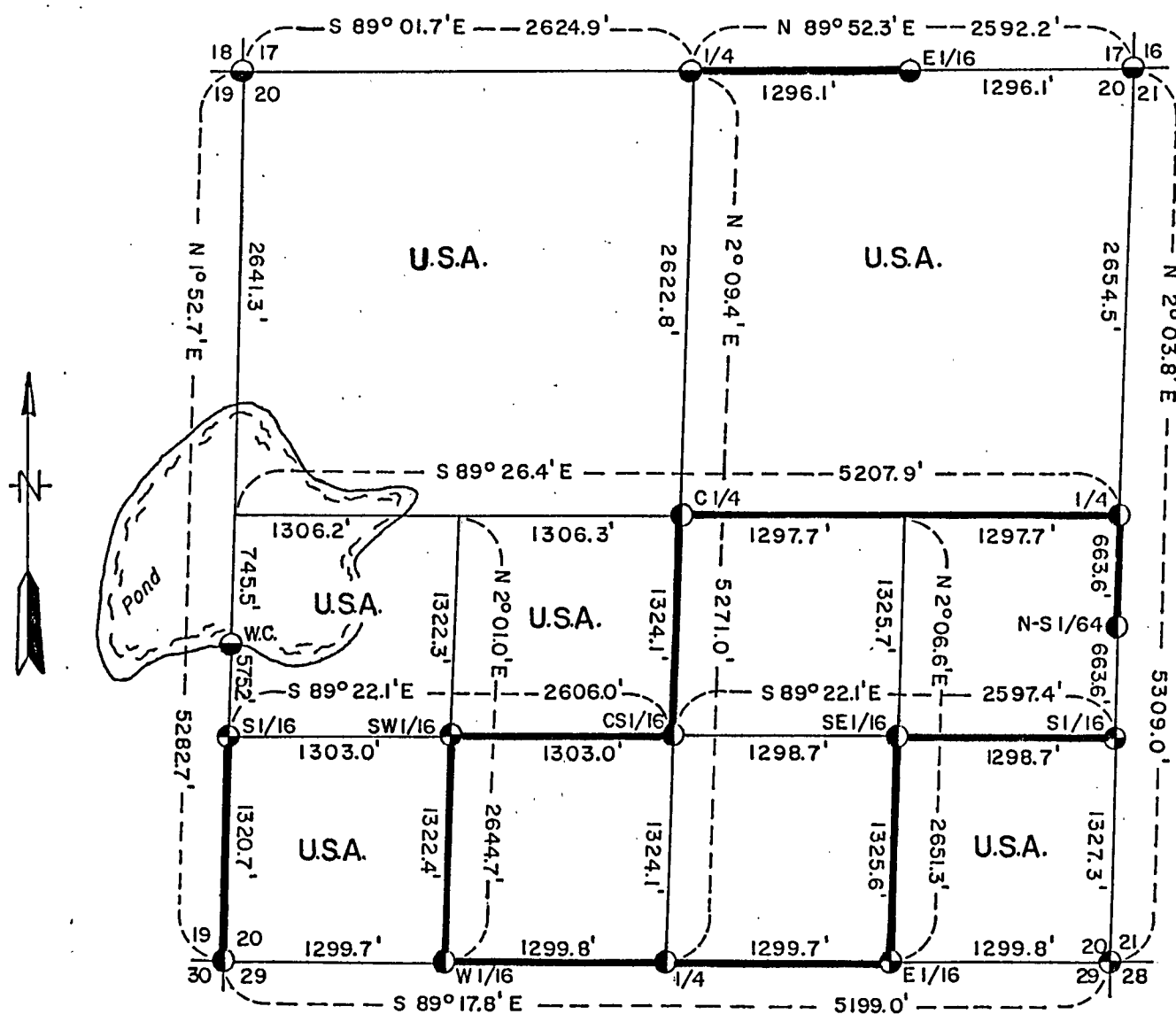
DATE _____ BY _____

SHEET 1 OF 5

PLAT OF SURVEY U.S. GOVERNMENT LAND

Being the NE1/4; SE1/4, SE1/4; NE1/4, SW1/4; W1/2, SW1/4; and NW1/4, Section 20
Township 34 North, Range 15 East, Fourth Principal Meridian
FOREST COUNTY, WISCONSIN

1000 0 1000
SCALE IN FEET



LEGEND

⊕ 2" Diameter Aluminum Monument, 36" Long.

● 2" Diameter Aluminum Monument, 60" Long.

● 2" Diameter Aluminum Monument, 30" Long.

— Marked Boundary Line of U.S. Government Lands.

Conversion Factors:

Feet to Meters - 0.304801

Meters to Feet - 3.280833

Stock No. 26273

Sheet 2 of 5

SURVEY NOTES

This survey was made by the U. S. Department of Agriculture, Forest Service, for the purpose of restoring and establishing corners on the perimeter of Section 20, for establishing subdivisional corners within Section 20, and for locating and marking the boundaries of U. S. Government lands on their perimeter and within Section 20, Township 34 North, Range 15 East, Fourth Principal Meridian, Forest County, Wisconsin.

The U. S. Government lands in this section were acquired from 1935 to 1951.

The original government subdivision survey of this township was made in 1859.

The corner positions recovered, restored, and established by this survey are marked by the monument described in the map legend.

The corner positions established were located to an accuracy of one part in 3000.

The bearings between corner positions are true bearings as determined by solar observations.

The field notes of this survey and a copy of this plat are on file in the Forest Supervisor's Office at Rhinelander, Wisconsin.

CORNERS RECOVERED AND RESTORED1. Section Corner to Sections 20, 21, 28, and 29, T.34N., R.15E.

Corner position restored by double proportionate measure from section corners in all four directions. Monument below road surface.

Corner References:

| | | | | |
|-----------------------|-----|---------|--------|------|
| Red Pine | 5" | N.29°E. | 136.50 | feet |
| Elm | 14" | N.62°E. | 85.14 | feet |
| Pwr. Pole #3514-28W25 | | S.47°E. | 45.55 | feet |
| Steel Sign Post | | North | 11.30 | feet |

2. Section Corner to Sections 19, 20, 29, and 30, T.34N., R.15E.

Corner position restored from remains of original bearing trees and post point.

Corner References:

| | | | | |
|-----------------|----|---------|-------|------|
| Black Spruce | 6" | N.19°E. | 20.30 | feet |
| Cedar | 6" | S.48°E. | 21.51 | feet |
| Black Spruce | 6" | S.6°E. | 9.89 | feet |
| Black Spruce | 6" | N.67°W. | 17.55 | feet |
| Steel Sign Post | | North | 4.40 | feet |

3. Section Corner to Sections 16, 17, 20, and 21, T.34N., R.15E.

Corner position restored by proportionate measure from section corner two miles southerly, one-half mile northerly and from the centerline of Chicago Northwestern Railway right-of-way plat, dated 1916, 274 feet westerly.

Corner References:

| | | | | |
|-----------------|-----|---------|--------|------|
| Sugar Maple | 6" | N.77°E. | 82.12 | feet |
| Black Cherry | 6" | S.30°E. | 85.28 | feet |
| Sugar Maple | 6" | S.72°W. | 260.72 | feet |
| Sugar Maple | 20" | N.48°W. | 266.09 | feet |
| Steel Sign Post | | East | 3.30 | feet |
| Steel Sign Post | | North | 2.00 | feet |

Stock No. 26273

Sheet 3 of 5

4. Section Corner to Sections 17, 18, 19, and 20, T.34N., R.15E.

Corner position restored by double proportionate measurement from quarter corners one-half mile north and east, one mile west, and two miles southerly.

Corner References:

| | | | | |
|-----------------|----|---------|-------|------|
| Sugar Maple | 5" | N.89°E. | 47.07 | feet |
| Yellow Birch | 5" | S.40°E. | 31.38 | feet |
| Hickory | 8" | West | 95.90 | feet |
| Sugar Maple | 5" | N.28°W. | 50.90 | feet |
| Steel Sign Post | | West | 16.60 | feet |

5. Quarter Corner to Sections 17 and 20, T.34N., R.15E.

Corner position found marked by an iron pipe in mound of stone, supported by evidence of the original bearing trees.

Corner References:

| | | | | |
|-----------------|-----|---------|-------|------|
| Basswood | 8" | S.25°E. | 53.05 | feet |
| Hemlock | 18" | S.89°W. | 24.01 | feet |
| Sugar Maple | 14" | N.23°W. | 49.98 | feet |
| Steel Sign Post | | North | 1.90 | feet |

6. Quarter Corner to Sections 20 and 21, T.34N., R.15E.

Corner position restored by single proportionate measurement from section corners one-half mile north and south.

Corner References:

| | | | | |
|-----------------|----|---------|-------|------|
| Black Ash | 5" | S.80°E. | 8.69 | feet |
| Cedar | 5" | S.89°W. | 17.50 | feet |
| Cedar | 7" | N.17°W. | 11.64 | feet |
| Steel Sign Post | | South | 1.90 | feet |

7. Quarter Corner to Sections 20 and 29, T.34N., R.15E.

Corner position restored by single proportionate measurement between the northwest and northeast corners of Section 29.

Corner References:

| | | | | |
|-----------------|----|---------|-------|------|
| Cedar | 6" | East | 16.83 | feet |
| Cedar | 6" | S.37°E. | 9.02 | feet |
| Cedar | 8" | S.28°W. | 14.61 | feet |
| Steel Sign Post | | East | 2.30 | feet |

8. Witness Corner to Quarter Corner to Sections 19 and 20, T.34N., R.15E.

Quarter corner position restored by single proportionate measure between section corners one-half mile north and south. Corner position witnessed 745.5 feet south on section line.

Corner References:

| | | | | |
|-----------------|-----|---------|-------|------|
| Sugar | 4" | S.33°E. | 46.75 | feet |
| Sugar | 7" | S.7°W. | 60.76 | feet |
| Basswood | 14" | N.75°W. | 49.27 | feet |
| Steel Sign Post | | East | 1.80 | feet |

Stock No. 26273

Sheet 4 of 5

CORNERS ESTABLISHED1. West Sixteenth to Sections 20 and 29.

Corner established midpoint and on line between the northwest corner and the north quarter corner of Section 29.

Corner References:

| | | | |
|-----------------|----|---------|------------|
| Black Spruce | 4" | N.23°E. | 75.14 feet |
| Black Spruce | 5" | N.18°W. | 85.00 feet |
| Steel Sign Post | | North | 1.30 feet |

2. East Sixteenth to Sections 20 and 29.

Corner position established at midpoint and on line between the north quarter and northeast section corner of Section 29.

Corner References:

| | | | |
|-----------------|----|---------|------------|
| Sugar | 7" | N.30°E. | 28.23 feet |
| Sugar | 6" | S.76°E. | 17.01 feet |
| Black Cherry | 9" | S.78°W. | 20.58 feet |
| Steel Sign Post | | West | 1.10 feet |

3. South Sixteenth to Sections 19 and 20.

Corner established midpoint and on line between the southwest corner and the west quarter corner of Section 20.

Corner References:

| | | | |
|-----------------|-----|---------|------------|
| Basswood | 5" | N.86°E. | 13.48 feet |
| Sugar | 7" | S.38°E. | 17.18 feet |
| Sugar | 26" | N.33°W. | 4.75 feet |
| Steel Sign Post | | South | 1.30 feet |

4. East Sixteenth to Sections 17 and 20.

Corner established midpoint and on line between the northeast corner and the north quarter corner of Section 20.

Corner References:

| | | | |
|------------------------------|----|---------|------------|
| Black Ash | 5" | N.7°E. | 43.74 feet |
| Red Maple | 5" | S.43°E. | 39.89 feet |
| Black Ash | 5" | S.49°W. | 7.73 feet |
| Steel Sign Post | | West | 2.10 feet |
| Steel Rod--1 $\frac{1}{4}$ " | | S.12°E. | 34.90 feet |

5. South Sixteenth to Sections 20 and 21.

Corner established midpoint and on line between the southeast corner and the east quarter corner of Section 20.

Corner References:

| | | | |
|----------------------|----|---------|------------|
| Balsam | 8" | N.42°E. | 14.67 feet |
| Yellow Birch | 4" | S.89°E. | 9.43 feet |
| Pwr. Pole #3415-21L5 | | S.20°W. | 57.04 feet |
| Steel Sign Post | | East | 1.30 feet |

6. Center South Sixteenth to Section 20.

Corner established midpoint and on line between the center quarter corner and the south quarter corner of Section 20.

Corner References:

| | | | |
|-----------------|----|---------|------------|
| Cedar | 4" | S.36°E. | 6.20 feet |
| Cedar | 4" | S.44°W. | 11.37 feet |
| Cedar | 6" | N.40°W. | 11.40 feet |
| Steel Sign Post | | West | 2.20 feet |

Stock No. 26273

Sheet 5 of 5

7. Southeast Sixteenth to Section 20.

Corner established at the intersection of the south and east one-sixteenth lines of Section 20.

Corner References:

| | | | | |
|-----------------|----|---------|-------|------|
| Cedar | 9" | N.45°E. | 73.83 | feet |
| Cedar | 8" | S.42°W. | 4.75 | feet |
| Cedar | 5" | N.14°W. | 74.08 | feet |
| Steel Sign Post | | East | 1.10 | feet |

8. Southwest Sixteenth to Section 20.

Corner established at the intersection of the south and west one-sixteenth lines of Section 20.

Corner References:

| | | | | |
|-----------------|-----|---------|-------|------|
| Sugar | 4" | N.45°E. | 33.69 | feet |
| Sugar | 15" | S.81°E. | 49.06 | feet |
| Sugar | 7" | N.63°W. | 8.24 | feet |
| Steel Sign Post | | South | 1.30 | feet |

9. Center Quarter to Section 20, T.34N., R.15E.

Corner established at the intersection of the one-quarter lines of Section 20.

Corner References:

| | | | | |
|-----------------|-----|---------|-------|------|
| Black Ash | 5" | N.41°E. | 47.71 | feet |
| Cedar | 10" | S.27°E. | 38.36 | feet |
| Black Ash | 5" | S.45°W. | 4.15 | feet |
| Steel Sign Post | | East | 1.60 | feet |

10. North-South Sixty-Fourth to Sections 20 and 21.

Corner established midpoint and on line between the east quarter corner and south sixteenth of Section 20.

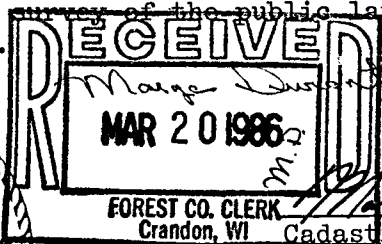
Corner References:

| | | | | |
|-----------------|-----|---------|-------|------|
| Cedar | 6" | N.14°E. | 18.95 | feet |
| Cedar | 11" | South | 1.68 | feet |
| Cedar | 8" | S.70°W. | 19.14 | feet |
| Steel Sign Post | | North | 1.80 | feet |

SURVEYOR'S AFFIDAVITState of Wisconsin]
County of Forest] SS

I, Milo E. Stefan, Cadastral Surveyor, U. S. Forest Service and a registered surveyor in the State of Wisconsin, hereby certify that I have surveyed and subdivided Section 20, Township 34 North, Range 15 East, Fourth Principal Meridian, State of Wisconsin.

The plat map and the notes herewith are a correct representation of the land surveyed and divided. I have surveyed and subdivided said section in accordance with the rules for survey of the public lands and with the statutes of the State of Wisconsin.



Milo E. Stefan
Cadastral Surveyor, U. S. Forest Service
R.L.S., State of Wisconsin
Certificate S-1558

Plat Ready For Filing:

Dale S. Staege
District Ranger

Date of Survey: 1983