

Stock No. 26273

FOREST CO SURVEYOR

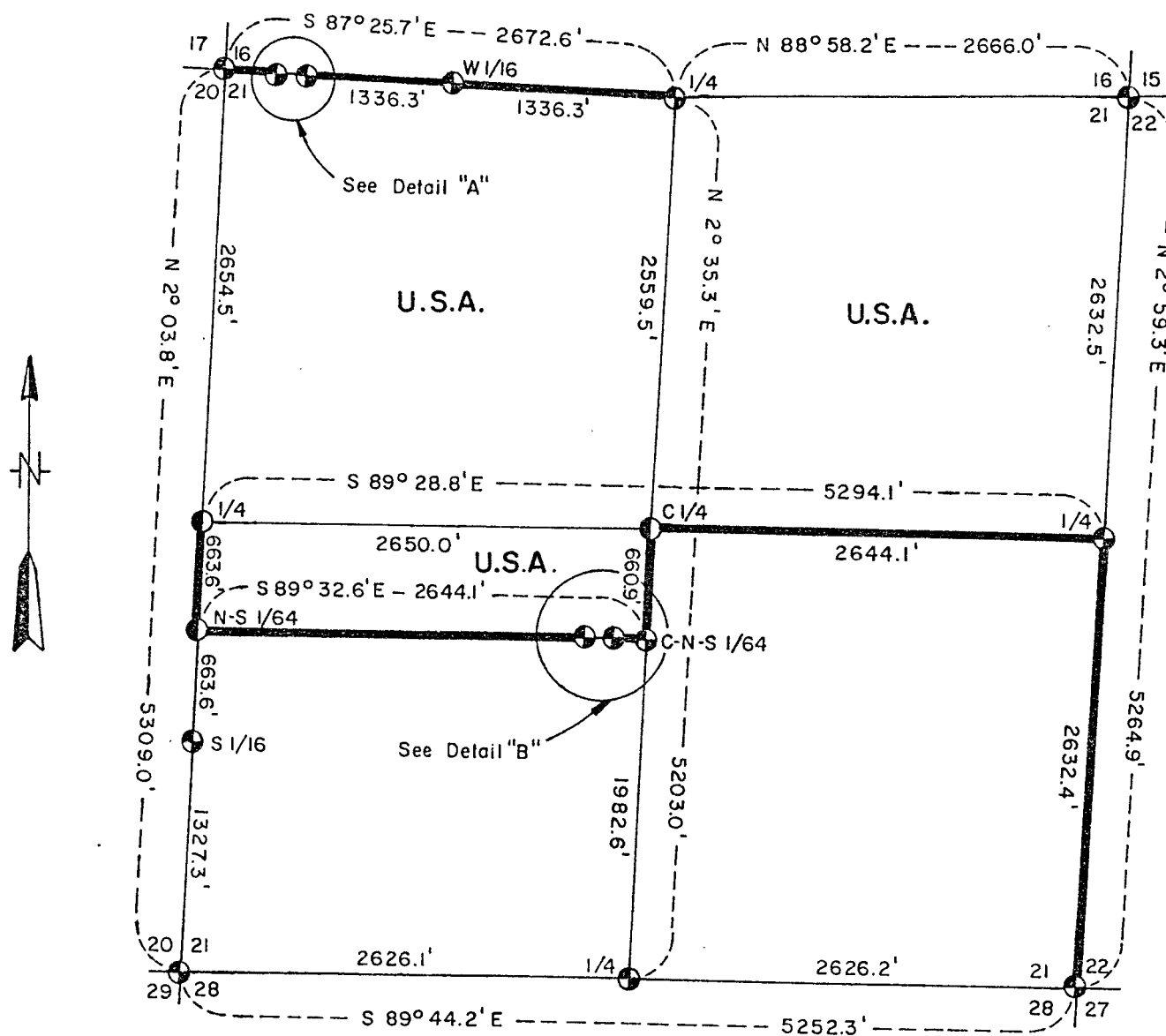
FILE # 34521-1983

DATE _____ BY _____

SHEET 1 OF 6

PLAT OF SURVEY U.S. GOVERNMENT LAND

Being the NE1/4; N1/2, N1/2, SW1/4 and the NW1/4 all in Section 21
Township 34 North, Range 15 East, Fourth Principal Meridian
FOREST COUNTY, WISCONSIN



LEGEND

⊕ 2" Diameter Aluminum Monument - 36" Long

⊙ 2" Diameter Aluminum Monument - 60" Long

— Marked Boundary Line of U.S. Government Lands.

Conversion Factor:

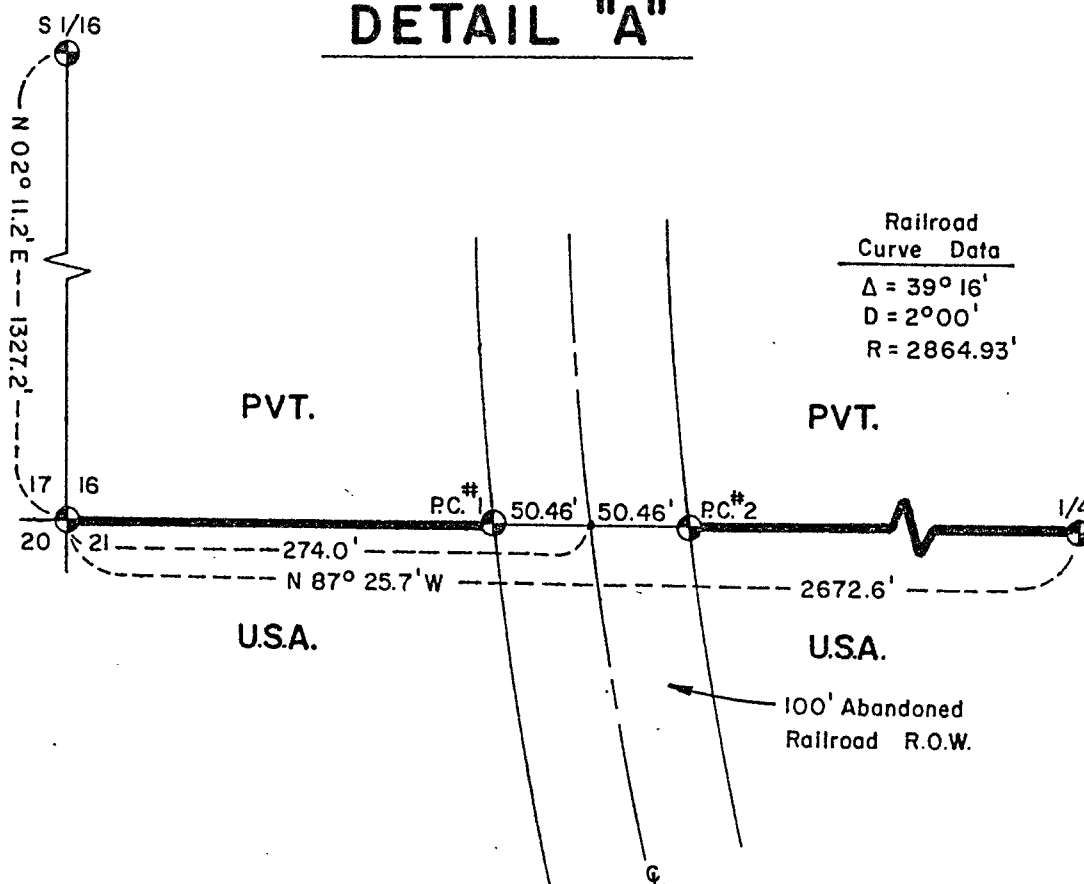
Feet to Meters - 0.304801

Meters to Feet - 3.280833

Stock No. 26273

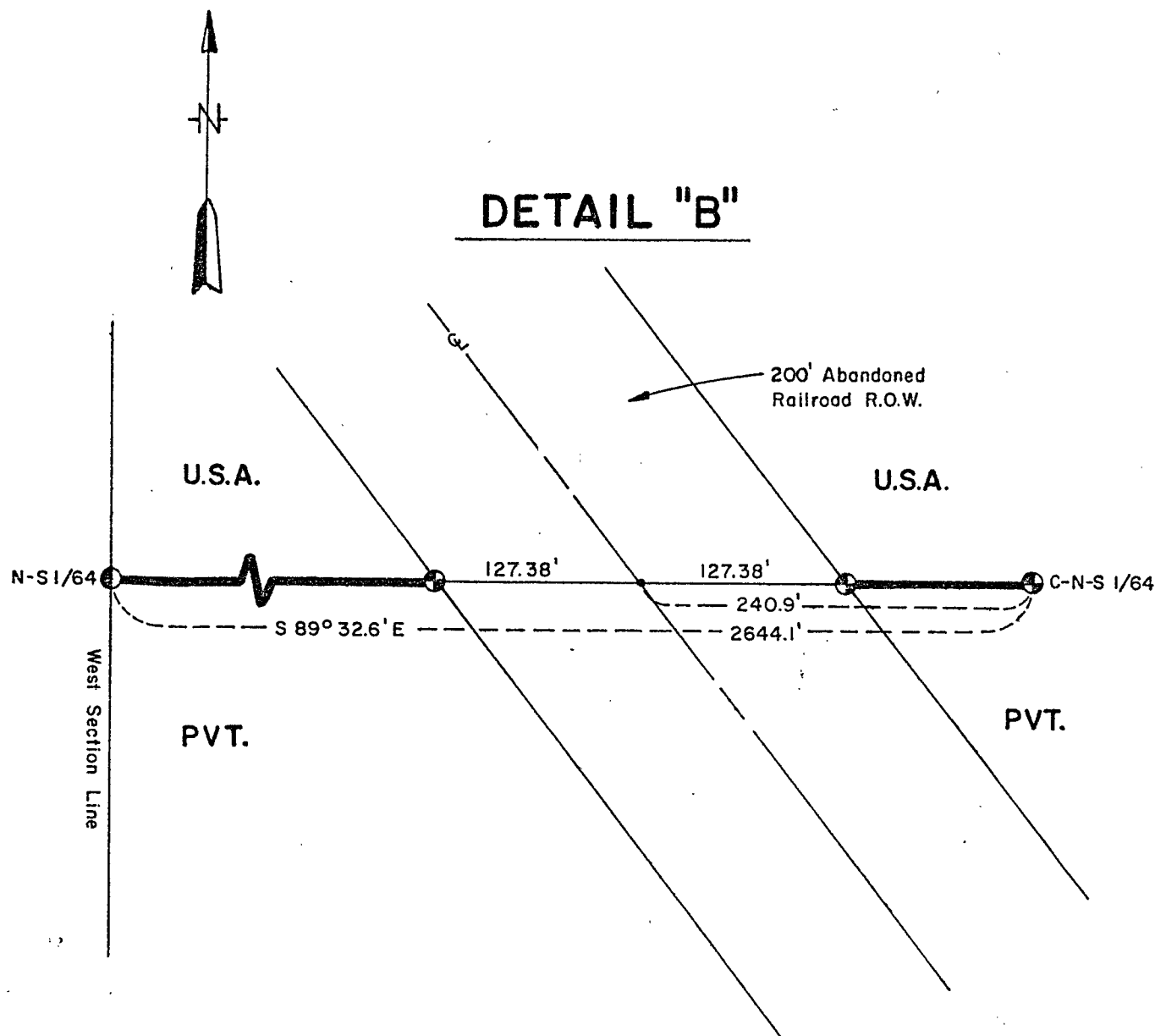
SHEET 2 OF 6

DETAIL "A"



Railroad Curve Data	
Δ	$39^{\circ} 16'$
D	$2^{\circ} 00'$
R	$2864.93'$

DETAIL "B"



Stock No. 26273

Sheet 3 of 6

SURVEY NOTES

This survey was made by the U. S. Department of Agriculture, Forest Service, for the purpose of restoring and establishing corners on the perimeter of Section 21, for establishing subdivisional corners within Section 21, and for locating and marking the boundaries of U. S. Government lands on their perimeter and within Section 21, Township 34 North, Range 15 East, Fourth Principal Meridian, Forest County, Wisconsin.

The U. S. Government lands in this section were acquired in 1935, 1936, 1938, and 1982.

The original government subdivision survey of this township was made in 1859.

The corner positions recovered, restored, and established by this survey are marked by the monument described in the map legend.

The corner positions established were located to an accuracy of one part in 3000.

The bearings between corner positions are true bearings as determined by solar observations.

The field notes of this survey and a copy of this plat are on file in the Forest Supervisor's Office at Rhineland, Wisconsin.

CORNERS RECOVERED AND RESTORED1. Section Corner to Sections 16-17-20-21, T.34N., R.15E.

Corner position found marked with a 2" x 30" aluminum pipe with aluminum cap. Plat filed with County Clerk, March 5, 1982.

Corner References:

Sugar Maple	6"	N.77°E.	82.12	feet
Black Cherry	6"	S.30°E.	85.28	feet
Sugar Maple	6"	S.72°W.	260.72	feet
Sugar Maple	20"	N.48°W.	266.09	feet
Steel Sign Post		East	3.30	feet
Steel Sign Post		North	2.00	feet

2. Section Corner to Sections 15-16-21-22, T.34N., R.15E.

Corner position restored by lost corner methods from $\frac{1}{2}$ mile north, east, and west, and 1 mile south.

Corner References:

Sugar Maple	7"	N.30°E.	17.56	feet
Basswood	18"	S.24°W.	23.78	feet
Yellow Birch	12"	S.57°W.	13.44	feet
Sugar Maple	7"	N.23°W.	24.05	feet
Steel Sign Post		East	1.60	feet

Stock No. 26273

Sheet 4 of 6

3. Section Corner to Sections 21-22-27-28, T.34N., R.15E.

Corner position restored at intersection of centerlines of roads north and west, and fence lines east and south.

Corner References:

Sugar	10"	N.52°E.	34.64 feet
Sugar	9"	S.66°E.	23.66 feet
Sugar	6"	S.54°W.	52.69 feet
Basswood	7"	N.52°W.	35.50 feet
Steel Sign Post		South	2.20 feet

4. Section Corner to Sections 20-21-28-29, T.34N., R.15E.

Corner position restored by double proportionate measure to section corners--1 mile in all four cardinal directions.

Corner References:

Red Pine	5"	N.29°E.	136.50 feet
Elm	14"	N.62°E.	85.14 feet
Pwr. Pole #3514-28W25		S.47°E.	45.55 feet
Steel Sign Post		North	11.30 feet

5. Quarter Corner to Sections 16 and 21, T.34N., R.15E.

Corner position found marked by a 2" iron pipe in intersection of 2 woods' roads.

Corner References:

Basswood	6"	S.42°W.	56.75 feet
Basswood	10"	N.80°E.	34.39 feet
Sugar	14"	N.23°E.	63.19 feet
Steel Sign Post		West	2.20 feet

6. Quarter Corner to Sections 21 and 22, T.34N., R.15E.

Corner position restored by single proportionate measure between section corners north and south $\frac{1}{2}$ mile.

Corner References:

Yellow Birch	12"	N.79°E.	27.35 feet
Sugar	20"	S.48°E.	30.14 feet
Sugar	6"	S.21°W.	20.95 feet
Steel Sign Post		West	2.00 feet

7. Quarter Corner to Sections 21 and 28, T.34N., R.15E.

Corner position restored by single proportionate measure between section corners east and west $\frac{1}{2}$ mile.

Corner References:

Sugar	4"	N.70°E.	34.74 feet
Sugar	5"	S.54°E.	16.40 feet
Sugar	6"	S.78°W.	29.48 feet
Steel Sign Post		Southwest	1.60 feet

8. Quarter Corner to Sections 20 and 21, T.34N., R.15E.

Corner position restored by single proportionate measure between section corners north and south $\frac{1}{2}$ mile.

Corner References:

Black Ash	5"	S.80°E.	8.69 feet
Cedar	5"	S.89°W.	17.50 feet
Cedar	7"	N.17°W.	11.64 feet
Steel Sign Post		South	1.90 feet

Stock No. 26273

Sheet 5 of 6

CORNERS ESTABLISHED1. Center Quarter to Section 21, T.34N., R.15E.

Corner established at the intersection of the one-quarter lines of Section 21.

Corner References:

Cedar	3"	S.22°W.	13.08	feet
Cedar	4"	N.17°W.	17.95	feet
Steel Sign Post		South	1.20	feet

2. South One-Sixteenth to Sections 20 and 21.

Corner established midpoint and on line between the southwest corner and the west quarter corner of Section 21.

Corner References:

Balsam	8"	N.42°E.	14.67	feet
Yellow Birch	4"	S.89°E.	9.43	feet
Pwr. Pole #3415-21L5		S.20°W.	57.04	feet
Steel Sign Post		East	1.30	feet

3. West One-Sixteenth to Sections 16 and 21.

Corner established midpoint and on line between the northwest corner and the north quarter corner of Section 21.

Corner References:

White Spruce	10"	S.65°E.	46.17	feet
Sugar	5"	S.74°W.	19.63	feet
Yellow Birch	5"	N.35°W.	28.20	feet
Steel Sign Post		East	1.70	feet

4. North-South Sixty-Fourth to Sections 20-21.

Corner established midpoint and on line between the west quarter corner and south sixteenth corner of Section 21.

Corner References:

Cedar	6"	N.14°E.	18.95	feet
Cedar	11"	South	1.68	feet
Cedar	8"	S.70°W.	19.14	feet
Steel Sign Post		North	1.80	feet

5. Center North-South Sixty-Fourth to Section 21.

Corner established midpoint and on line between the center quarter and center south sixteenth of Section 21.

Corner References:

Basswood	8"	N.27°E.	9.32	feet
Basswood	8"	S.11°W.	22.27	feet
Sugar	7"	N.53°W.	14.00	feet
Steel Sign Post		North	3.70	feet

6. Property Corner No. 1, Section 21.Corner established at the intersection of the north section line and the west right-of-way of the abandoned railroad grade of Section 21.

Corner References:

Basswood	5"	S.68°W.	46.60	feet
Sugar	12"	N.39°W.	63.74	feet
Steel Sign Post		West	1.20	feet

Stock No. 26273

Sheet 6 of 6

7. Property Corner No. 2, Section 21.Same description as Corner No. 1 (listed in Item No. 6)--except east right-of-way.

Corner References:

Basswood	16"	N.19°E.	26.43 feet
Aspen	10"	S.73°E.	33.48 feet
Steel Sign Post		East	0.70 feet

8. Property Corner No. 3, Section 21.Corner established at the intersection of the north-south sixty-fourth line and the west right-of-way of the abandoned railroad grade of Section 21.

Corner References:

Basswood	8"	S.83°E.	34.45 feet
Sugar	5"	S.47°W.	49.68 feet
Aspen	7"	N.71°W.	21.35 feet
Steel Sign Post		West	1.90 feet

9. Property Corner No. 4, Section 21.Same description as Corner No. 3 (listed in Item No. 8)--except east right-of-way.

Corner References:

Sugar	11"	N.25°E.	24.71 feet
Sugar	13"	N.49°W.	19.60 feet
Steel Sign Post		East	1.30 feet

SURVEYOR'S AFFIDAVITState of Wisconsin]
County of Forest] SS

I, Milo E. Stefan, Cadastral Surveyor, U. S. Forest Service, and a registered surveyor in the State of Wisconsin, hereby certify that I have surveyed and subdivided Section 21, Township 34 North, Range 15 East, Fourth Principal Meridian, State of Wisconsin.

The plat map and the notes herewith are a correct representation of the land surveyed and divided. I have surveyed and subdivided said section in accordance with the rules for survey of the public lands and with the statutes of the State of Wisconsin.



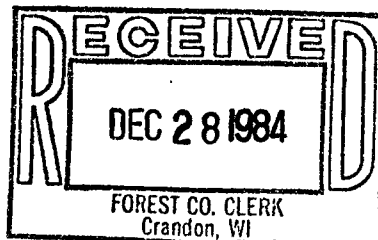
Milo E. Stefan

Cadastral Surveyor, U. S. Forest Service
R.L.S., State of Wisconsin
Certificate S-1558

Plat Ready For Filing:

Dale B. Stage
District Ranger

Date of Survey: 1983



Sarah L. Dyer
Deputy Co. Clerk