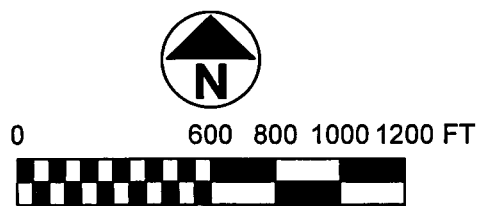
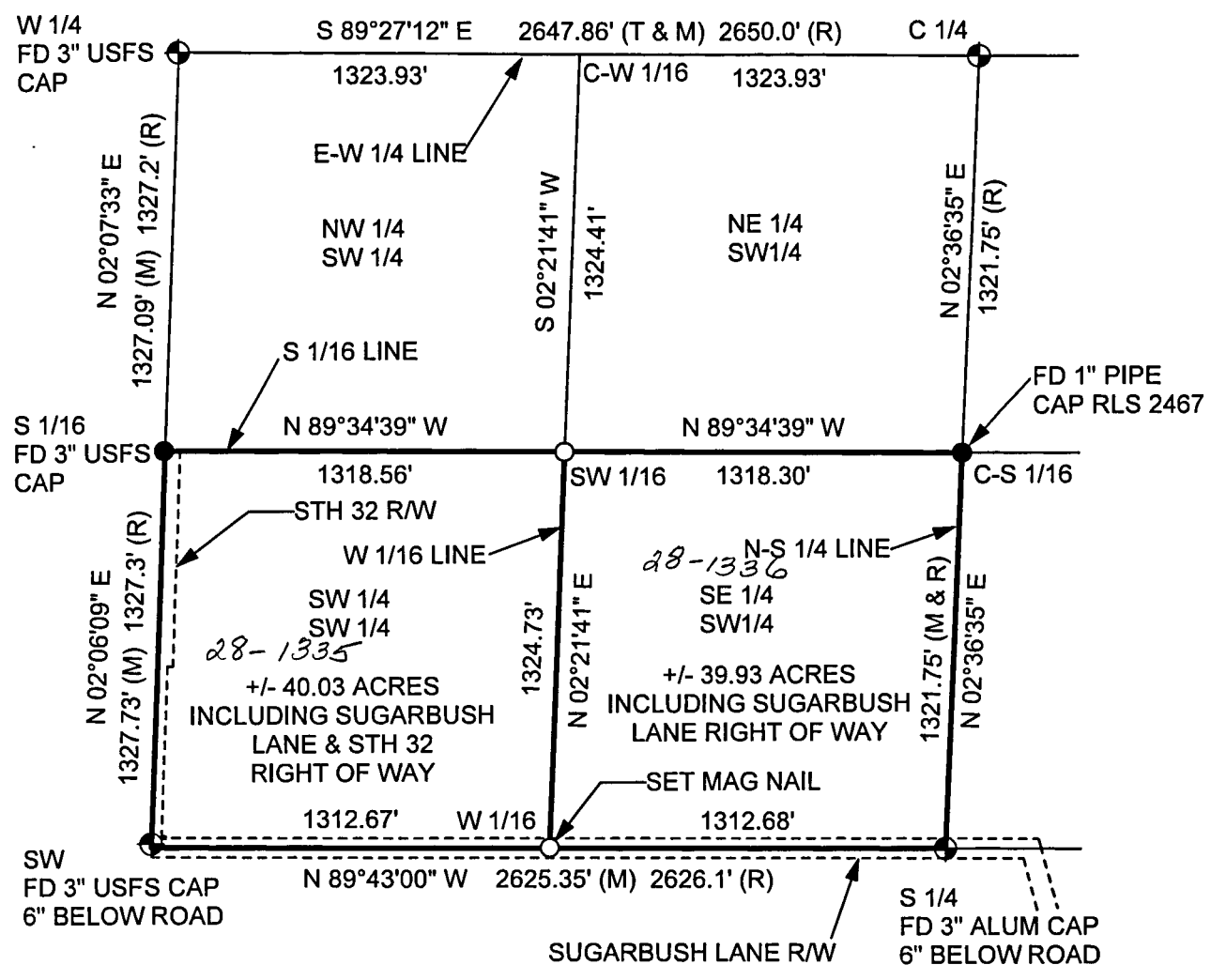


12/12/12

FOREST CO SURVEY
FILE # 34521-2012 1212
DATE BY

PLAT OF SURVEY

THE SW 1/4 OF THE SW 1/4 & SE 1/4 OF THE SW 1/4,
SECTION 21, T34N, R15E,
TOWN OF WABENO, FOREST COUNTY, WISCONSIN



SCALE 1" = 600'

NOTE: RECORD DATA
SECTION BREAK PERFORMED BY
U.S.F.S. M. STEFAN RLS #1558
IN SURVEY PERFORMED IN 1983.

I HEREBY CERTIFY ON BEHALF OF MOUNTAIN ENGINEERING, INC. THAT SAID SURVEY AND THE ABOVE MAP WERE MADE IN ACCORDANCE WITH THE ACCEPTABLE PROFESSIONAL STANDARDS IN ACCORDANCE WITH APPLICABLE SECTIONS OF CHAPTER AE-7 OF WISCONSIN ADMINISTRATION CODE AND THAT THE INFORMATION CONTAINED THEREON IS, TO THE BEST OF MY KNOWLEDGE, INFORMATION AND BELIEF, A TRUE AND ACCURATE REPRESENTATION THEREOF.

Zachary J. Stevens
ZACHARY J. STEVENS, RLS 2467-008

LEGEND:

- GOVERNMENT CORNER
- SET 1" PIPE WITH SURVEY CAP OR AS NOTED
- FOUND CORNER AS NOTED
- (T) = TOTAL DISTANCE
- FD = FOUND
- (R) = RECORD DATA BY STEFAN RLS #1558

MOUNTAIN ENGINEERING, INC. AND SURVEYING

N2960 North US Hwy. 2
Iron Mountain, Michigan 49801
Phone 906-779-5762 Fax 906-779-5789
Email mtnengineering@chartermi.net

PREPARED FOR:

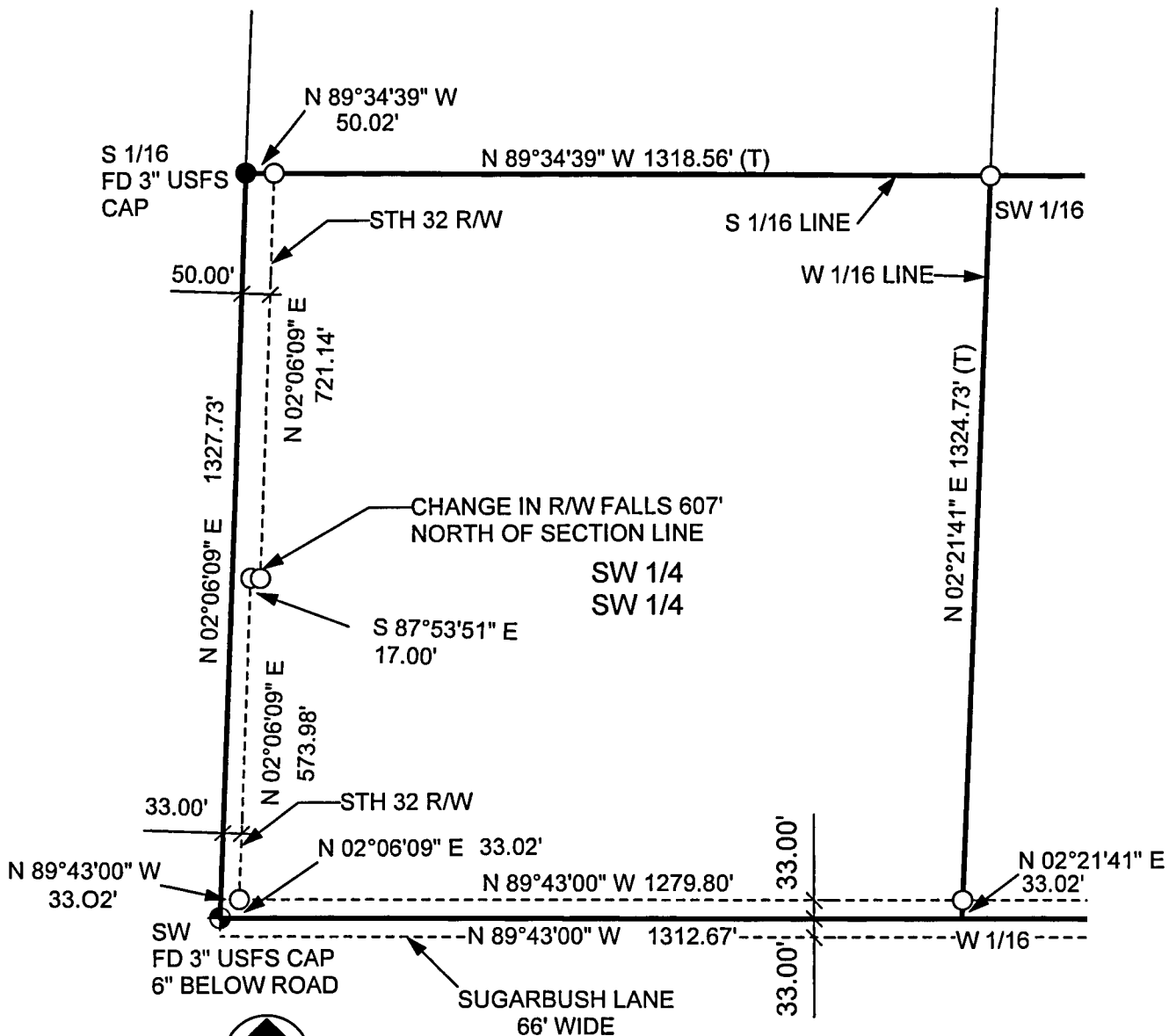
FOREST COUNTY POTAWATOMI
PO BOX 340
CRANDON, WI 54520

DATE: DECEMBER 12, 2012	BEARING BASIS: GPS GRID AZIMUTH	JOB NAME: FCP SECTION 21-34-15	PAGE 1 OF 3
----------------------------	------------------------------------	-----------------------------------	-------------

THE OWNER AGREES TO INDEMNIFY AND HOLD MOUNTAIN ENGINEERING, INC. HARMLESS FROM ANY DAMAGE, LIABILITY OR COST, INCLUDING ATTORNEY'S FEES AND COST OF DEFENSE ARISING FROM ANY CHANGES OR ALTERATIONS MADE BY ANYONE OTHER THAN MOUNTAIN ENGINEERING, INC., OR FROM ANY REUSE OF THE DRAWINGS AND DATA WITHOUT THE PRIOR WRITTEN CONSENT OF MOUNTAIN ENGINEERING, INC.

PLAT OF SURVEY

PART OF THE SW 1/4 OF THE SE 1/4, SECTION 21, T34N, R15E,
TOWN OF WABENO, FOREST COUNTY, WISCONSIN



STH 32 RIGHT OF WAY DETERMINED FROM
WDOT PLANS PROJECT 7796.

SUGARBUSH LANE RIGHT OF WAY
DETERMINED FROM RESOLUTION IN
VOL 124 PG 357, NO WIDTH STATED.

I HEREBY CERTIFY ON BEHALF OF MOUNTAIN
ENGINEERING, INC. THAT SAID SURVEY AND THE ABOVE
MAP WERE MADE IN ACCORDANCE WITH THE ACCEPTABLE
PROFESSIONAL STANDARDS IN ACCORDANCE WITH
APPLICABLE SECTIONS OF CHAPTER AE-7 OF WISCONSIN
ADMINISTRATION CODE AND THAT THE INFORMATION
CONTAINED THEREON IS, TO THE BEST OF MY
KNOWLEDGE, INFORMATION AND BELIEF, A TRUE AND
ACCURATE REPRESENTATION THEREOF.

LEGEND:

- GOVERNMENT CORNER
- SET 1" PIPE WITH SURVEY CAP
- FOUND CORNER AS NOTED
- (T) = TOTAL DISTANCE
- FD = FOUND

ZACHARY J. STEVENS, RLS 2467-008

MOUNTAIN ENGINEERING, INC. AND SURVEYING

N2960 North US Hwy. 2
Iron Mountain, Michigan 49801
Phone 906-779-5762 Fax 906-779-5789
Email mtnengineering@chartermi.net

PREPARED FOR:

FOREST COUNTY POTAWATOMI
PO BOX 340
CRANDON, WI 54520

DATE:

DECEMBER 12, 2012

BEARING BASIS:

GPS GRID AZIMUTH

JOB NAME:

FCP SECTION 21-34-15

PAGE 2 OF 3

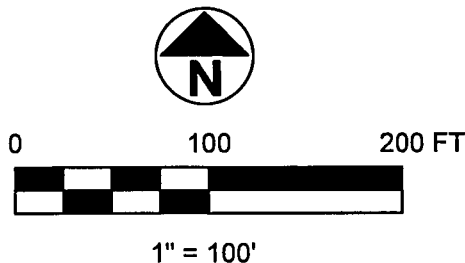
THE OWNER AGREES TO INDEMNIFY AND HOLD MOUNTAIN ENGINEERING, INC. HARMLESS FROM ANY DAMAGE, LIABILITY OR
COST, INCLUDING ATTORNEY'S FEES AND COST OF DEFENSE ARISING FROM ANY CHANGES OR ALTERATIONS MADE BY
ANYONE OTHER THAN MOUNTAIN ENGINEERING, INC., OR FROM ANY REUSE OF THE DRAWINGS AND DATA WITHOUT THE
PRIOR WRITTEN CONSENT OF MOUNTAIN ENGINEERING, INC.

PLAT OF SURVEY

PART OF THE SW 1/4 OF THE SE 1/4, SECTION 21, T34N, R15E,
TOWN OF WABENO, FOREST COUNTY, WISCONSIN

NOTE:
CONVERSATIONS WITH WDOT REGARDING
LOCATION OF METAL R/W SIGNS REVEALED
NO REASON WHY SIGNS WERE SO FAR
OUT OF LOCATION.

WEST LINE OF SECTION



EXISTING METAL R/W SIGN
FALLS 19.6' EAST OF
SECTION LINE

EXISTING METAL R/W SIGN
FALLS 36.8' EAST OF
SECTION LINE

EXISTING POWER LINE,
POWER POLES FALL WITHIN
STH 32 R/W

STH 32 R/W

33.00'

EXISTING METAL R/W SIGN
FALLS 41.4' EAST OF
SECTION LINE

EXISTING PHONE PED

SUGARBUSH LANE R/W

33.00'

SW
FD 3" USFS CAP
6" BELOW ROAD

I HEREBY CERTIFY ON BEHALF OF MOUNTAIN
ENGINEERING, INC. THAT SAID SURVEY AND THE ABOVE
MAP WERE MADE IN ACCORDANCE WITH THE ACCEPTABLE
PROFESSIONAL STANDARDS IN ACCORDANCE WITH
APPLICABLE SECTIONS OR CHAPTER AE-7 OF WISCONSIN
ADMINISTRATION CODE AND THAT THE INFORMATION
CONTAINED THEREON IS TO THE BEST OF MY
KNOWLEDGE, INFORMATION AND BELIEF, A TRUE AND
ACCURATE REPRESENTATION THEREOF.

LEGEND:

- ⊕ GOVERNMENT CORNER
- SET 1" PIPE WITH SURVEY CAP
- FOUND CORNER AS NOTED
- (T) = TOTAL DISTANCE
- FD = FOUND

ZACHARY J. STEVENS, RLS 2467-008

MOUNTAIN ENGINEERING, INC. AND SURVEYING

N2960 North US Hwy. 2
Iron Mountain, Michigan 49801
Phone 906-779-5762 Fax 906-779-5789
Email mtnengineering@chartermi.net

PREPARED FOR:

FOREST COUNTY POTAWATOMI
PO BOX 340
CRANDON, WI 54520

DATE:

DECEMBER 12, 2012

BEARING BASIS:

GPS GRID AZIMUTH

JOB NAME:

FCP SECTION 21-34-15

PAGE 3 OF 3

THE OWNER AGREES TO INDEMNIFY AND HOLD MOUNTAIN ENGINEERING, INC. HARMLESS FROM ANY DAMAGE, LIABILITY OR
COST, INCLUDING ATTORNEY'S FEES AND COST OF DEFENSE ARISING FROM ANY CHANGES OR ALTERATIONS MADE BY
ANYONE OTHER THAN MOUNTAIN ENGINEERING, INC., OR FROM ANY REUSE OF THE DRAWINGS AND DATA WITHOUT THE
PRIOR WRITTEN CONSENT OF MOUNTAIN ENGINEERING, INC.