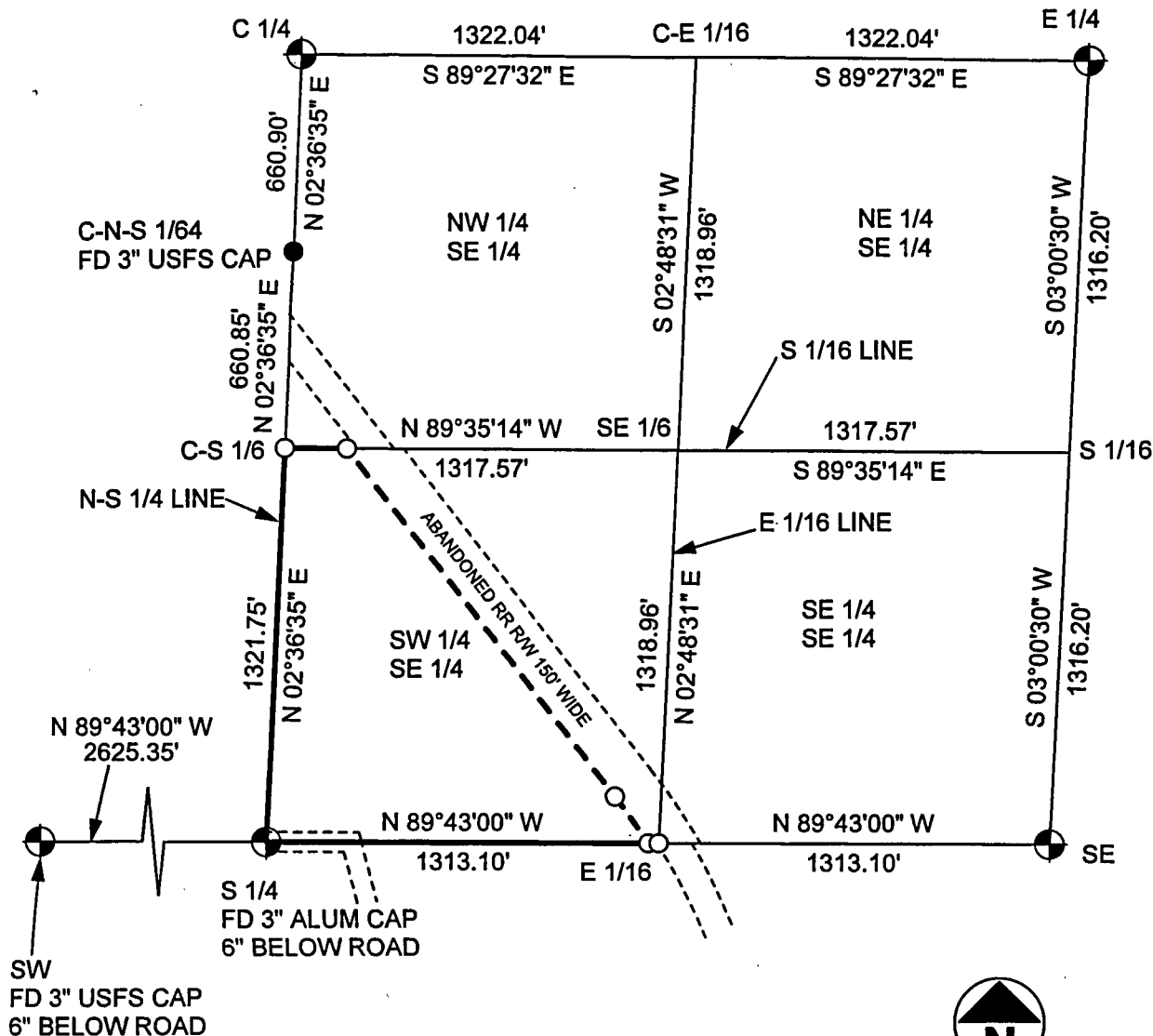


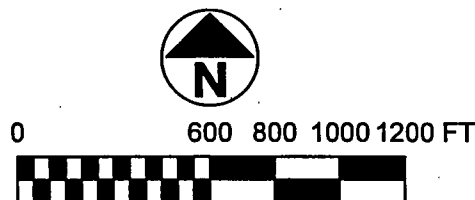
21-34-15

PLAT OF SURVEY

PART OF THE SW 1/4 OF THE SE 1/4, SECTION 21, T34N, R15E,
TOWN OF WABENO, FOREST COUNTY, WISCONSIN



NOTE:
SECTION BREAK PERFORMED BY
U.S.F.S. M. STEFAN RLS #1558
IN SURVEY PERFORMED IN 1983.



SCALE 1" = 600'

I HEREBY CERTIFY ON BEHALF OF MOUNTAIN
ENGINEERING, INC. THAT SAID SURVEY AND THE ABOVE
MAP WERE MADE IN ACCORDANCE WITH THE ACCEPTABLE
PROFESSIONAL STANDARDS IN ACCORDANCE WITH
APPLICABLE SECTIONS OF CHAPTER AE-7 OF WISCONSIN
ADMINISTRATION CODE AND THAT THE INFORMATION
CONTAINED THEREON IS, TO THE BEST OF MY
KNOWLEDGE, INFORMATION AND BELIEF, A TRUE AND
ACCURATE REPRESENTATION THEREOF.

Zachary J. Stevens
ZACHARY J. STEVENS, RLS 2467-008

FOREST CO SURVEYOR
FILE # 34521-2012.0622
DATE _____ BY _____

LEGEND:

- GOVERNMENT CORNER
- SET 1" PIPE WITH SURVEY CAP
- FOUND CORNER AS NOTED
- (T) = TOTAL DISTANCE
- FD = FOUND

MOUNTAIN ENGINEERING, INC. AND SURVEYING

N2960 North US Hwy. 2
Iron Mountain, Michigan 49801
Phone 906-779-5762 Fax 906-779-5789
Email mtnengineering@chartermi.net

PREPARED FOR:

FOREST COUNTY POTAWATOMI
PO BOX 340
CRANDON, WI 54520

DATE:

JUNE 22, 2012

BEARING BASIS:

GPS GRID AZIMUTH

JOB NAME:

FCP SECTION 21-34-15

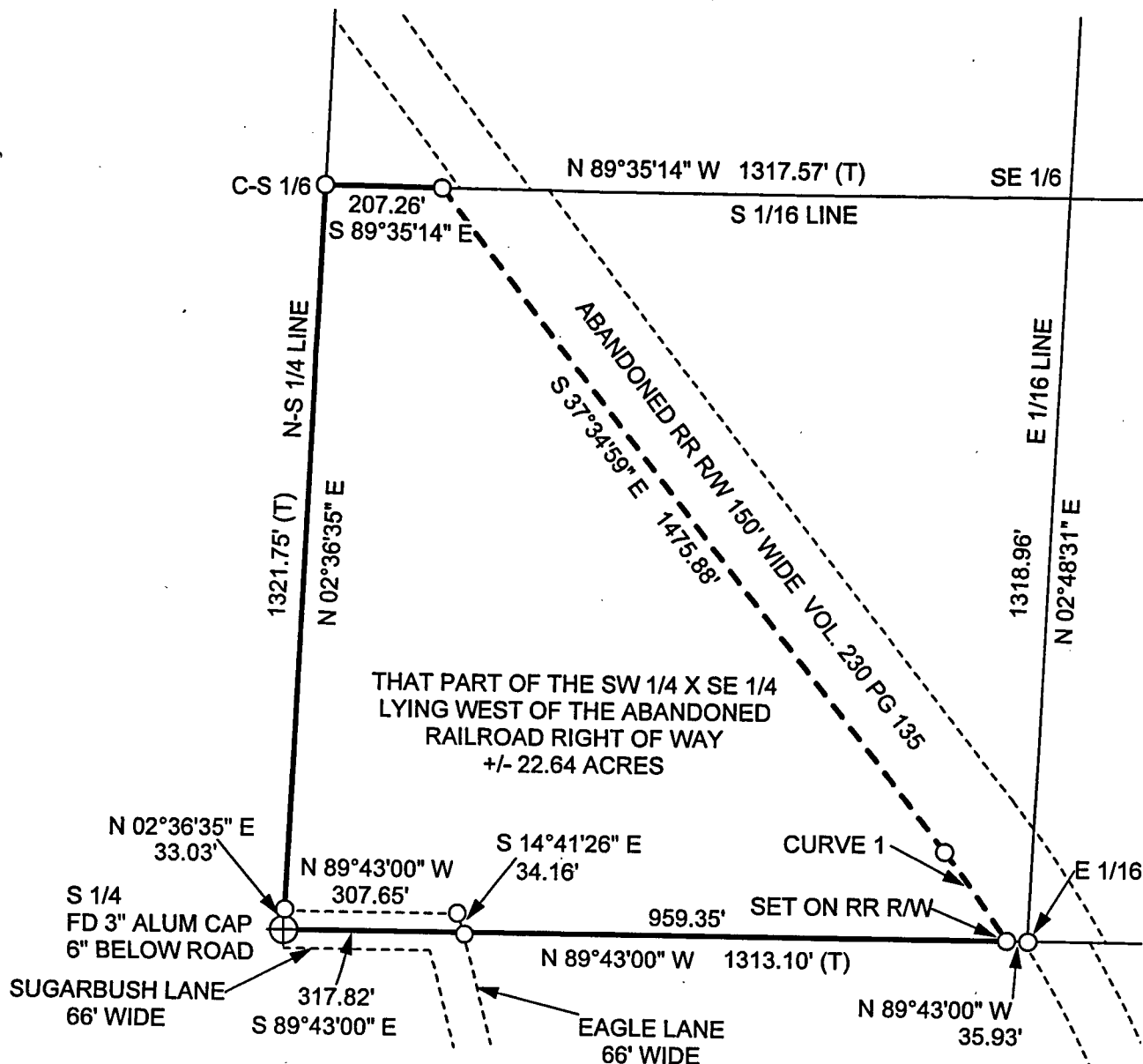
PAGE 1 OF 2

THE OWNER AGREES TO INDEMNIFY AND HOLD MOUNTAIN ENGINEERING, INC. HARMLESS FROM ANY DAMAGE, LIABILITY OR COST, INCLUDING ATTORNEY'S FEES AND COST OF DEFENSE ARISING FROM ANY CHANGES OR ALTERATIONS MADE BY ANYONE OTHER THAN MOUNTAIN ENGINEERING, INC., OR FROM ANY REUSE OF THE DRAWINGS AND DATA WITHOUT THE PRIOR WRITTEN CONSENT OF MOUNTAIN ENGINEERING, INC.

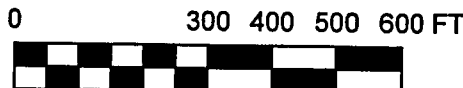
28-1340

PLAT OF SURVEY

PART OF THE SW 1/4 OF THE SE 1/4, SECTION 21, T34N, R15E,
TOWN OF WABENO, FOREST COUNTY, WISCONSIN



CURVE 1 DATA
RADIUS 2013.86'
DELTA 05°25'00"
LENGTH 190.39'
LONG CHORD S35°08'57"E 190.32'



SCALE 1" = 300'

I HEREBY CERTIFY ON BEHALF OF MOUNTAIN ENGINEERING, INC. THAT SAID SURVEY AND THE ABOVE MAP WERE MADE IN ACCORDANCE WITH THE ACCEPTABLE PROFESSIONAL STANDARDS IN ACCORDANCE WITH APPLICABLE SECTIONS OF CHAPTER AE-7 OF WISCONSIN ADMINISTRATION CODE AND THAT THE INFORMATION CONTAINED THEREON IS TO THE BEST OF MY KNOWLEDGE, INFORMATION AND BELIEF, A TRUE AND ACCURATE REPRESENTATION THEREOF.

Zachary J. Stevens
ZACHARY J. STEVENS, RLS 2467-008

LEGEND:

- GOVERNMENT CORNER
- SET 1" PIPE WITH SURVEY CAP
- FOUND CORNER AS NOTED
- (T) = TOTAL DISTANCE
- FD = FOUND

MOUNTAIN ENGINEERING, INC. AND SURVEYING

N2960 North US Hwy. 2
Iron Mountain, Michigan 49801
Phone 906-779-5762 Fax 906-779-5789
Email mtneengineering@chartermi.net

PREPARED FOR:

FOREST COUNTY POTAWATOMI
PO BOX 340
CRANDON, WI 54520

DATE:

JUNE 22, 2012

BEARING BASIS:

GPS GRID AZIMUTH

JOB NAME:

FCP SECTION 21-34-15

PAGE 2 OF 2

THE OWNER AGREES TO INDEMNIFY AND HOLD MOUNTAIN ENGINEERING, INC. HARMLESS FROM ANY DAMAGE, LIABILITY OR COST, INCLUDING ATTORNEY'S FEES AND COST OF DEFENSE ARISING FROM ANY CHANGES OR ALTERATIONS MADE BY ANYONE OTHER THAN MOUNTAIN ENGINEERING, INC., OR FROM ANY REUSE OF THE DRAWINGS AND DATA WITHOUT THE PRIOR WRITTEN CONSENT OF MOUNTAIN ENGINEERING, INC.

028-01340-0000

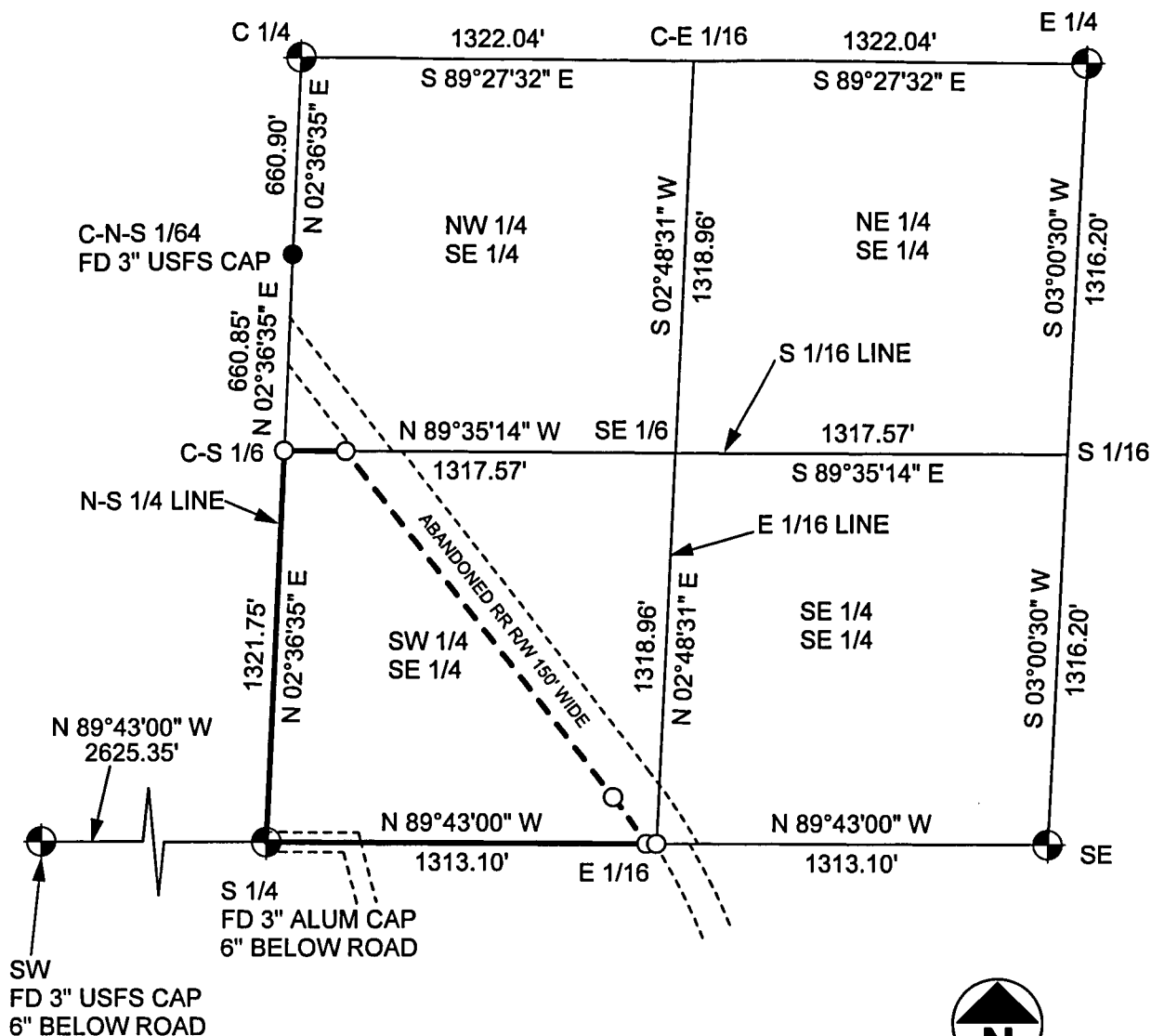
6-27-12

FOREST COUNTY SURVEYOR

FILE # 341521-20120622

DATE _____ BY _____ PLAT OF SURVEY

PART OF THE SW 1/4 OF THE SE 1/4, SECTION 21, T34N, R15E,
TOWN OF WABENO, FOREST COUNTY, WISCONSIN



NOTE:
SECTION BREAK PERFORMED BY
U.S.F.S. M. STEFAN RLS #1558
IN SURVEY PERFORMED IN 1983.

I HEREBY CERTIFY ON BEHALF OF MOUNTAIN
ENGINEERING, INC. THAT SAID SURVEY AND THE ABOVE
MAP WERE MADE IN ACCORDANCE WITH THE ACCEPTABLE
PROFESSIONAL STANDARDS IN ACCORDANCE WITH
APPLICABLE SECTIONS OF CHAPTER AE-7 OF WISCONSIN
ADMINISTRATION CODE AND THAT THE INFORMATION
CONTAINED THEREON IS, TO THE BEST OF MY
KNOWLEDGE, INFORMATION AND BELIEF, A TRUE AND
ACCURATE REPRESENTATION THEREOF.

Zachary J. Stevens
ZACHARY J. STEVENS, RLS 2467-008

**MOUNTAIN ENGINEERING, INC.
AND SURVEYING**

N2960 North US Hwy. 2
Iron Mountain, Michigan 49801
Phone 906-779-5762 Fax 906-779-5789
Email mtnengineering@chartermi.net

PREPARED FOR:

FOREST COUNTY POTAWATOMI
PO BOX 340
CRANDON, WI 54520

DATE:

JUNE 22, 2012

BEARING BASIS:

GPS GRID AZIMUTH

JOB NAME:

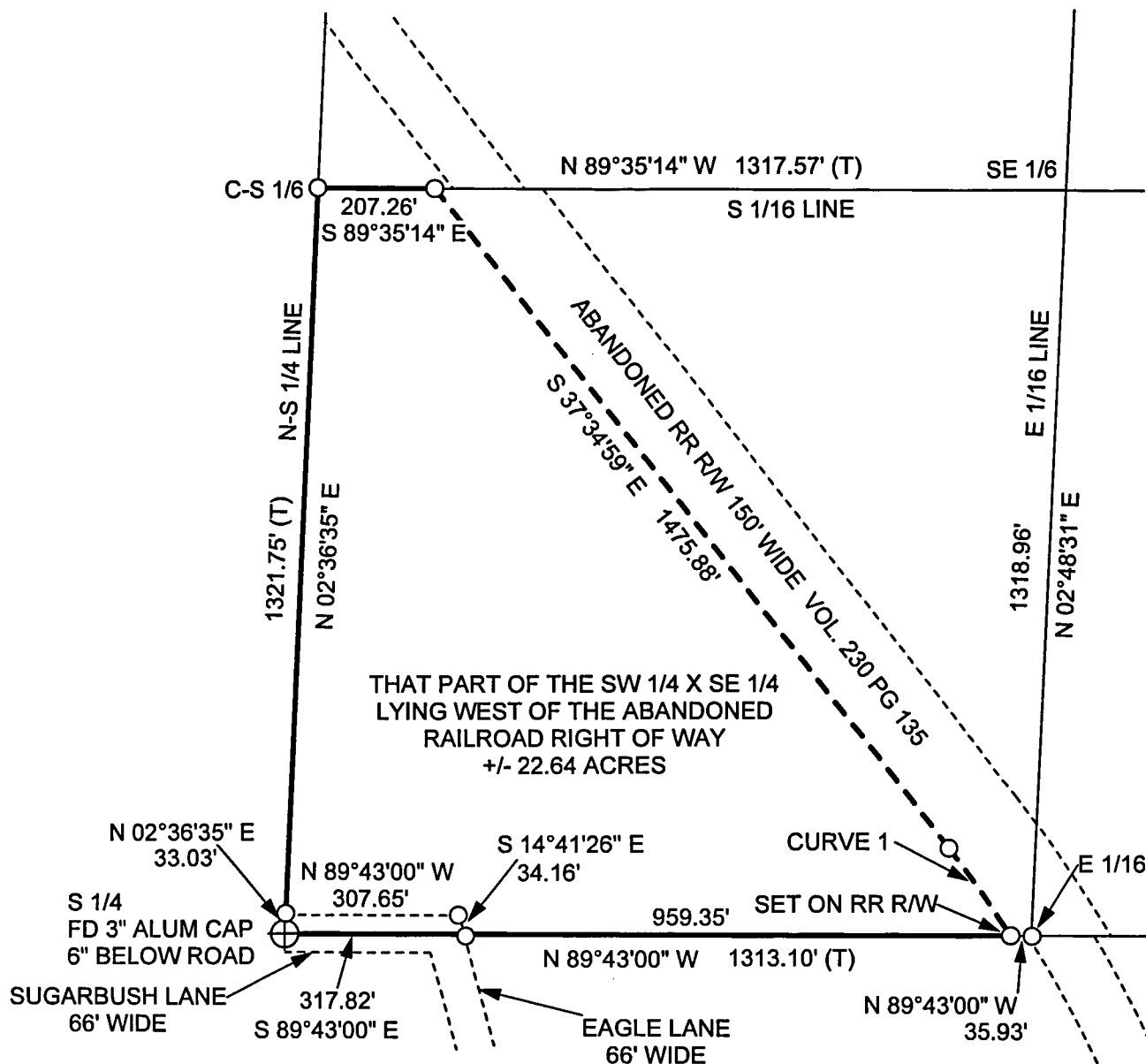
FCP SECTION 21-34-15

PAGE 1 OF 2

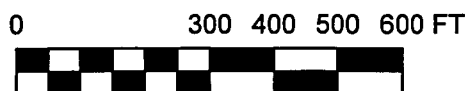
THE OWNER AGREES TO INDEMNIFY AND HOLD MOUNTAIN ENGINEERING, INC. HARMLESS FROM ANY DAMAGE, LIABILITY OR
COST, INCLUDING ATTORNEY'S FEES AND COST OF DEFENSE ARISING FROM ANY CHANGES OR ALTERATIONS MADE BY
ANYONE OTHER THAN MOUNTAIN ENGINEERING, INC., OR FROM ANY REUSE OF THE DRAWINGS AND DATA WITHOUT THE
PRIOR WRITTEN CONSENT OF MOUNTAIN ENGINEERING, INC.

PLAT OF SURVEY

PART OF THE SW 1/4 OF THE SE 1/4, SECTION 21, T34N, R15E,
TOWN OF WABENO, FOREST COUNTY, WISCONSIN



CURVE 1 DATA
 RADIUS 2013.86'
 DELTA 05°25'00"
 LENGTH 190.39'
 LONG CHORD S35°08'57"E 190.32'



SCALE 1" = 300'

I HEREBY CERTIFY ON BEHALF OF MOUNTAIN ENGINEERING, INC. THAT SAID SURVEY AND THE ABOVE MAP WERE MADE IN ACCORDANCE WITH THE ACCEPTABLE PROFESSIONAL STANDARDS IN ACCORDANCE WITH APPLICABLE SECTIONS OF CHAPTER AE-7 OF WISCONSIN ADMINISTRATION CODE AND THAT THE INFORMATION CONTAINED THEREON IS, TO THE BEST OF MY KNOWLEDGE, INFORMATION AND BELIEF, A TRUE AND ACCURATE REPRESENTATION THEREOF.

LEGEND:

- ⊕ GOVERNMENT CORNER
- SET 1" PIPE WITH SURVEY CAP
- FOUND CORNER AS NOTED
- (T) = TOTAL DISTANCE
- FD = FOUND

ZACHARY J. STEVENS, RLS 2467-008

MOUNTAIN ENGINEERING, INC. AND SURVEYING

N2960 North US Hwy. 2
Iron Mountain, Michigan 49801
Phone 906-779-5762 Fax 906-779-5789
Email mtnengineering@chartermi.net

PREPARED FOR:

FOREST COUNTY POTAWATOMI
PO BOX 340
CRANDON, WI 54520

DATE:

JUNE 22, 2012

BEARING BASIS:

GPS GRID AZIMUTH

JOB NAME:

FCP SECTION 21-34-15

PAGE 2 OF 2

THE OWNER AGREES TO INDEMNIFY AND HOLD MOUNTAIN ENGINEERING, INC. HARMLESS FROM ANY DAMAGE, LIABILITY OR COST, INCLUDING ATTORNEY'S FEES AND COST OF DEFENSE ARISING FROM ANY CHANGES OR ALTERATIONS MADE BY ANYONE OTHER THAN MOUNTAIN ENGINEERING, INC., OR FROM ANY REUSE OF THE DRAWINGS AND DATA WITHOUT THE PRIOR WRITTEN CONSENT OF MOUNTAIN ENGINEERING, INC.