

FOREST CO SURVEYOR

FILE # 34527-199312

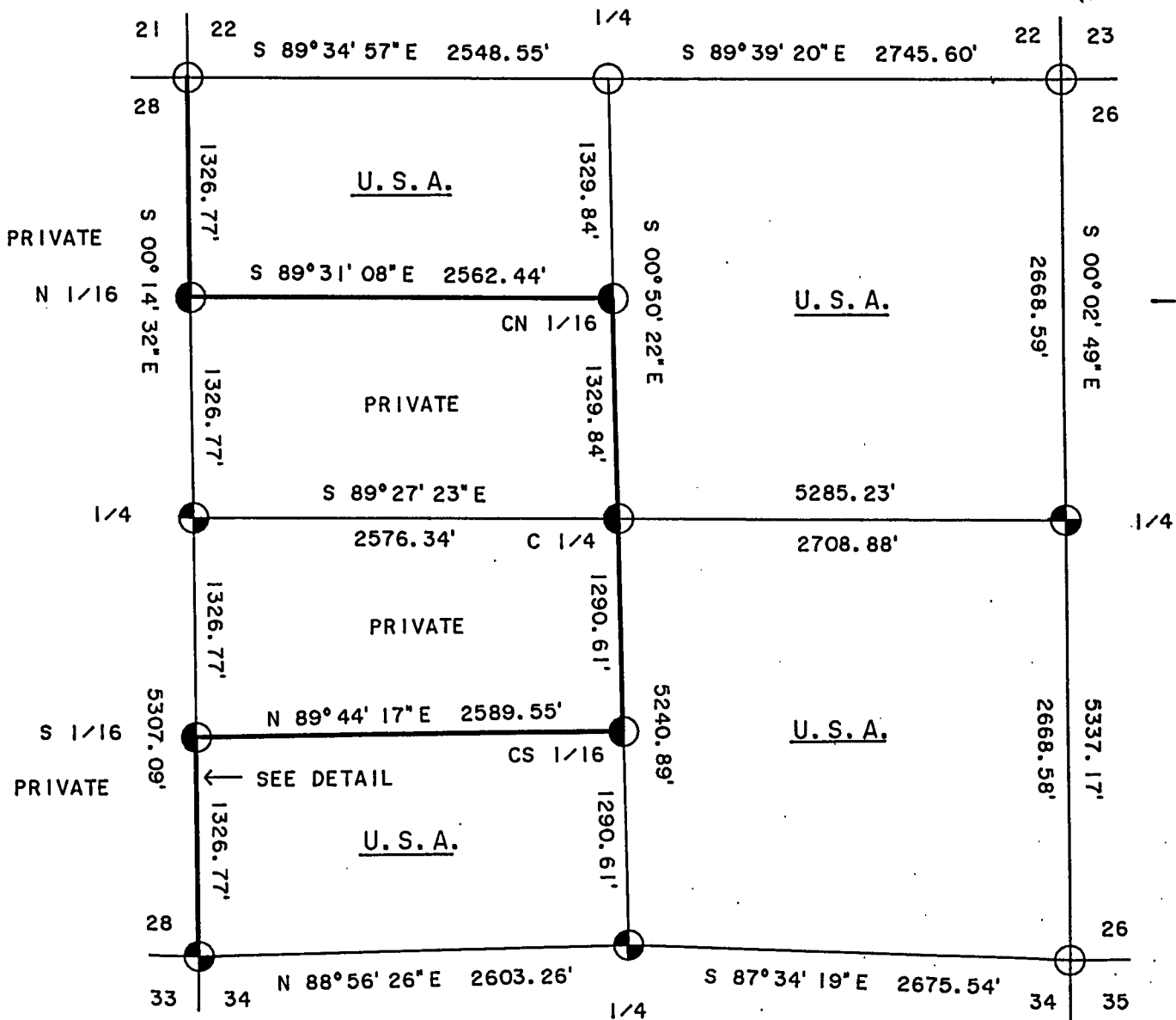
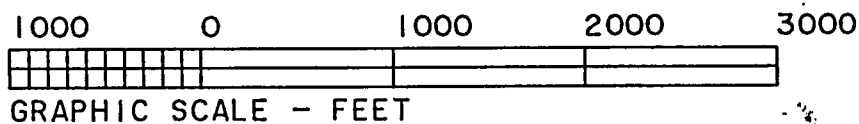
DATE \_\_\_\_\_ BY \_\_\_\_\_

SHEET 1 OF 5

## PLAT OF SURVEY

## U. S. GOVERNMENT LANDS

BEING THE EAST 1/2; THE SOUTH 1/2, S.W. 1/4; AND THE NORTH 1/2,  
N.W. 1/4; SECTION 27; TOWNSHIP 34 NORTH; RANGE 15 EAST;  
FOURTH PRINCIPAL MERIDIAN;  
FOREST COUNTY, WISCONSIN.



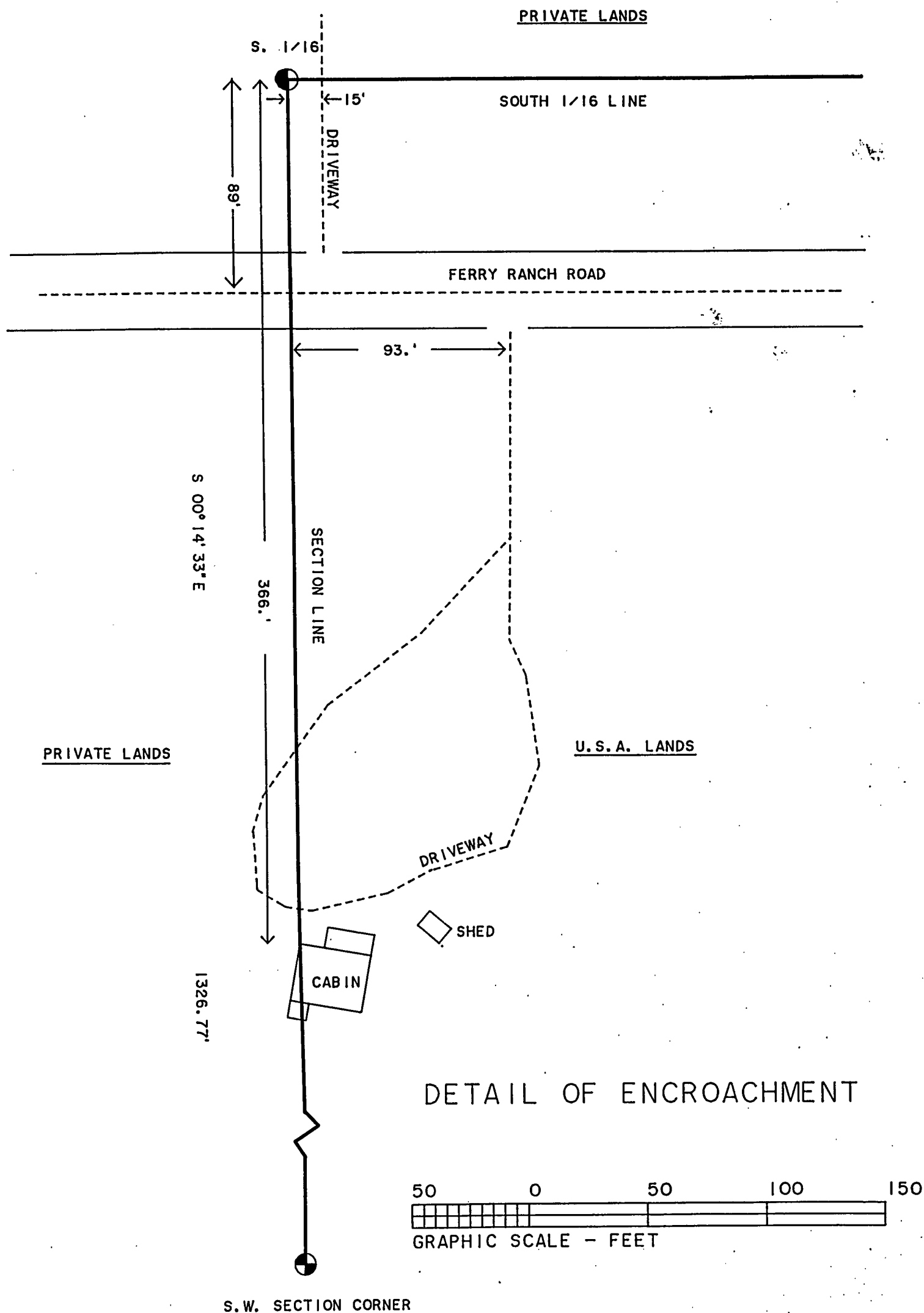
## LEGEND

○ 2 1/2" ALUMINUM MONUMENT, FOUND IN PLACE.

⊕ 2 1/2" X 36" ALUMINUM MONUMENT, SET THIS SURVEY.

● 1" X 36" ALUMINUM MONUMENT, SET THIS SURVEY.

— MARKED PROPERTY BOUNDARY OF U. S. GOVERNMENT LANDS.



SURVEY NOTES

This survey was made by the U.S. Department of Agriculture, Forest Service, for the purpose of restoring and establishing corners on the perimeter of Section 27 for establishing subdivisional corners within Section 27 and for locating and marking the boundaries of U.S. Government land on thier perimeter and within Section 27 Township 34 North, Range 15 East, 4th Principal Meridian, Forest County, Wisconsin.

The U.S. Government lands in this section were acquired in 1936, 1944 & 1951.

The original government subdivision survey of this township was made in 1859. Nathan Smith made local surveys in 1906 and 1909.

The corner positions recovered, restored and established by this survey are marked by the monument described in the map legend.

The corner positions established were located to an accuracy of one part in 5000.

The bearings between corner positions are true bearings as determined by solar observations.

The field notes of this survey and a copy of this plat are on file in the Forest Supervisor's Office at Rhinelander, Wisconsin.

CORNERS RECOVERED OR RESTORED

1. Corner Common to Sections 22, 23, 26 and 27.  
Corner found monumented by Milo Stefan, R.L.S. Corner Certificate on file in Forest County.
2. Corner Common to Sections 26, 27, 34, and 35.  
Corner found monumented by Alan Harrison, R.L.S. Corner Certificate on file in Forest County.
3. Corner Common to Sections 27, 28, 33 and 34.  
Corner restored by retracement of N. Smith's 1906 survey of Sections 28 and 33 and natural feature calls to creek east and south.  
Corner References:

Tamarack	3"	N.58°E.	43.06 feet
Tamarack	3"	S.2°W.	42.95 feet
Tamarack	4"	N.27°W.	35.23 feet
Iron Pipe	1"	S.89°W.	28.47 feet
Steel Sign Post		East	1.07 feet

4. Corner Common to Sections 21, 22, 27 and 28.  
Corner found monumented by Milo Stefan, R.L.S. Corner Certificate on file in Forest County.
5. Quarter Corner Common to Sections 22 and 27.  
Corner found monumented by Milo Stefan, R.L.S. Corner Certificate on file in Forest County.
6. Quarter Corner Common to Sections 26 and 27.  
Corner restored by proportionate measurement between Sections corners north and south one-half mile.  
Corner References:

Sugar	9"	N.45°E.	34.11 feet
Sugar	8"	S.52°E.	30.77 feet
Hemlock	12"	N.84°W.	27.94 feet
Steel Sign Post		North	1.10 feet

7. Quarter Corner Common to Sections 27 and 34.

Corner restored at intersection of Ferry Ranch Road and old east-west road surveyed by N. Smith in 1906 and existing Ferry Ranch Road surveyed by N. Smith in 1910.

Corner References:

Twin Maple	9"	S.72°E.	46.63 feet
Maple	10"	S.29°W.	32.09 feet
Maple	7"	N.30°W.	41.34 feet
Steel Sign Post		West	0.82 feet

8. Quarter Corner Common to Sections 27 and 28.

Corner restored by proportionate measure between Section corners north and south one-half mile.

Corner References:

Sugar	24"	S.48°E.	6.56 feet
Sugar	7"	S.50°W.	24.08 feet
Basswood	4"	N.15°W.	14.01 feet
Steel Sign Post		East	1.59 feet

Corners Established1. South One-Sixteenth Corner Common to Sections 27 and 28.

Corner established mid-point and on line between the southwest Section corner and west quarter corner.

Corner References:

Aspen	6"	S.88°E.	88.50 feet
Centerline-Road		East	15.00 feet
Centerline-Road		South	89.00 feet
Steel Sign Post		S.E.	0.70 feet

2. North One-Sixteenth Corner Common to Sections 27 and 28.

Corner established mid-point and on line between the northwest Section corner and west quarter corner.

Corner References:

Aspen	5"	S.74°W.	15.28 feet
Maple	6"	N.40°W.	30.60 feet
Steel Sign Post		N.E.	1.50 feet

3. Center Quarter Corner of Section 27.

Corner established at the intersection of the one-quarter lines of Section 27.

Corner References:

Aspen	10"	S.79°E.	11.40 feet
White Pine	13"	S.26°W.	29.15 feet
Steel Sign Post		East	0.45 feet

4. Center-south One-Sixteenth Corner of Section 27.

Corner established mid-point and on line between the south quarter corner and center quarter corner.

Corner References:

Basswood	7"	S.29°W.	25.05 feet
Basswood	10"	N.40°W.	10.56 feet
Steel Sign Post		N.E.	0.45 feet

5. Center-north One-Sixteenth Corner of Section 27.

Corner established mid-point and on line between the north quarter corner and center quarter corner.

Corner References:

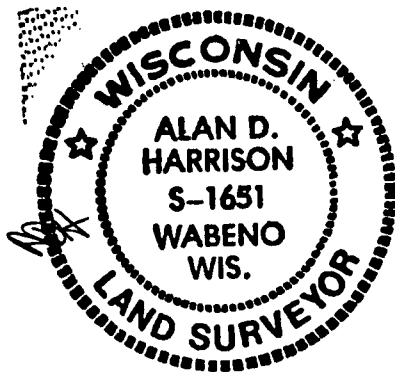
Maple	5"	N.28°E.	10.78 feet
Maple	6"	S.42°E.	36.47 feet
Steel Sign Post		N.E.	0.45 feet

SURVEYOR'S AFFIDAVIT

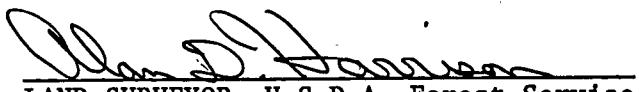
State of Wisconsin]  
County of Forest ]

I, Alan D. Harrison, Land Surveyor, U.S.D.A. Forest Service and a Registered Land Surveyor in the State of Wisconsin, do hereby certify that I have surveyed and subdivided Section 27, Township 34 North, Range 15 East, Fourth Principal Meridian, State of Wisconsin.

The plat map and the notes herewith are a correct representation of the land surveyed and divided. I have surveyed and subdivided said section in accordance with the rules for survey of the public lands and with the statutes of the State of Wisconsin.

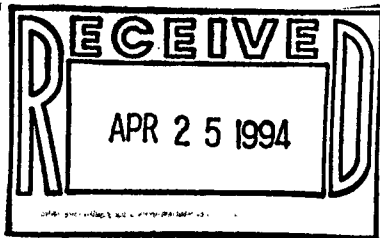


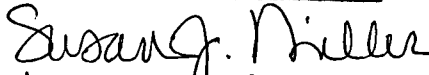
Date of Survey: December 1993

  
LAND SURVEYOR, U.S.D.A. Forest Service  
R.L.S. Number S-1651  
State of Wisconsin

Plat ready for filing:

  
for District Ranger



  
Deputy County Clerk