

COPY

FOREST CO SURVEYOR

FILE # 34532-1976

DATE

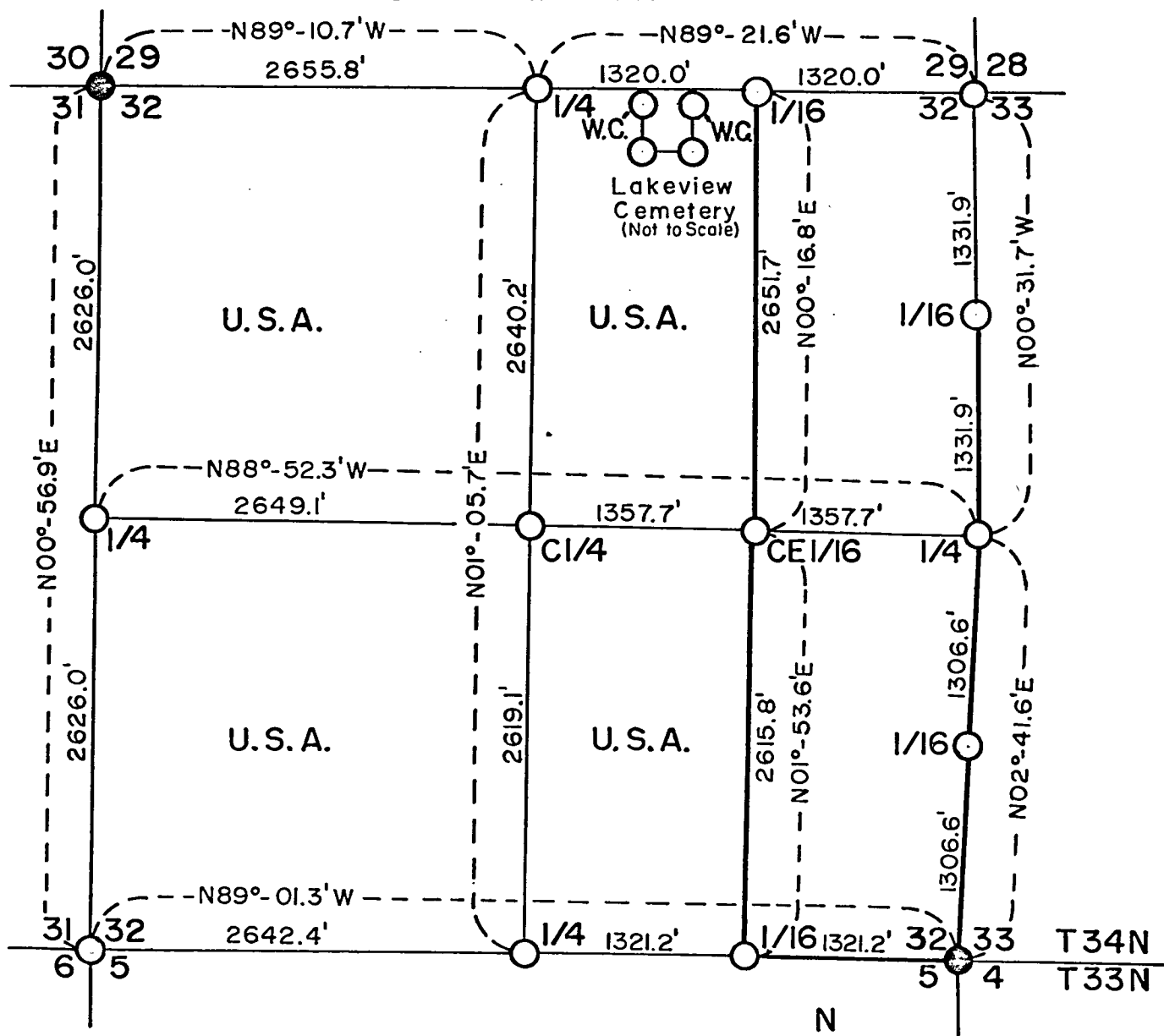
BY

Sheet 1 of 6

# PLAT OF SURVEY U. S. GOVERNMENT LAND

Being W1/2, W1/2NE1/4, and W1/2SE1/4 Section 32  
Township 34 North, Range 15 East, Fourth Principal Meridian  
FOREST COUNTY, WISCONSIN

1000' 0' 1000'  
SCALE IN FEET



## LEGEND



— Monumented corner, certificate on file.



— Corner position marked by a 2 inch inside diameter, 3 foot long, concrete filled, galvanized iron pipe capped with a 3 inch diameter brass tablet marked to identify corner.

— Marked boundary of U.S. Government land.

U.S.A. — U.S. Government land.

W.C. — Witness Corner.

COPY

Sheet 2 of 6

# PLAT OF SURVEY

## U. S. GOVERNMENT LAND

Being W1/2, W1/2 NE1/4 and W1/2 SE1/4 Section 32  
Township 34 North, Range 15 East, Fourth Principal Meridian  
FOREST COUNTY, WISCONSIN

### SURVEY NOTES

This survey was made by the U. S. Department of Agriculture, Forest Service, for the purpose of recovering, restoring, establishing, marking and perpetuating the corners and boundary lines of U. S. Government land on the perimeter and within section 32, township 34 north, range 15 east, fourth principal meridian, Forest County, Wisconsin as shown on the plat map herein.

The original Government subdivision survey of this township was made in 1859. In 1899 the section to the east, section 33, was subdivided for platting the town of Carter, Wisconsin by N. H. Smith. This plat is recorded in Forest County, Crandon, Wisconsin. Evidence from N. H. Smith's survey was used to locate the E. 1/4 and N. 1/16 between sections 32 and 33.

The U. S. Government acquired title to the plat identified Government lands within section 32 during the period 1931-1941, except 2.0 acres in NW 1/4 NE 1/4 for a public cemetery.

The corner positions recovered, restored and established by this survey are monumented by the monuments described in the map legend.

The bearings between corner positions are true bearings as determined by reference to several polaris observations and a solar observation near the northeast corner of section 32. The relative accuracy of the traverse control for corner establishment was one part in 46,000.

The field survey notes and a copy of the plat of survey are on file in the Forest Supervisor's Office at Rhinelander, Wisconsin.

### Corners Recovered and Restored

1. Section Corner to Sections 29-30-31-32, T. 34 N., R. 15 E.  
Corner position recovered and monumented by the Forest Service in 1968. Restoration certificate filed.
2. Section Corner to Sections 4-5-32-33, T. 33-34 N., R. 15 E.  
Corner position recovered and monumented by the Forest Service in 1973. Restoration certificate filed.
3. Section Corner to Sections 28-29-32-33, T. 34 N., R. 15 E.  
Corner position restored at "T" road intersection (north, east and west) and fence line south and recorded distance from N. H. Smith survey of 1899. Monument set 18" below road surface.  
Corner references:

|                       |         |           |
|-----------------------|---------|-----------|
| Bridge #1, B.O.       | N.70°E. | 45.0 feet |
| Basswood 5"           | S.22°E. | 21.1 feet |
| Basswood 9"           | N.62°W. | 74.6 feet |
| Bridge #2, B.O.       |         | 47.9 feet |
| B.O. - Bearing Object | N.12°W. |           |

COPY

Sheet 3 of 6

# PLAT OF SURVEY U. S. GOVERNMENT LAND

Being W1/2, W1/2 NE1/4 and W1/2 SE1/4 Section 32  
Township 34 North, Range 15 East, Fourth Principal Meridian  
FOREST COUNTY, WISCONSIN

4. Section Corner to Section 5-6-31-32, T. 33-34 N., R. 15 E.

Corner position restored at the single proportionate measurement between the southeast corner of section 32 and southwest corner of section 31.

Corner references:

|                |         |           |
|----------------|---------|-----------|
| White Ash 9"   | N.59°E. | 30.5 feet |
| Basswood 8"    | S.70°E. | 27.2 feet |
| Basswood 8"    | S.27°W. | 6.5 feet  |
| Sugar Maple 9" | N.32°W. | 46.2 feet |
| Sign Post      | North   | 1.0 feet  |

5. Quarter Corner to Sections 31-32.

Corner position restored by single proportionate measurement between northwest and southwest corner of section 32.

Corner references:

|                |         |           |
|----------------|---------|-----------|
| Sugar Maple 8" | N.41°E. | 21.9 feet |
| Basswood 8"    | S.45°W. | 21.0 feet |
| Sugar Maple 5" | S.24°E. | 32.3 feet |
| Sign Post      | North   | 1.5 feet  |

6. Quarter Corner to Section 29-32.

Corner position restored by using centerline of Elliot Road for latitude and distance from northeast section corner, east and stream 2.0 chains, west for longitude. This position falls at centerline of the Elliot Road and fence north.

Corner reference:

|                   |         |           |
|-------------------|---------|-----------|
| White Ash 9"      | N. 3°E. | 51.4 feet |
| Twin Rock Elm 11" | S.52°E. | 82.7 feet |
| Sugar Maple 10"   | S.11°W. | 39.5 feet |

7. Quarter Corner to Sections 32-33.

Corner position restored from remains of original bearing tree, remains of fence corner and remains of bearing tree set by N.H. Smith.

Corner references set by Smith, 1899:

|                 |         |          |
|-----------------|---------|----------|
| Sugar Maple 12" | N.25°E. | 45 links |
|-----------------|---------|----------|

Correction noted in distance to Hemlock bearing tree is 22 links.

Corner references:

|                 |         |           |
|-----------------|---------|-----------|
| Sugar Maple 13" | N.74°E. | 34.6 feet |
| Basswood 7"     | S.46°E. | 22.2 feet |
| Hemlock 7"      | N.26°W. | 9.5 feet  |
| Sign Post       | North   | 1.0 feet  |

COPY

Sheet 4 of 6

# PLAT OF SURVEY U. S. GOVERNMENT LAND

Being W1/2, W1/2 NE1/4 and W1/2 SE1/4 Section 32  
Township 34 North, Range 15 East, Fourth Principal Meridian  
FOREST COUNTY, WISCONSIN

8. North Sixteenth Corner to Sections 32-33.

Corner position restored from fence corner and bearing tree remains set by N. H. Smith.

Corner references set by Smith, 1899:

|                 |              |          |
|-----------------|--------------|----------|
| Sugar Maple 13" | N. 8 3/4° W. | 17 links |
| Basswood 20"    | S. 25° W.    | 29 links |

New corner references:

|              |           |           |
|--------------|-----------|-----------|
| Basswood 10" | N. 67° E. | 7.0 feet  |
| Basswood 8"  | S. 32° W. | 19.3 feet |
| Basswood 10" | N. 51° W. | 16.6 feet |
| Sign Post    | North     | 1.5 feet  |

9. Quarter Corner to Sections 5-32, T. 33-34 N., R. 15 E.

Corner position restored by single proportionate measurement midway and on line between the southeast corner and southwest corner of section 32.

Corner references:

|                |           |           |
|----------------|-----------|-----------|
| Sugar Maple 6" | N. 71° E. | 10.2 feet |
| Basswood 7"    | S. 33° E. | 15.4 feet |
| Sugar Maple 8" | N. 58° W. | 34.4 feet |
| Sign Post      | North     | 1.0 feet  |

## CORNERS ESTABLISHED

1. East Sixteenth Corner to Sections 29-32.

Corner position established at midpoint and on line between the north-east corner and north quarter corner of section 32.

Corner references:

|             |           |           |
|-------------|-----------|-----------|
| Basswood 5" | S. 10° E. | 27.7 feet |
| Basswood 7" | N. 1° E.  | 39.4 feet |

2. South Sixteenth Corner to Sections 32-33.

Corner position established at midpoint and on line between the south-east corner and east quarter corner of section 32.

Corner references:

|                |           |           |
|----------------|-----------|-----------|
| Sugar Maple 6" | N. 31° E. | 27.8 feet |
| Sugar Maple 6" | S. 12° E. | 22.9 feet |
| Black Ash 6"   | S. 79° W. | 37.8 feet |
| Sign Post      | North     | 1.0 feet  |

COPY

Sheet 5 of 6

# PLAT OF SURVEY U. S. GOVERNMENT LAND

Being W1/2, W1/2 NE1/4 and W1/2 SE1/4 Section 32  
Township 34 North, Range 15 East, Fourth Principal Meridian  
FOREST COUNTY, WISCONSIN

3. East Sixteenth Corner to Sections 5-32, T. 33-34 N., R. 15 E.

Corner position established at midpoint and on line between the south-east corner and the south quarter corner of section 32.

Corner references:

|                |         |           |
|----------------|---------|-----------|
| Basswood 10"   | N.54°E. | 26.8 feet |
| Sugar Maple 5" | S.22°W. | 15.1 feet |
| Sugar Maple 6" | N.18°W. | 25.5 feet |
| Sign Post      | North   | 1.0 feet  |

4. Center Quarter Corner.

Position established on the intersection of the straight lines between opposing quarter corners on the perimeter of the section.

Corner references:

|              |         |           |
|--------------|---------|-----------|
| Black Ash 7" | N.32°E. | 21.3 feet |
| Red Maple 6" | S.81°W. | 14.7 feet |
| Sign Post    | North   | 1.0 feet  |

5. Center East Sixteenth Corner.

Position established at midpoint and on line between the east quarter corner and the center quarter corner.

|                |         |           |
|----------------|---------|-----------|
| Butternut 10"  | S.56°E. | 13.9 feet |
| Sugar Maple 5" | S.28°W. | 6.6 feet  |
| Sugar Maple 7" | N.42°W. | 23.3 feet |
| Sign Post      | North   | 1.0 feet  |

From the deed description recorded June 9, 1936, Volume 62 Deeds, page 555, Forest County, Wisconsin, an exception of two acres for public cemetery (Lakeview Cemetery) was located in the NW 1/4 NE 1/4 of this section. The southwest and southeast corner positions of this cemetery exception were monumented with a 2" inside diameter by 3' long, concrete filled galvanized iron pipe capped with a 3" brass tablet marked to identify corner. The northwest and northeast corner of this cemetery were not marked, however, a similar monument was placed as a witness corner 33.0 feet south of these corners and marked witness corner to the northeast and northwest corners of this cemetery which are near the Elliot Road centerline on the section line. These corners were not referenced.

# PLAT OF SURVEY U. S. GOVERNMENT LAND

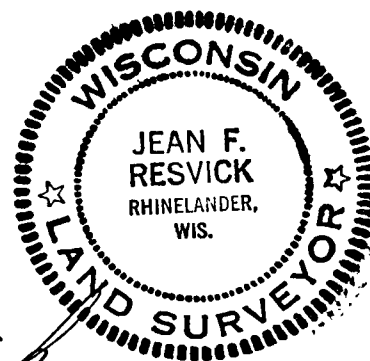
Being W1/2, W1/2 NE1/4 and W1/2 SE1/4 Section 32  
Township 34 North, Range 15 East, Fourth Principal Meridian  
FOREST COUNTY, WISCONSIN

## SURVEYOR'S AFFIDAVIT

I, Jean F. Resvick, Cadastral Surveyor, U. S. Forest Service, and a registered land surveyor in the State of Wisconsin, hereby certify that I have supervised the survey and subdivision of section 32, township 34 north, range 15 east, fourth principal meridian, State of Wisconsin.

The plat and notes herein are a correct representation of the land surveyed and divided. I have reviewed the survey and subdivision of said section in accordance with the rules for the survey of public lands and with the statutes of the State of Wisconsin.

The following U. S. Forest Service personnel, under my supervision, conducted this survey in the following capacities: Milo E. Stefan, Chief of Party; Thomas Tallier, Chainman. Plat by Milo E. Stefan.



*Jean F. Resvick*

Cadastral Surveyor, U. S. Forest Service  
R.L.S. State of Wisconsin  
Certificate S-802

Date of Survey: 1976