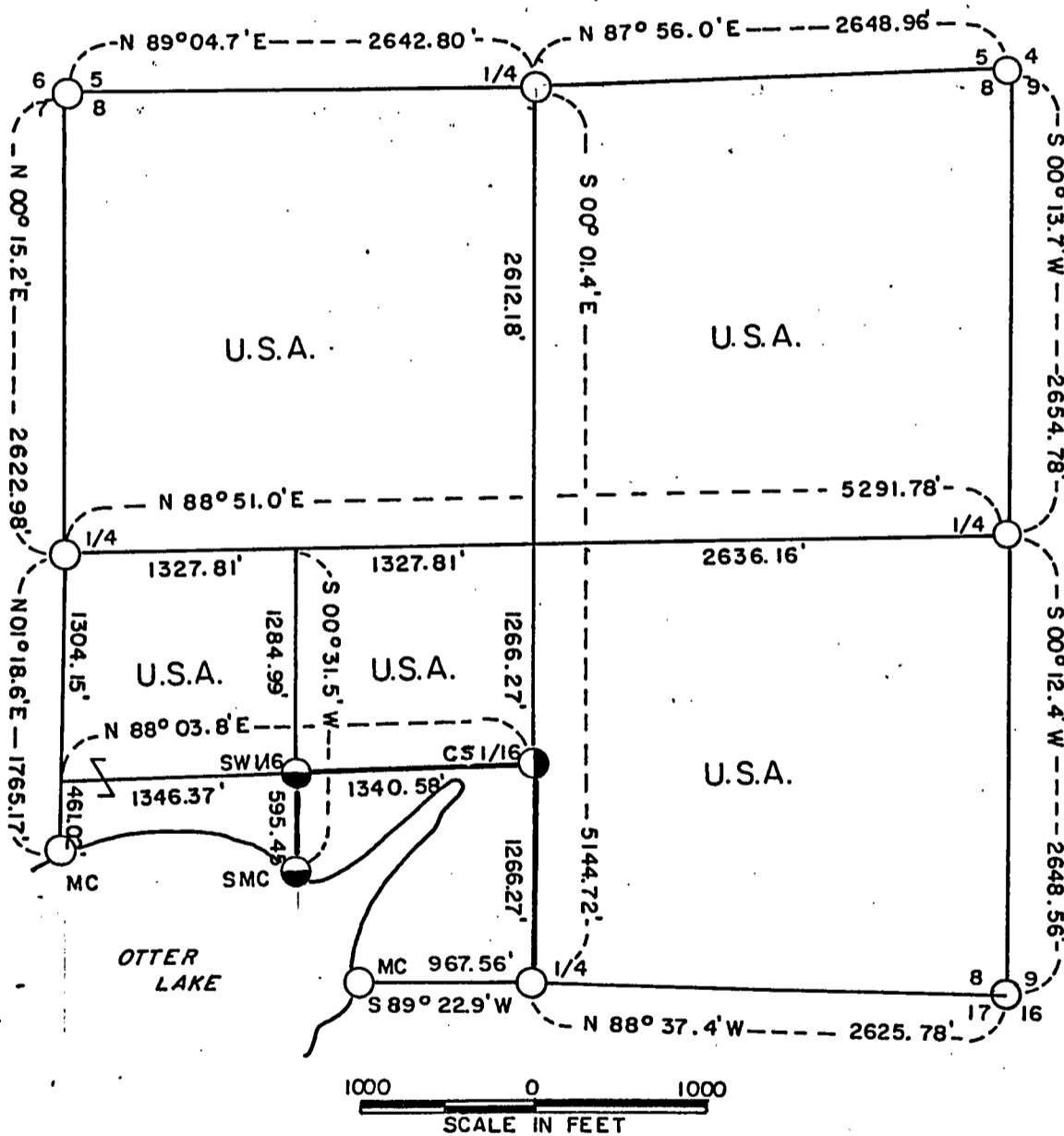


Stock No. 26273

PLAT OF SURVEY U.S. GOVERNMENT LAND

Sheet one of four

BEING THE NW 1/4, THE NE 1/4, THE SE 1/4, THE NE 1/4
 OF THE SW 1/4, AND GOV'T LOT 2 OF SECTION 8,
 TOWNSHIP 34 NORTH, RANGE 16 EAST, 4TH PRINCIPAL MER-
 IDIAN, FOREST COUNTY, WISCONSIN



LEGEND

- Existing U.S. Forest Service Monument
- Set 2" Diameter Aluminum Monument, 36" Long
- Set 2" Diameter Aluminum Monument, 60" Long
- Marked Boundary Lines of U.S. Government Lands

CONVERSION FACTOR:

Feet to Meters = 0.3048
 Meters to Feet = 3.280833

Stock No. 26273

Sheet two of four

SURVEY NOTES

This survey was made by AARON ASSOCIATES of Oconto Falls, Wisconsin under contract with the U.S. Department of Agriculture, Forest Service, using Forest Service section subdivisional data for the purpose of establishing subdivisional corners within Section 8, and for locating and marking the boundaries of U.S. Government lands on their perimeter and within Section 8, Township 34 North, Range 16 East, 4th Principal Meridian, Forest County, Wisconsin.

The U.S. Government lands were acquired in 1934-1935-1936-1982.

The Original Government Survey of this township was made in 1859.

The corner positions recovered, restored and established by this survey are marked with monuments described in the map legend.

The corner positions established by this survey were located to an accuracy of one part in 3000.

The bearings between corner positions are True Bearings as determined by Solar observations.

The field notes of this survey and a copy of the plat map are on file in the Forest Supervisor's Office at Rhinelander, Wisconsin.

CORNERS RECOVERED AND RESTORED1. Section Corner to Sections 5 - 6- 7- 8, T34N, R16E.

Corner position found marked with a Forest Service monument.
Certificate on file in the Forest County courthouse.

2. Section Corner to Sections 4 - 5- 8- 9, T34N, R16E.

Corner position found marked with a Forest Service monument.
Certificate on file in the Forest County courthouse.

3. Section Corner to Sections 8 - 9-16-17, T34N, R16E.

Corner position found marked with a Forest Service monument.
Certificate on file in the Forest County courthouse.

4. Meander Corner to Sections - 8 -17- , T34N, R16E.

Corner position found marked with a Forest Service monument.
Certificate on file in the Forest County courthouse.

5. Quarter Corner to Sections 7 -8 , T34N, R16E.

Corner position found marked with a Forest Service monument.
Certificate on file in the Forest County courthouse.

6. Quarter Corner to Sections 5 -8 , T34N, R16E.

Corner position found marked with a Forest Service monument.
Certificate on file in the Forest County courthouse.

7. Quarter Corner to Sections 8 - 9, T34N, R16E.

Corner position found marked with a Forest Service monument.
Certificate on file in the Forest County courthouse.

Stock No. 26273

Sheet three of four

8. Quarter Corner to Sections 8-17, T34N, R16E.

Corner position found marked with a Forest Service monument.
Certificate on file in the Forest County courthouse.

9. Meander Corner between Sections 7-8, T34N, R16E.

Corner position found marked with a Forest Service monument.
Certificate on file in the Forest County courthouse.

CORNERS ESTABLISHED10. Center-South Sixteenth Corner of Section 8, T34N, R16E.

Set this corner position at midpoint between the south quarter and center quarter corners of Section 8 using Forest Service section data.
Corner references:

Ironwood	4"	S03W	26.30 ft.
Dbl. Sugar	6"	S70W	11.93 ft.
Red Maple	12"	N19W	11.55 ft.
Sign Post		West	1.12 ft.

11. Southwest Sixteenth Corner of Section 8, T34N, R16E.

Corner position was set at the straight line intersection of sixteenth lines in the southwest quarter of Section 8 according to Forest Service data.

Corner references:

White Pine	7"	N66E	46.15 ft.
White Pine	10"	S35E	28.62 ft.
White Pine	10"	N46W	28.44 ft.
Sign Post		East	1 foot

12. Special Meander Corner of Section 8, T34N, R16E.

Corner position was set at point where the north-south sixteenth line in the southwest quarter of Section 8 intersected the north shore of Otter Lake.

Corner references:

White Pine	22"	N86W	16.48 ft.
Cedar	8"	S62E	20.83 ft.
Lake		South	28 feet
Sign Post		South	0.60 ft.

Stock No. 26273

Sheet four of four

SURVEYOR'S AFFIDAVIT

STATE OF WISCONSIN)
COUNTY OF FOREST)SS

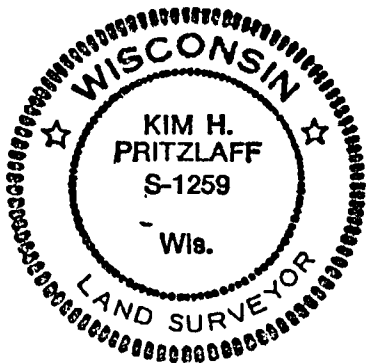
I, Kim H Pritzlaff, Registered Land Surveyor in the State of Wisconsin hereby certify: that I have surveyed and subdivided Section 8, Township 34 North, Range 16 East, 4th Principal Meridian, Forest County, Wisconsin.

That the Plat map and notes herewith are a true and correct representation of the land surveyed and subdivided using Forest Service section dimensions and data and that I have surveyed and subdivided said Section 8 in accordance with the rules of survey of the public lands and with the Statutes of the State of Wisconsin.

Date of Survey: 1986.

Kim H. Pritzlaff

Kim H Pritzlaff, RLS No. 1259
AARON ASSOCIATES
Oconto Falls, Wisconsin



Dale B. Stargel

Plat ready for filing

District Ranger

