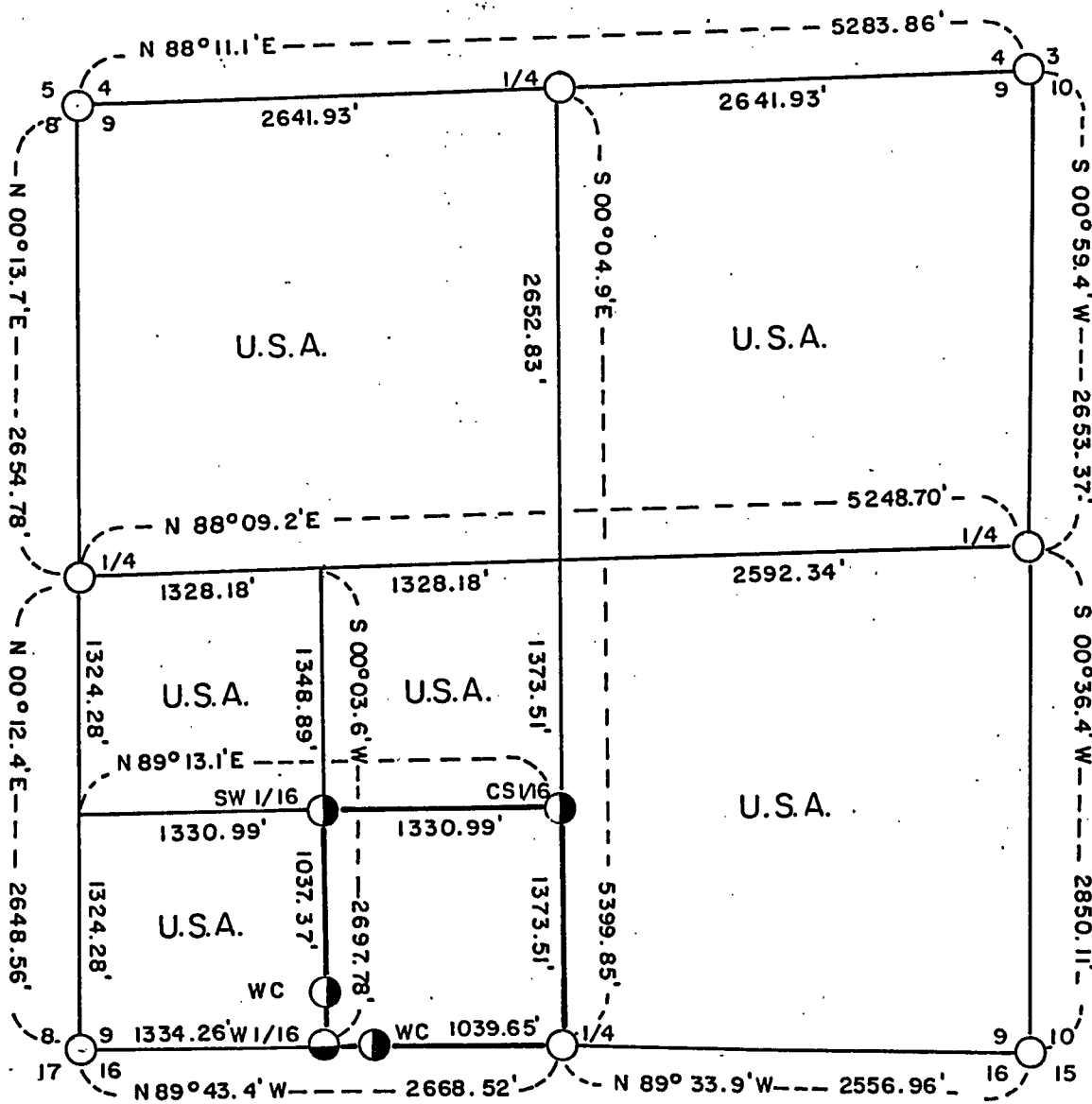


PLAT OF SURVEY U.S. GOVERNMENT LAND

BEING THE NW 1/4, THE NE 1/4, THE SE 1/4, THE N 1/2 OF THE SW 1/4, AND THE SW 1/4 OF THE SW 1/4 OF SECTION 9, TOWNSHIP 34 NORTH, RANGE 16 EAST, 4TH PRINCIPAL MERIDIAN, FOREST COUNTY, WISCONSIN



LEGEND

- Existing U.S. Forest Service Monuments
- Set 2" Diameter Aluminum Monument, 36" Long
- Set 2" Diameter Aluminum Monument, 60" Long
- Marked Boundary Lines of U.S. Government Land

CONVERSION FACTOR:

Feet to Meters = 0.30480
 Meters to Feet = 3.280833

Stock No. 26273

Sheet two of four

SURVEY NOTES

This survey was made by AARON ASSOCIATES of Oconto Falls, Wisconsin under contract with the U.S. Department of Agriculture, Forest Service using Forest Service section data for the purpose of establishing subdivisional corners within Section 9, and for locating and marking the boundaries of U.S. Government Lands on their perimeter and within Section 9, Township 34 North, Range 16 East, 4th Principal Meridian, Forest County, Wisconsin.

The U.S. Government Lands were acquired in 1934 and 1935.

The Original Government Survey of this Township was made in 1859.

The corner positions recovered, restored and established by this survey are marked by monuments described in the map legend.

The corner positions established by this survey were located to an accuracy of one part in 3000.

The bearings between corner positions are True Bearings as determined by solar observations.

The field notes and a copy of the plat map are on file in the Forest Supervisor's Office at Rhinelander, Wisconsin.

CORNERS RECOVERED AND RESTORED1. Section Corner to Sections 4-5-8-9, T34N, R16E.

Corner position found marked with a Forest Service monument. Certificate on file in the Forest County courthouse.

2. Section Corner to Sections 3-4-9-10, T34N, R16E.

Corner position found marked with a Forest Service monument. Certificate on file in the Forest County courthouse.

3. Section Corner to Sections 9-10-15-16, T34N, R16E,

Corner position found marked with a Forest Service monument. Certificate on file in the Forest County courthouse.

4. Section Corner to Sections 8-9-16-17, T34N, R16E.

Corner position found marked with a Forest Service monument. Certificate on file in the Forest County courthouse.

5. Quarter Corner to Sections 4-9, T34N, R16E.

Corner position found marked with a Forest Service monument. Certificate on file in the Forest County courthouse.

6. Quarter Corner to Sections 9-10, T34N, R16E.

Corner position found marked with a Forest Service monument. Certificate on file in the Forest County courthouse.

7. Quarter Corner to Sections 9-16, T34N, R16E.

Corner position found marked with a Forest Service monument. Certificate on file in the Forest County courthouse.

Stock No. 26273

Sheet three of four

8. Quarter Corner to Sections 8-9, T34N, R16E.

Corner position found marked with a Forest Service monument.
Certificate on file in the Forest County courthouse.

CORNERS ESTABLISHED9. Center-South Sixteenth Corner of Sections 9, T34N, R16E.

Set this corner position at midpoint between the south and center quarter corners of Section 9 according to Forest Service section data.
Corner references:

Popple	10"	S08W	14.14 ft.
Popple	8"	N67W	15.22 ft.
Popple	5"	N19W	6.89 ft.
Sign Post		South	0.94 ft.

10. Southwest Sixteenth Corner of Section 9, T34N, R16E.

Set this corner position at the straight line intersection point of sixteenth lines in the southwest quarter of Section 9 according to Forest Service section data.
Corner references:

Elm	8"	N85E	44.05 ft.
Spruce	8"	S64W	22.24 ft.
Popple	8"	N39W	17.96 ft.
Sign Post		South	0.80 ft.

11. West Sixteenth Corner Between Sections 9-16, T34N, R16E.

Set this corner position at midpoint on south line of Section 9 between the southwest and south quarter corners of said Section 9 using Forest Service section data. Corner fell in river and two Witness Corners were set, one north and the other to the east.

Corner references:

Witness Corner north 311.52 ft.:

Ash	9"	S14E	76.93 ft.
Sign Post		North	3.56 ft.
Sign Post		South	20.47 ft.

Corner post was set in north edge of gravel road, 6" under surface

Witness Corner east 294.61 ft.:

Popple	4"	N14E	14.80 ft.
Popple	7"	S47E	18.71 ft.
Tamarack	12"	N82W	60.20 ft.
Sign Post		East	1.90 ft.

A 60" Aluminum Post was set in the river with a Sign Post North 1.ft.

Stock No. 26273

Sheet four of four

SURVEYOR'S AFFIDAVIT

STATE OF WISCONSIN)
COUNTY OF FOREST)SS

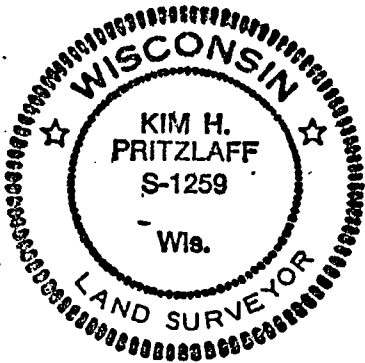
I, Kim H Pritzlaff, Registered Land Surveyor in the State of Wisconsin hereby certify: That I have surveyed and subdivided Section 9, Township 34 North, Range 16 East, 4th Principal Meridian, Forest County, Wisconsin.

That the Plat map and notes herewith are a true and correct representation of the land surveyed and subdivided using Forest Service section data and information and that I have surveyed and subdivided said Section 9 in accordance with the rules of survey of the public lands and with the Statutes of the State of Wisconsin.

Date of Survey: 1986.

Kim H. Pritzlaff

Kim H Pritzlaff, RLS No. 1259
AARON ASSOCIATES
Oconto Falls, Wisconsin



Plat ready for filing

Dale B. Staege
District Ranger

