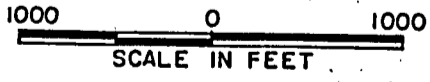
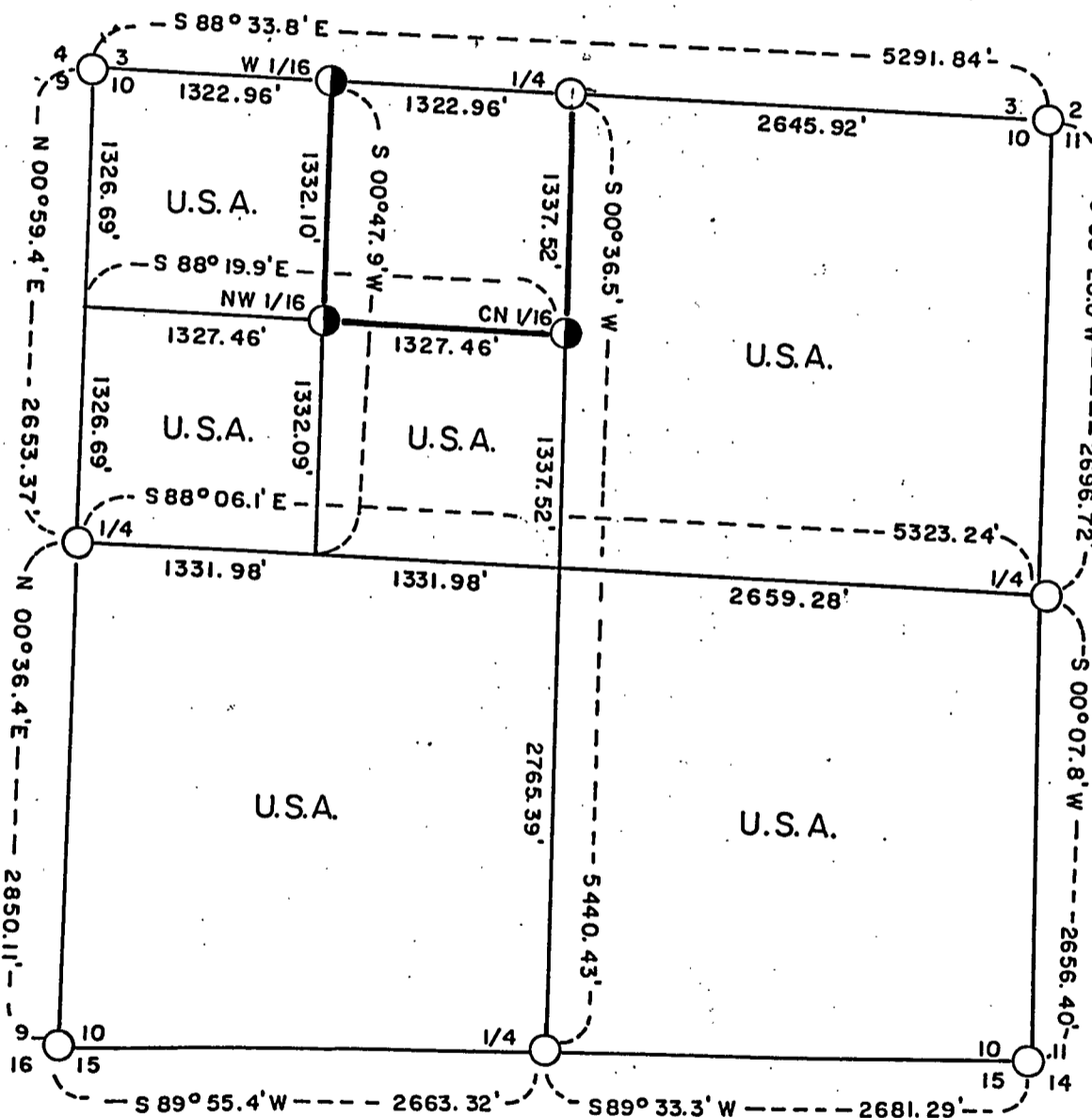


PLAT OF SURVEY U.S. GOVERNMENT LAND

BEING THE NE 1/4, THE SE 1/4, THE SW 1/4, THE NW 1/4 OF THE NW 1/4, AND THE S 1/2 OF THE NW 1/4 OF SECTION 10, TOWNSHIP 34 NORTH, RANGE 16 EAST, 4TH PRINCIPAL MERIDIAN, FOREST COUNTY, WISCONSIN



LEGEND

○ Existing U.S. Forest Service Monument

● Set 2" Diameter Aluminum Monument, 36" Long

Marked Boundary Lines of U.S. Government Lands

CONVERSION FACTOR:

Feet to Meters = 0.30480
Meters to Feet = 3.280833

Stock No. 26273

Sheet two of three

SURVEY NOTES

This survey was made by AARON ASSOCIATES of Oconto Falls, Wisconsin under contract with the U.S. Department of Agriculture, Forest Service, using Forest Service section subdivisional data for the purpose of establishing subdivisional corners within Section 10, and for locating and marking the boundaries of U.S. Government lands on their perimeter and within Section 10, Township 34 North, Range 16 East, 4th Principal Meridian, Forest County, Wisconsin.

The U.S. Government lands were acquired in 1934, 1935, & 1936

The Original Government Survey of this township was made in 1859.

The corner positions recovered, restored and established by this survey are marked with monuments described in the map legend.

The corner positions established by this survey were located to an accuracy of one part in 3000.

The bearings between corner positions are True Bearings as determined by Solar observations.

The field notes of this survey and a copy of the plat map are on file in the Forest Supervisor's Office at Rhinelander, Wisconsin.

CORNERS RECOVERED AND RESTORED1. Section Corner to Sections 3 -4 -9 -10, T34N, R16E.

Corner position found marked with a Forest Service monument. Certificate on file in the Forest County courthouse.

2. Section Corner to Sections 2 -3 -10-11, T34N, R16E.

Corner position found marked with a Forest Service monument. Certificate on file in the Forest County courthouse.

3. Section Corner to Sections 10-11-14-15, T34N, R16E.

Corner position found marked with a Forest Service monument. Certificate on file in the Forest County courthouse.

4. Section Corner to Sections 9 -10-15-16, T34N, R16E.

Corner position found marked with a Forest Service monument. Certificate on file in the Forest County courthouse.

5. Quarter Corner to Sections 3 -10, T34N, R16E.

Corner position found marked with a Forest Service monument. Certificate on file in the Forest County courthouse.

6. Quarter Corner to Sections 10-11, T34N, R16E.

Corner position found marked with a Forest Service monument. Certificate on file in the Forest County courthouse.

7. Quarter Corner to Sections 10-15, T34N, R16E.

Corner position found marked with a Forest Service monument. Certificate on file in the Forest County courthouse.

Stock No. 26273

Sheet three of three

8. Quarter Corner to Sections 9-10, T34N, R16E.

Corner Position marked by a Forest Service monument. Certificate on file in the Forest County courthouse.

CORNERS ESTABLISHED9. Center-North Sixteenth Corner to Section 10, T34N, R16E.

Corner position set at midpoint between the north and center quarter corners of Section 10 according to Forest Service section data.

Corner references:

Sugar	5"	N16W	3.07 ft.
Sugar	9"	N78E	20.96 ft.
Db1. Sugar	4"	S40W	18.75 ft.
Sign Post		West	0.60 ft.

10. Northwest Sixteenth Corner of Section 10, T34N, R16E.

Corner position set at the intersection of sixteenth lines in the northwest quarter of Section 10 according to Forest Service data.

Corner references:

Red Maple	5"	N36E	34.53 ft.
Red Maple	9"	N02W	51.31 ft.
Balsam Fir	8"	S62E	35.16 ft.
Sign Post		East	0.71 ft.

11. West Sixteenth Corner to Sections 3-10, T34N, R16E.

Corner position set at midpoint between the northwest and north quarter corners of Section 10 according to Forest Service data.

Corner references:

Popple	9"	N73E	20.75 ft.
Popple	9"	N02E	18.46 ft.
Popple	9"	N54W	13.82 ft.
Sign Post		South	0.68 ft.

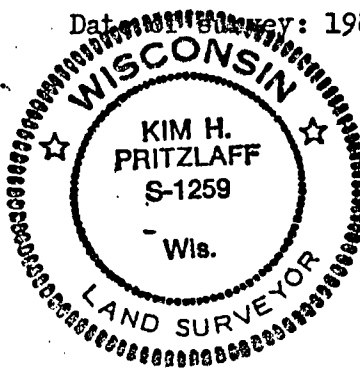
SURVEYOR'S AFFIDAVIT

STATE OF WISCONSIN)
COUNTY OF FOREST)SS

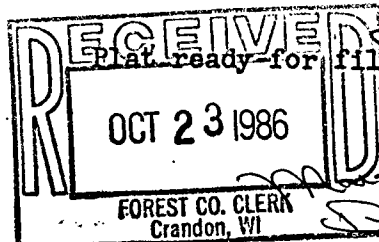
I, Kim H Pritzlaff, Registered Land Surveyor in the State of Wisconsin hereby certify: that I have surveyed and subdivided Section 10, Township 34 North, Range 16 East, 4th Principal Meridian, Forest County, Wisconsin.

That the Plat map and notes herewith are a true and correct representation of the land surveyed and subdivided using Forest Service section data and that I have surveyed and subdivided said Section 10 in accordance with the rules of survey of the public lands and with the Statutes of the State of Wisconsin.

Date of Survey: 1986.



Kim H. Pritzlaff
Kim H Pritzlaff, RLS No. 1259
AARON ASSOCIATES
Oconto Falls, Wisconsin



Paul B. Steeg
District Ranger