

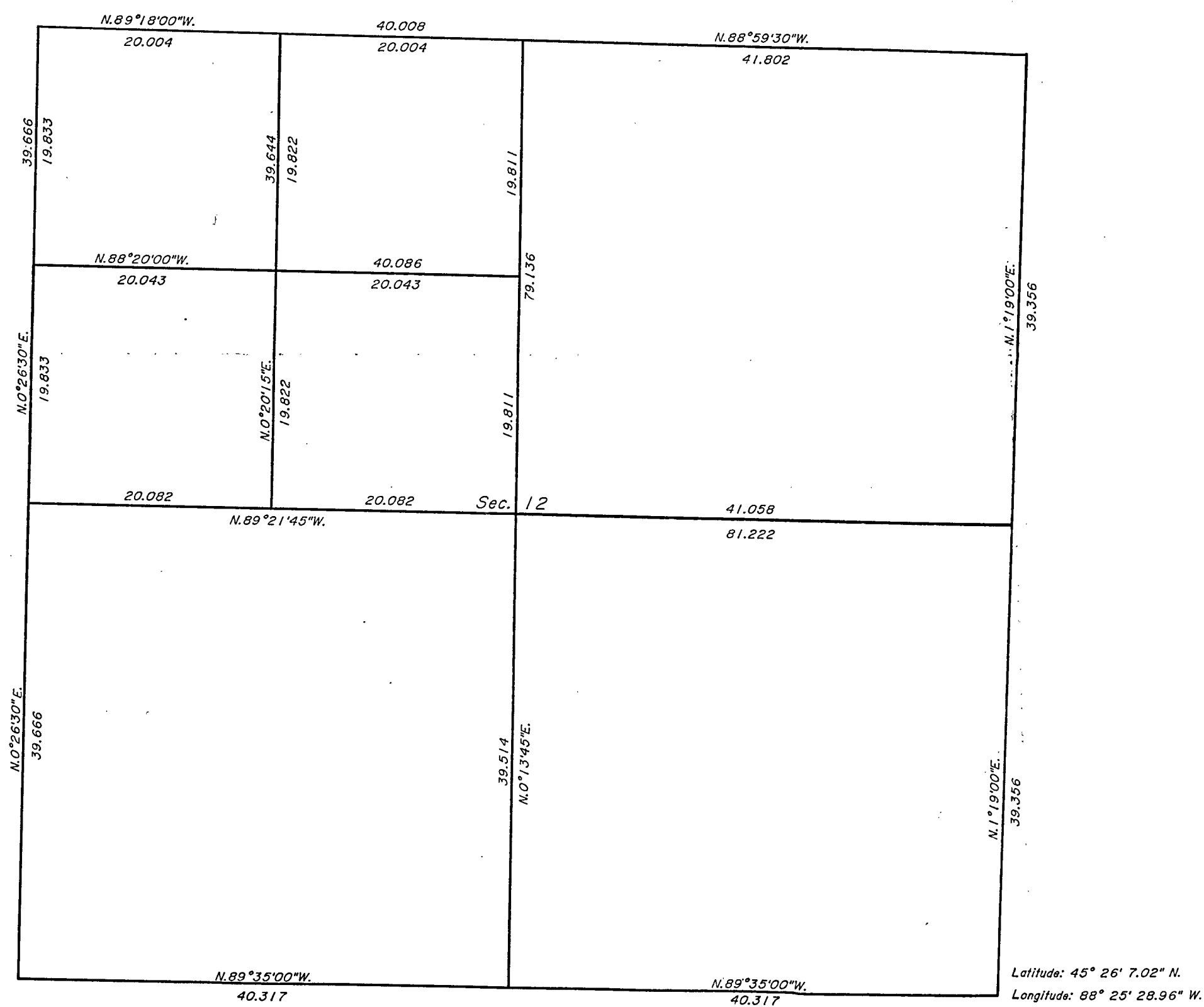
# TOWNSHIP 34 NORTH, RANGE 16 EAST, OF THE FOURTH PRINCIPAL MERIDIAN, WISCONSIN. CORRECTIVE DEPENDENT RESURVEY AND SUBDIVISION

A history of surveys is contained in the field note record.

This plat represents the corrective dependent resurvey of a portion of the east boundary, a portion of the subdivisional lines designed to restore the corners in their true original locations according to the best available evidence, and a subdivision of section 12, T. 34 N., R. 16 E., Fourth Principal Meridian, Wisconsin.

The lottings and areas are as shown on the plat approved September 10, 1858.

Survey executed by Corwyn James Rodine, Cadastral Surveyor, beginning November 15, 1984, and completed November 19, 1984, pursuant to Supplemental Special Instructions for Group No. 125, Wisconsin, dated November 14, 1984.



Latitude: 45° 26' 7.02" N.  
Longitude: 88° 25' 28.96" W.

UNITED STATES DEPARTMENT OF THE INTERIOR  
BUREAU OF LAND MANAGEMENT  
Alexandria, Virginia January 14, 1985

This plat is strictly conformable to the approved field notes, and the survey, having been correctly executed in accordance with the requirements of law and the regulations of this Bureau, is hereby accepted.

For the Director

*Sam J. Bowman*

Chief Cadastral Surveyor  
Eastern States Office

