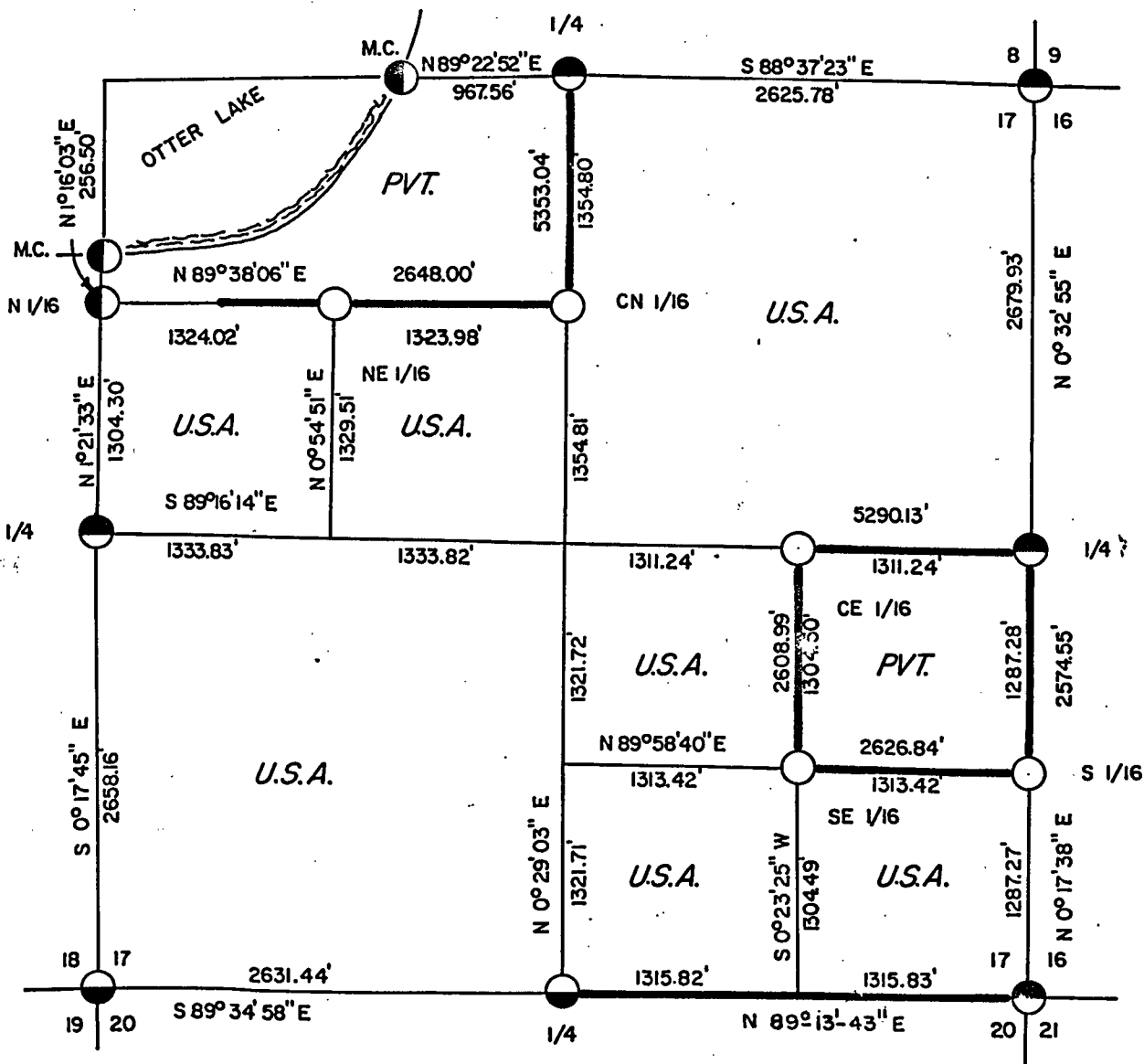
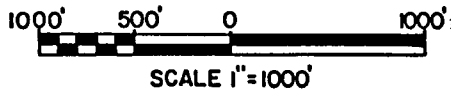


PLAT OF SURVEY U.S. GOVERNMENT LAND

BEING THE NE 1/4, THE SW 1/4, THE S 1/2 OF THE NW 1/4, THE NW 1/4 OF THE SE 1/4, THE SW 1/4 OF THE SE 1/4 AND THE SE 1/4 OF THE SE 1/4, SECTION 17, T 34 N, R 16 E, FOURTH PRINCIPAL MERIDIAN, FOREST COUNTY, WISCONSIN.



Conversion Factors:
 Feet to Meters- 0.304801
 Meters to Feet- 3.280833

LEGEND



- 2"x36" aluminum pipe with 3" aluminum tablet.
- ◐ 2"x60" aluminum pipe with 3" aluminum tablet.
- ◑ 2"x30" aluminum pipe with 3" aluminum tablet.
- 2"x30" aluminum pipe with 3" aluminum tablet set this survey.



Boundary U.S. Government Land, marked and posted to U.S.F.S. standards.

M.C. Meander Corner.

Stock No. 26273

SURVEY NOTES

This survey was made by Robinson & Associates, Inc. pursuant to United States Department of Agriculture, Forest Service Contract #53-56A6-5-00095, True Line Survey for the purpose of marking and perpetuating the exterior and interior boundary lines of the U.S. Government land on the perimeter and within Section 17, T34N, R16E, Forest County, Wisconsin as shown on the plat herewith.

The U.S. Government lands in this section were acquired in 1934 and 1938.

The original Government subdivision survey of this township was made in 1857.

The corner positions recovered, restored, and established by this survey are marked by the monument described in the map legend.

The corner positions established were located to an accuracy of one part in 3000.

The bearings between corner positions are true bearings as determined by solar observations.

The field notes of this survey and a copy of this plat are on file in the Forest Supervisor's Office in Rhinelander, Wisconsin.

CORNERS RECOVERED

1. Section Corner to Sections 17, 18, 19 and 20, T34N, R16E
Document #127294 in Forest County Register of Deeds.
2. Section Corner to Sections 17, 16, 20 and 21, T34N, R16E
Document #127296 in Forest County Register of Deeds.
3. Section Corner to Sections 8, 9, 16 and 17, T34N, R16E
Document #127276 in Forest County Register of Deeds.
4. Meander Corner to Section Corner to Sections 7, 8, 17 and 18, T34N, R16E
Document #127283 in Forest County Register of Deeds.
5. Meander Corner to Section Corner to Sections 7, 8, 17 and 18, T34N, R16E
6. Quarter Corner to Sections 8 and 17, T34N, R16E
Document #127275 in Forest County Register of Deeds.
7. Quarter Corner to Sections 17 and 18, T34N, R16E
Document #127285 in Forest County Register of Deeds.
8. Quarter Corner to Sections 17 and 20, T34N, R16E
Document #127295 in Forest County Register of Deeds.
9. Quarter Corner to Sections 16 and 17, T34N, R16E
Document #127286 in Forest County Register of Deeds.

Stock No. 26273

CORNERS ESTABLISHED

1. Center-North One-Sixteenth Corner to Section 17, T34N, R16E
 Corner established at the midpoint and on line between the North one-quarter and the Center one-quarter corners of Section 17.
 Corner References:

White Spruce	9"	N33°W	39.05 feet
Elm	9"	S56°E	26.74 feet
Iron Rod(erroneous)	1"	S53°W	7.74 feet
Steel Sign Post		West	2.00 feet

2. North-West One-Sixteenth Corner to Section 17, T34N, R16E
 Corner established at the intersection of the North and West one-sixteenth lines of Section 17.
 Corner References:

White Birch	15"	S59°E	15.62 feet
Sugar Maple	5"	S75°W	23.03 feet
Iron Pipe(erroneous)	1½"	S58°W	12.80 feet
Iron Rod(erroneous)	1"	N16°W	27.35 feet
Steel Sign Post		East	1.50 feet

3. Center-East One-Sixteenth Corner to Section 17, T34N, R16E
 Corner established at midpoint and on line between the East one-quarter and the Center one-quarter corners of Section 17.
 Corner References:

Aspen	5"	S37°W	3.62 feet
Elm	7"	N16°W	15.15 feet
Iron Pipe	2"	N11°W	26.93 feet
Steel Sign Post		East	1.30 feet

4. South-East One-Sixteenth Corner to Section 17, T34N, R16E
 Corner established at intersections of the East and South one-sixteenth lines of Section 17.
 Corner References:

White Birch(triple)	6"	N20°W	37.45 feet
Sugar Maple	5"	N35°E	24.38 feet
Iron Pipe	2"	N15°W	54.30 feet
Steel Sign Post		East	1.50 feet

5. South One-Sixteenth Corner to Section 17, T34N, R16E
 Corner established at the midpoint and on line between the East one-quarter and the Southeast Section corners of Section 17.
 Corner References:

Aspen	7"	S35°W	21.04 feet
Tamarack	4"	S84°E	23.93 feet
Iron Pipe	2"	NE	2.50 feet
Steel Sign Post		West	1.50 feet

Stock No. 26273

SURVEYOR'S AFFIDAVIT

State of Wisconsin }
County of Forest } ss

I, Robert H. Winat, registered land surveyor in the State of Wisconsin, hereby certify that I have run the boundary lines shown hereon and set the established corners in Section 17, Township 34 North, Range 16 East, Fourth Principal Meridian, Forest County, State of Wisconsin.

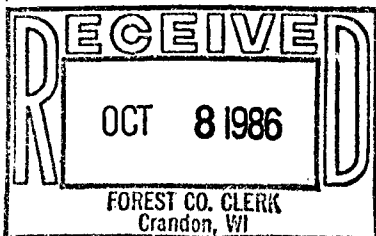
The plat map and the notes herewith are a correct representation of the land which was subdivided by the U.S. Forest Service Surveyor based on traverse work by a separate previous contract. The controlling corners were set and certified to by the U.S. Forest Service Surveyor. I have surveyed said boundary and set said established corners in accordance with the rules for survey of the public lands and with the statutes of the State of Wisconsin.



Robert H. Winat
Robert H. Winat
R.L.S. State of Wisconsin
Certificate S-1040

Date of Survey: 1985

Plat ready for filing *Dale S. Staeger*
District Ranger



Dora C. James