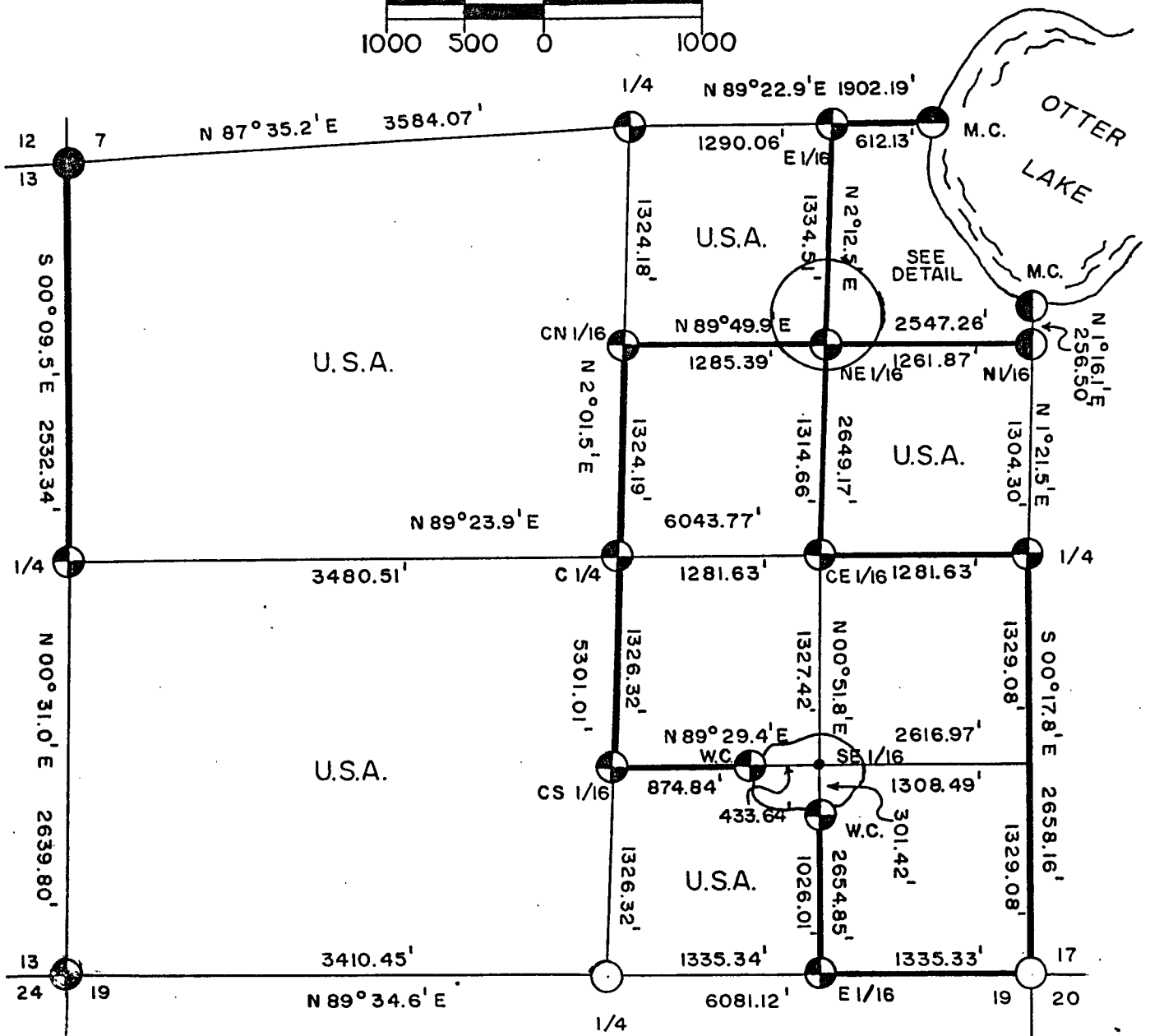
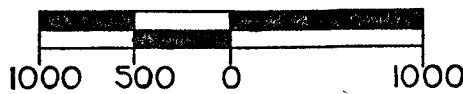


PLAT OF SURVEY U.S. GOVERNMENT LANDS

BEING THE SE 1/4 AND NW 1/4, NE 1/4; SW 1/4, SE 1/4; AND W 1/2, SECTION 18,
TOWNSHIP 34 NORTH, RANGE 16 EAST, FOURTH PRINCIPAL MERIDIAN
FOREST COUNTY WISCONSIN.

SCALE



LEGEND

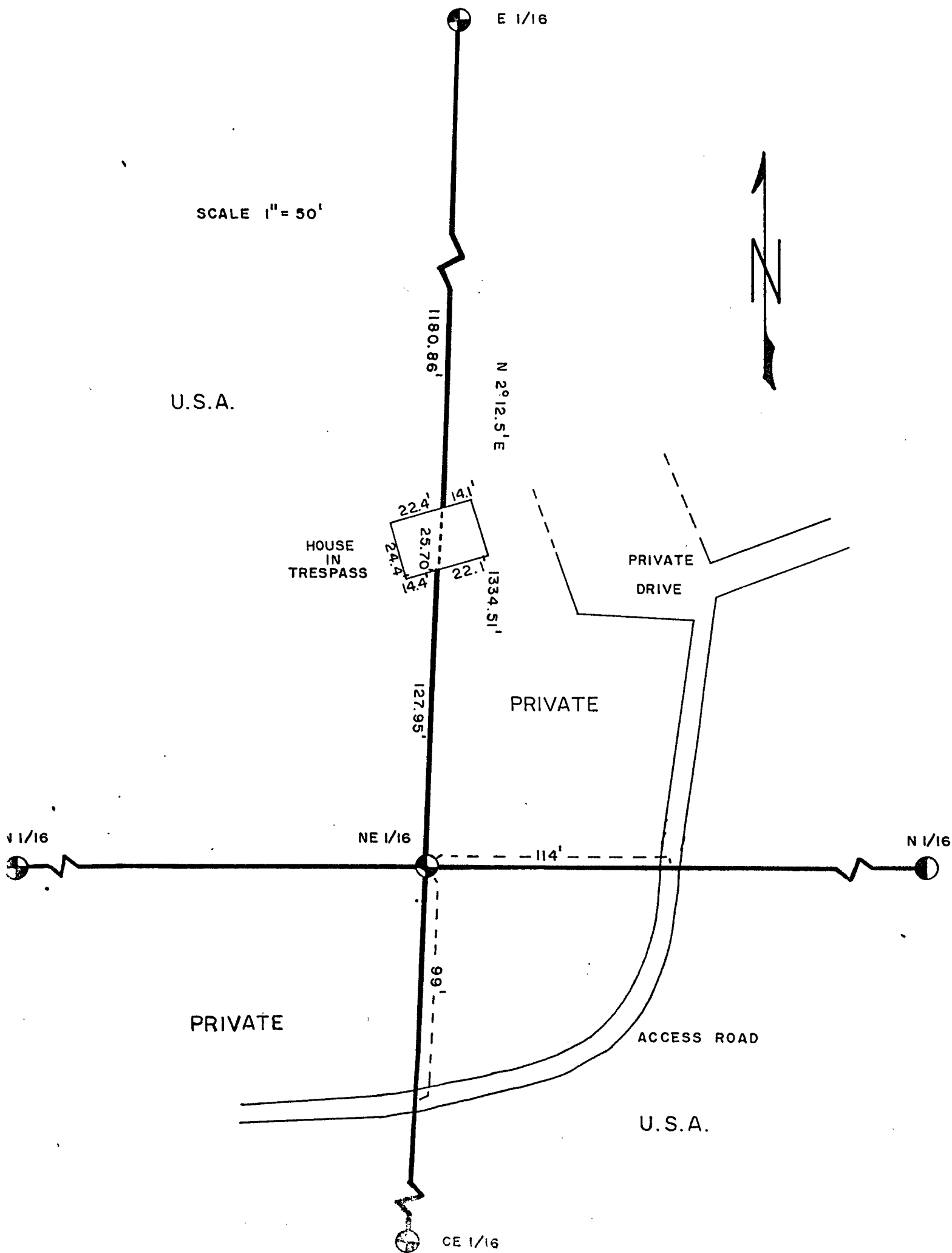
- 2" ALUMINUM MONUMENT, 30" LONG
- 2" ALUMINUM MONUMENT, 36" LONG
- 2" ALUMINUM MONUMENT, 60" LONG
- 2" ALUMINUM MONUMENT, 120" LONG
- R.R. SPIKE IN ROAD CENTERLINE
- MARKED BOUNDARY LINE U.S.A. LANDS

CONVERSION FACTOR
FEET TO METERS - 0.304801
METERS TO FEET - 3.280833

DETAIL

SCALE 1" = 50'

U.S.A.



Stock No. 26273

Sheet 3 of 5

SURVEY NOTES

This survey was made by the U. S. Department of Agriculture, Forest Service, for the purpose of restoring and establishing corners on the perimeter of Section 18, for establishing subdivisional corners within Section 18, and for locating and marking the boundaries of U. S. Government land on their perimeter and within Section 18, Township 34 North, Range 16 East, Fourth Principal Meridian, Forest County, Wisconsin.

The U. S. Government lands in this section were acquired in 1934, 1936, and 1939.

The original Government subdivision survey of this township was made in 1858.

The corner positions recovered, restored, and established by this survey are marked by the monument described in the map legend.

The corner positions established were located to an accuracy of one part in 3000.

The bearings between corner positions are true bearings as determined by solar observations.

The field notes of this survey and a copy of this plat are on file in the Forest Supervisor's Office at Rhinelander, Wisconsin.

CORNERS RECOVERED AND RESTORED

1. Corner to Sections 7, 18, 12, and 13.
Certificate on file--Document Number 127273.
2. Corner to Sections 18, 19, 13, and 24.
Certificate on file--Document Number 127292.
3. Corner to Sections 17, 18, 19, and 20.
Certificate on file--Document Number 127294.
4. Quarter Corner to Sections 7 and 18.
Certificate on file--Document Number 127274.
5. Quarter Corner to Sections 18 and 13.
Certificate on file--Document Number 127284.
6. Quarter Corner to Sections 18 and 19.
Certificate on file--Document Number 127293.
7. Quarter Corner to Sections 17 and 18.
Certificate on file--Document Number 127285.
8. Meander Corner South Side Otter Lake.
Certificate on file--Document Number 127283.
9. Meander Corner West Side Otter Lake.
Corner restored by single proportion between north quarter corners of 17 and 18.
Corner References:

Tamarack	6"	S.16°W.	16.29 feet
B. Spruce	5"	S.88°W.	5.24 feet
Tamarack	2"	N.8°W.	19.21 feet
Steel Sign Post		East	1.50 feet

Stock No. 26273

Sheet 4 of 5

10. North One-Sixteenth to Sections 17 and 18.

Corner recovered as 1½" iron pipe set by P. Smith, R. L. S., for survey in Section 17.

Corner References:

Cedar	8"	N.64°E.	18.13 feet
Cedar	8"	S.31°E.	47.18 feet
B. Spruce	8"	N.3°W.	12.17 feet
Steel Sign Post		West	1.40 feet

CORNERS ESTABLISHED1. Center Quarter Corner to Section 18.

Corner established at the intersection of the one-quarter lines to Section 18.

Corner References:

Sugar	7"	N.81°E.	72.84 feet
Basswood	9"	S.11°W.	10.72 feet
Sugar	11"	N.73°W.	23.91 feet
Steel Sign Post		North	1.12 feet

2. East One-Sixteenth to Sections 7 and 18.

Corner established proportionally and on line between the west meander corner and the north quarter corner of Section 18.

Corner References:

Balsam	15"	S.67°E.	47.42 feet
Sugar	8"	S.62°W.	37.37 feet
Ironwood	3"	N.50°W.	6.60 feet
Steel Sign Post		East	1.00 feet

3. East One-Sixteenth to Sections 18 and 19.

Corner established midpoint and on line between the southeast corner and the south quarter corner of Section 18.

Corner References:

Aspen	5"	N.60°E.	21.86 feet
Sugar	24"	S.71°W.	46.19 feet
Sugar	12"	N.59°W.	50.15 feet
Steel Sign Post		North	1.30 feet

4. Center North One-Sixteenth to Section 18.

Corner established midpoint and on line between the center quarter corner and the north quarter corner of Section 18.

Corner References:

Sugar	8"	S.85°E.	35.24 feet
Sugar	5"	S.59°W.	15.04 feet
Sugar	6"	N.67°W.	24.27 feet
Steel Sign Post		South	1.38 feet

5. Center East One-Sixteenth to Section 18.

Corner established midpoint and on line between the center quarter corner and the east quarter corner of Section 18.

Corner References:

B. Cherry	5"	N.23°E.	40.73 feet
Aspen	10"	S.72°E.	4.38 feet
R. Pine	10"	N.61°W.	73.54 feet
Steel Sign Post		North	0.93 feet

Stock No. 26273

Sheet 5 of 5

6. Center South One-Sixteenth to Section 18.

Corner established midpoint and on line between the center quarter corner and the south quarter corner of Section 18.

Corner References:

Sugar	7"	N.34°E.	39.01 feet
Y. Birch	8"	S.2°E.	18.01 feet
Y. Birch	7"	S.63°W.	18.12 feet
Steel Sign Post		North	1.30 feet

7. Northeast One-Sixteenth to Section 18.

Corner established at the intersection of the north and east one-sixteenth lines of Section 18.

Corner References:

Scotch Pine	6"	S.76°E.	29.86 feet
R. Pine	10"	S.5°E.	63.79 feet
Tamarack	7"	N.8°W.	26.75 feet
Steel Sign Post		South	2.00 feet

8. Witness Corner to Southeast One-Sixteenth Corner of Section 18.

Corner established on south one-sixteenth line of Section 18, 433.6 feet west of southeast one-sixteenth corner, which falls in a pond.

Corner References:

Basswood	6"	S.47°W.	69.54 feet
B. Cherry	6"	N.51°W.	60.79 feet
Aspen	3"	N.9°W.	79.17 feet
Steel Sign Post		West	0.70 feet

9. Witness Corner to Southeast One-Sixteenth Corner of Section 18.

Corner established on east one-sixteenth of Section 18, 301.4 feet south of southeast one-sixteenth corner, which falls in a pond.

Corner References:

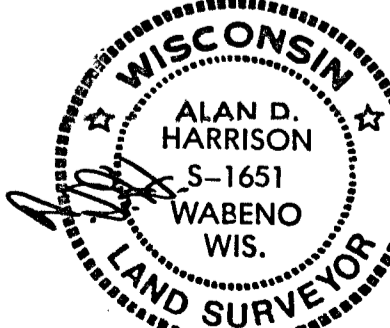
W. Spruce	4"	East	13.68 feet
W. Spruce	5"	S.24°E.	16.80 feet
Aspen	6"	N.55°W.	24.75 feet
Steel Sign Post		North	1.04 feet

SURVEYOR'S AFFIDAVIT

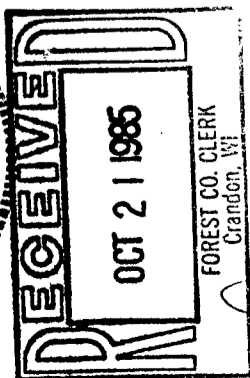
State of Wisconsin]
County of Forest] SS

I, Alan D. Harrison, Cadastral Surveyor, U. S. Forest Service and a registered surveyor in the State of Wisconsin, hereby certify that I have surveyed and subdivided Section 18, Township 34 North, Range 16 East, Fourth Principal Meridian, State of Wisconsin.

The plat map and the notes herewith are a correct representation of the land surveyed and divided. I have surveyed and subdivided said section in accordance with the rules for survey of the public lands and with the statutes of the State of Wisconsin.



Date of Survey: 1985



Alan D. Harrison
Cadastral Surveyor, U. S. Forest Service
R. L. S., State of Wisconsin
Certificate S-1651

Plat Ready For Filing:

Dale D. Steep
District Ranger

Marge Durand