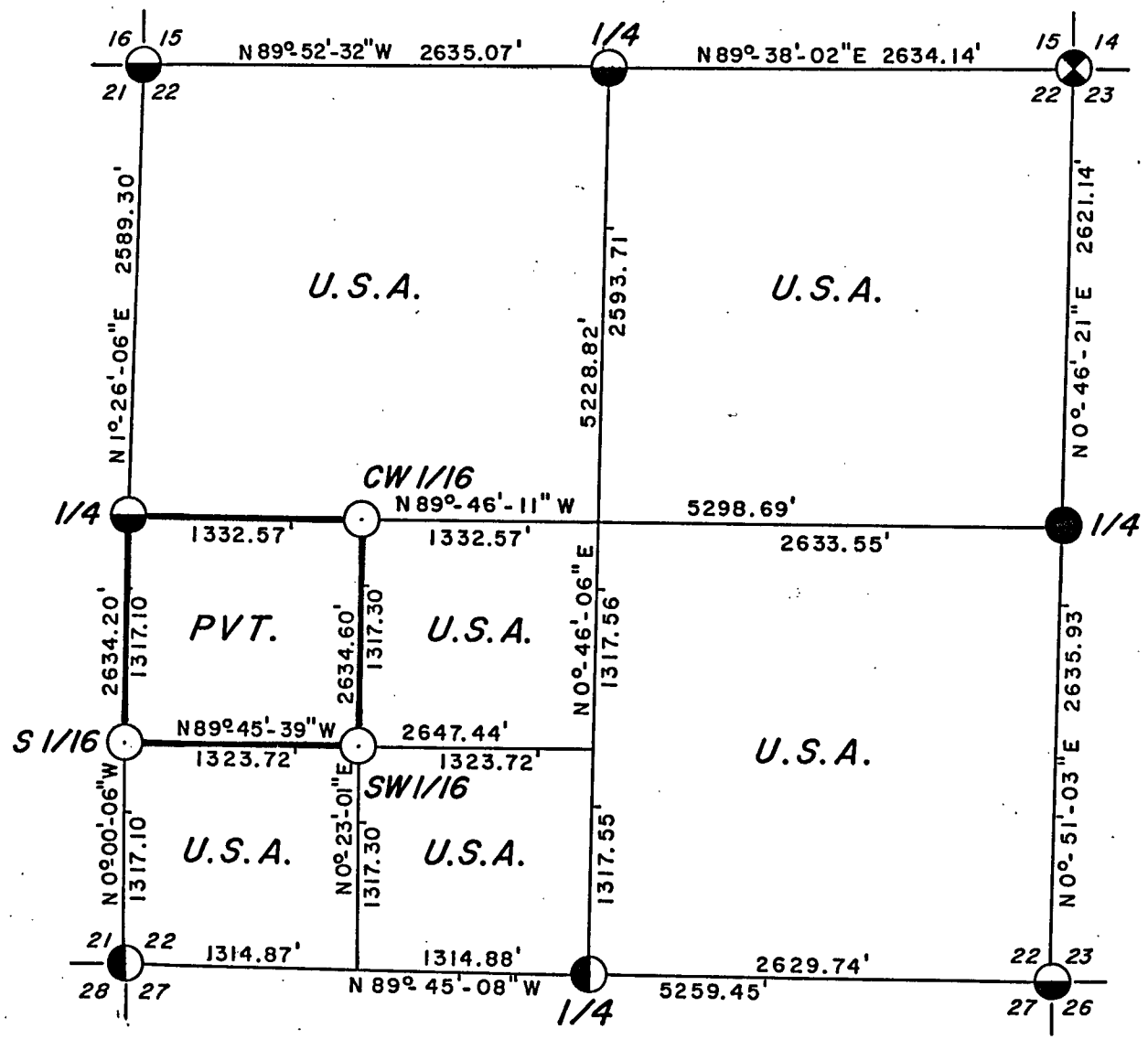
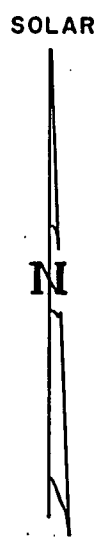
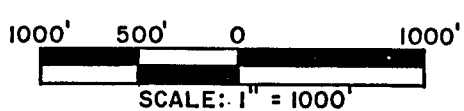


County Clerk

PLAT OF SURVEY U.S. GOVERNMENT LAND

BEING THE NW 1/4, THE NE 1/4, THE SE 1/4 AND THE S 1/2
& NE 1/4 OF THE SW 1/4, SECTION 22, TOWNSHIP 34 NORTH,
RANGE 16 EAST, FOURTH PRINCIPAL MERIDIAN, FOREST
COUNTY, WISCONSIN.



Conversion Factors:
Feet to Meters 0.304801
Meters to Feet 3.280833

LEGEND

- 2 1/2" x 60" U.S.F.S. Aluminum monument
- ⊗ Railroad Spike in centerline of C.T.H. "C"
- ◐ 2 1/2" x 36" U.S.F.S. Aluminum monument
- ◑ 2 1/2" x 30" U.S.F.S. Aluminum monument
- 2 1/2" x 36" Aluminum monument set this survey.
- Boundary U.S. Government Land, marked and posted to U.S.F.S. standard.

SURVEY NOTES

This survey was made by Soder Surveying, pursuant to United States Department of Agriculture, Forest Service Contract #53-56A6-6-00011, True Line Survey for the purpose of marking and perpetuating the exterior and interior boundary lines of the U.S. Government land on the perimeter and within Section 22, T34N, R16E, Forest County, Wisconsin as shown on the plat herewith.

The U.S. Government lands in this section were aquired in 1934 and 1967.

The original Government subdivision survey of this township was made by James McBride in 1858.
South and West lines by Artemus Curtis in 1857.

The corner positions recovered, restored, and established by this survey are marked by the monument described in the map legend.

The corner positions established were located to an accuracy of 1 part in 3000.

The bearings between corner positions are true bearings as determined by solar observations.

The field notes of this survey and a copy of this plat are on file in the Forest Supervisor's Office in Rhinelander, WI.

Corners Recovered

1. Section Corner to Sections 16,15,21 & 22, T34N, R16E
Document #127298 in Forest County Register of Deeds.
2. Section Corner to Sections 15,14,22 & 23, T34N, R16E
Document #127300 in Forest County Register of Deeds.
3. Section Corner to Sections 22,23,27 & 26, T34N, R16E
Document #127319 in Forest County Register of Deeds.
4. Section Corner to Sections 21,22,28 & 27 T34N, R16E
Document #127316 in Forest County Register of Deeds.
5. Quarter Corner to Sections 15 & 22, T34N, R16E
Document #127299 in Forest County Register of Deeds.
6. Quarter Corner to Sections 22 & 23, T34N, R16E
Document #127307 in Forest County Register of Deeds.
7. Quarter Corner to Sections 22 & 27, T34N, R16E
Document #127318 in Forest County Register of Deeds.

Corners Recovered Cont.

8. Quarter Corner to Sections 21 & 22, T34N, R16E
Document #127306 in Forest County Register of Deeds.

Corners Established

1. Center West One-Sixteenth Corner to Section 22, T34N, R16E
Corner established proportionately and on line between the Center one-quarter corner and West one-quarter corner of Section 22.

Corner references:

Maple	6"	N 8° E	15.71 feet
Maple	8"	N 62° W	31.86 feet
Steel Sign Post		South	0.65 feet

2. South West One-Sixteenth Corner to Section 22, T34N, R16E
Corner established at the intersection of the South and West one-sixteenth lines of Section 22.

Corner References:

Yellow Birch	14"	S 4° E	24.81 feet
Maple	8"	N 70° E	32.89 feet
Steel Sign Post		West	0.70 feet

3. South One-Sixteenth Corner to Sections 21 & 22 T34N, R16E
Corner established proportionately and on line between the South West corner and the West one-quarter corner of Section 22.

Corner References:

Maple	9"	S 39° E	35.98 feet
Maple	9"	N 33° E	7.89 feet
Steel Sign Post		East	0.92 feet

SURVEYOR'S AFFADAVIT

State of Wisconsin)
County of Forest)ss

I, Kip W. Soder, registered land surveyor in the State of Wisconsin, hereby certify that I have run the boundary lines shown hereon and set the established corners in Section 22, Township 34 North, Range 16 East, Fourth Principal Meridian, Forest County, State of Wisconsin.

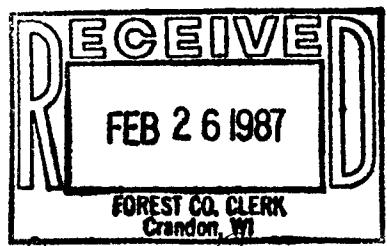
The plat map and the notes herewith are a correct representation of the land which was subdivided by the U.S. Forest Service Surveyor based on traverse work by a seperate previous contract. The controlling corners were set and certified to by the U.S. Forest Service Surveyor. I have surveyed said boundary and set said established corners in accordance with the rules for the survey of the public lands and with the Statutes of the State of Wisconsin.



Kip W. Soder
Kip W. Soder
R.L.S. State of Wisconsin
Certificate S-1731

Date of Survey: 1986

Plat ready for filing *Dale S. Haeg*
District Ranger



*Dora C. James
Forest Co. Clerk*