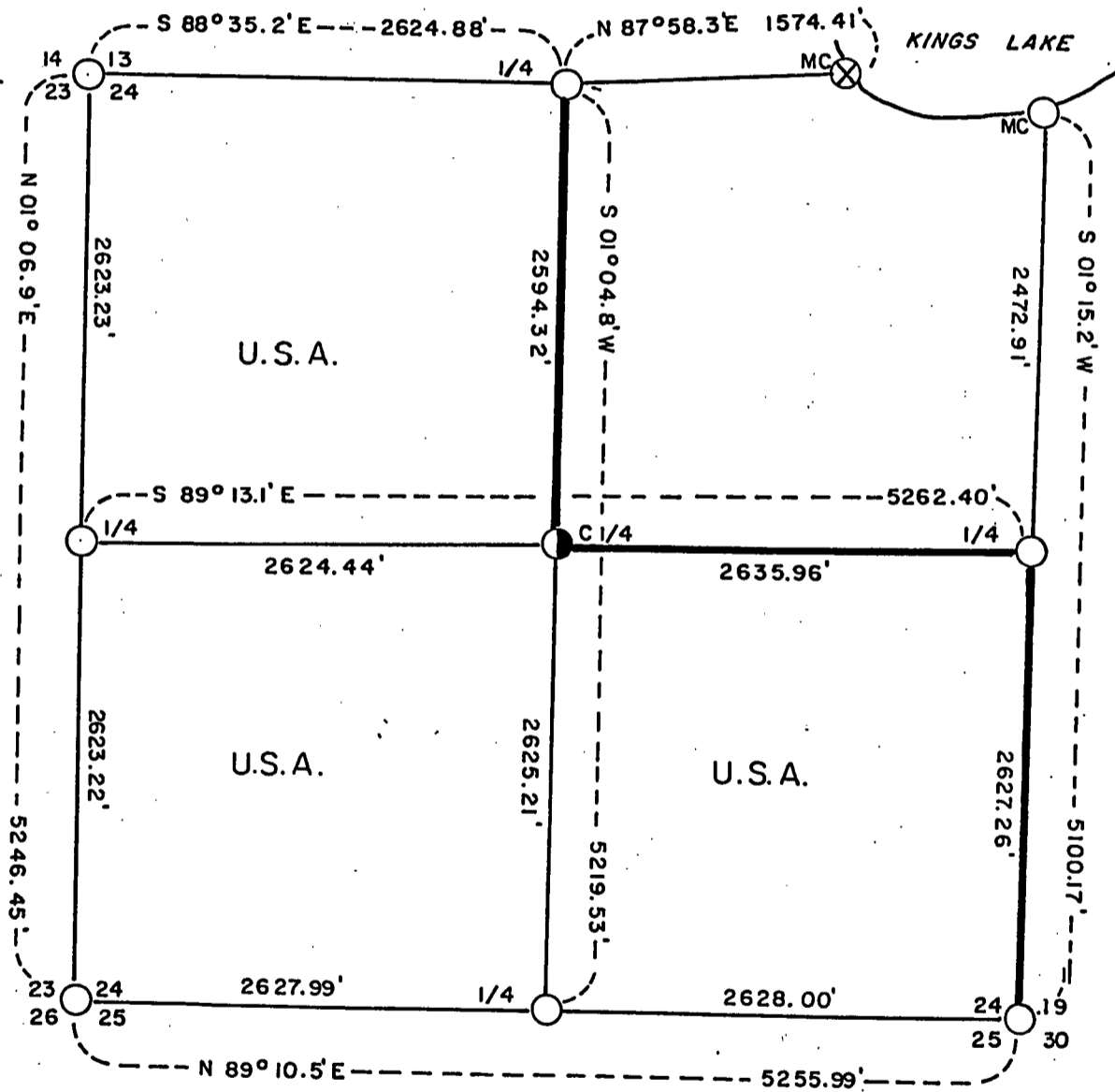


PLAT OF SURVEY Sheet one of three  
 U.S. GOVERNMENT LAND

BEING THE SW 1/4, THE SE 1/4, AND THE NW 1/4 OF  
 SECTION 24, TOWNSHIP 34 NORTH, RANGE 16 EAST,  
 4TH PRINCIPAL MERIDIAN, FOREST COUNTY,  
 WISCONSIN



1000 0 1000  
 SCALE IN FEET

LEGEND

- Existing 2" Diameter Forest Service Monument
- Set 2" Diameter Aluminum Monument, 60" Long
- ⊗ Existing Iron Pipe Monument

— Marked Boundary Line of U.S. Government Land

CONVERSION FACTOR:

Feet to Meters = 0.3048  
 Meters to Feet = 3.280833

Stock No. 26273

Sheet two of three

SURVEY NOTES

This survey was made by AARON ASSOCIATES of Oconto Falls, Wisconsin, under contract with the U.S. Department of Agriculture, Forest Service using Forest Service subdivisional data, for the purpose of establishing subdivisional corners within Section 24, and for marking and locating the boundaries of U.S. Government lands on their perimeter and within Section 24, Township 34 North, Range 16 East, 4th Principal Meridian, Forest County, Wisconsin.

The U.S. Government lands were acquired in 1934.

The Original Government Survey of this township was made in 1859.

The corner positions recovered, restored, and established by this survey are marked with monuments described in the map legend.

The corner positions established by this survey were located to an accuracy of one part in 3000.

The bearings between corner positions are referenced to True North by solar observation.

The field notes and a copy of the Plat map are on file in the Forest Supervisor's Office at Rhinelander, Wisconsin.

CORNERS RESTORED AND RECOVERED1. Section Corner to Sections 13-14-23-24, T34N, R16E.

Corner position found marked with 2" diameter Forest Service monument. Certificate on file in the Forest County courthouse.

2. Meander Corner to Sections 24, T34N, R16E & 19, T34N, R17E.

Corner position found marked with a 2" diameter Forest Service monument. Certificate on file in the Forest County courthouse.

3. Meander Corner to Sections 13-24, T34N, R16E.

Corner position found marked with a 1½" iron pipe and accepted by Forest Service as meander corner perpetuation.

4. Section Corner to Sections 24-25, T34N, R16E & 19-30, T34N, R17E.

Corner position found marked with a 2" diameter Forest Service monument. Certificate on file in the Forest County courthouse.

5. Section Corner to Sections 23-24-25-26, T34N, R16E.

Corner position found marked with a 2" diameter Forest Service monument. Certificate on file in the Forest County courthouse.

6. Quarter Corner to Sections 13-24, T34N, R16E.

Corner position found marked with a 2" diameter Forest Service monument. Certificate on file in the Forest County courthouse.

Stock No. 26273

Sheet three of three

7. Quarter Corner to Sections 24, T34N, R16E & 19, T34N, R17E.

Corner position found marked with a 2" diameter Forest Service monument.  
Certificate on file in the Forest County courthouse.

8. Quarter Corner to Sections 24-25, T34N, R16E.

Corner position found marked with a 2" diameter Forest Service monument.  
Certificate on file in the Forest County courthouse.

9. Quarter Corner to Sections 23-24, T34N, R16E.

Corner position found marked with a 2" diameter Forest Service monument.  
Certificate on file in the Forest County courthouse.

CORNERS ESTABLISHED10. Center Quarter Corner of Section 24, T34N, R16E.

This corner position was set at the straight line intersection point  
of quarter lines in Section 24 based on information furnished by the  
Forest Service.

Corner references:

Spruce	10"	N40W	14.55 ft.
White Birch	4"	N86E	44.04 ft.
Double Cedar	7"	N39E	53.15 ft.
Sign Post		East	0.74 ft.

SURVEYOR'S AFFIDAVIT

STATE OF WISCONSIN)  
COUNTY OF FOREST )SS

I, Kim H Pritzlaff, Registered Land Surveyor in the State of Wisconsin,  
hereby certify: That I Have surveyed and subdivided Section 24, Township  
34 North, Range 16 East, 4th Principal Meridian, Forest County, Wisconsin.

That the Plat map and notes herewith are a true and correct representation  
of the land surveyed and subdivided using Forest Service data and information  
on the section perimeter and that I have surveyed and subdivided said  
Section 24 in accordance with the rules of survey of the Public Lands  
and with the Statutes of the State of Wisconsin.

Date of Survey: 1986.

*Kim H. Pritzlaff*

Kim H Pritzlaff, RLS No. 1259  
AARON ASSOCIATES  
Oconto Falls, Wisconsin

Plat ready for filing *Dale S. Staeger*

District Ranger

